



2023-2024 GRADUATE OUTCOMES



GATEWAY TECHNICAL COLLEGE

GRADUATE OUTCOMES

Every year, Gateway Technical College surveys its graduates to better understand employment outcomes and graduate satisfaction levels. This year's Graduate Outcomes survey went to the 2,075 students who graduated during the 2023-24 academic year. 1,419 graduates completed the survey, with an overall response rate of 68% and only a 1% margin of error. The Office of Institutional Research administered the survey in multiple formats, including email, phone, and text messaging.

Survey results prove a high level of success among Gateway's graduates. 95% of graduates are satisfied with their training. Furthermore, 89% of those in the labor force are employed within 6-12 months of graduation. Graduates talk about knowledgeable instructors, vital support services, and the real-life skills they gain that can be immediately applied within the workforce. Gateway continues its work of making life-changing educational opportunities a reality for all students!

Definitions

- AAS - Associate of Applied Sciences degree programs
- Employed Related - Employed in a field related to the graduate's degree of study
- Full Time (FT) - Working at least 35+ hours per week
- TD - Technical Diploma programs

95%

of grads say they're
satisfied or very
satisfied with their
Gateway training



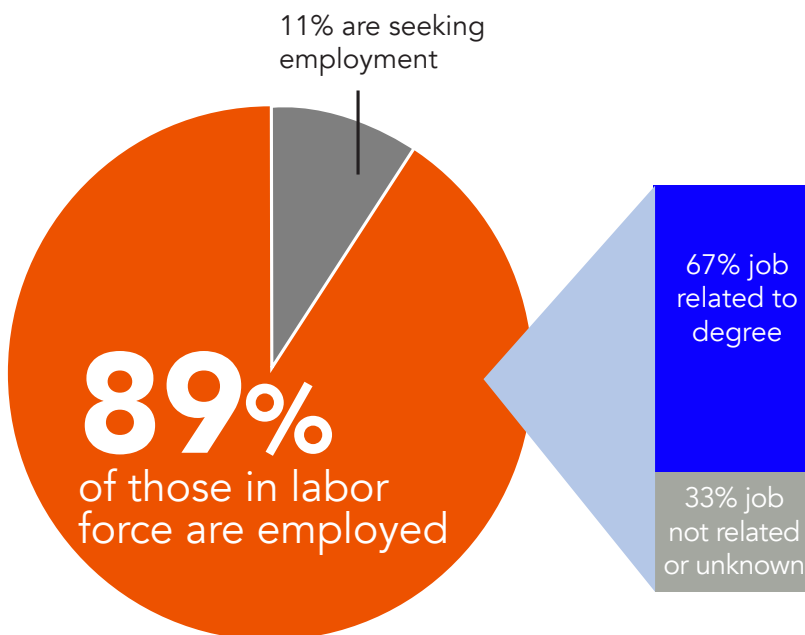
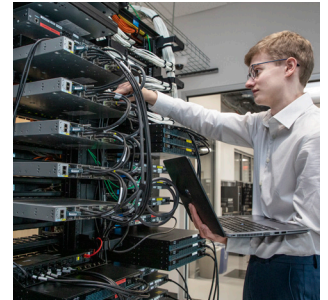
\$63,000
median annual
salary of graduates
working 35+ hrs/wk
in a job related to
their field of study



89%
of graduates in
the labor force
are employed

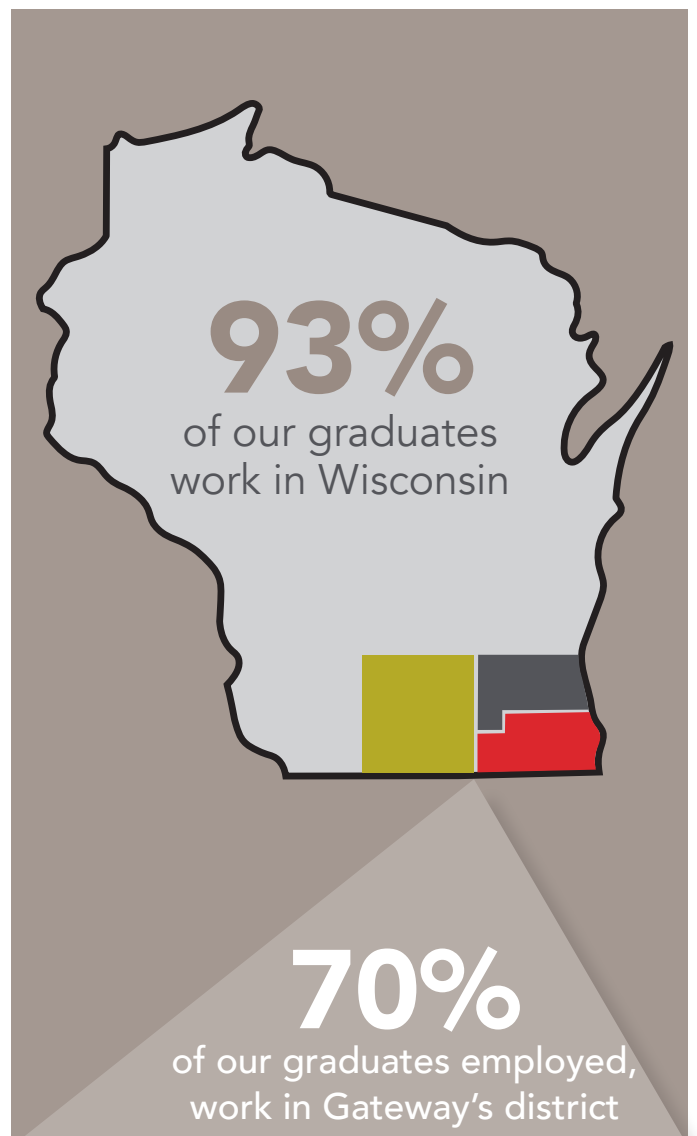
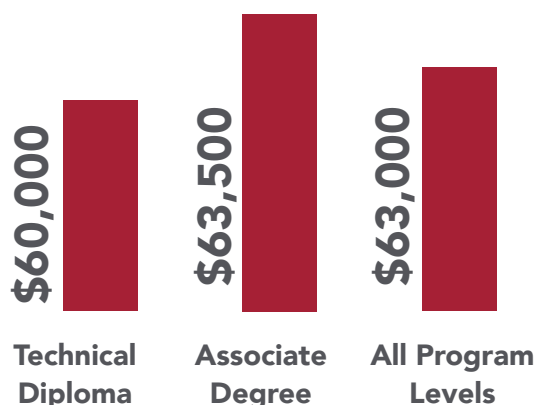
WHY GRADUATES CHOOSE GATEWAY:

Preparation for a job	33%
Preparation for further education	25%
Career change	19%
Personal interest	12%
Improvement of existing job skills	9%
Other	2%



Median Wages by Program Level

(Includes graduates working in a job related to their degree, and working at least 35 hours per week)



SCHOOL OF BUSINESS AND TRANSPORTATION

DEGREE/PROGRAM	NO. OF GRADUATES	NO. OF RESPONSES	IN LABOR FORCE	EMPLOYED	EMPLOYED RELATED	MEDIAN ANNUAL WAGE (FT IN RELATED FIELD)
Accounting (AAS)	19	13	10	80%	38%	\$ 48,250
Accounting Assistant (TD)	30	26	13	92%	42%	\$ 60,000
Administrative Professional (AAS) *	5					
Automotive Maintenance Technician (TD)	15	14	6	83%	60%	\$ 42,500
Automotive Technology (AAS)	18	13	13	100%	92%	\$ 45,800
Business Management (AAS)	77	39	20	80%	56%	\$ 49,024
Business Services Manager (TD)	27	25	10	90%	67%	\$ 76,220
Diesel Equipment Mechanic (TD) *	1					
Diesel Equipment Technology (AAS)	8	4	4	100%	50%	
Graphic Design (formerly Graphic Communications) (AAS)	21	11	7	57%	0%	
Human Resources (AAS) *	4					
Leadership Development (AAS)	4					
Marketing (AAS)	17	6	3	100%	33%	
Motorcycle, Marine & Outdoor Power Products (TD) ***	7	5	2	100%	0%	
Office Assistant (TD) *	6	5	0			
Professional Communications (AAS) ***	6	4	4	100%	75%	\$ 57,000
Small Business Entrepreneurship (AAS) *	7	3	2	100%	50%	
Supply Chain Management (AAS)	9	4	3	100%	67%	\$ 98,000
Truck Driving (TD)	11	6	6	100%	83%	\$ 40,000
Total	292	188	109	89%	57%	\$ 50,000

94% OF SCHOOL OF BUSINESS AND TRANSPORTATION GRADUATES ARE SATISFIED OR VERY SATISFIED WITH THEIR EDUCATION AT GATEWAY.

"It was great. The instructors were extremely helpful and the curriculum itself, they went pretty in depth with. It was a great experience."

- Automotive Technology graduate



SCHOOL OF BUSINESS AND TRANSPORTATION

Sample Graduate Job Titles

Accounting (AAS)** Accounting Clerk Auditor Bookkeeper Payroll Benefits Staff Accountant	Business Services Manager (TD) Assistant Manager Front Desk Agent Office Manager Product Coordinator	Supply Chain Management (AAS)** Import Export Coordinator Materials Clerk Purchasing Specialist Supply Chain Planning Manager
Accounting Assistant (TD) Accounting Supervisor Accounts Receivable Business Administrator Unit Business Officer	Diesel Equipment Technology (AAS)** Diesel Mechanic Diesel Technician Technician Warehouse Associate	Truck Driving (TD) Owner Operator Truck Driver
Automotive Maintenance Technician (TD)** Automotive Technician Lube Technician Store Manager Technician	Graphic Communications (formerly Graphic Communications) (AAS) ** Digital Media Specialist Lead Designer Marketing and Photography Assistant Photographer	
Automotive Technology (AAS) Assistant Service Manager Automotive Technician Diesel Technician Flat Rate Technician Mechanic	Leadership Development (AAS)** Commercial Product Manager Inventory Manager Supervisor Warehouse Lead	
Business Management (AAS) Assistant Manager Human Resources Administrator Member Financial Representative Parts Cataloger Property Manager	Marketing (AAS)** Marketing Administrator Marketing Manager Marketing, Membership, and Communications Manager	

Sample Companies Hiring Graduates

Business/Accounting/Marketing Graduates

Allied Plastics
CNH
Department of Revenue
Educators Credit Union
Scott Olson CPA LLC

Transportation Graduates

Blain's Farm & Fleet
Palmen Buick GMC
Penske
Ziegler Honda Racine

* = Insufficient Job Title Data

** = Due to limited responses, includes last five years' worth of data

*** = Program no longer accepting new students



"Gateway has changed the way I look at learning and education. I am grateful for my time as a student!"

- Accounting graduate

SCHOOL OF MANUFACTURING, ENGINEERING, AND INFORMATION TECHNOLOGY

DEGREE/PROGRAM	NO. OF GRADUATES	NO. OF RESPONSES	IN LABOR FORCE	EMPLOYED	EMPLOYED RELATED	MEDIAN ANNUAL WAGE (FT IN RELATED FIELD)
Advanced Manufacturing Technology (AAS)	3					
Architectural - Structural Engineering Technician (AAS)	2					
Building Trades - Carpentry (TD)	8	4	4	100%	100%	\$ 35,000
Civil Engineering Technology - Highway Technology (AAS)	8	5	4	75%	100%	\$ 80,000
CNC Production Technician (TD)	2					
CNC Programmer (TD)	12	6	5	100%	100%	\$ 58,500
Construction Management Technician (TD) *	9	8	4	75%	33%	
Electrical Engineering Technology (AAS)	8	7	4	100%	75%	
Electromechanical Maintenance Technician (TD)	5					
Electronics (AAS) ***	2					
Electronics Technician Fundamentals (TD) ***	1					
Facilities Maintenance (TD)	7	3	2	100%	50%	
IT - Computer Support Specialist (AAS)	12	7	5	100%	60%	\$ 48,000
IT - Computer Support Technician (TD)	10	9	4	50%	50%	
IT - Cybersecurity Specialist (AAS)	19	15	9	100%	44%	\$ 57,250
IT - Network Specialist (AAS)	13	10	10	100%	60%	\$ 83,000
IT - Software Developer (AAS)	29	18	12	67%	75%	\$ 61,000
IT - Web Programmer (TD) *	6	5	3	100%	0%	
IT - Web Software Developer (AAS) *	3					
Mechanical Design Technology (AAS) ***	5					
Refrigeration, Air Cond & Heating Service Tech (TD)	31	23	22	95%	52%	\$ 63,000
Welding (TD)	33	18	12	92%	73%	\$ 60,000
Welding/Maintenance & Fabrication (TD)	103	74	36	75%	59%	\$ 58,328
Total	331	230	147	86%	62%	\$63,000

97% OF SCHOOL OF MANUFACTURING, ENGINEERING AND IT GRADUATES ARE SATISFIED OR VERY SATISFIED WITH THEIR EDUCATION AT GATEWAY.

SCHOOL OF MANUFACTURING, ENGINEERING, AND INFORMATION TECHNOLOGY

Sample Graduate Job Titles

Advanced Manufacturing Technology (AAS)** Controls System Lead Engineering Technician Integrated Systems Advancement Manufacturing Technician	Electromechanical Maintenance Technician (TD)** Electrical Repair Electromechanical Maintenance Technician Maintenance Lead Maintenance Technician	Refrigeration, Air Cond & Heating Service Tech (TD) Facility Maintenance Refrigeration HVAC Technician HVAC Installation Technician Service Technician
Architectural - Structural Engineering Technician (AAS)** Architectural Intern Assistant Project Manager CNC Machinist Freelance Architectural Drafter	Facilities Maintenance (TD)** Maintenance Worker Maintenance Technician	Welding (TD) Manufacturer Steamfitter Welder
Building Trades - Carpentry Apprentice Carpenter Carpenter Carpenter/Site Supervisor	IT - Computer Support Specialist (AAS) IT Equipment Coordinator IT Support Desk Analyst Service Advisor Tech Support Admin	Welding/Maintenance and Fabrication (TD) Mig Welder Pipe Fitter Steam Fitter Welder Welder/Fabricator
Civil Engineering Technology - Highway Technology (AAS)** Design Manager Engineering Technician Estimator Land Survey Technician	IT - Computer Support Technician (TD) ** Computer Support Technician IT Helpdesk Technician Operations Service Advisor	
CNC Production Technician (TD)** CNC Machinist CNC Operator	IT - Cybersecurity Specialist (AAS) Associate Service Support Specialist Data Analyst Information Security Administrator IT Security Specialist Network/Cyber Security Administrator	
CNC Programmer (TD) CNC Instructor CNC Operator Machine Operator	IT - Network Specialist (AAS) Data Reporting Specialist Desktop and Network Support Coordinator IT Support Systems Administrator Technology Director	
Electrical Engineering Technology (AAS)** Designer Electrical Engineer Tech Level 1 Engineering Technician Fire Alarm Technician Production Repairs Technician	IT - Software Developer (AAS) Associate Software Engineer Business Analyst IT Software Developer RPG Programmer Intern	

"The class size and professors' availability when needed are what made Gateway the right choice for me. I wasn't just a number to them and that helped me to succeed."

- IT-Network Specialist graduate

Sample Companies Hiring Graduates

Manufacturing/STEM Graduates

Astronautics
JLL
Kenosha Unified School District
Kenosha Water Utility
Roger's Heating and Cooling

Information Technology Graduates

Amazon
Carthage College
Emerson Electric
Gateway Technical College
Northwestern Mutual

Architecture & Construction Graduates

AMSCI
Evolve Concepts
Habitat for Humanity Racine
Interra Inc.

Welding Graduates

Amazon
Caterpillar
Centrisys
John Mullins
Lee Mechanical

* = Insufficient Job Title Data

** = Due to limited responses, includes last five years' worth of data

*** = Program no longer accepting new students

SCHOOL OF PROTECTIVE AND HUMAN SERVICES

DEGREE/PROGRAM	NO. OF GRADUATES	NO. OF RESPONSES	IN LABOR FORCE	EMPLOYED	EMPLOYED RELATED	MEDIAN ANNUAL WAGE (FT IN RELATED FIELD)
Advanced EMT (TD)	17	8	6	83%	100%	\$ 53,000
Arboriculture/Urban Forestry Technician (AAS) ***	4					
Barber Technologist (TD)	16	9	8	88%	29%	
Cosmetology (TD)	35	18	14	86%	33%	
Criminal Justice Studies (AAS)	35	23	15	87%	38%	\$ 85,000
Criminal Justice-Law Enforcement 720 Academy (TD)	68	36	31	97%	87%	\$ 70,000
Culinary Arts (AAS)	5					
Culinary Assistant (TD) *	1					
Early Childhood Education (AAS)	21	11	7	86%	67%	
Emergency Medical Technician - Paramedic (TD)	17	10	8	100%	100%	\$ 101,500
Emergency Medical Technician (TD)	123	97	57	91%	77%	\$ 55,500
Fire Medic (AAS) ***	4					
Foundations of Lodging and Hospitality Management (TD) ***	3					
Foundations of Teacher Education (AAS)	9	7	6	100%	17%	
Greenhouse Operations (AAS)	4					
Horticulture Technician (TD) *	9	8	1	100%	0%	
Hospitality Management (AAS) *	3					
Human Services Associate (AAS)	39	25	14	86%	67%	\$ 44,960
Interior Design (AAS)	12	5	3	67%	100%	\$ 50,000
Landscape Horticulture (AAS) *	4					
Paramedic Technician (AAS)	4					
Veterinary Technician (AAS)	9	9	4	100%	100%	\$ 20,000
Total	442	287	189	91%	69%	\$65,000

93% OF SCHOOL OF PROTECTIVE AND HUMAN SERVICE GRADUATES ARE SATISFIED OR VERY SATISFIED WITH THEIR EDUCATION AT GATEWAY.

"The instructors were great. They knew all their stuff really well and cared about their students."

- EMT graduate



SCHOOL OF PROTECTIVE AND HUMAN SERVICES

Sample Graduate Job Titles

Advanced EMT (TD)** Advanced EMT Advanced EMT/Firefighter Emergency Medical Technician Paramedic	Emergency Medical Technician (TD) Firefighter / Paramedic EMT (TD) Emergency Medical Technician Firefighter/EMT Firefighter Driver Operator EMT	Veterinary Technician (AAS)** Certified Veterinary Technician Veterinary Assistant
Barber Technologist (TD) Barber Hair Stylist	Foundations of Teacher Education (AAS)** Educational Assistant Front Office Manager Paraprofessional Special Education Aide	
Cosmetology (TD)** Cosmetologist Hair Assistant Hair Stylist	Greenhouse Operations (AAS)** Director of Therapeutic Horticulture Horticulturist Interior Scape Technician Interior Technician	
Criminal Justice Studies (AAS)** Correctional Officer Deputy Medical Examiner Police Officer Probation Agent Security Officer	Human Services Associate (AAS) Case Manager / Caseworker Manager of Daily Operations Operations Support Specialists Patient Service Representative	
Criminal Justice - Law Enforcement 720 Academy (TD) Deputy Patrol Officer Police Officer	Interior Design (AAS)** Assistant Designer Assistant Stager Carpenter Interior Designer Junior Interior Designer	
Culinary Arts (AAS)** Line Cook Sous Chef	Paramedic Technician (AAS)** Advanced Scope Paramedic Firefighter Paramedic Paramedic	
Early Childhood Education (AAS)** Daycare Teacher Lead Teacher Preschool Teacher Special Education and Daycare Administrator		

Sample Companies Hiring Graduates

Barber/Cosmetology Graduates**

Charlie Johns Hair Parlor
Little Lion Cuts
Self-employed

Human Services Graduates

Aurora Health Care
Children's Hospital - Child and Family
Counseling Center
Hospitality Center of Racine
Kenosha Human Development Services

Law and Public Safety Graduates

City of Kenosha / City of Racine
Police Department
Kenosha County / Racine County
Sheriff's Department

Agriculture/Vet Tech Graduates

Animal Clinic of Elkhorn
Care Animal Hospital of Pleasant Prairie
David J Frank Landscape Company
Fox Valley Veterinary Service

* = Insufficient Job Title Data

** = Due to limited responses, includes last five years' worth of data

*** = Program no longer accepting new students

SCHOOL OF HEALTH

DEGREE/PROGRAM	NO. OF GRADUATES	NO. OF RESPONSES	IN LABOR FORCE	EMPLOYED	EMPLOYED RELATED	MEDIAN ANNUAL WAGE (FT IN RELATED FIELD)
Dental Assistant (TD)	12	11	9	100%	78%	\$ 42,500
Health Information Technology (AAS) ***	10	4	4	50%	50%	
Medical Assistant (TD)	20	13	7	100%	86%	\$ 38,240
Nursing - Associate Degree (AAS)	169	108	96	96%	90%	\$ 70,000
Nursing Assistant (TD)	629	427	83	82%	47%	\$ 36,000
Physical Therapist Assistant (AAS)	11	8	6	83%	80%	\$ 56,880
Practical Nursing (TD)	133	125	28	86%	75%	
Surgical Technology (AAS)	9	6	6	83%	80%	\$49,920
Total	993	702	239	89%	73%	\$ 67,000

95% OF SCHOOL OF HEALTH GRADUATES ARE SATISFIED OR VERY SATISFIED WITH THEIR EDUCATION AT GATEWAY.

Sample Graduate Job Titles

Dental Assistant (TD)
Dental Assistant

Medical Assistant (TD)
Certified Medical Assistant
Medical Assistant

Nursing (AAS)
ICU Nurse
Licensed Practical Nurse
Occupational Safety Nurse
Registered Nurse

Nursing Assistant (TD)
Caregiver
Certified Nursing Assistant
Emergency Department Technician
Phlebotomist

Physical Therapist Assistant (AAS)
Physical Therapist Assistant

Practical Nursing (TD)
Certified Nursing Assistant
Certified Medical Assistant
Licensed Practical Nurse
Registered Nurse

Surgical Technology (AAS)
Certified Surgical Technologist/Technician
Surgical Technologist/Technician

* = Insufficient Job Title Data
** = Due to limited responses, includes last five years' worth of data
*** = Program no longer accepting new students

Sample Companies Hiring Graduates

Advocate Aurora
Ascension All Saints
Cora Physical Therapy
Froedtert
Heritage Senior Living

"The Surgical Technician Program is outstanding! The teachers go above and above with the curriculum! For being a new graduate, my employer is very impressed by my level of proficiency. "

- Surgical Technology graduate



SCHOOL OF LIBERAL ARTS AND SCIENCES

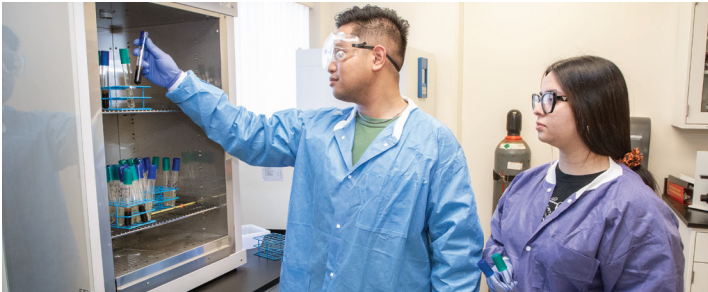
DEGREE/PROGRAM	NO. OF GRADUATES	NO. OF RESPONSES	IN LABOR FORCE	EMPLOYED	EMPLOYED RELATED	MEDIAN ANNUAL WAGE (FT IN RELATED FIELD)
Liberal Arts - Associate of Arts (AA)/ Associate of Sciences (AS) *	17	12	6	100%	33%	\$ 25,000

90% OF SCHOOL OF LIBERAL ARTS AND SCIENCES GRADUATES ARE SATISFIED OR VERY SATISFIED WITH THEIR EDUCATION AT GATEWAY.

- * = Insufficient Job Title Data
- ** = Due to limited responses, includes last five years' worth of data
- *** = Program no longer accepting new students

“Overall it was a good stepping stone. I used it to get my general eds done, and the cost effectiveness of it was perfect.”

- Liberal Arts - Associate of Arts graduate





This report was prepared by the Office of Institutional Research.
For any questions about the report or methodology, please contact: research@gtc.edu.