

GATEWAY TECHNICAL COLLEGE ORGANIZATIONAL CHART

July 2025

TABLE OF CONTENTS

Board of Trustees & Executive Leadership Council

President's Office

Business Office

Facilities and Security

Talent & Culture

Student Affairs - Student Support Services

Marketing and Communications

Institutional Effectiveness

Library

Learning Innovation

Business and Workforce Solutions

Student Affairs - Student Support Services

Student Affairs - Elkhorn, Kenosha, Racine

Campus Affairs

Academic Operations

Academic Affairs

School of Pre-College and Momentum Programs

School of Liberal Arts and Sciences

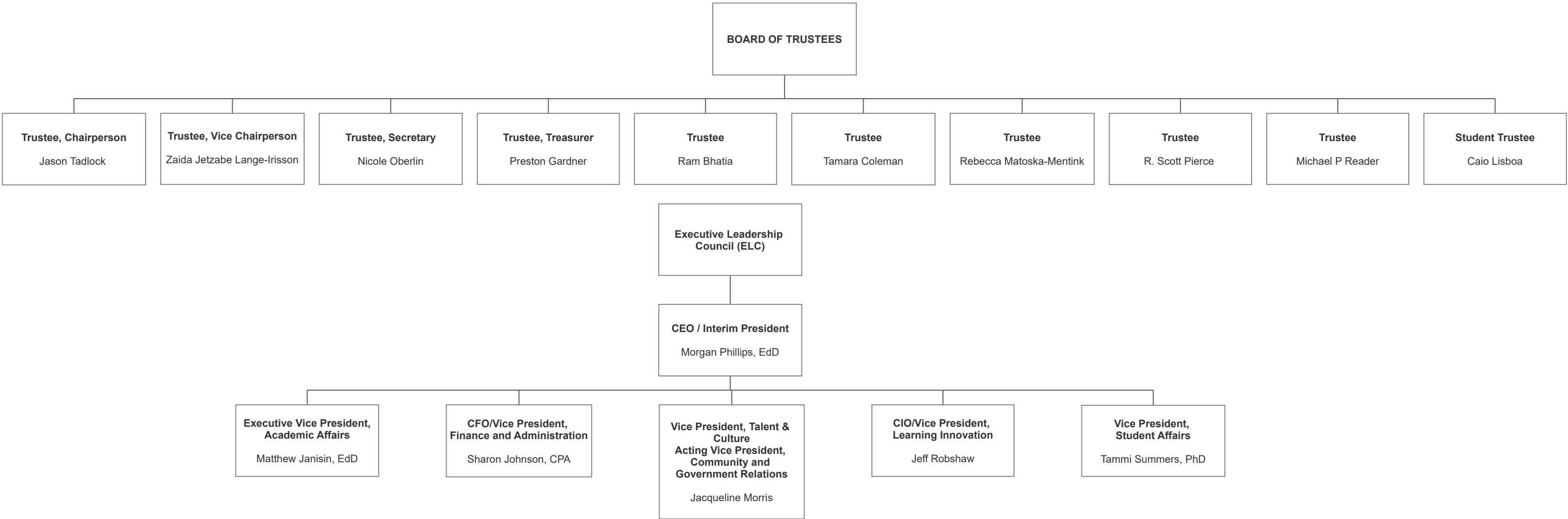
School of Business and Transportation

School of Health

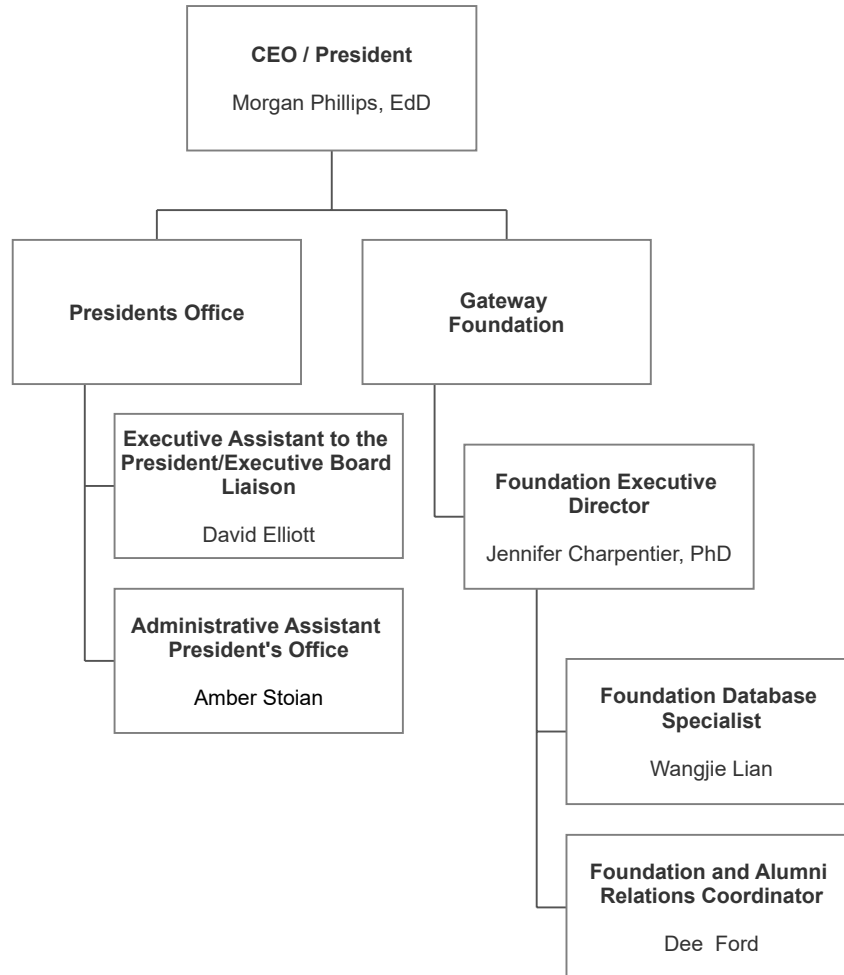
School of Manufacturing, Engineering and Informational Technology

School of Protective and Human Services

**BOARD OF TRUSTEES
AND
EXECUTIVE LEADERSHIP COMMITTEE**



PRESIDENT'S OFFICE



BUSINESS OFFICE

**CFO / Vice President
Finance and
Administration**

Sharon Johnson, CPA

**Administrative Assistant to
CFO/VP Finance & Admin**

Theresa Phrakousonh

FINANCE

Controller

Vacant

Assistant Controller

Michael Gabron

**Accounts Payable
Associate**

Michele Gianakos
Linda Pham

Accounting Associate

Sue Chase

BUDGET & PURCHASING

**Director, Budget &
Purchasing**

Jason Nygard

**Budget & Procurement
Analyst**

Rhonda Cerminara

Purchasing Agent

Ericka Bernhardt

ACCOUNTING / GRANTS

Accounting Manager

Jane Nikolai

Grant Accounting Analyst

Cheri Gutteridge
Courtney Prater

STUDENT ACCOUNTS

**Director, Student Accounts
and Accounts Receivables**

Breezann Warnock

**Accounts Receivable
Associate**

Faye Hanson
Alan Holverson

**Military & Veteran
Education Benefits
Manager**

Julie Terasek

**Student Accounts
Associate**

Nina Macao

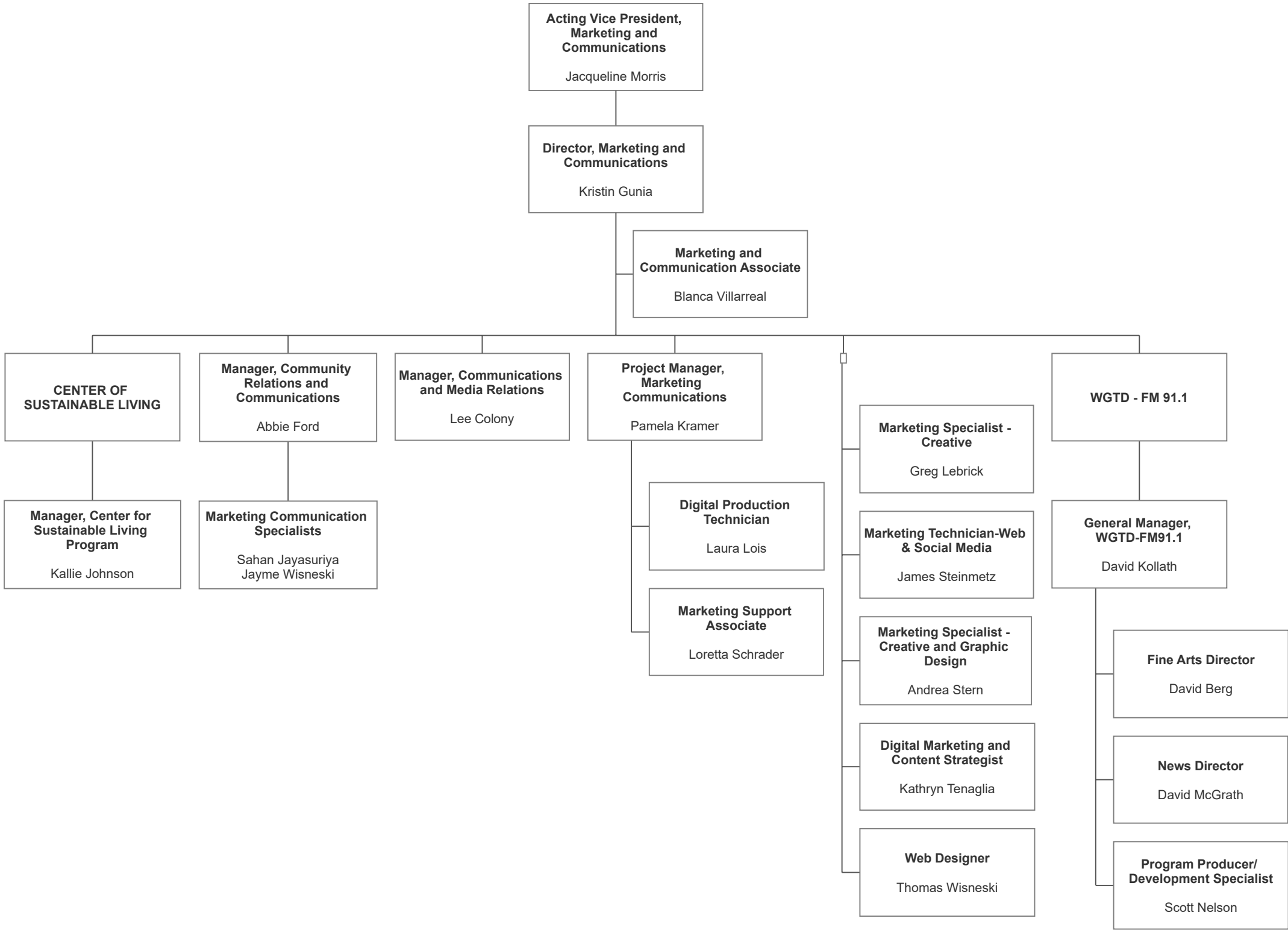
School Certifying Officials

Tanya Doherty
Angela Kaye

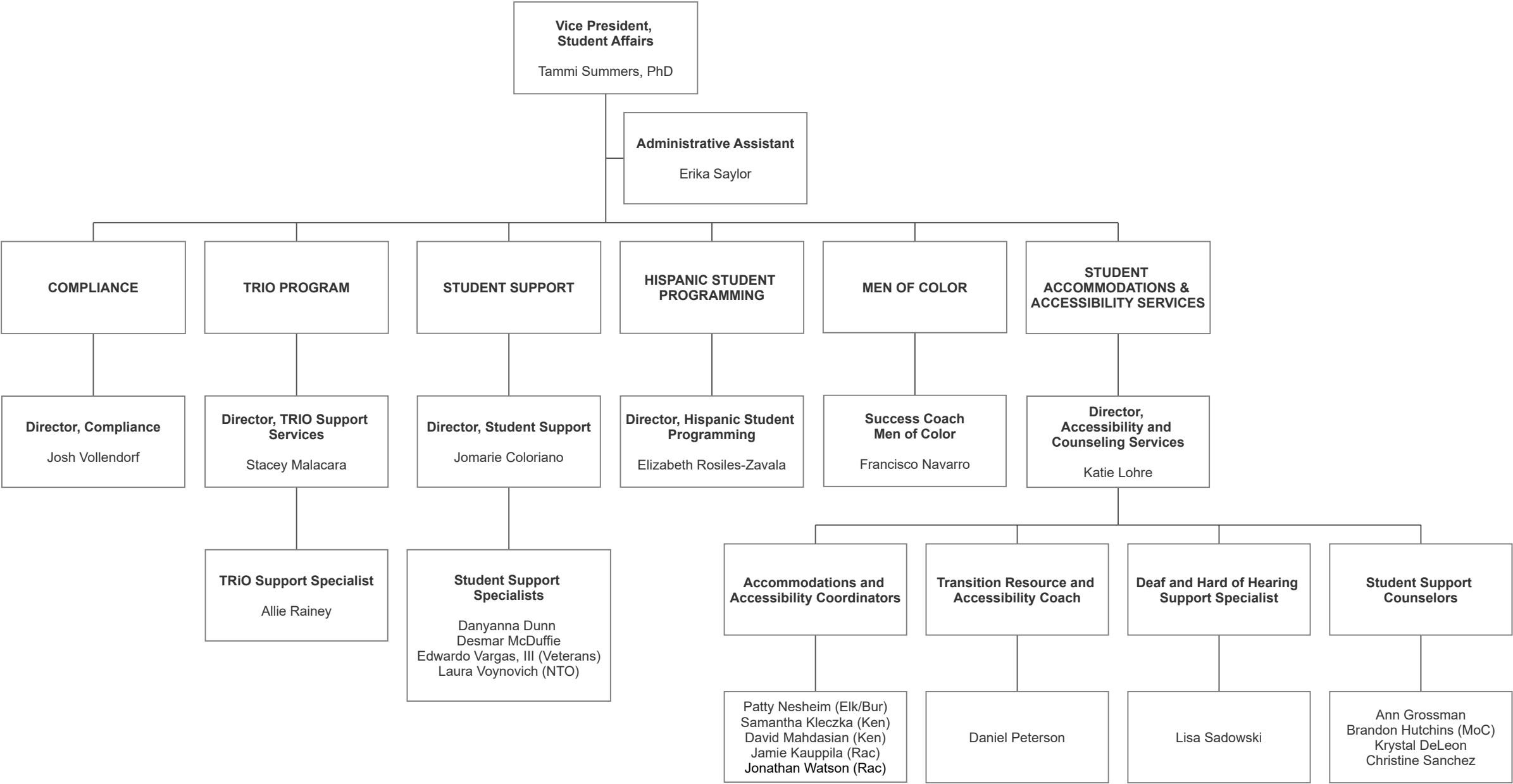
**Student Accounts
Specialist**

Michelle Ferba Davis
Jazmine Retana

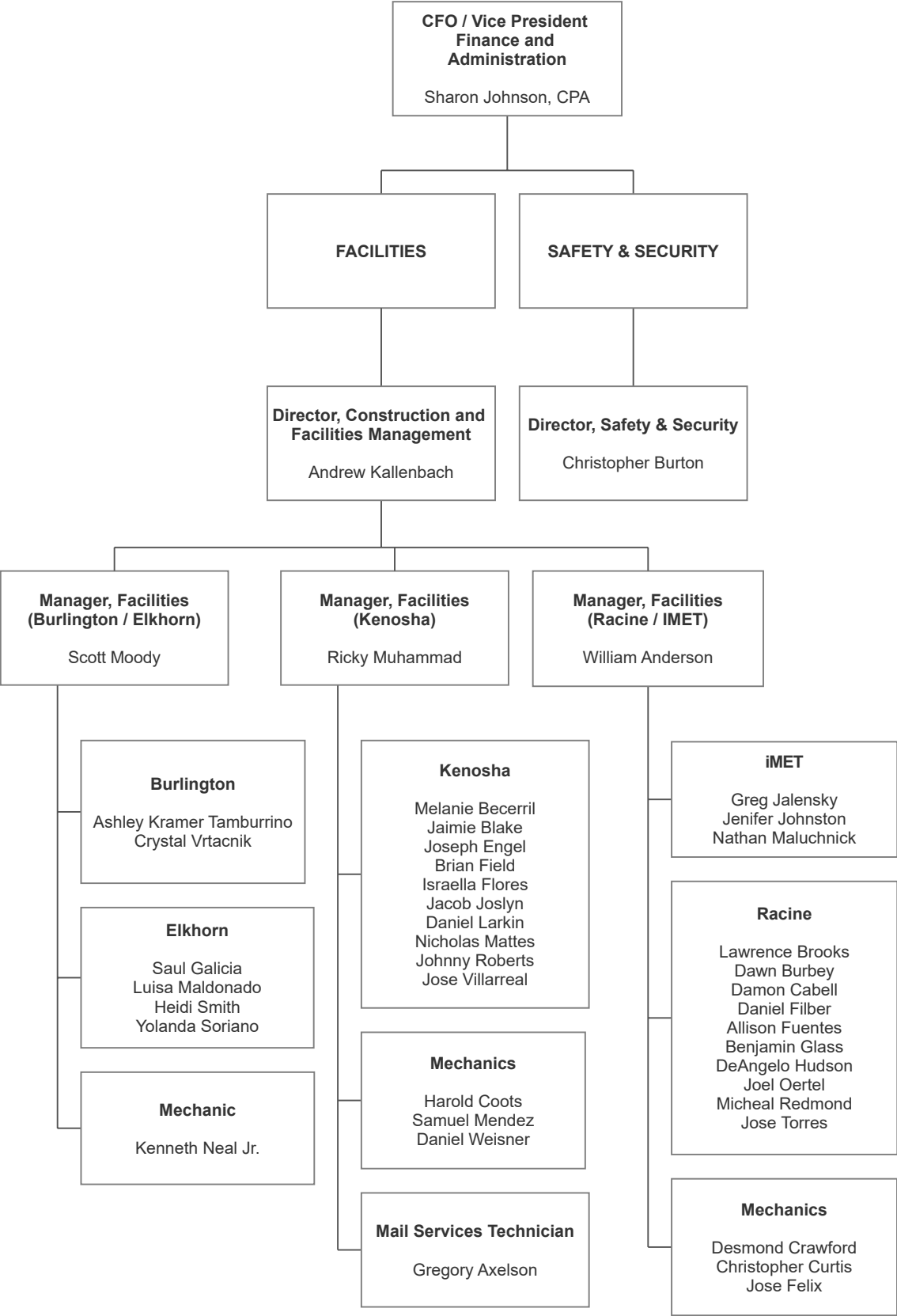
MARKETING AND COMMUNICATIONS



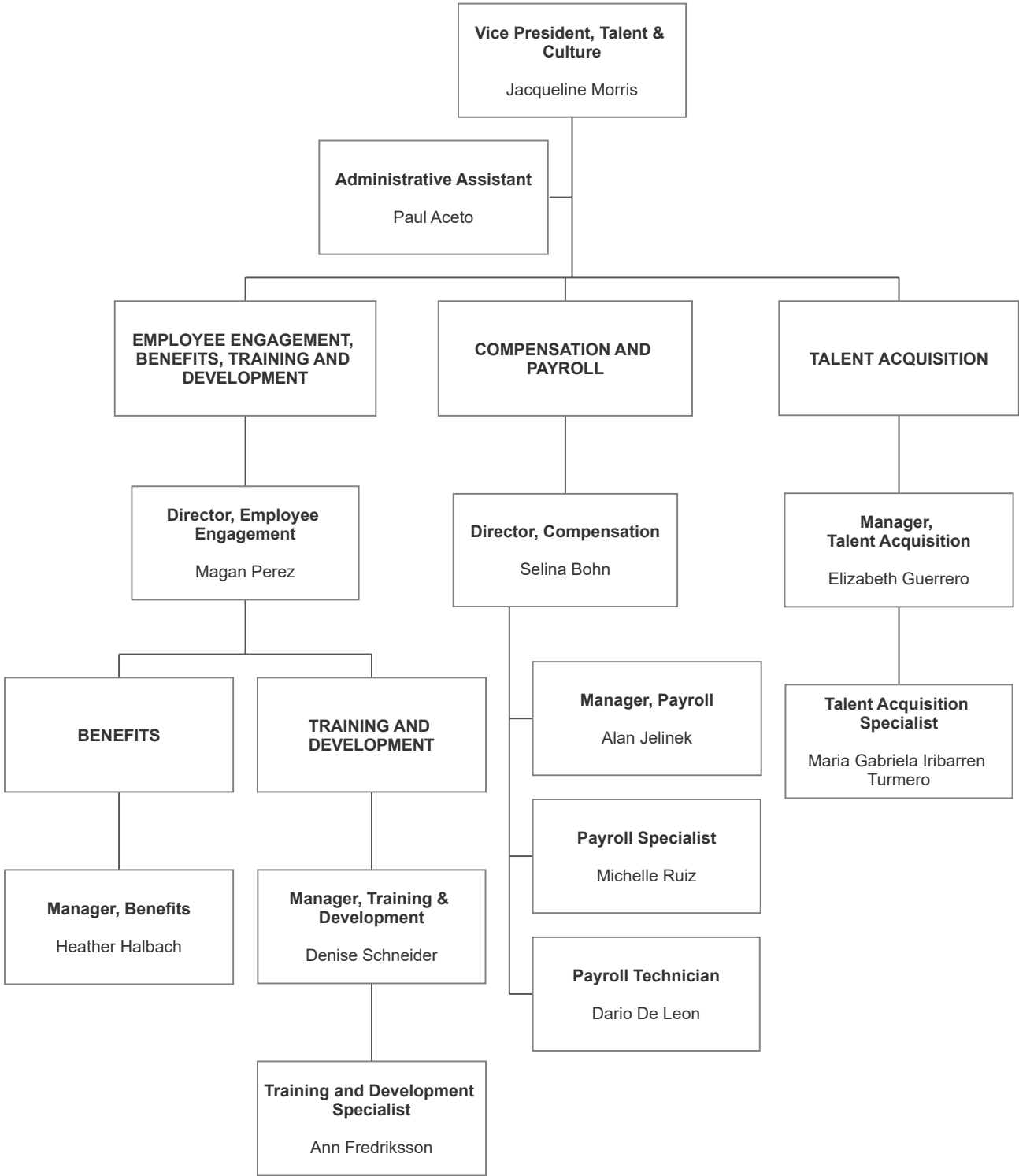
STUDENT AFFAIRS - STUDENT SUPPORT SERVICES



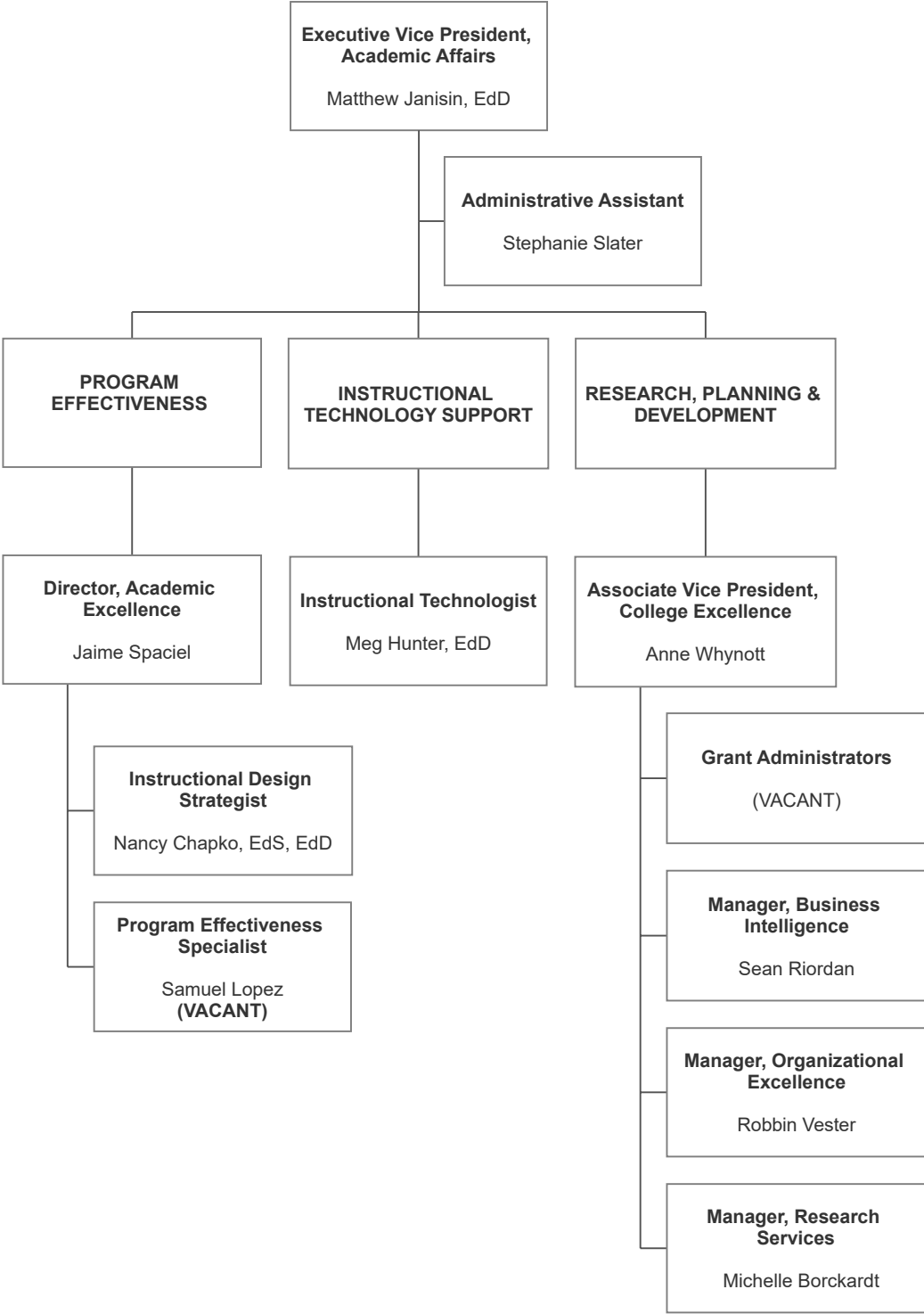
FACILITIES AND SECURITY



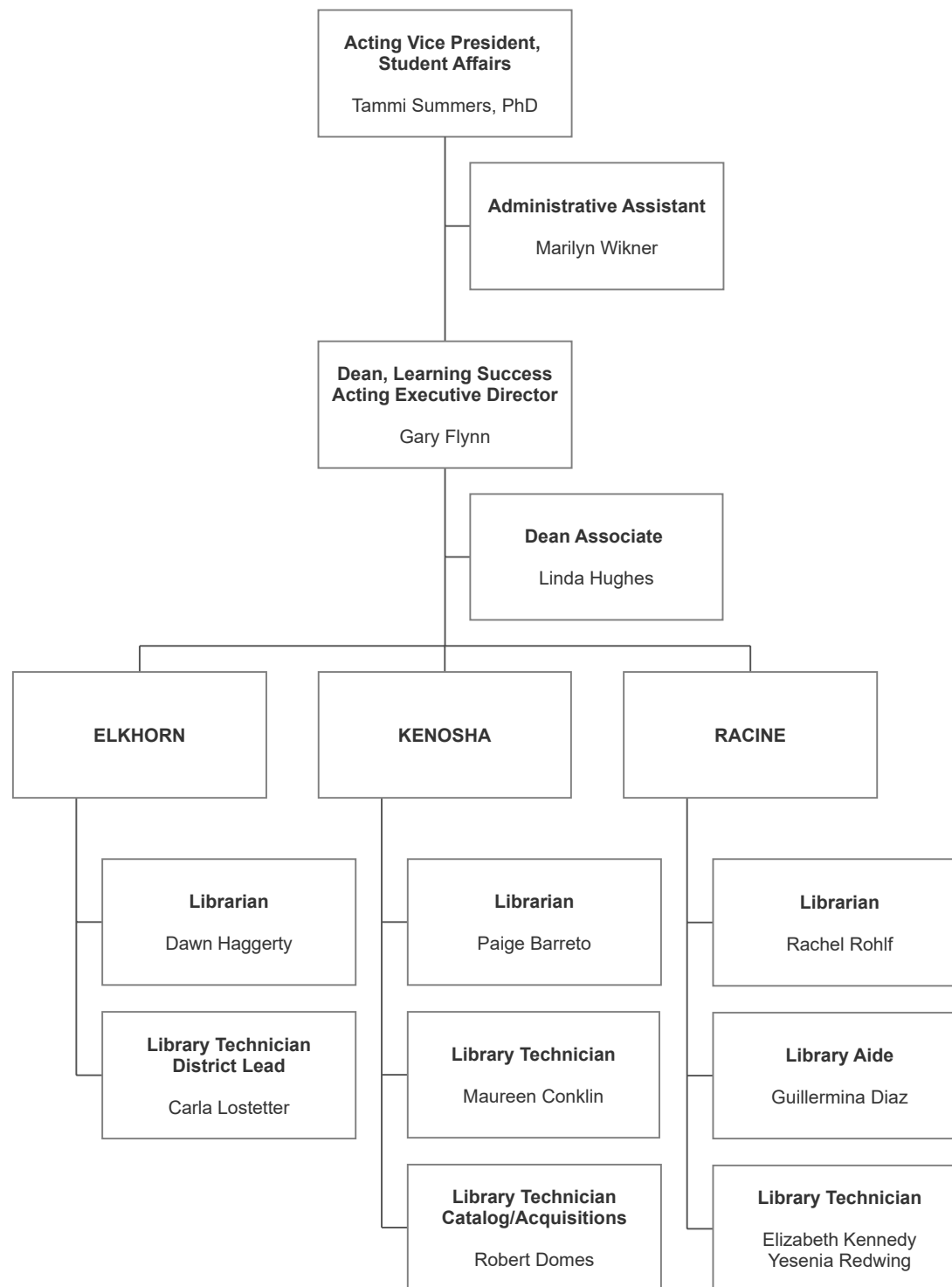
TALENT & CULTURE



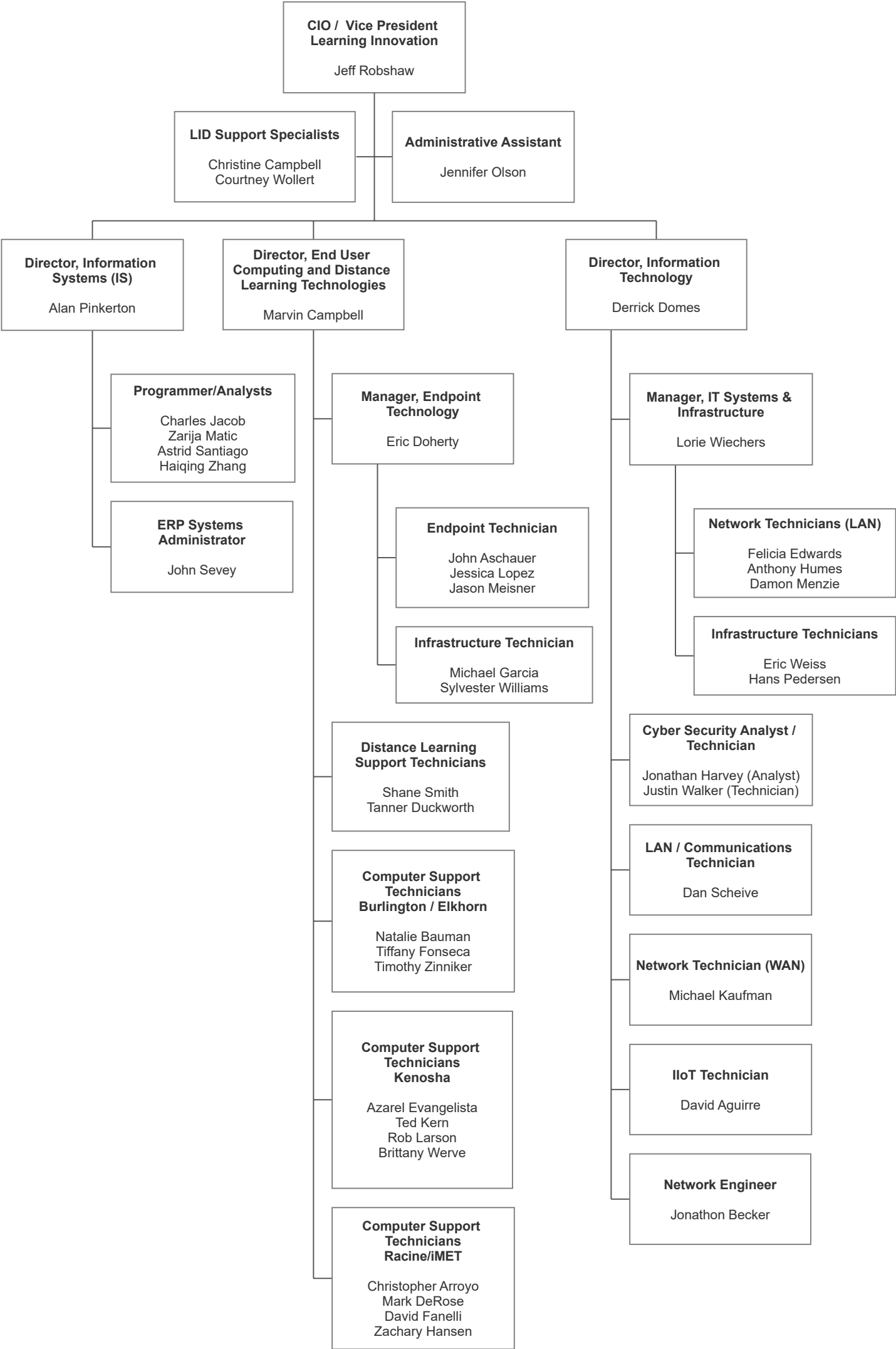
INSTITUTIONAL EFFECTIVENESS



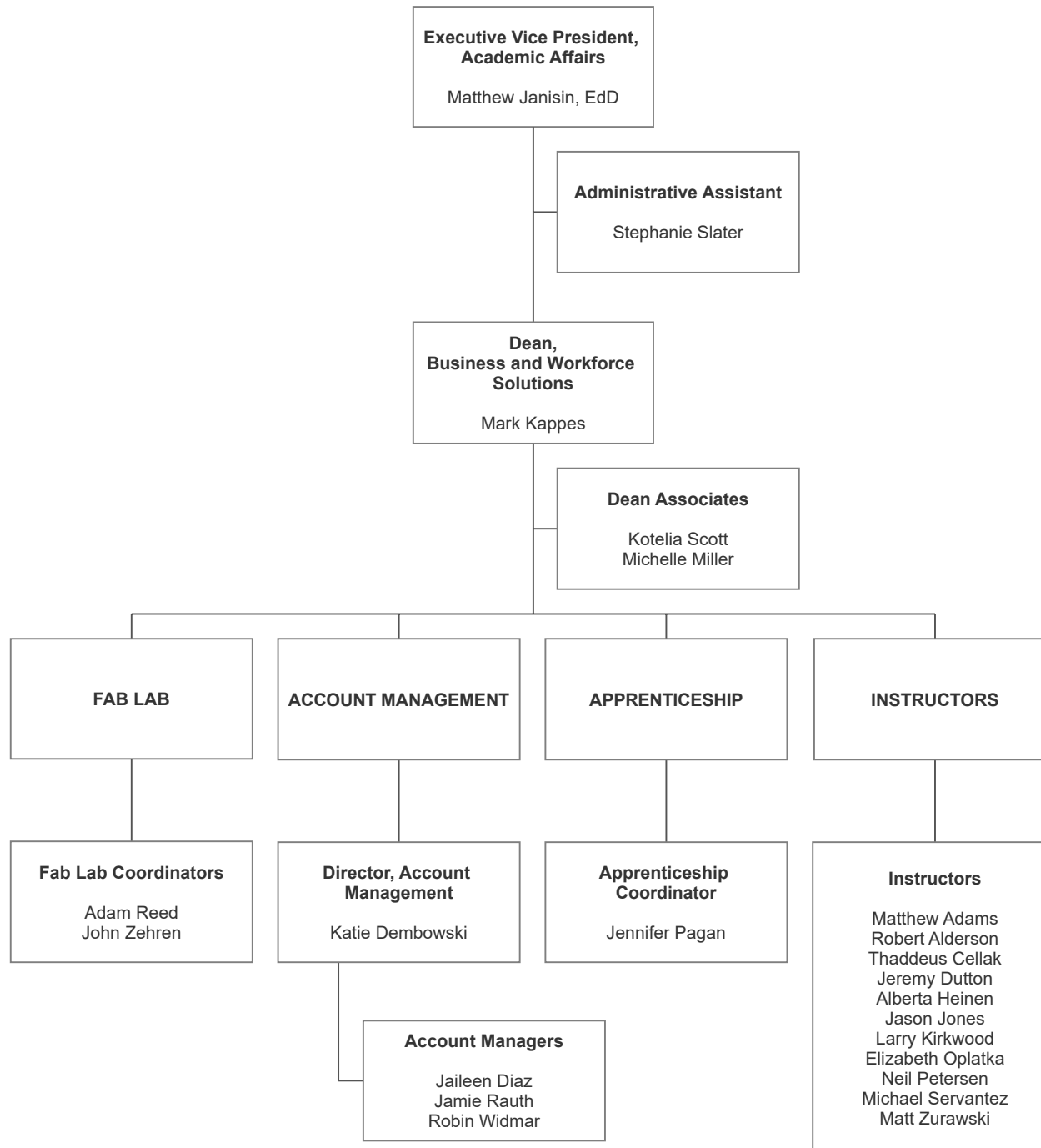
LIBRARY



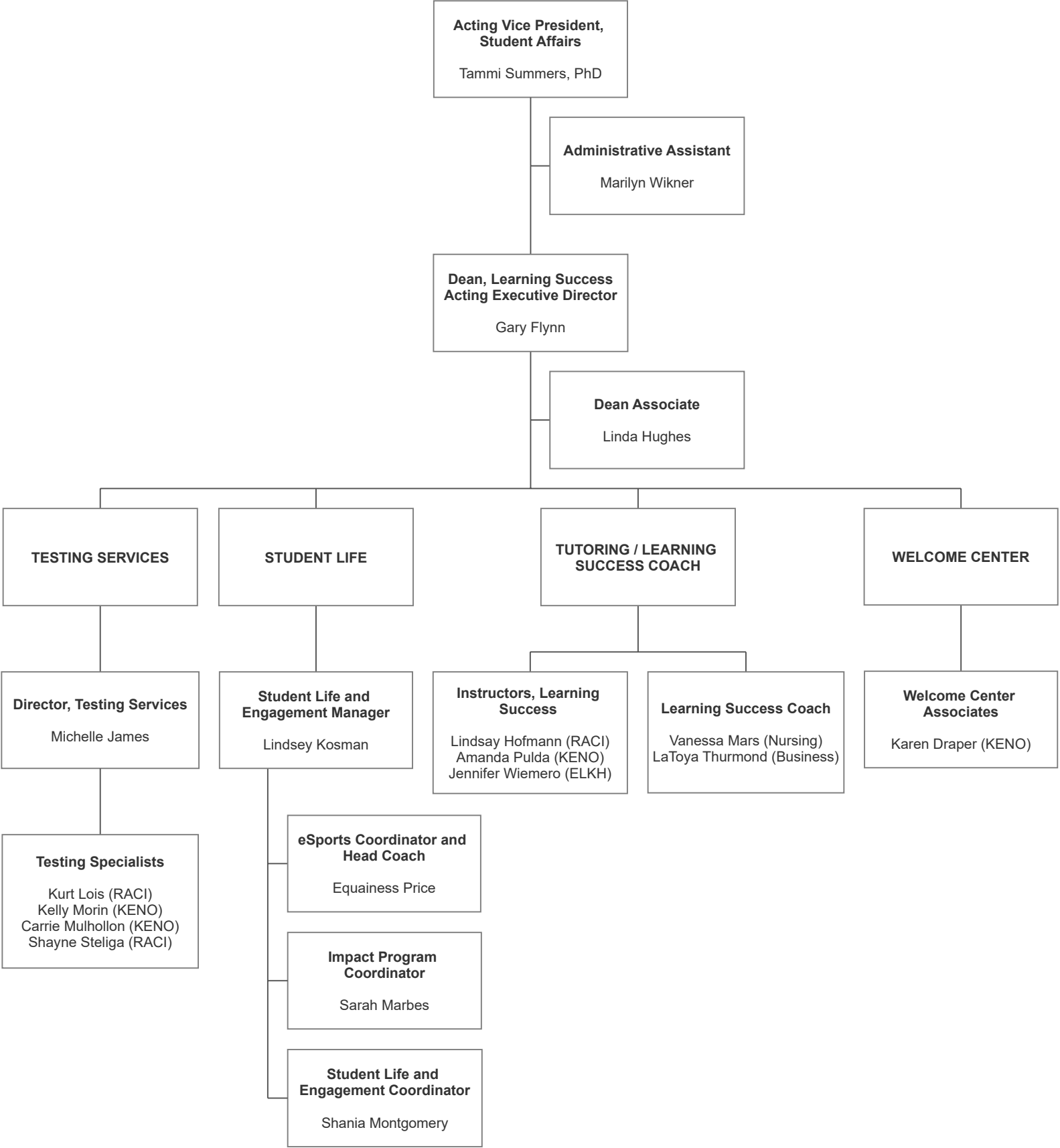
LEARNING INNOVATION DIVISION



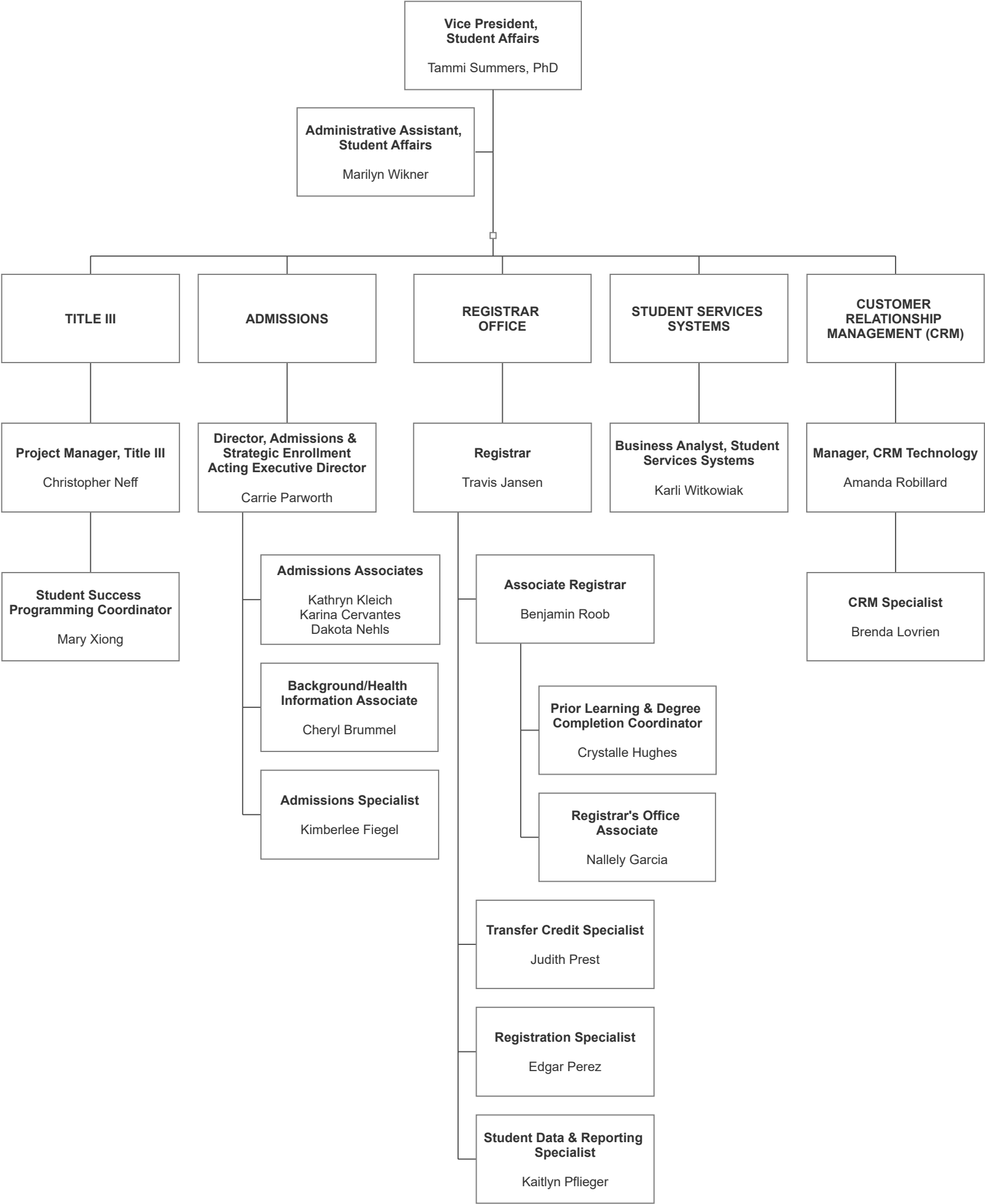
BUSINESS AND WORKFORCE SOLUTIONS



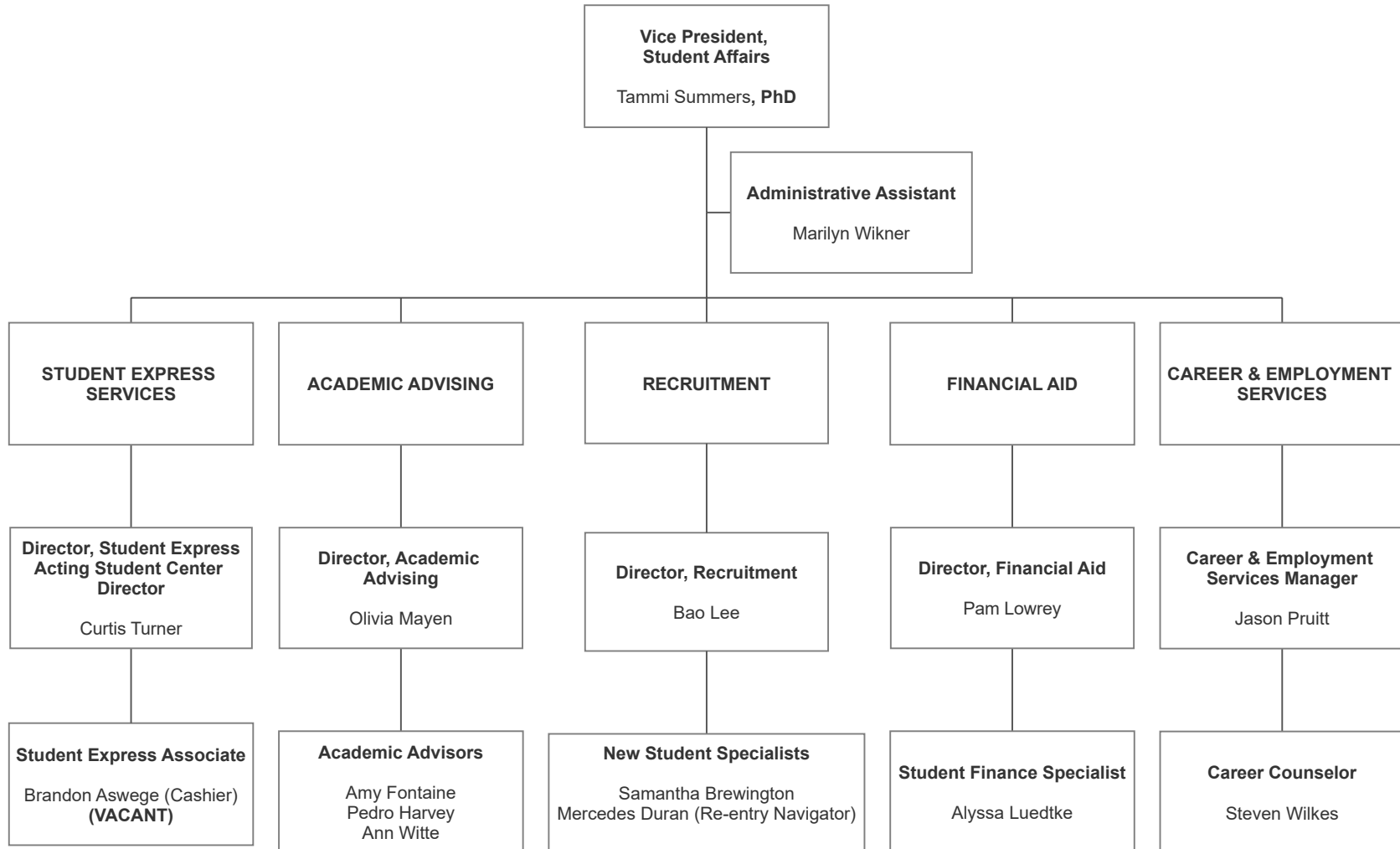
STUDENT AFFAIRS - LEARNING SUCCESS CENTER



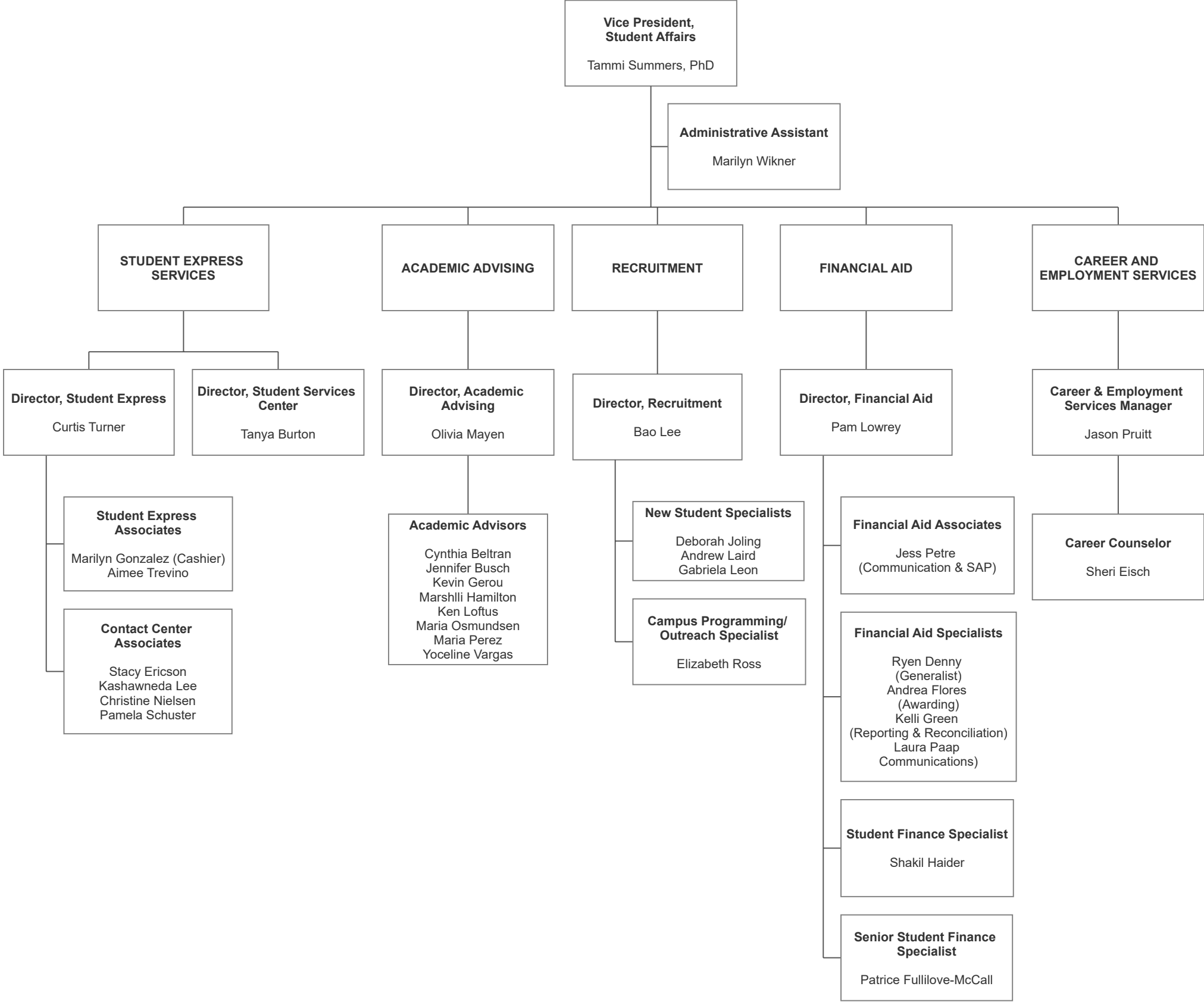
STUDENT AFFAIRS - STUDENT SUPPORT SERVICES



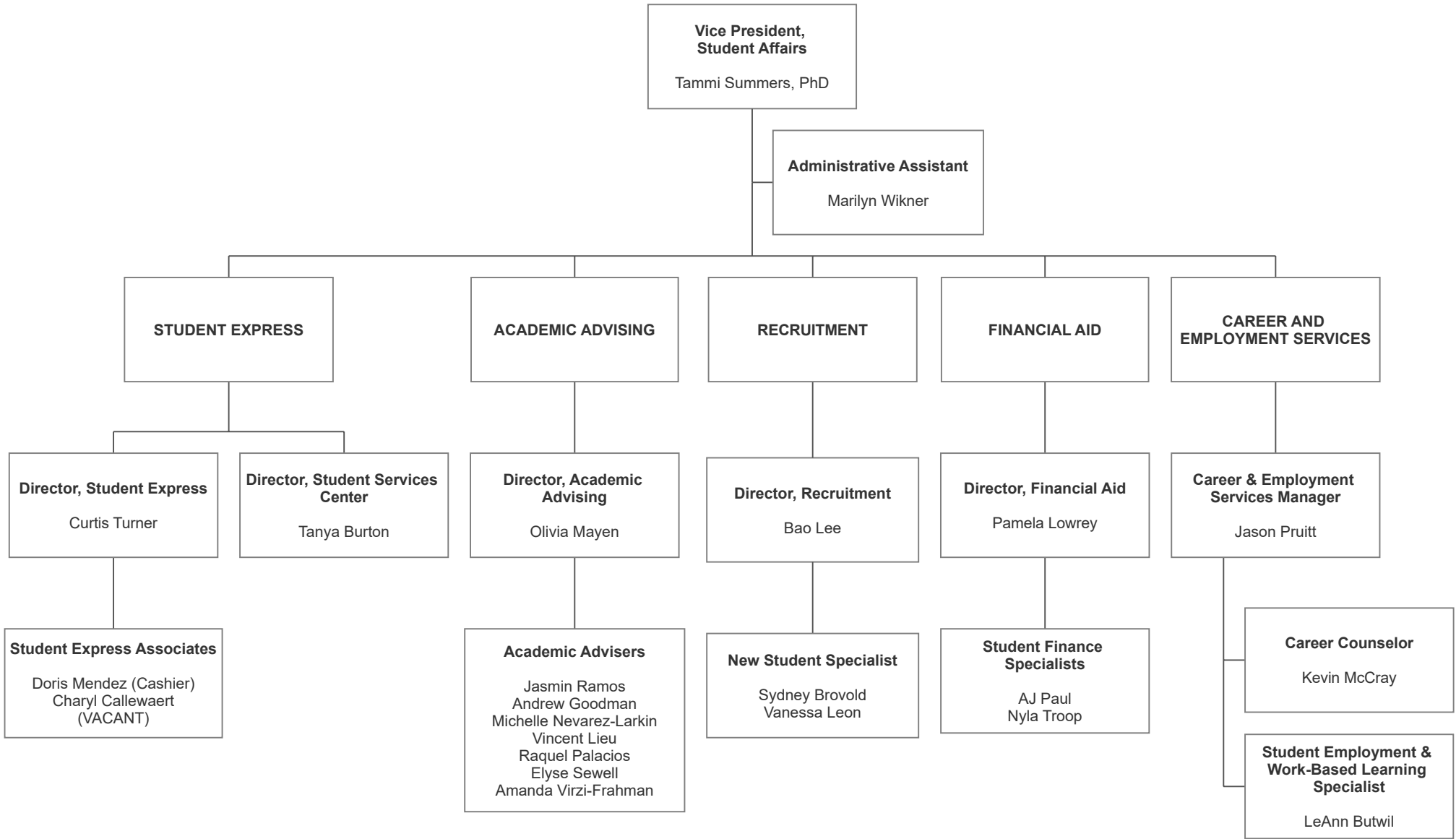
STUDENT AFFAIRS - STUDENT SERVICES CENTER (ELKHORN)



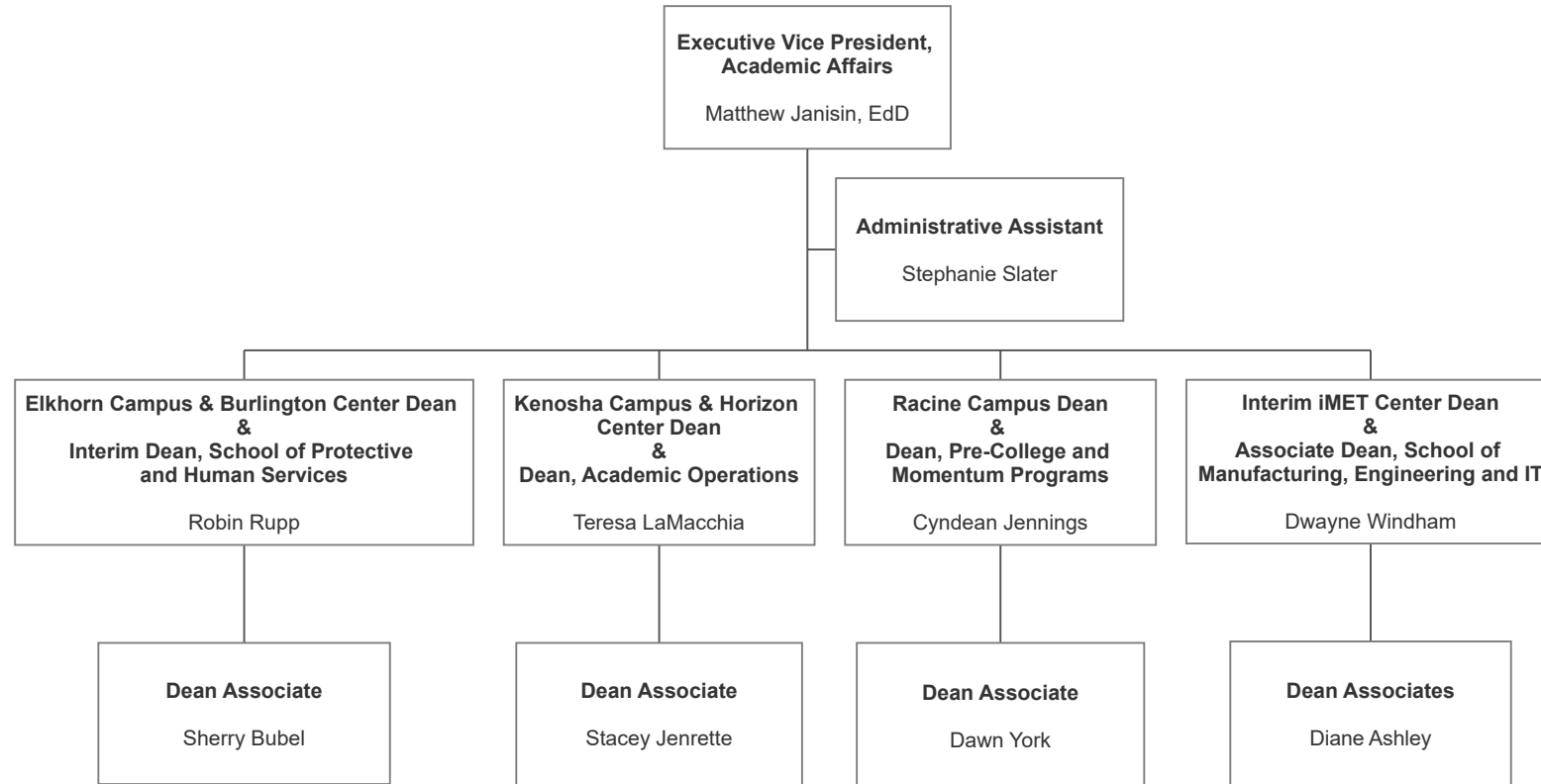
STUDENT AFFAIRS - STUDENT SERVICES CENTER (KENOSHA)



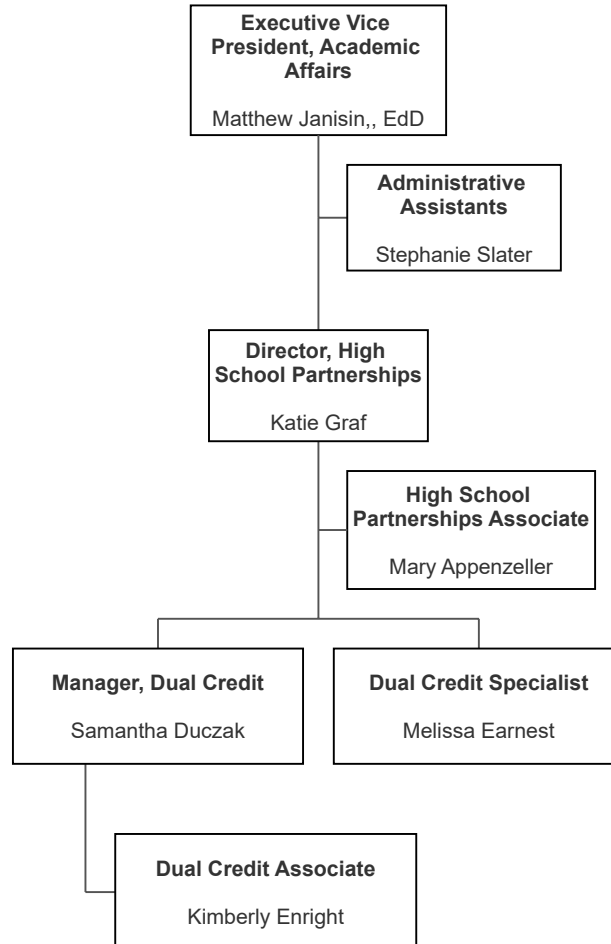
STUDENT AFFAIRS - STUDENT SERVICES CENTER (RACINE)



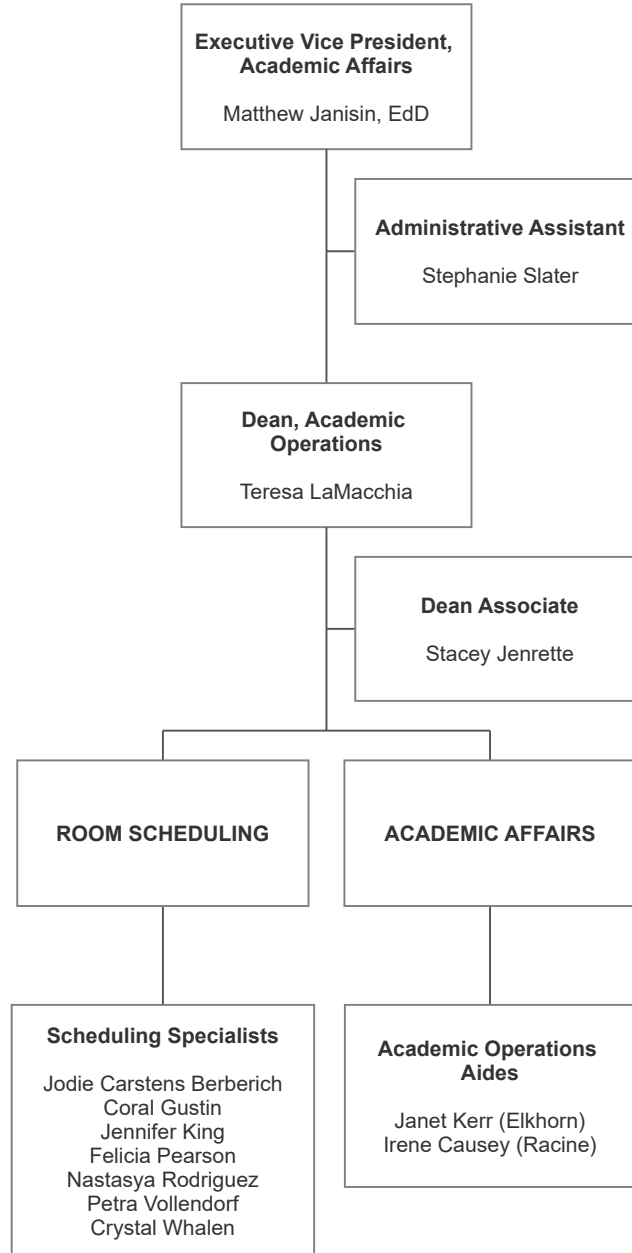
CAMPUS AFFAIRS (Campus & Center Deans)



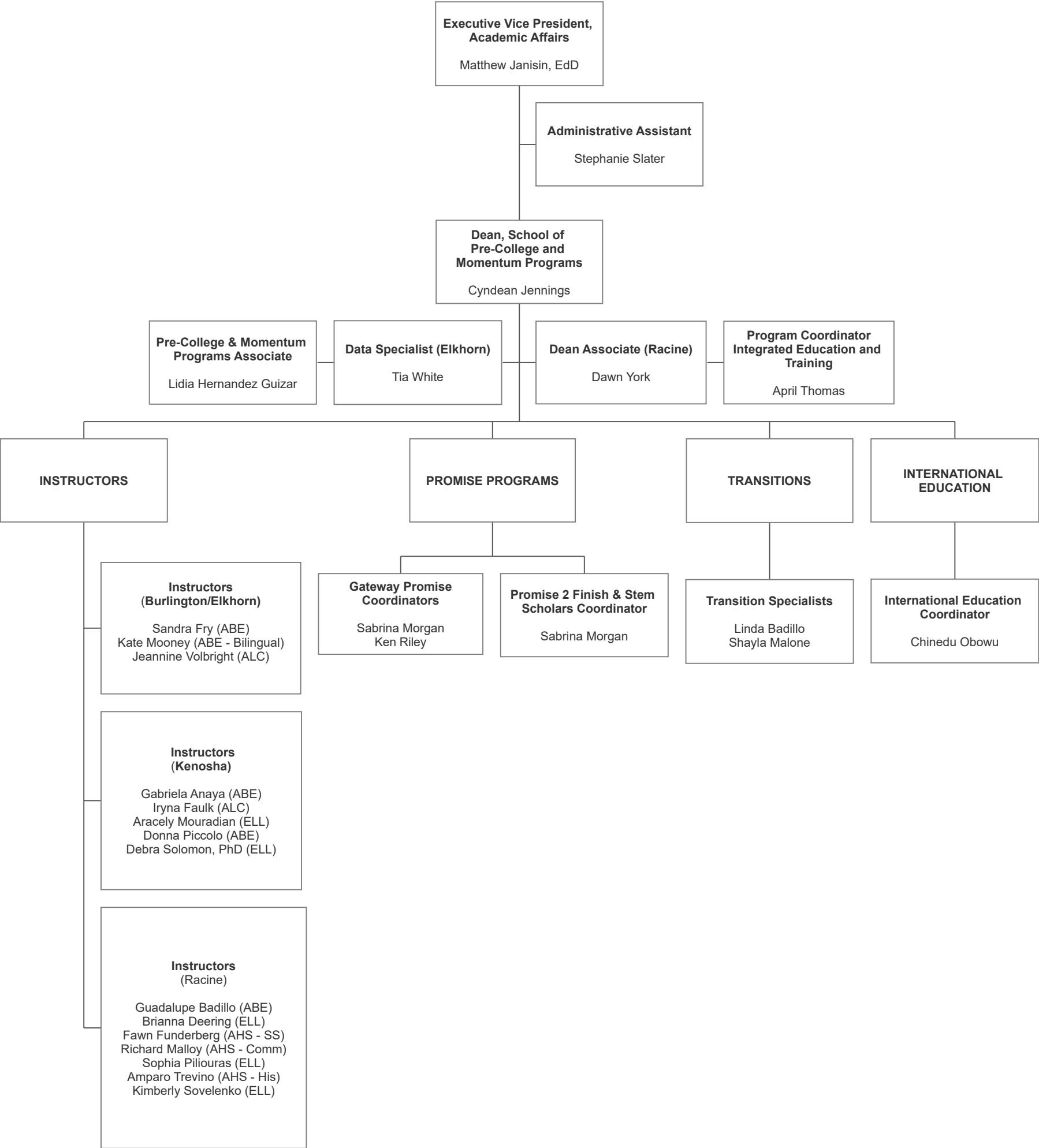
ACADEMIC AFFAIRS - HIGH SCHOOL PARTNERSHIPS



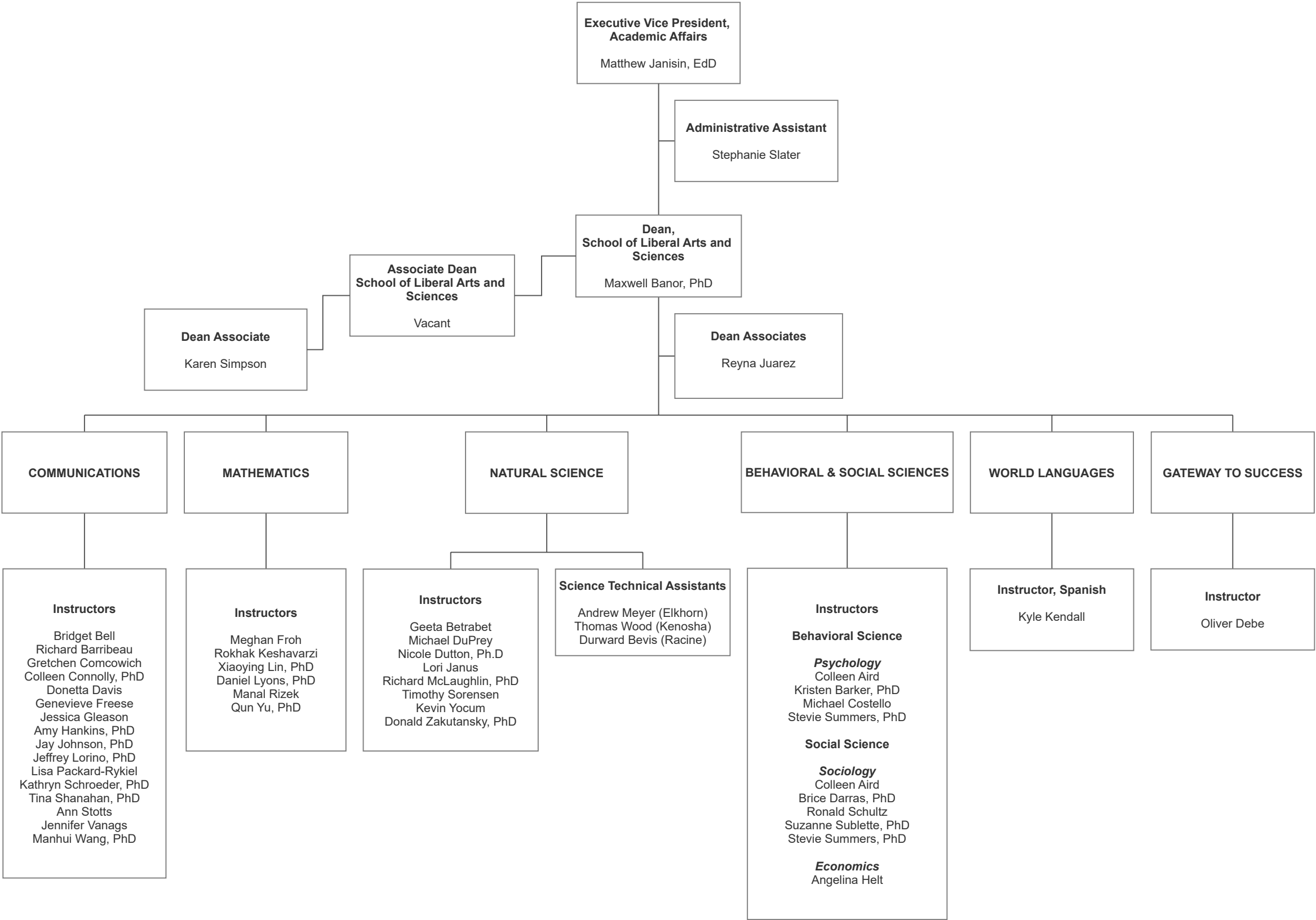
ACADEMIC OPERATIONS



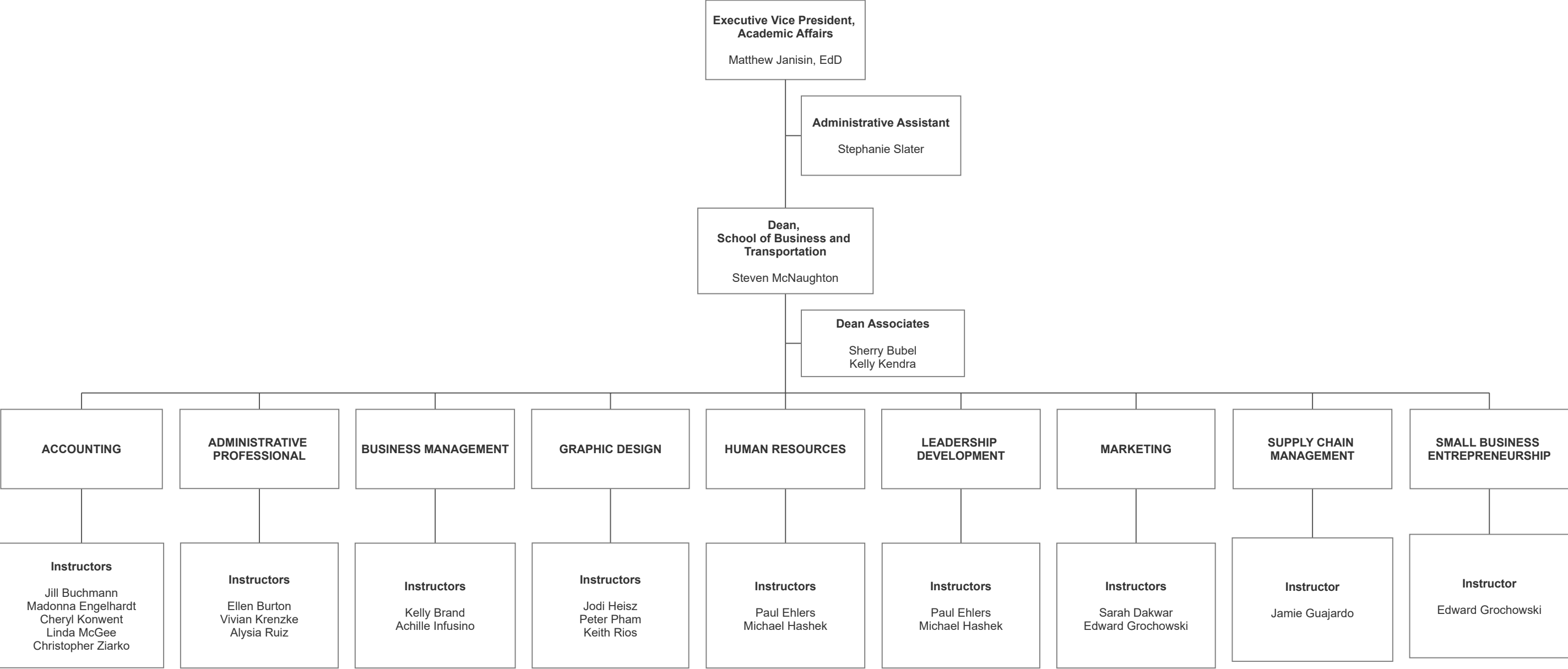
SCHOOL OF PRE-COLLEGE AND MOMENTUM PROGRAMS



SCHOOL OF LIBERAL ARTS AND SCIENCES



SCHOOL OF BUSINESS AND TRANSPORTATION



SCHOOL OF BUSINESS AND TRANSPORTATION

**Executive Vice President,
Academic Affairs**

Matthew Janisin, EdD

Administrative Assistant

Stephanie Slater

**Dean, School of
Business and Transportation**

Steven McNaughton

Dean Associates

Sherry Bubel
Kendra Kelly

AERONAUTICS

Director and Chief Pilot

Gregory Patchel

Instructors, Aeronautics

Matthew Borgardt
Craig Czerwinski

**AUTOMOTIVE
TECHNOLOGY**

**Instructors, Automotive
Technology**

Mathew Baran
William Fell
Nicholas Schick

**COMMERCIAL DRIVERS
LICENCE (CDL)**

**Instructor, CDL/Truck
Driving**

Gahdius Jones

**DIESEL
TECHNOLOGY**

Instructors

Casey Grapsas
Earnest Infusino
Patrick Stevens

SMALL ENGINES

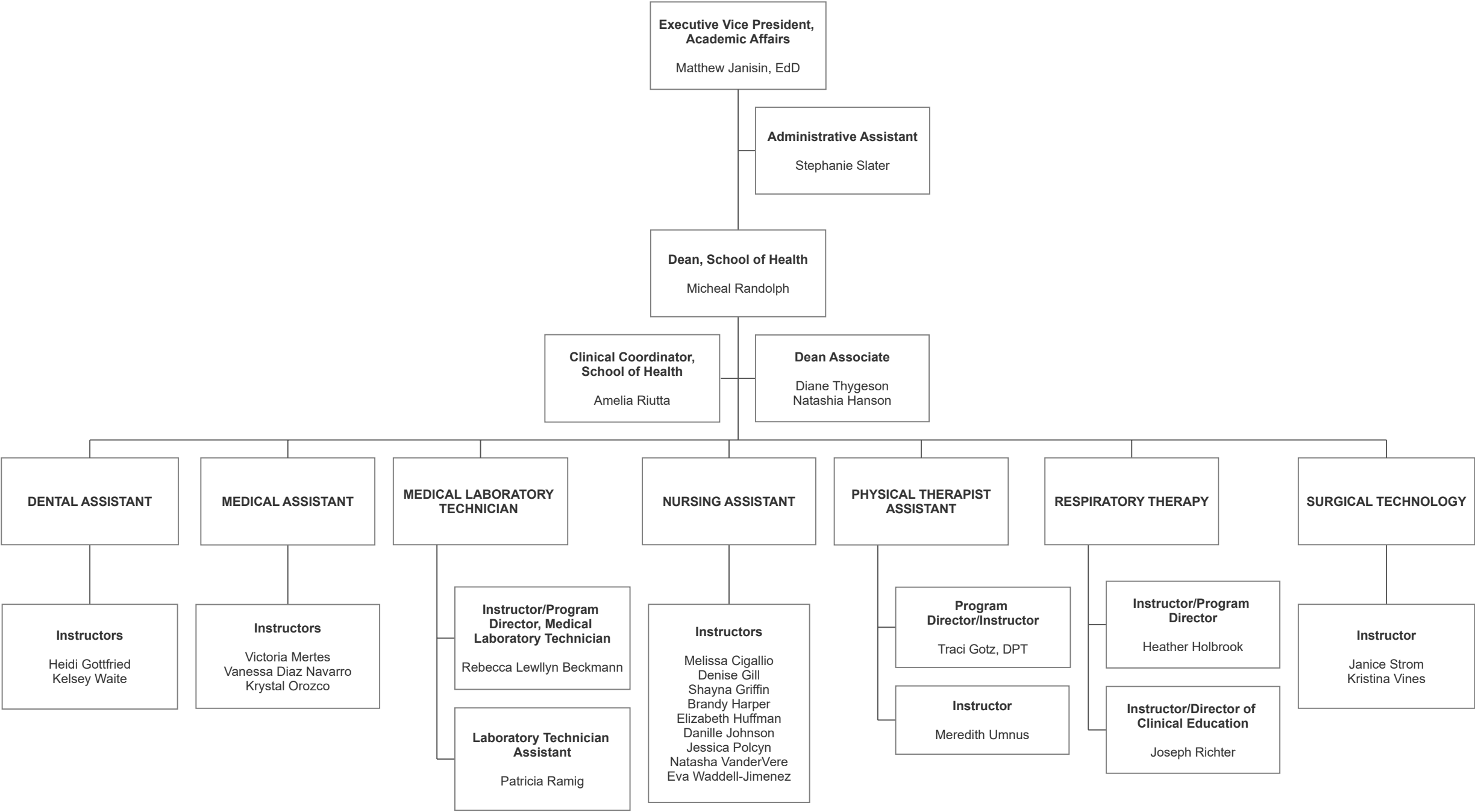
**Instructor, Motorcycle, Marine
and Outdoor Power Products**

Michael Renzoni

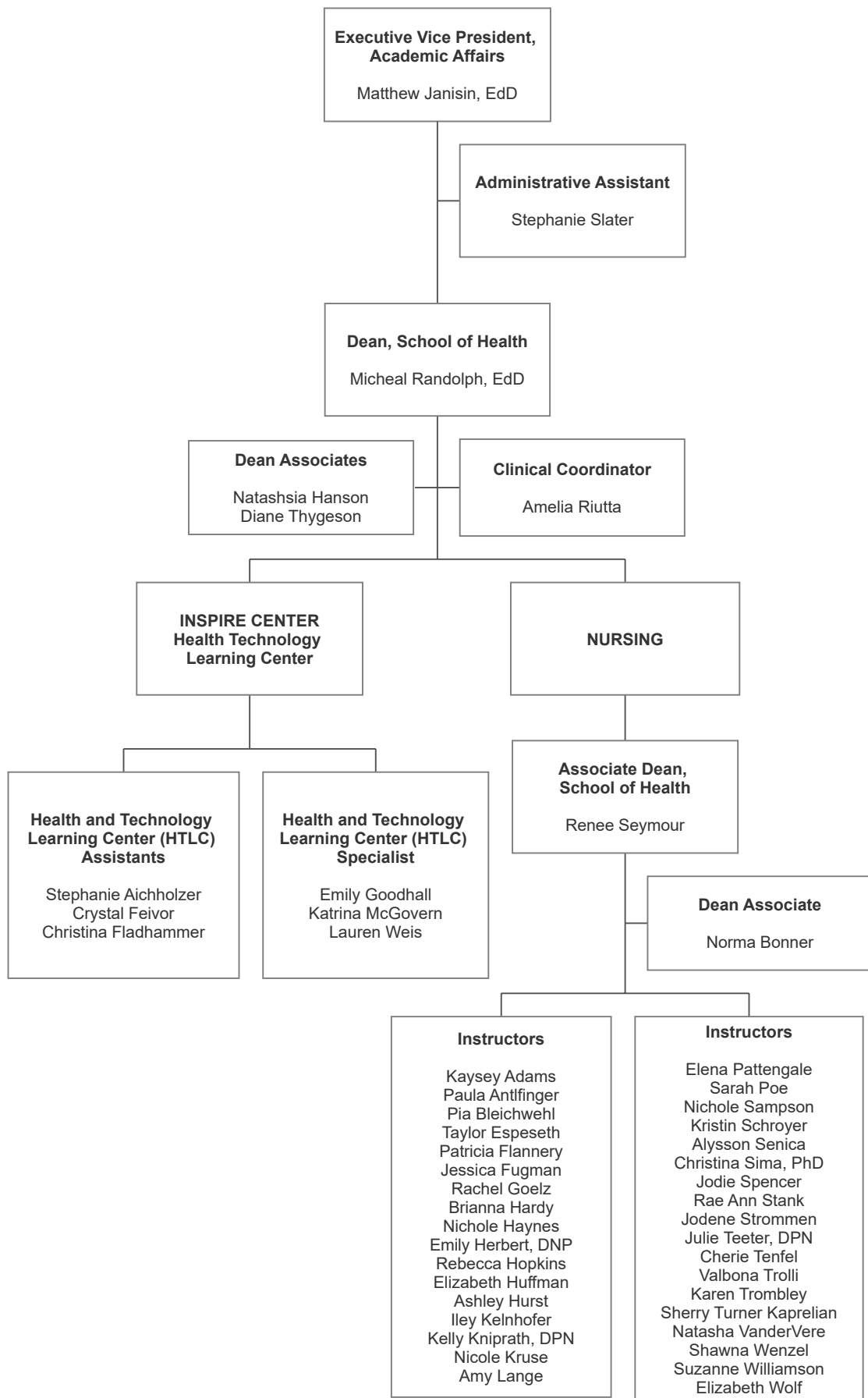
**TOOL
CRIB/PREVENTATIVE
MAINTENANCE
TECHNICIAN**

Lorenc Gasparov

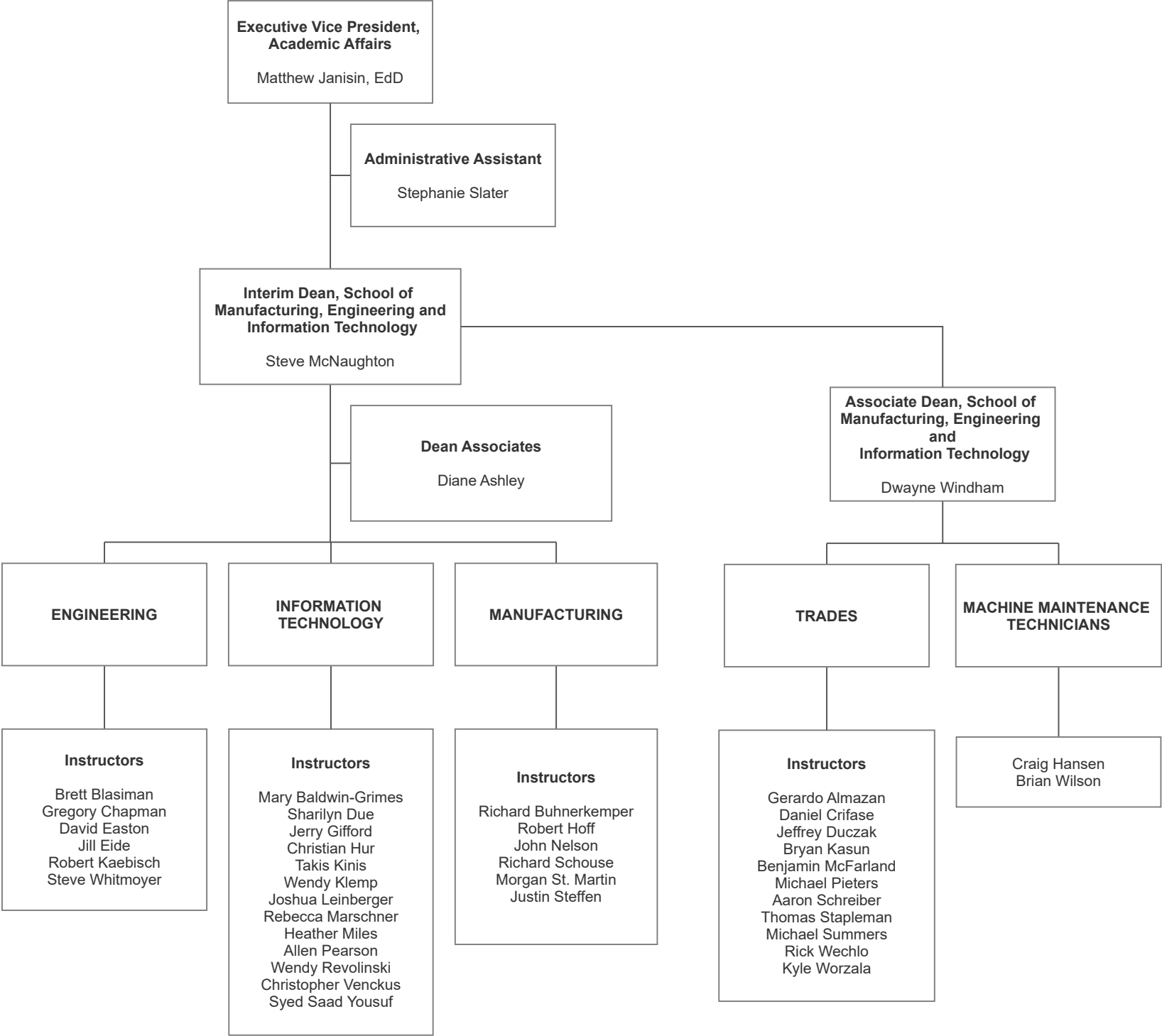
SCHOOL OF HEALTH - ALLIED



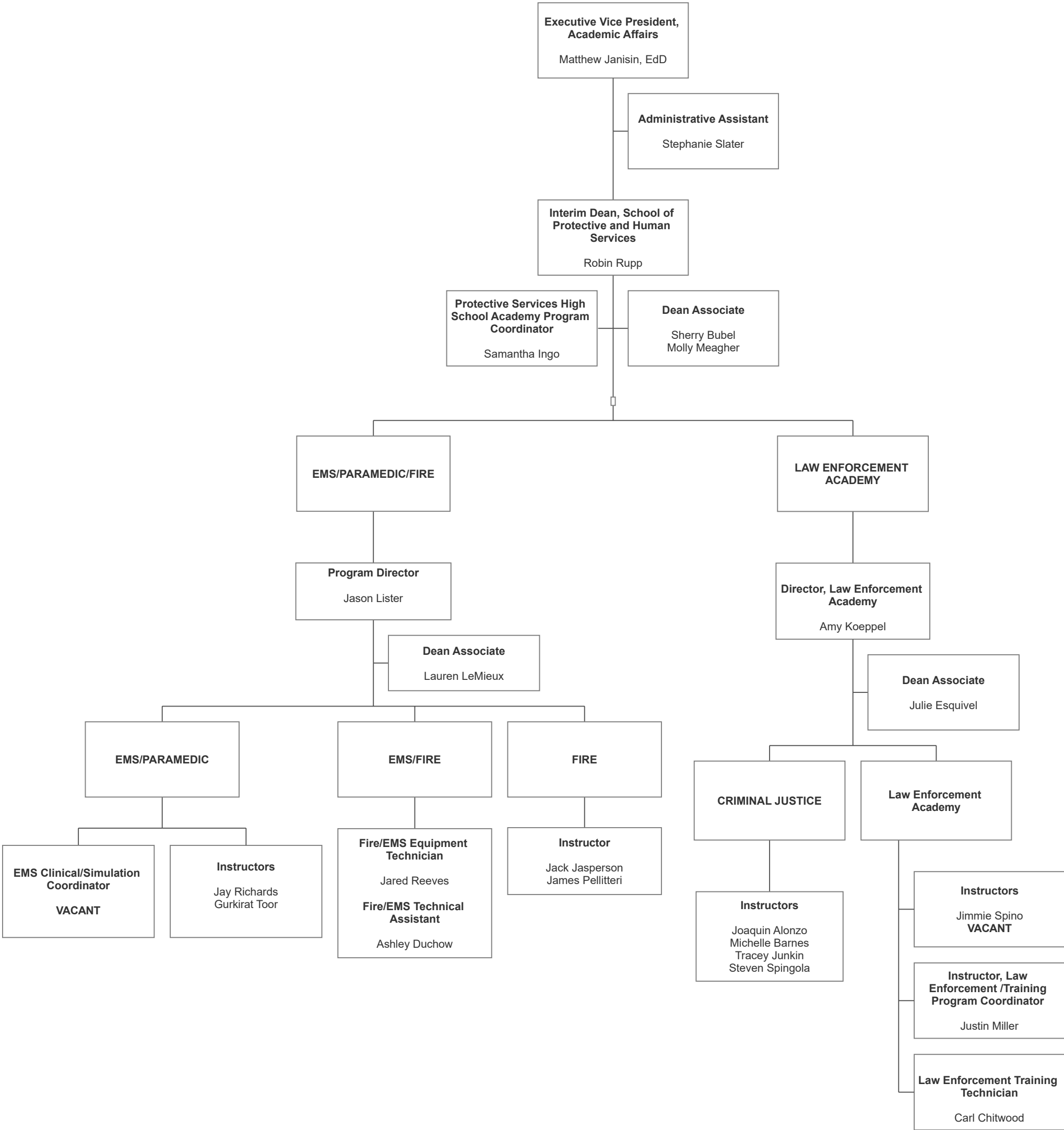
SCHOOL OF HEALTH - NURSING



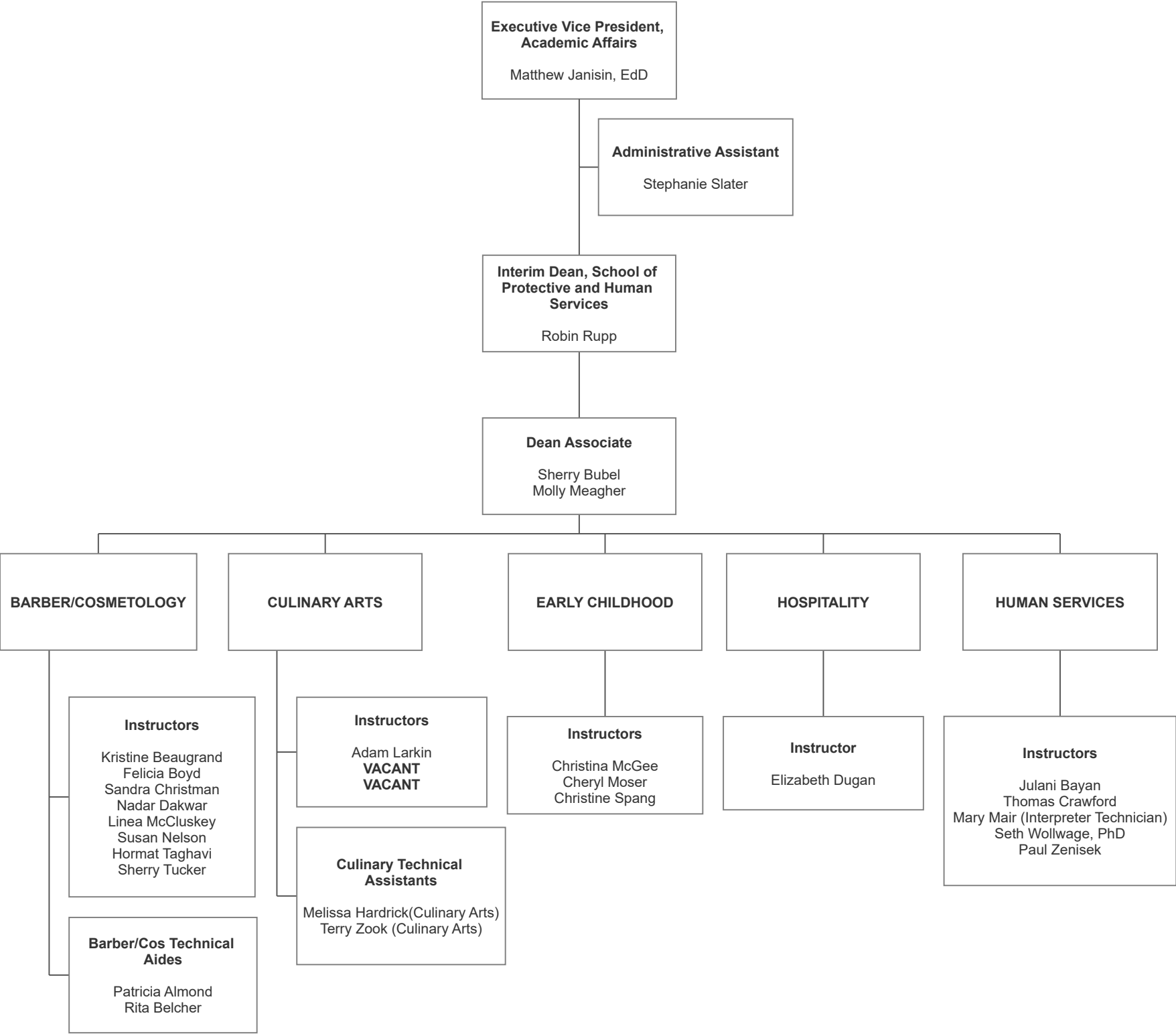
SCHOOL OF MANUFACTURING, ENGINEERING AND INFORMATION TECHNOLOGY



SCHOOL OF PROTECTIVE AND HUMAN SERVICES



SCHOOL OF PROTECTIVE AND HUMAN SERVICES



SCHOOL OF PROTECTIVE AND HUMAN SERVICES

