

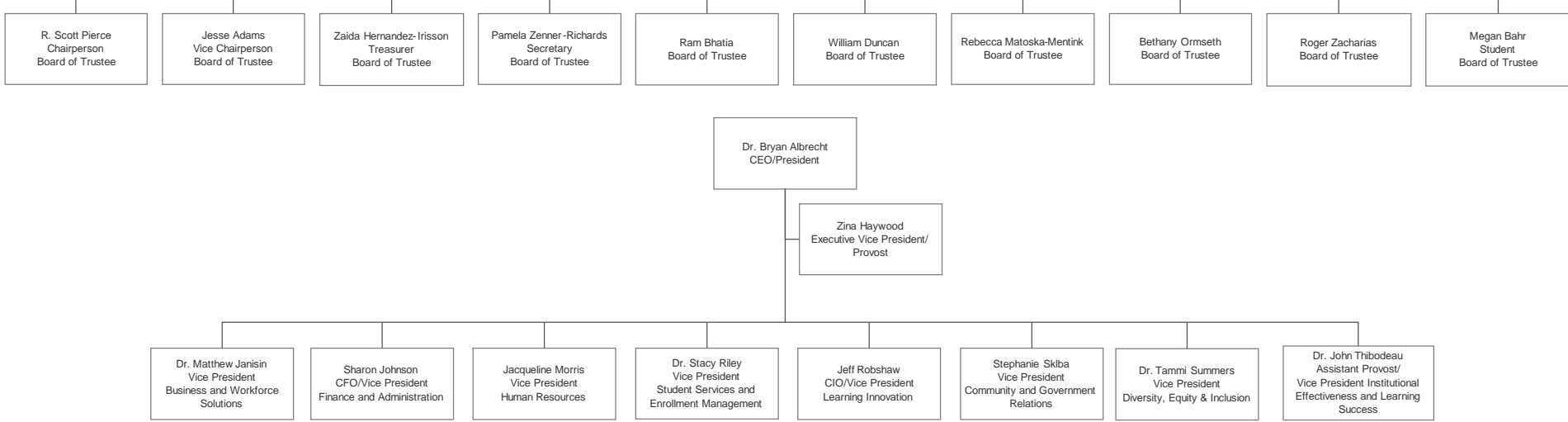
GATEWAY TECHNICAL COLLEGE ORGANIZATIONAL CHART

June 2021

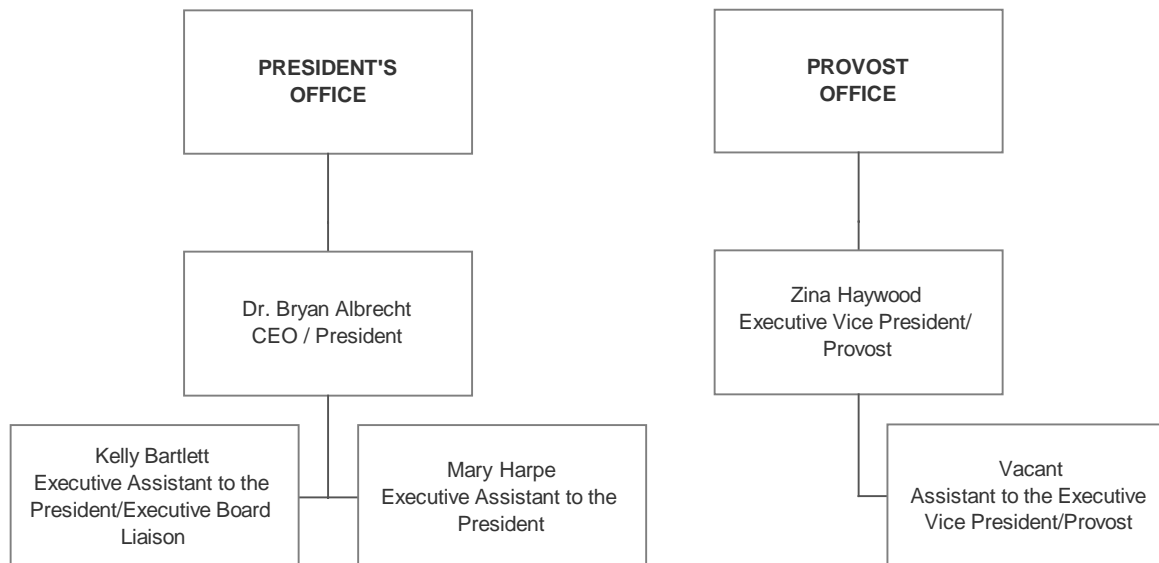
TABLE OF CONTENTS

Academic Operations	21
Campus Affairs	20
Board of Trustees and Executive Leadership Committee	3
Business Office	5
Business and Workforce Solutions	12
Community and Government Relations	6
Enrollment Management	16
Executive Leadership	4
Facilities and Security	7
Financial Aid	16
Foundation	6
General Studies Division	23
Human Resources	8
Institutional Effectiveness	10
Learning Innovation	11
Learning Success	13 - 15
Library	10
Marketing	6
Office of Diversity, Equity and Inclusion	7
Operations	4
Pre-College Programs	22
President's Office	4
Provost Office	4
Registrar Office	16
School of Business and Transportation	24-25
School of Health	26-27
School of Manufacturing, Engineering and Informational Technology	28
School of Protective and Human Services	29-31
Student Services	16 - 19
WGTD - Radio Station	6

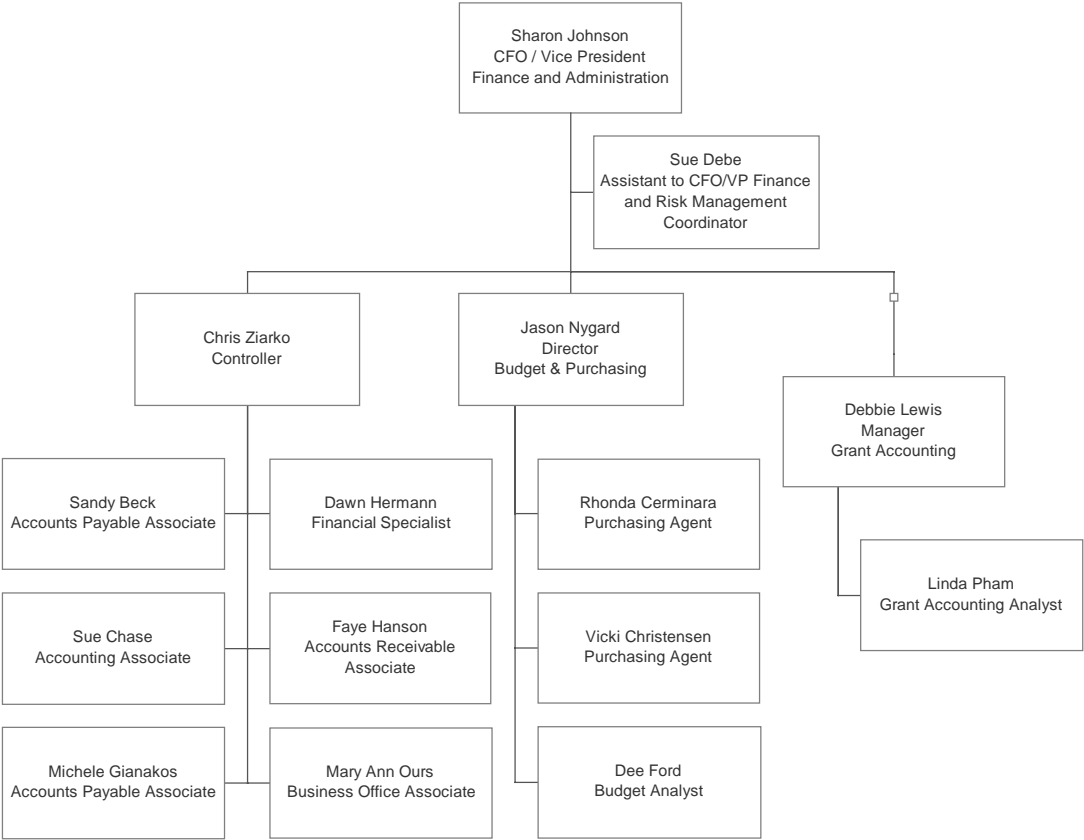
**BOARD OF TRUSTEES
AND
EXECUTIVE LEADERSHIP COMMITTEE**



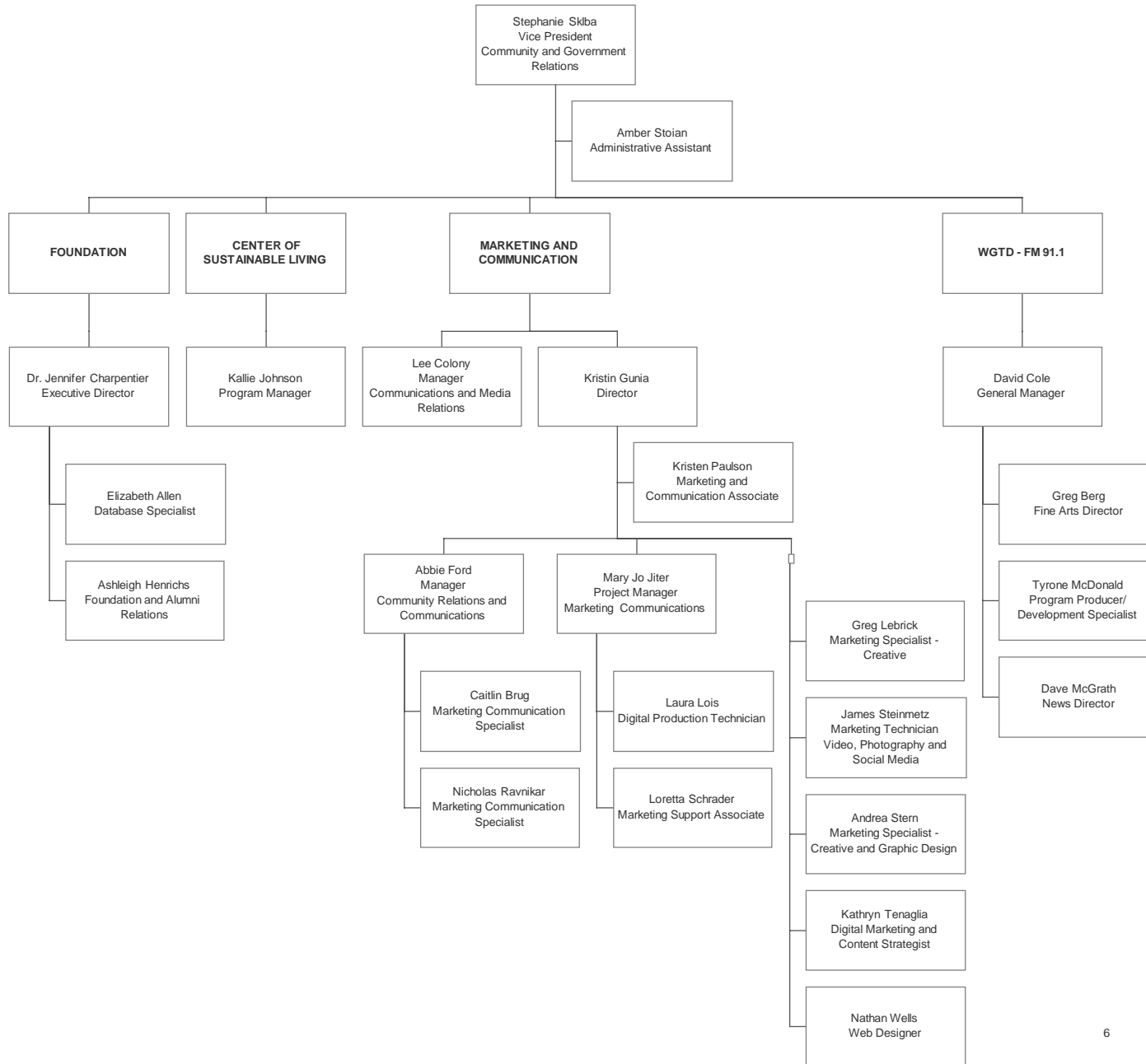
EXECUTIVE LEADERSHIP



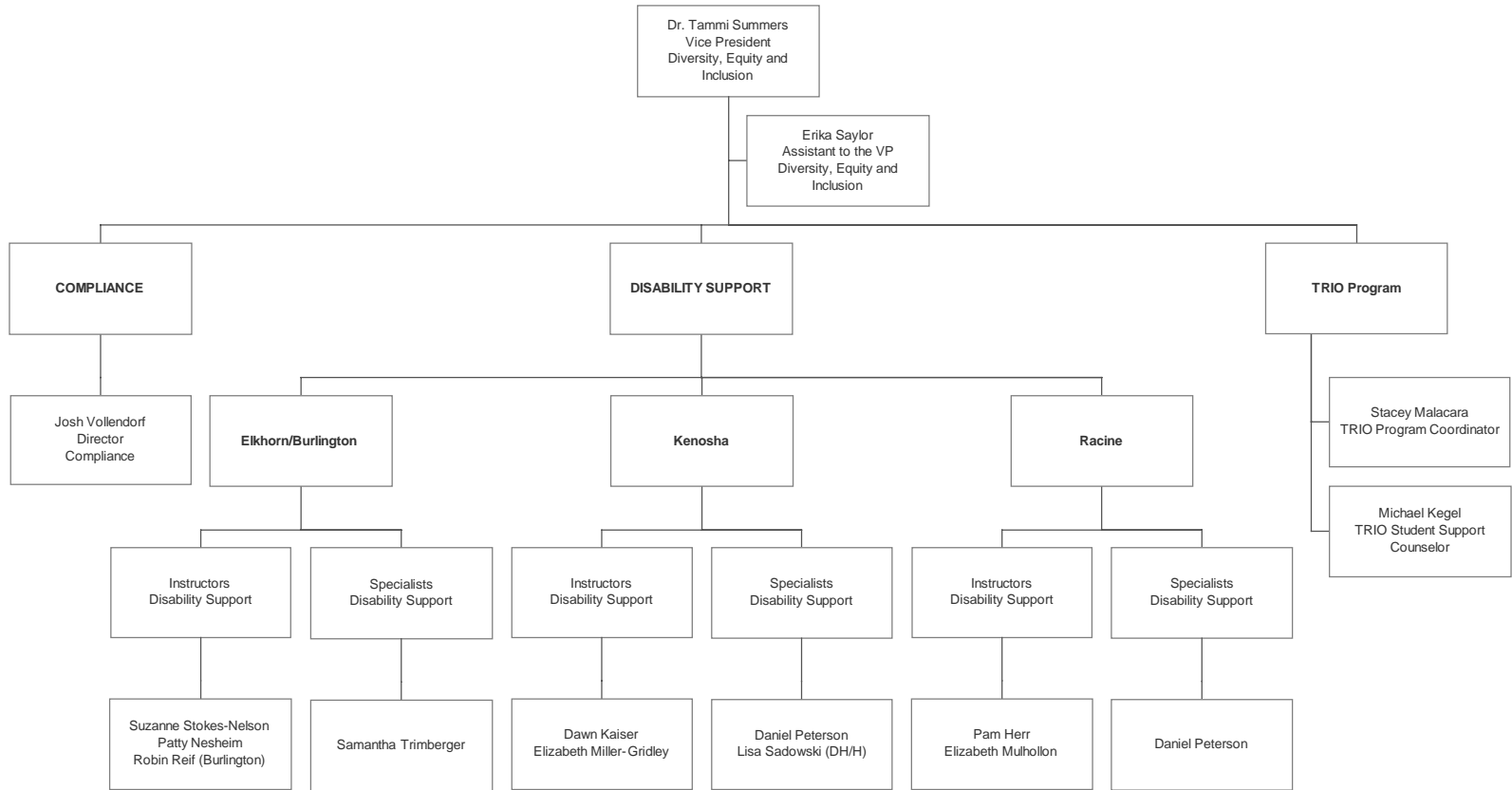
BUSINESS OFFICE



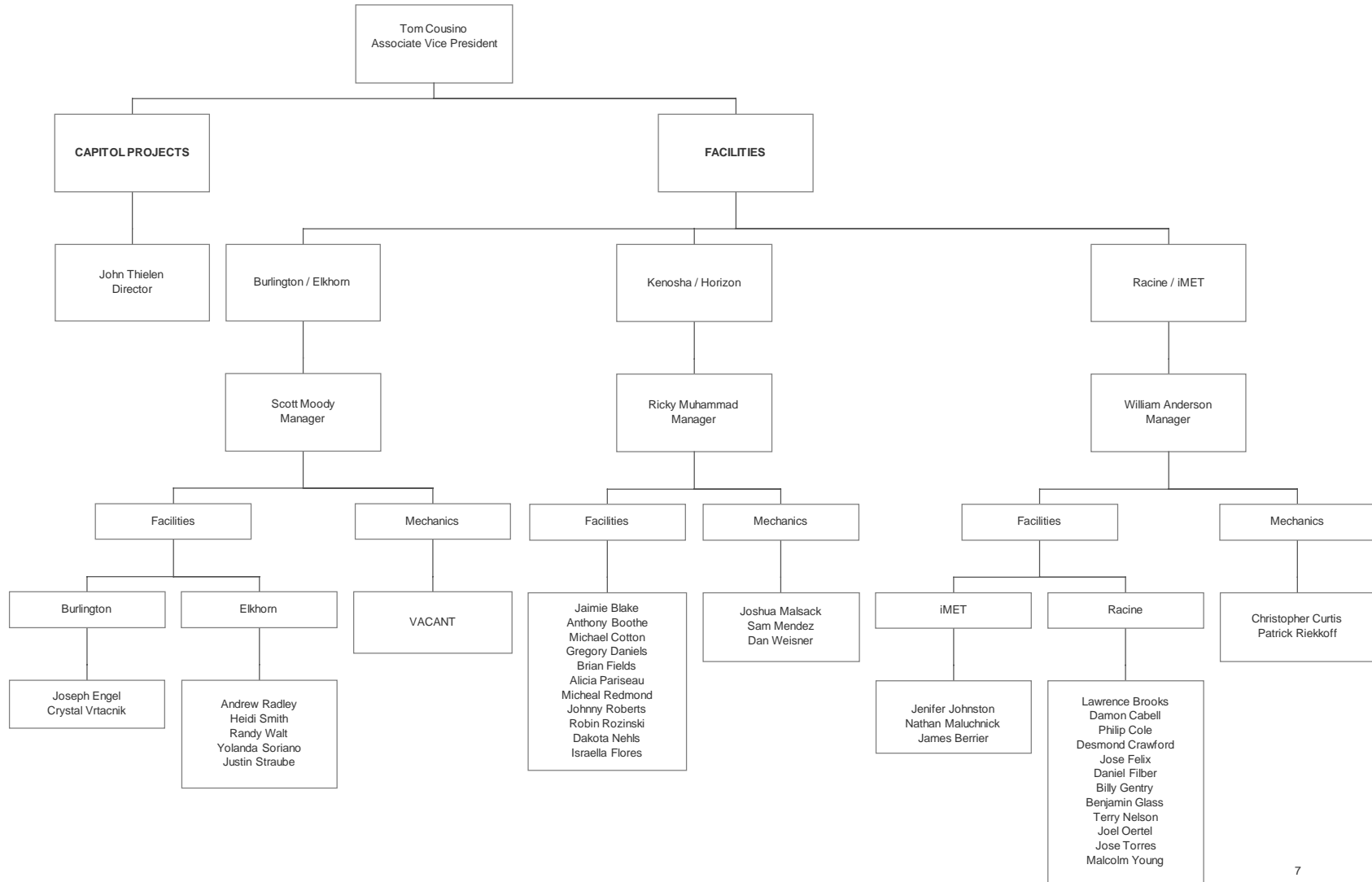
COMMUNITY AND GOVERNMENT RELATIONS



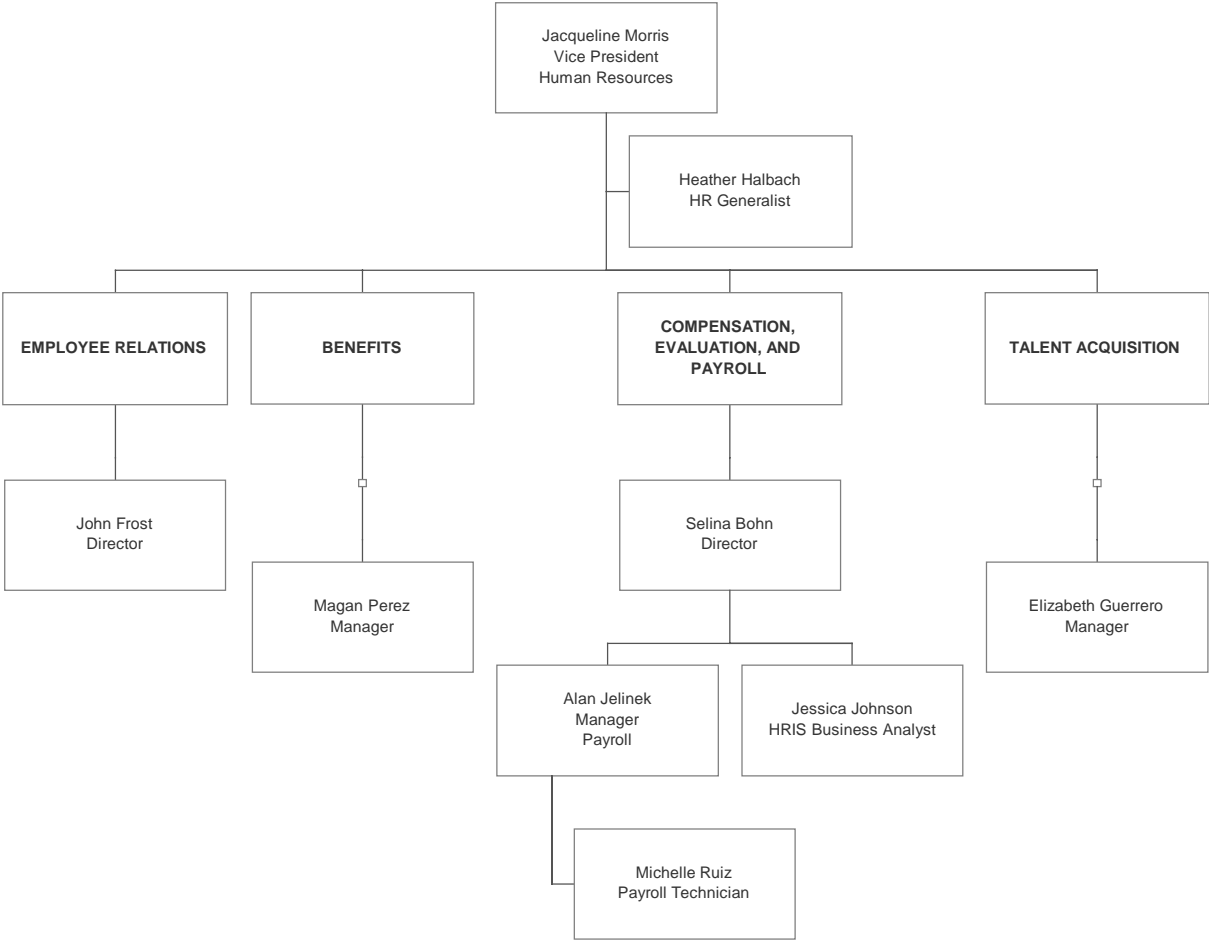
OFFICE OF DIVERSITY, EQUITY AND INCLUSION



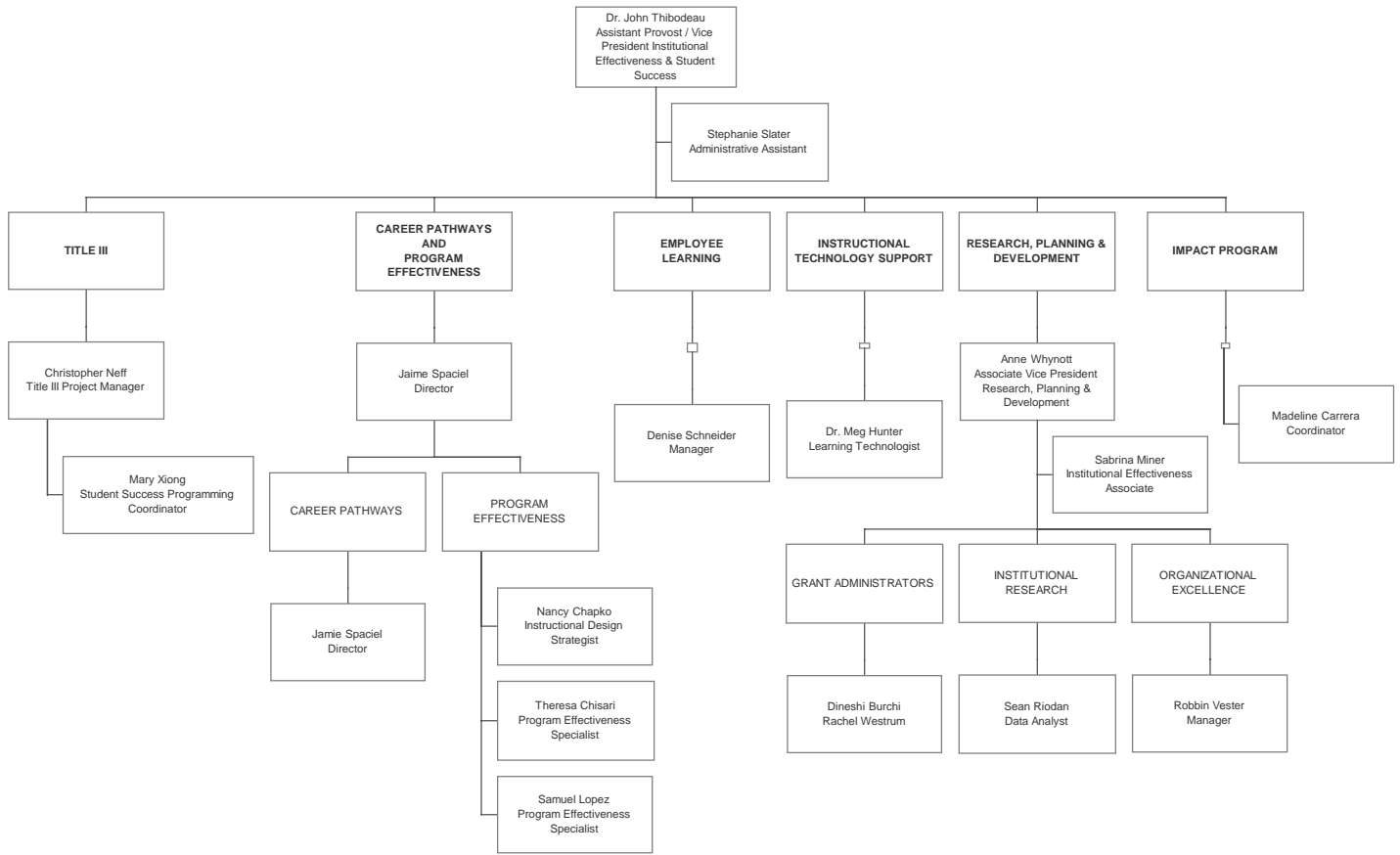
FACILITIES AND SECURITY



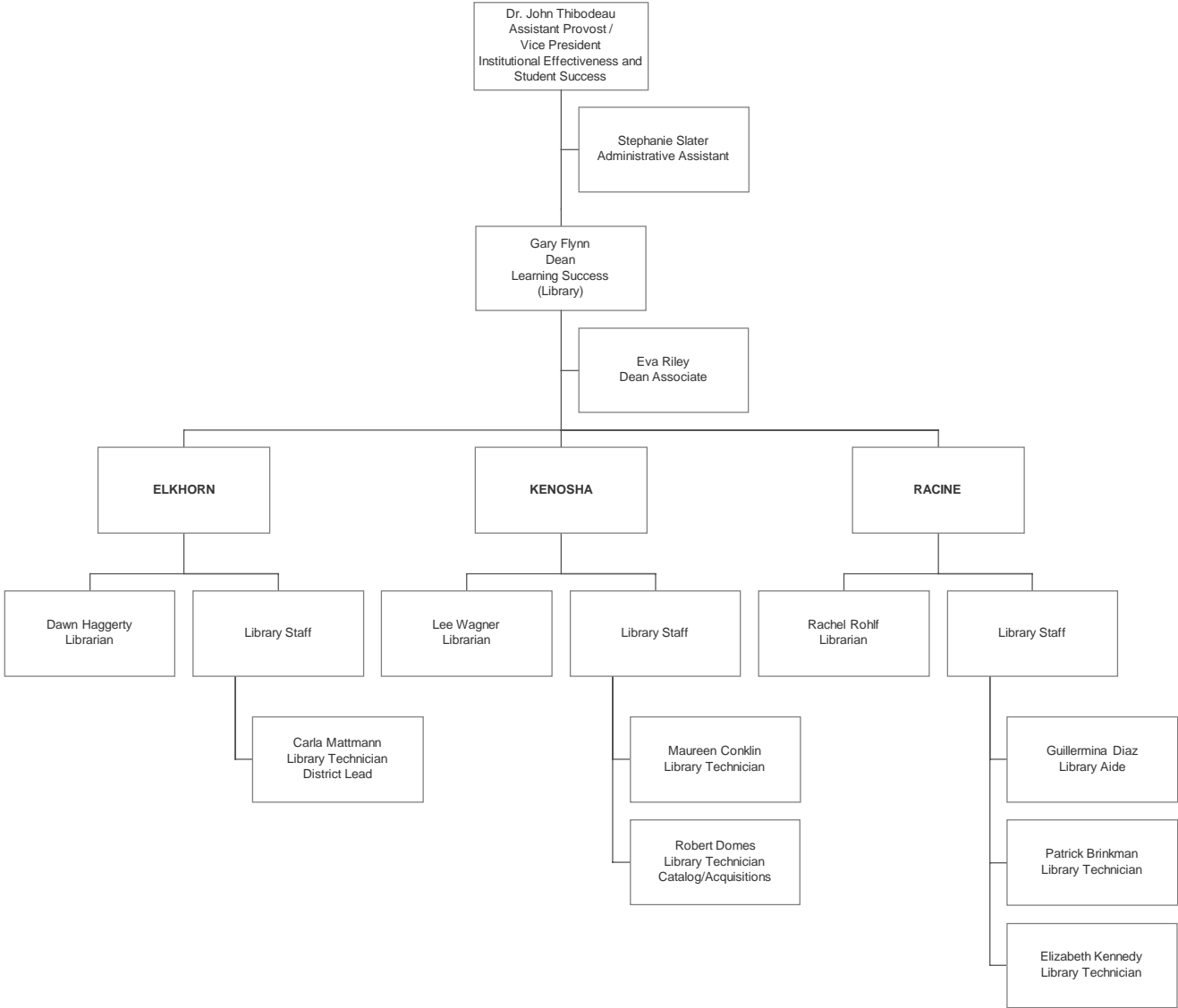
HUMAN RESOURCES



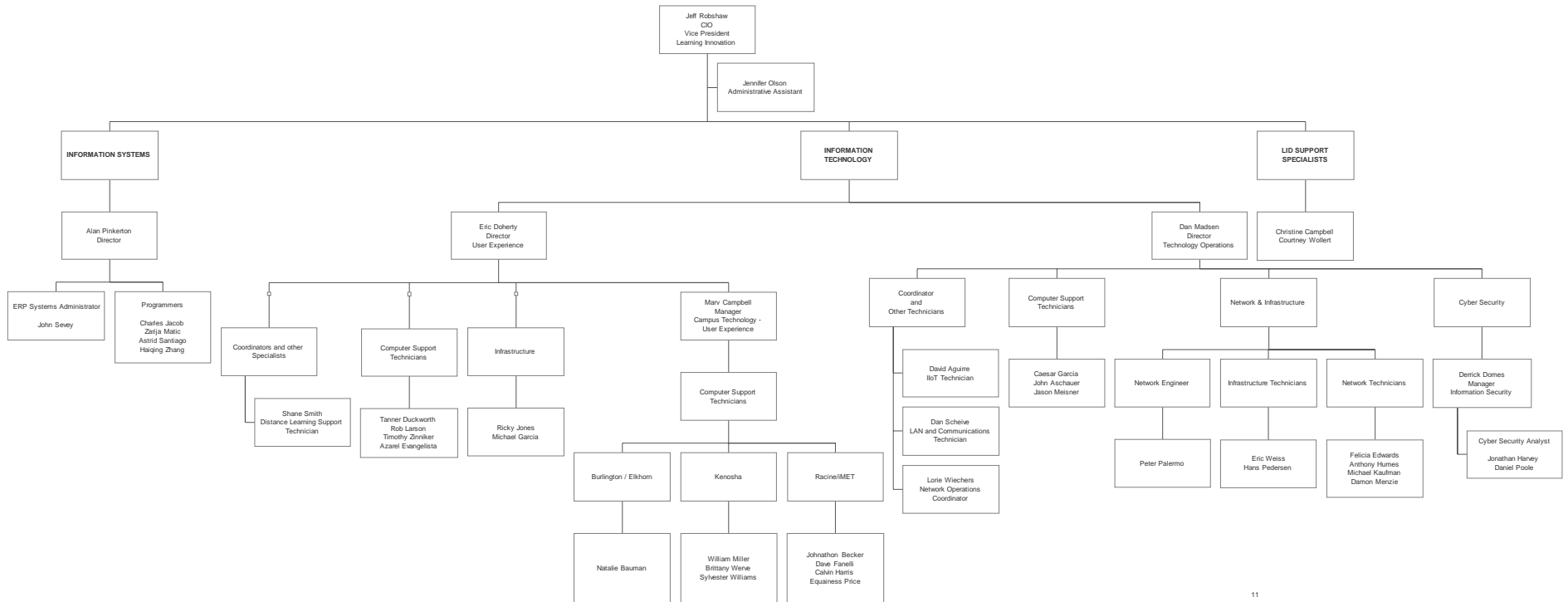
INSTITUTIONAL EFFECTIVENESS



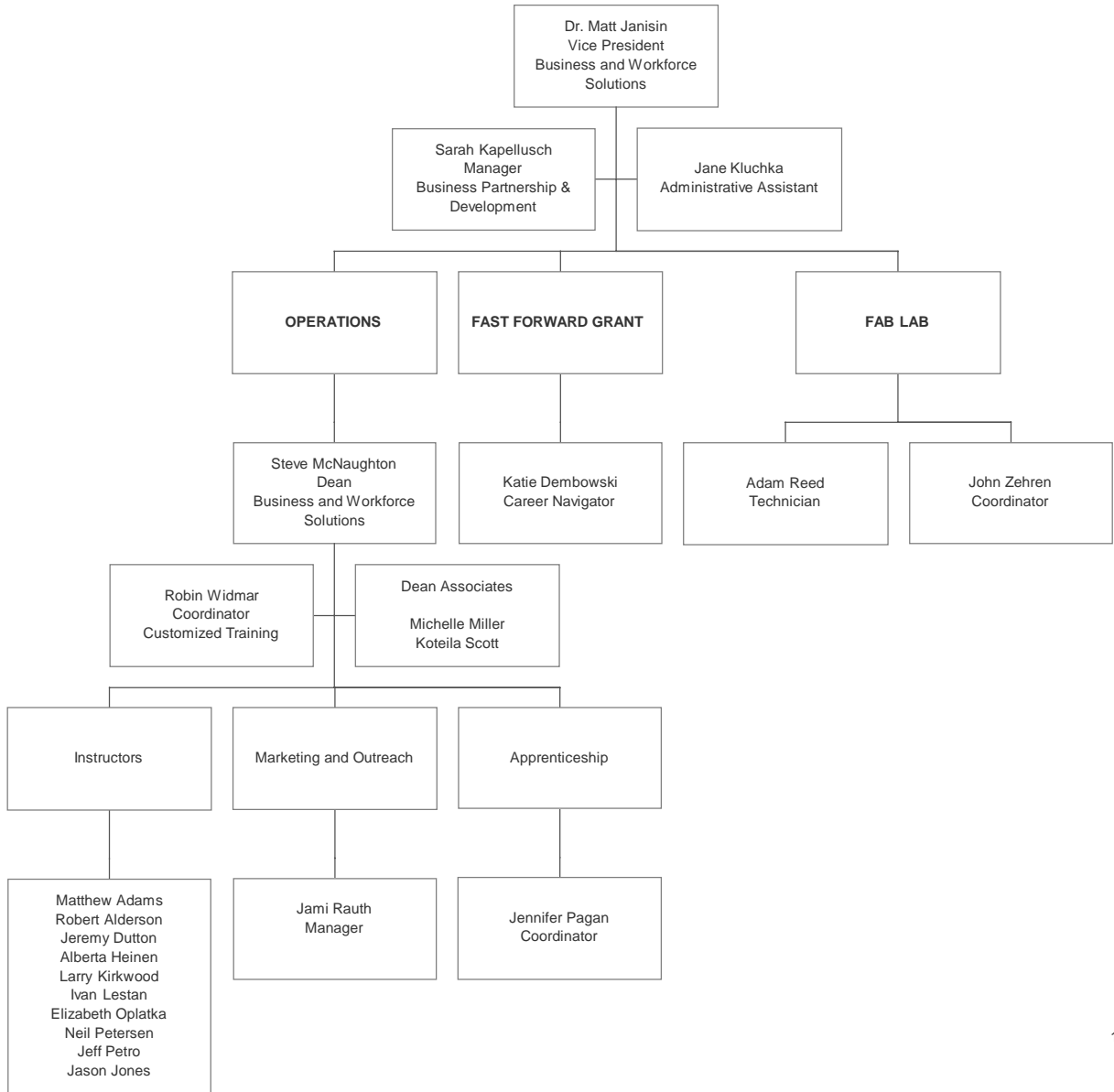
LIBRARY



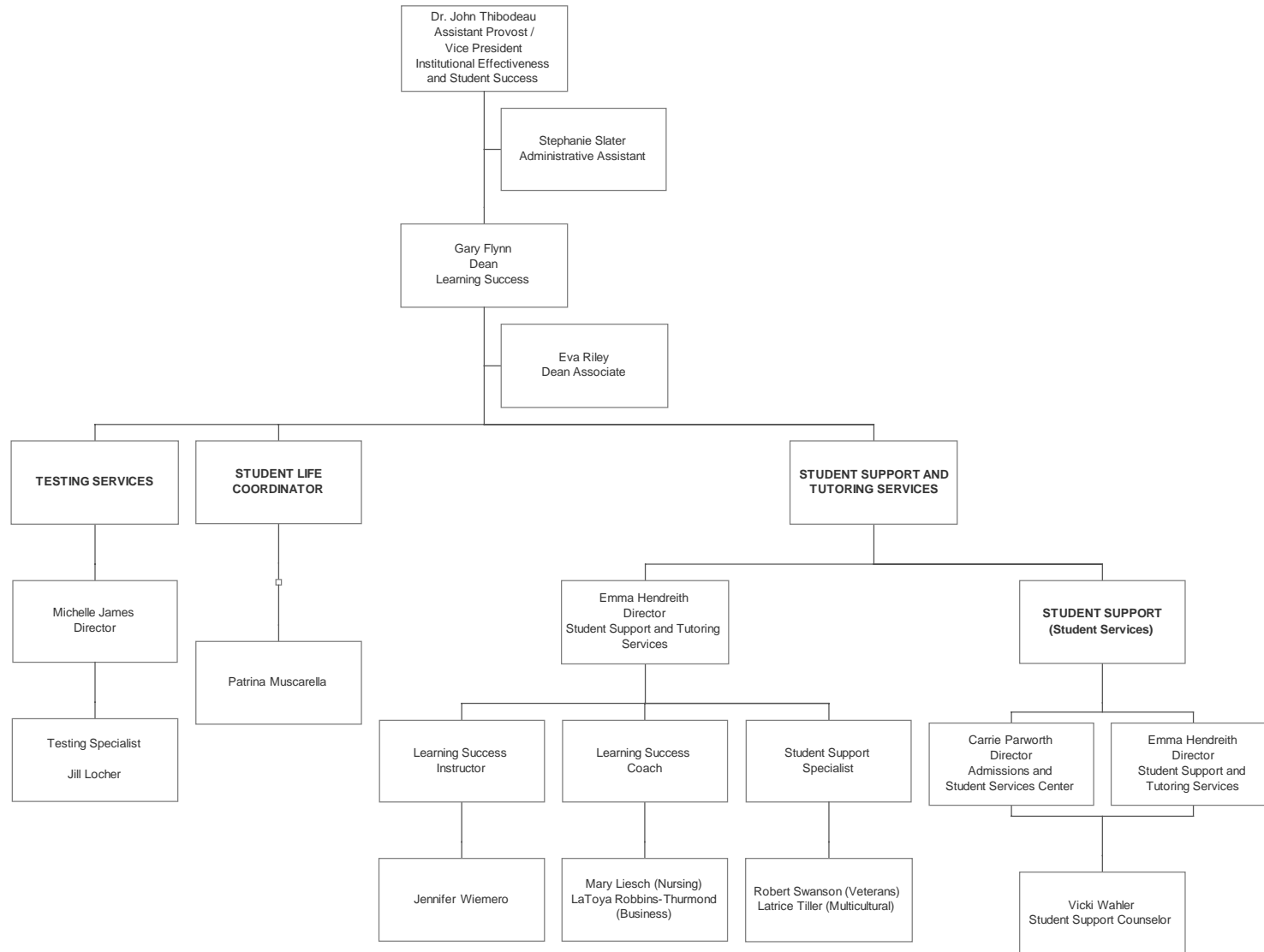
LEARNING INNOVATION



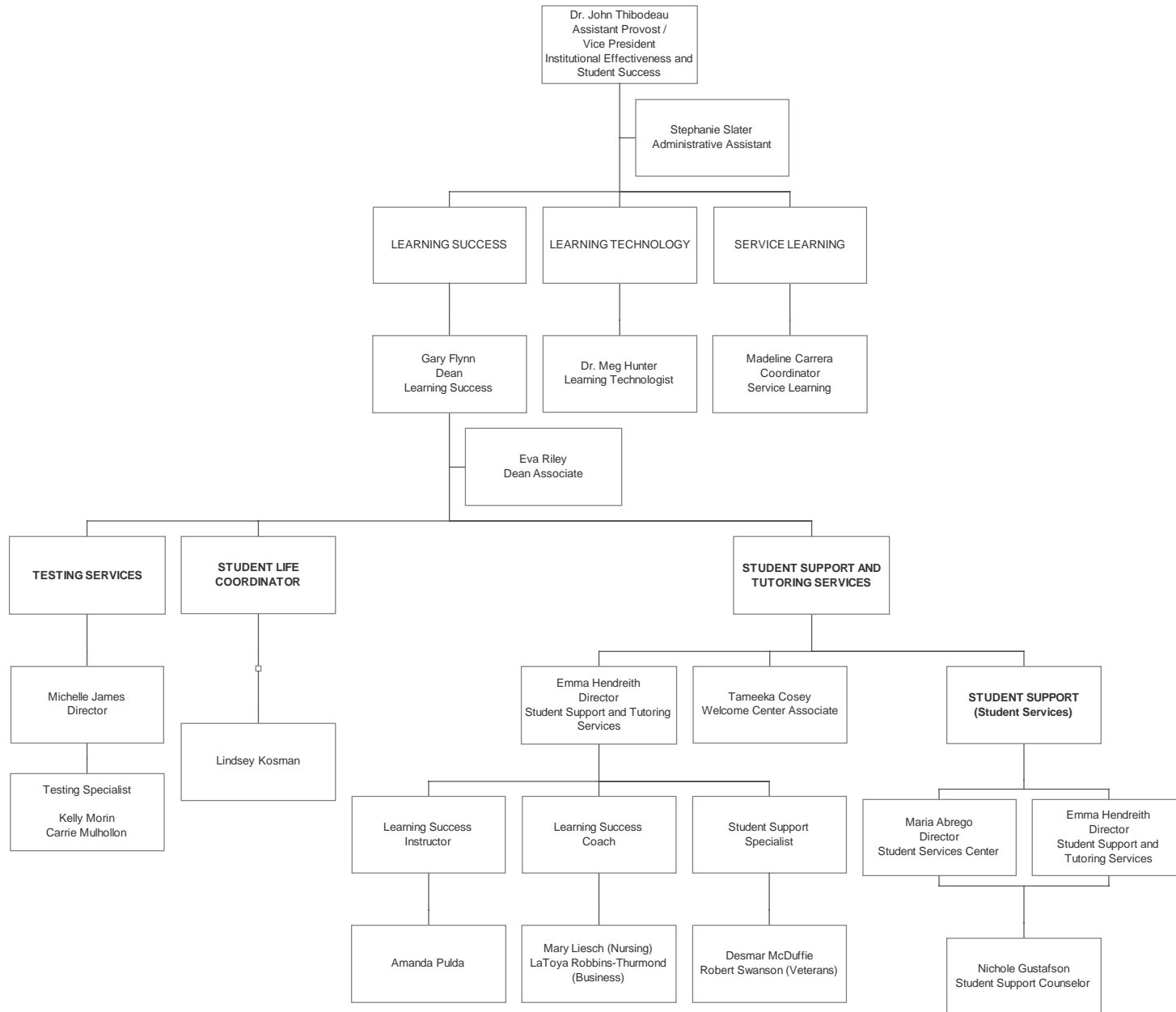
BUSINESS AND WORKFORCE SOLUTIONS



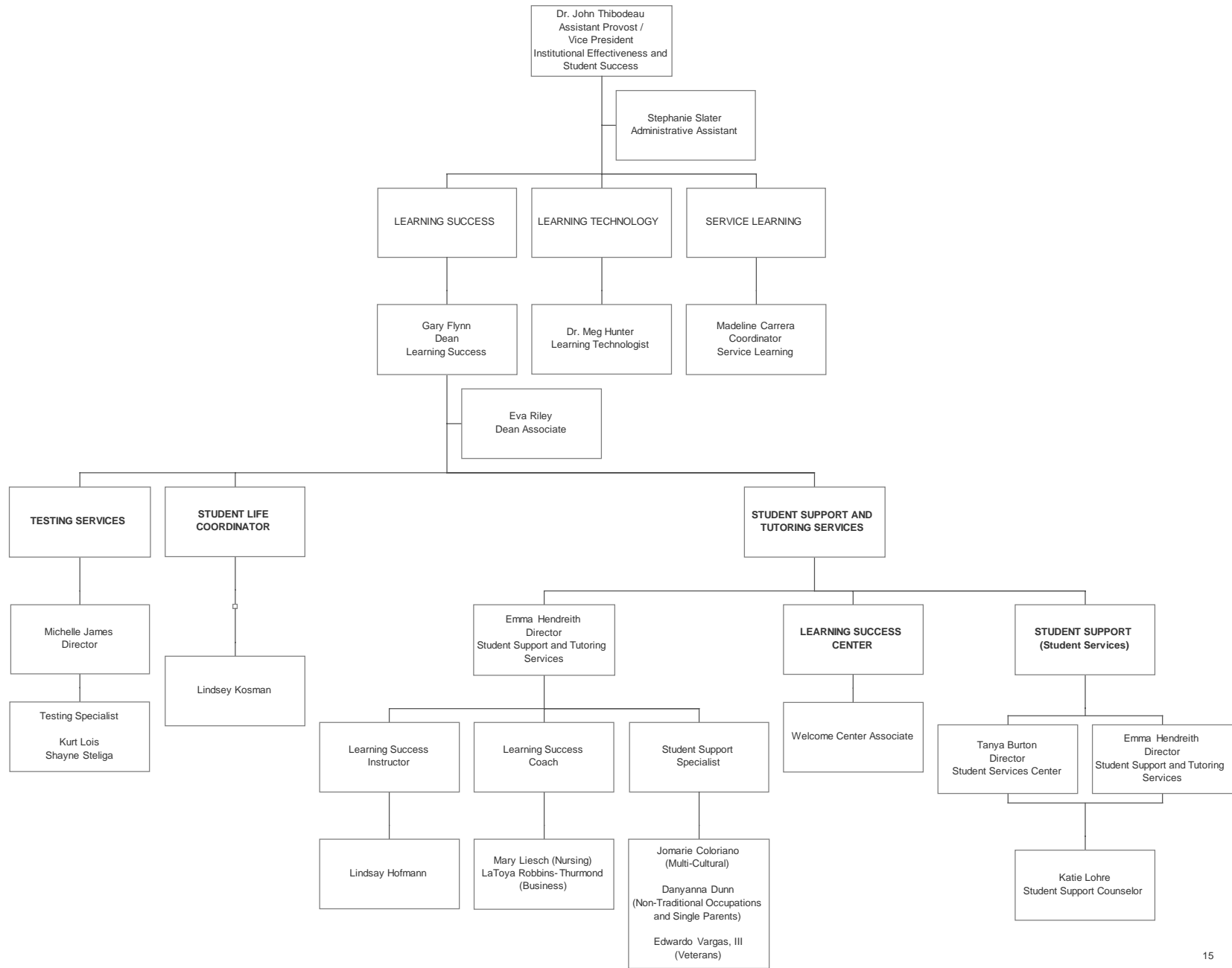
LEARNING SUCCESS - ELKHORN CAMPUS



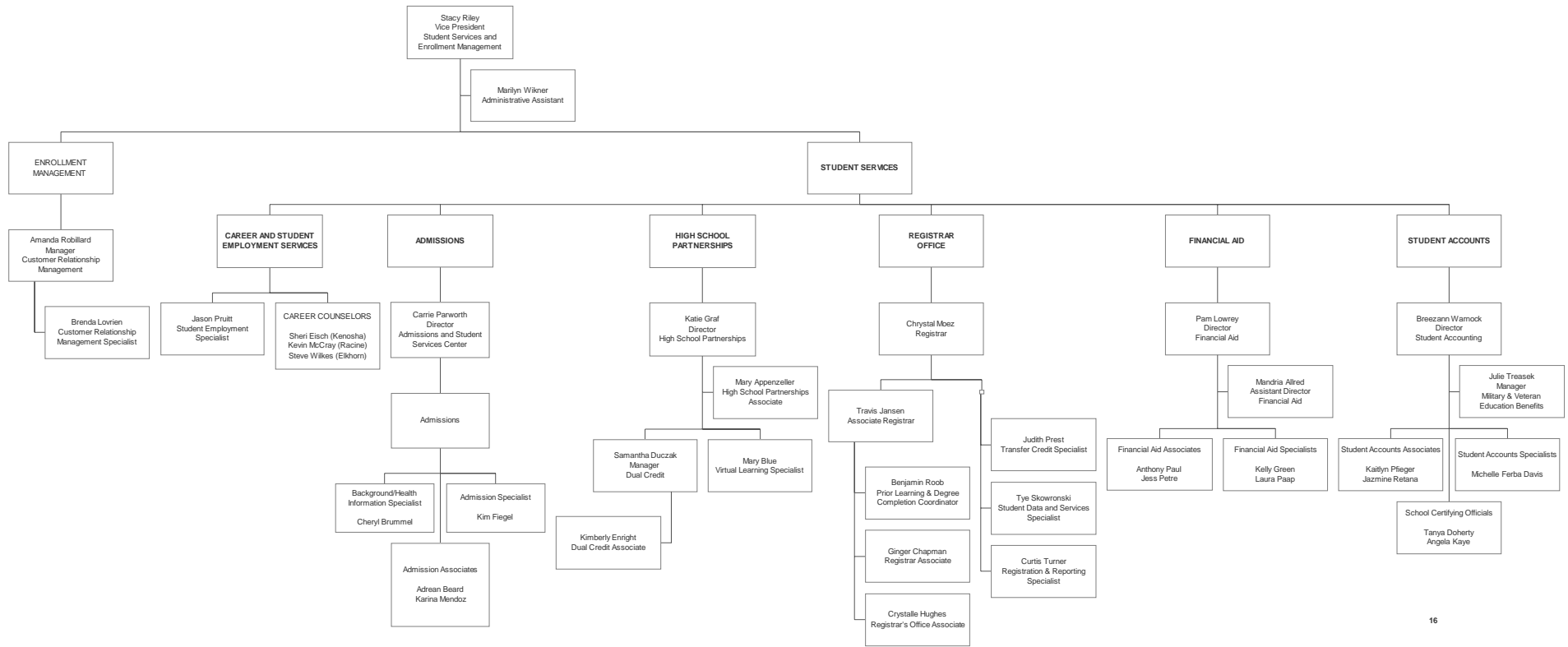
LEARNING SUCCESS - KENOSHA CAMPUS



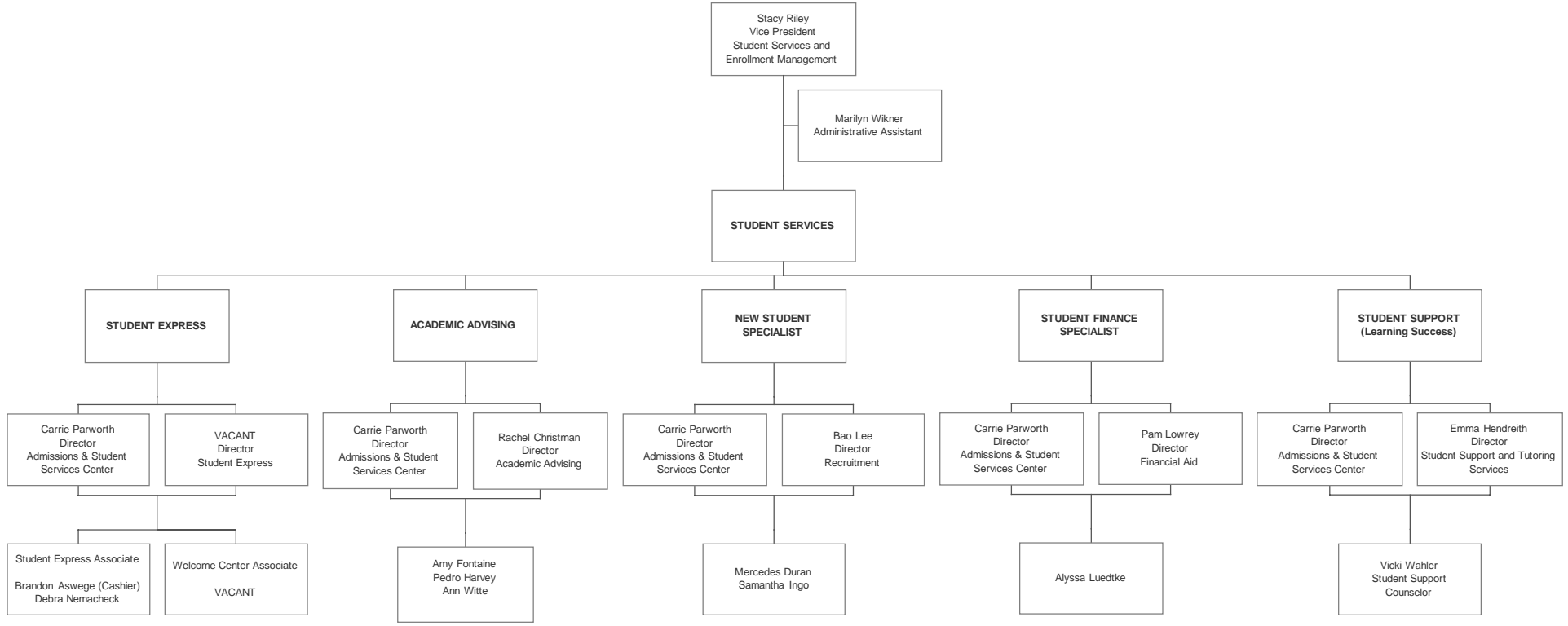
LEARNING SUCCESS - RACINE CAMPUS



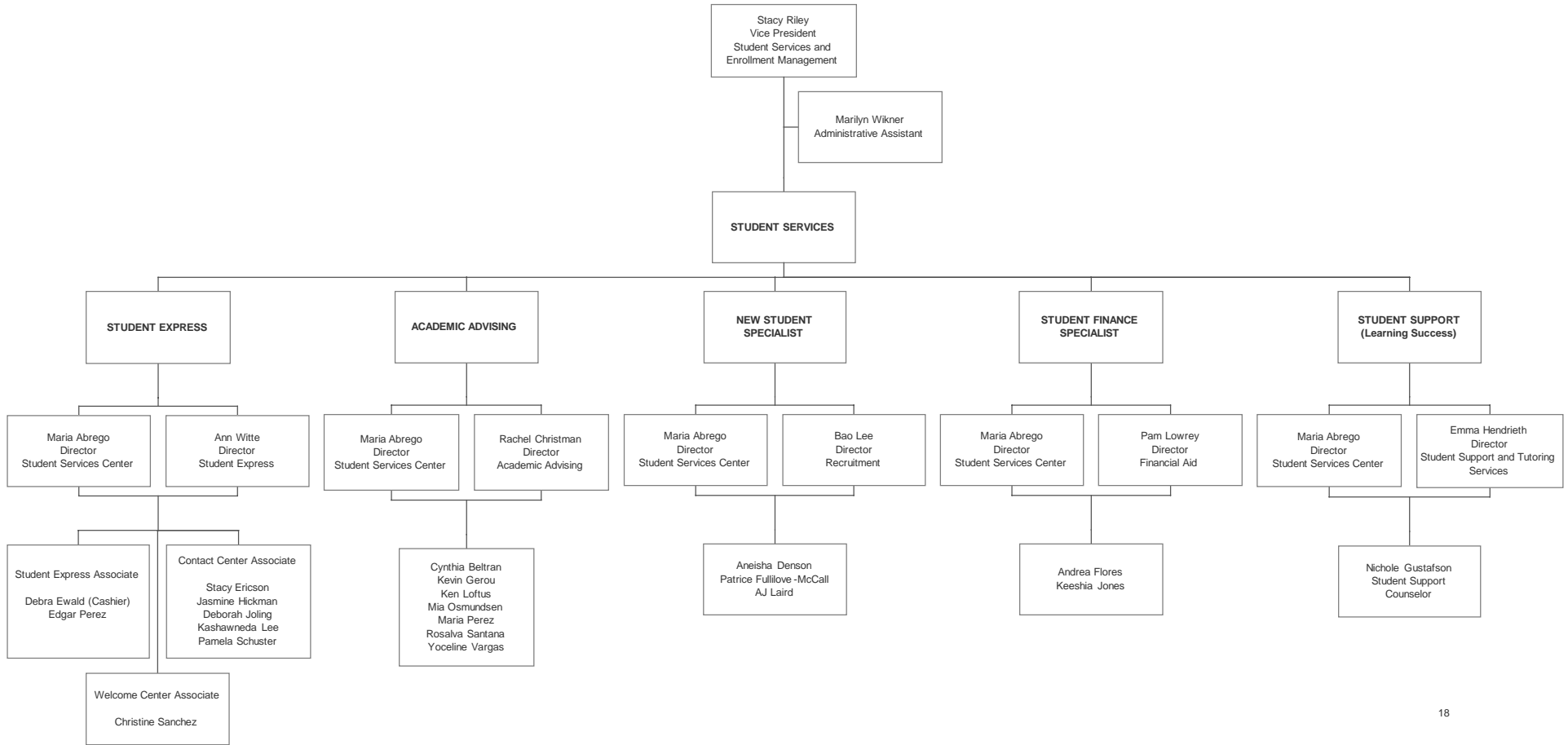
STUDENT SERVICES AND ENROLLMENT MANAGEMENT



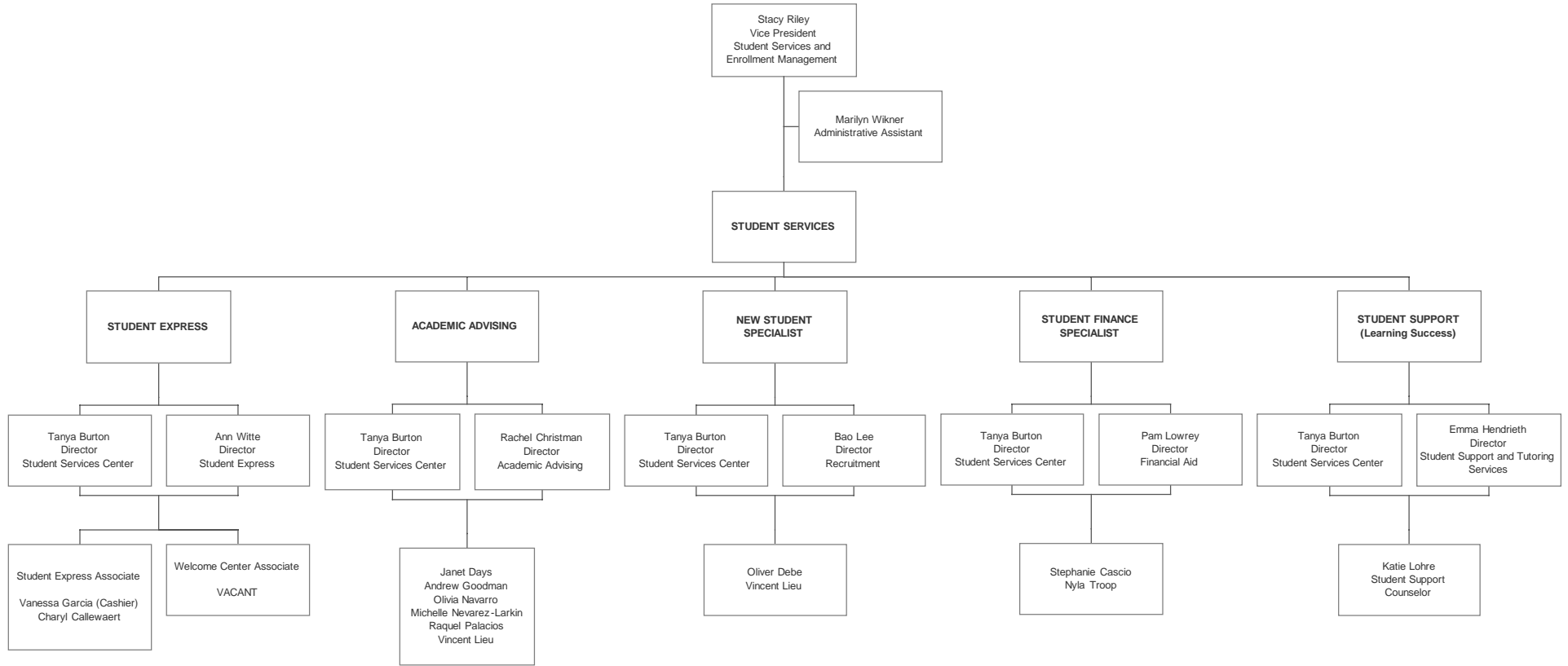
STUDENT SERVICES - ELKHORN



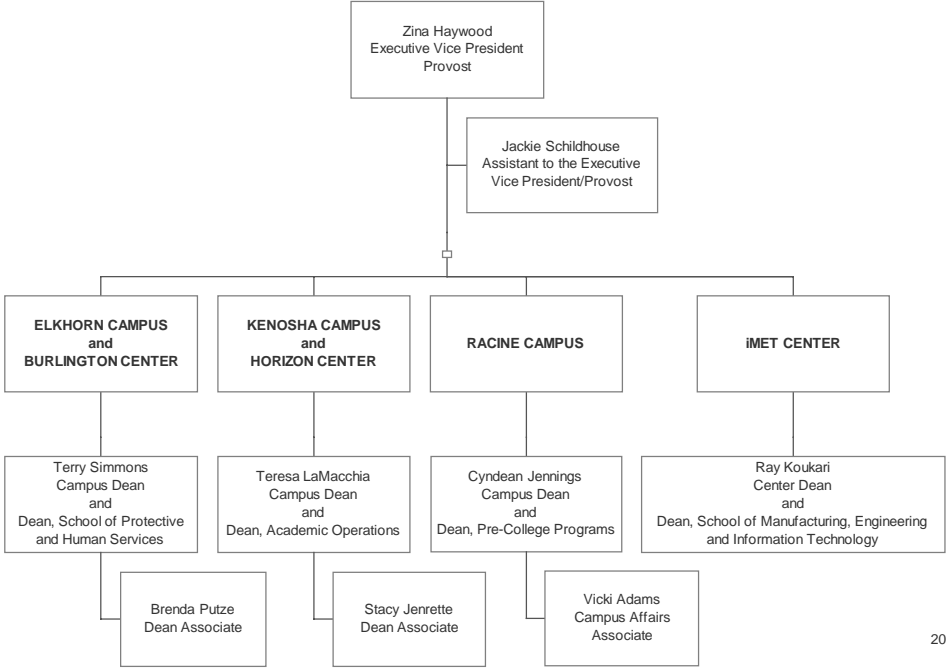
STUDENT SERVICES - KENOSHA



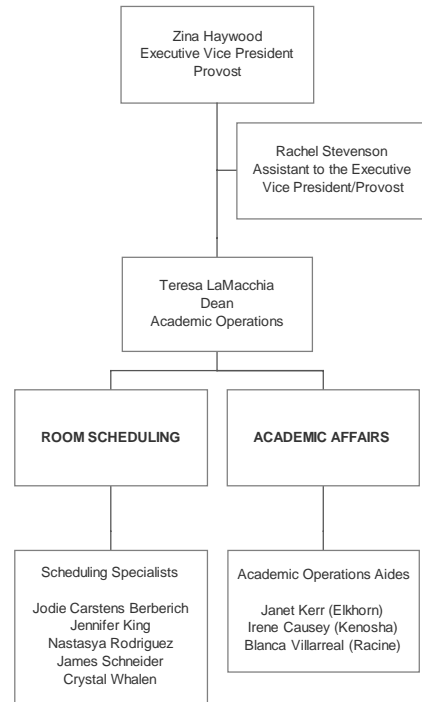
STUDENT SERVICES - RACINE



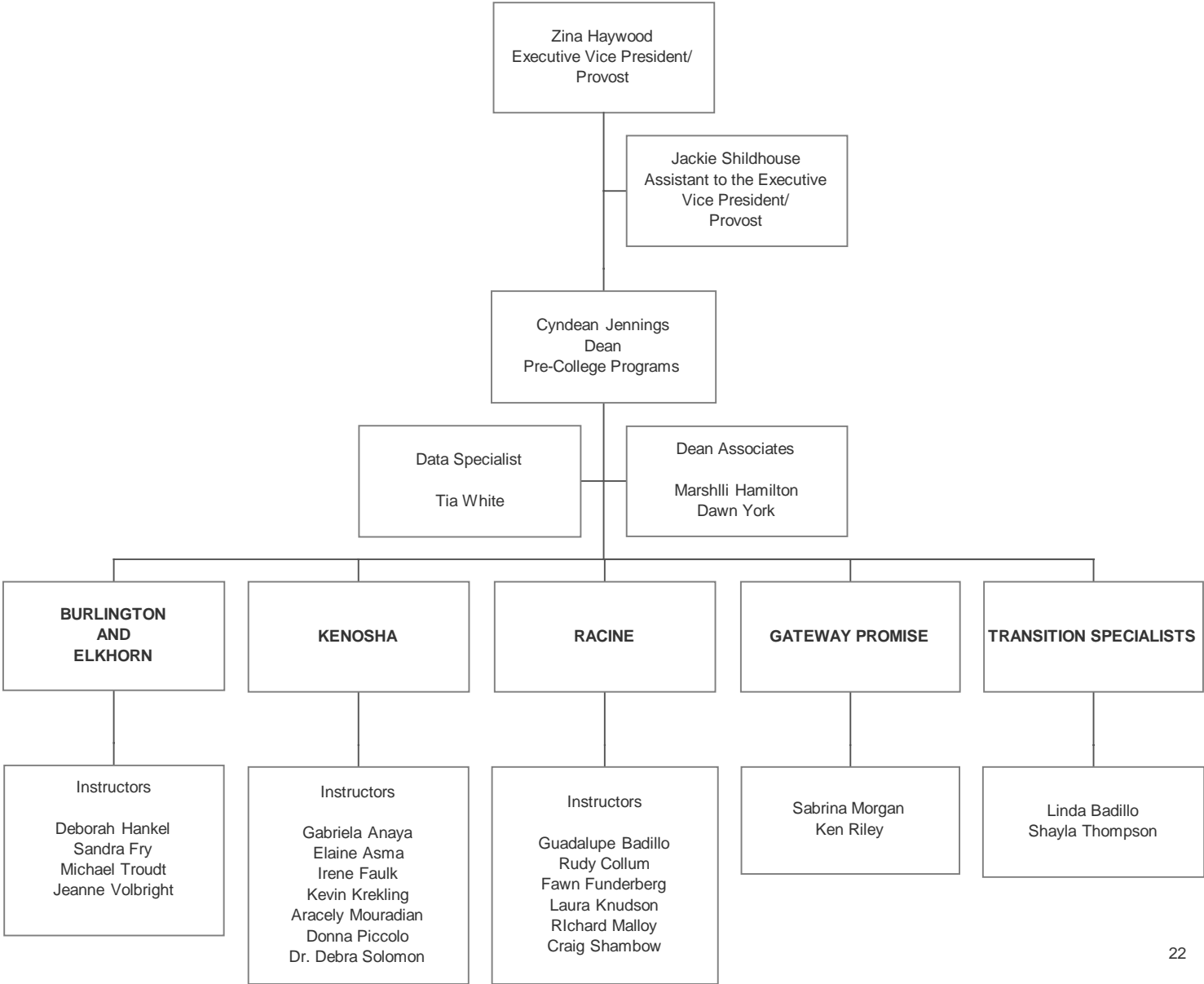
CAMPUS AFFAIRS



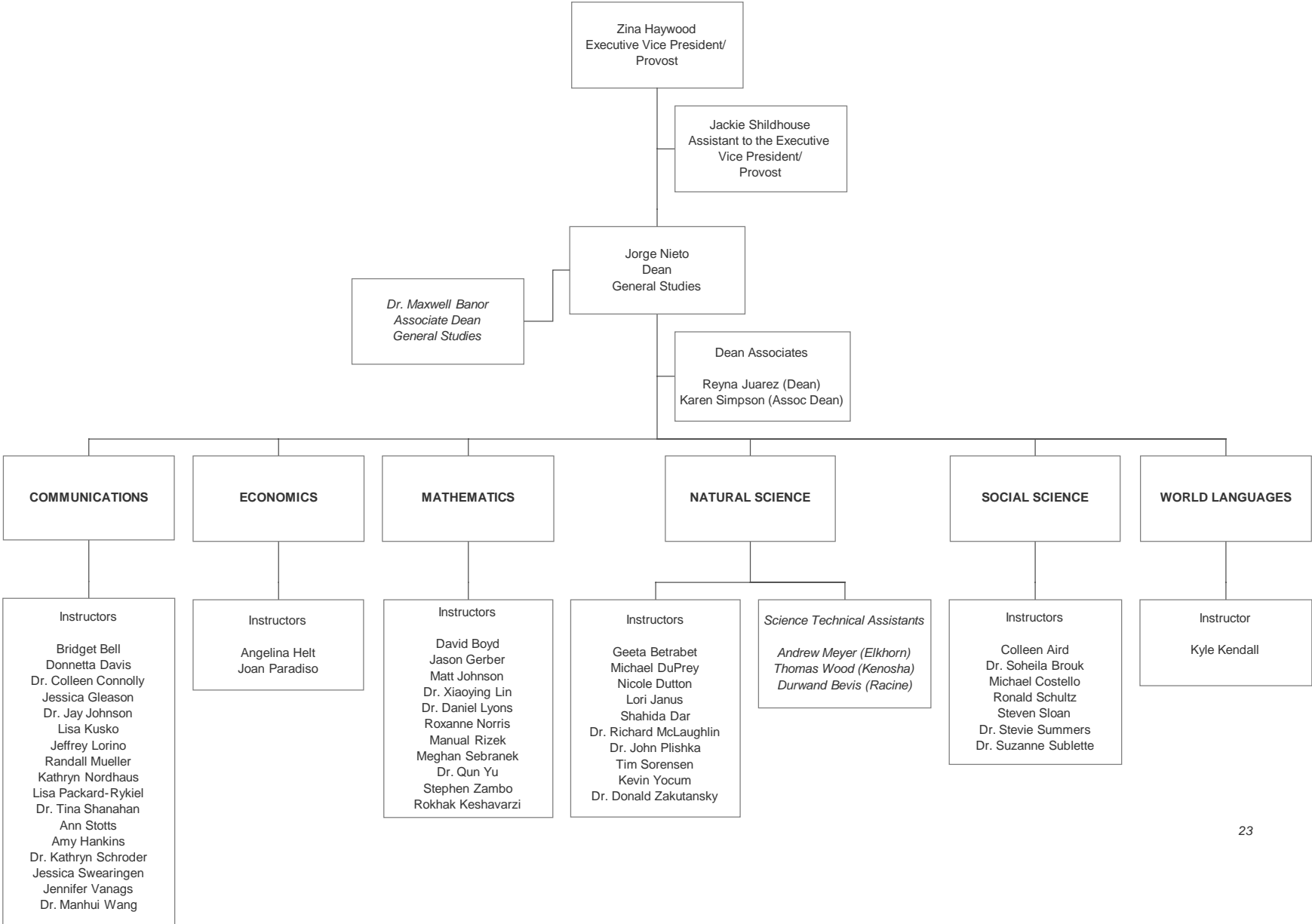
ACADEMIC OPERATIONS



PRE-COLLEGE PROGRAMS



GENERAL STUDIES



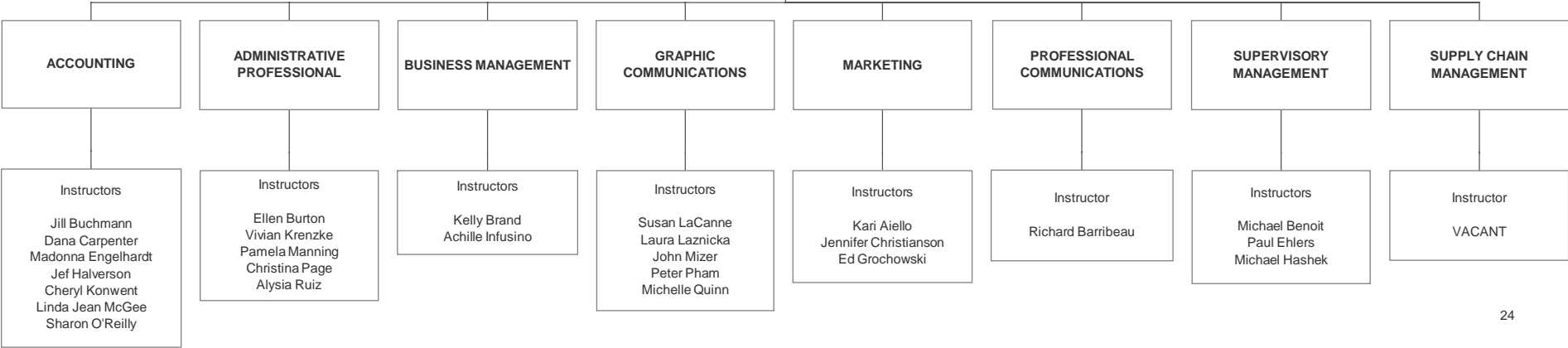
SCHOOL OF BUSINESS AND TRANSPORTATION

Zina Haywood
Executive Vice President/
Provost

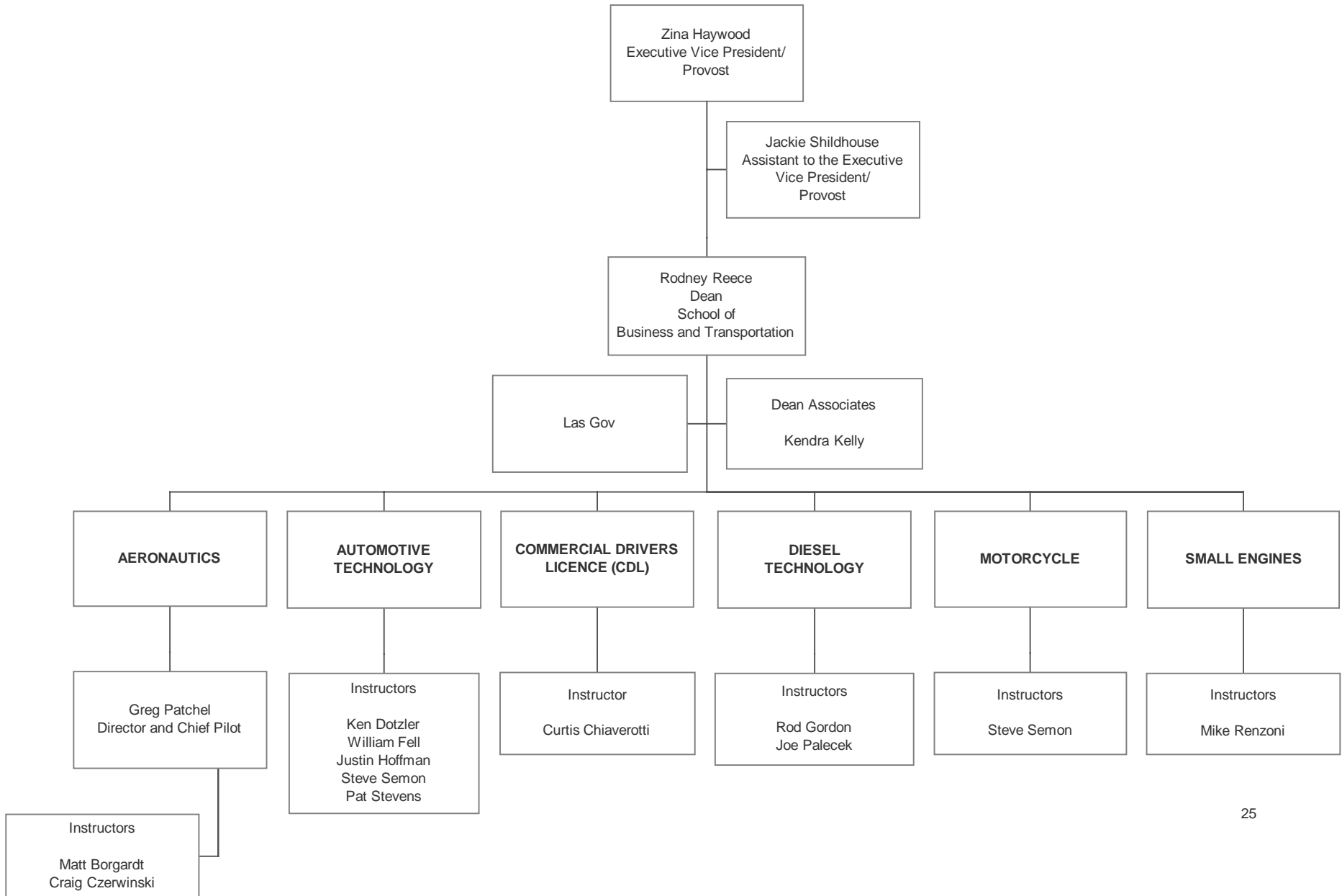
Kristen Paulson
Assistant to the Executive
Vice President/
Provost

Rodney Reece
Dean
School of
Business and Transportation

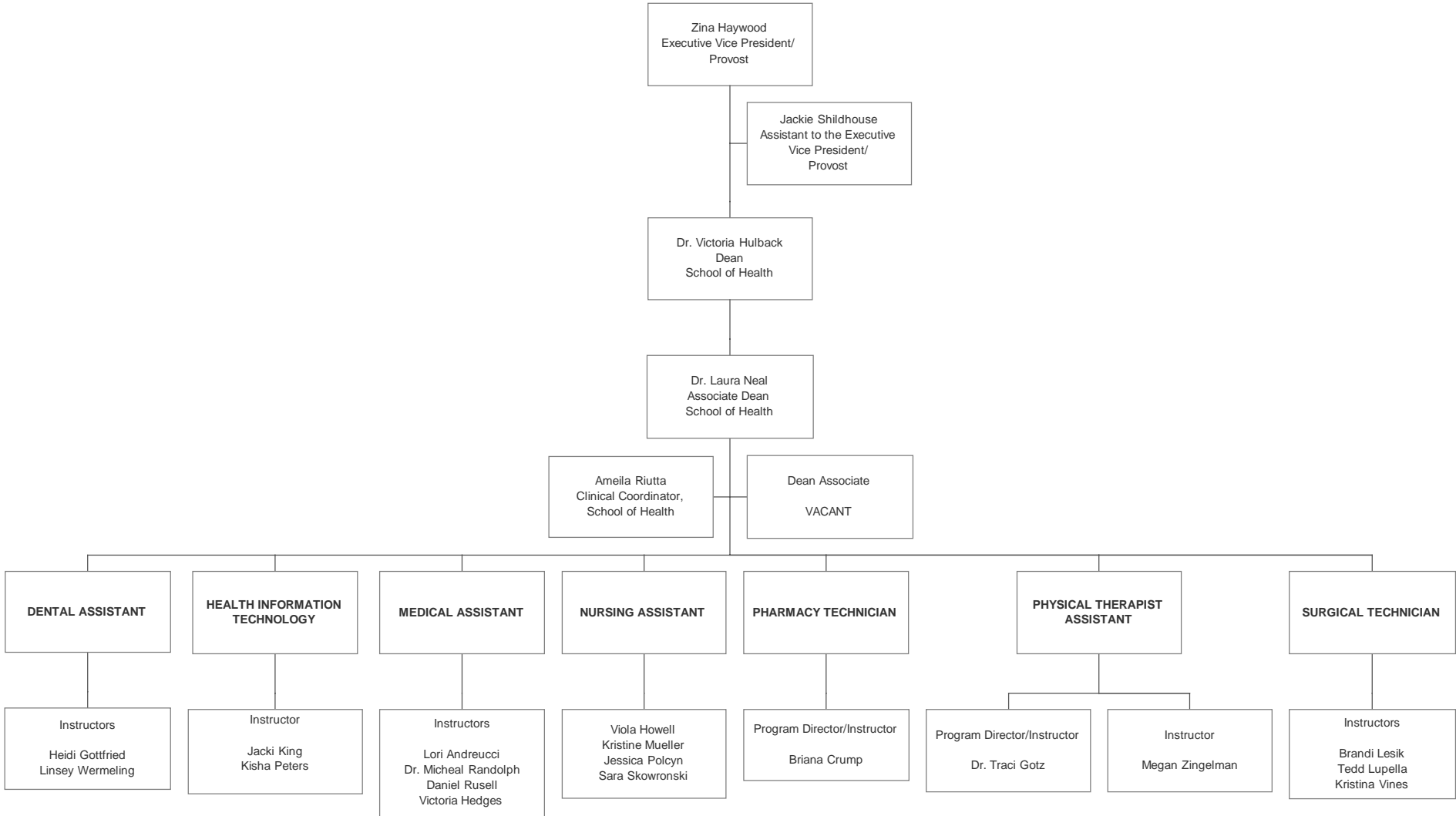
Dean Associates
Sherry Bubel



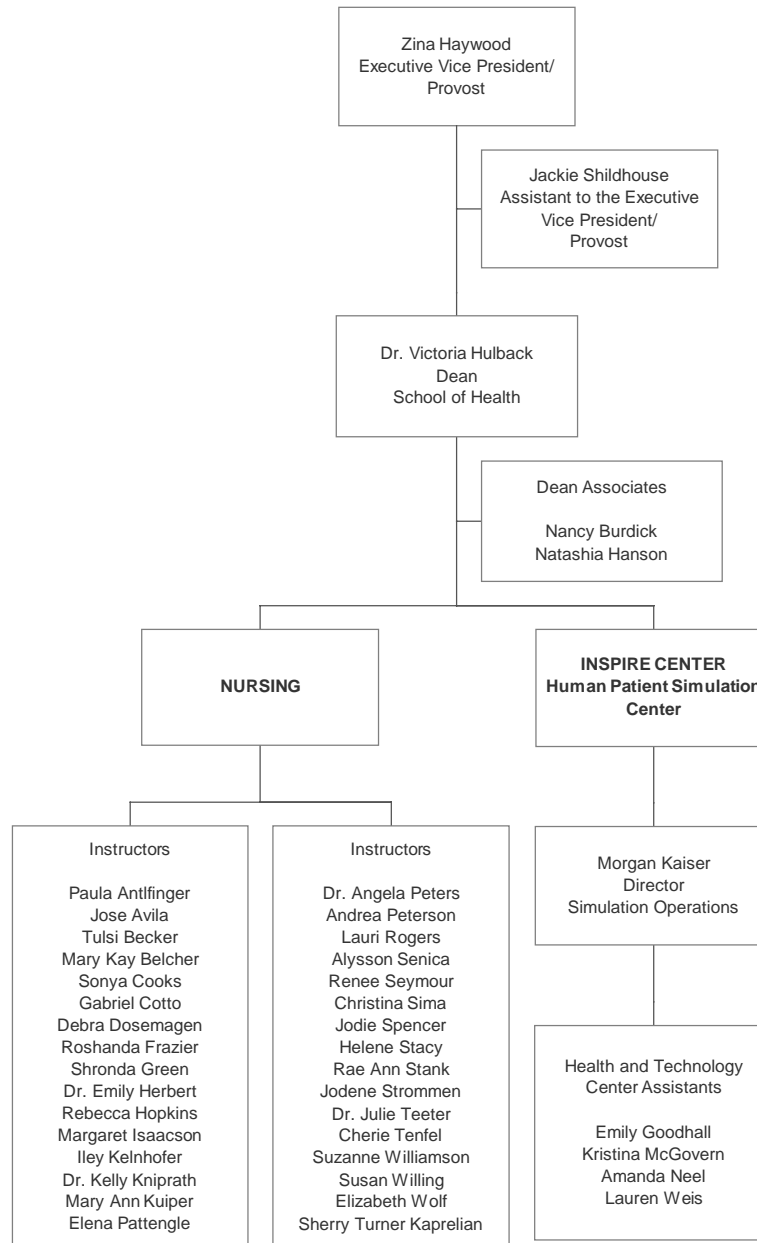
SCHOOL OF BUSINESS AND TRANSPORTATION



SCHOOL OF HEALTH



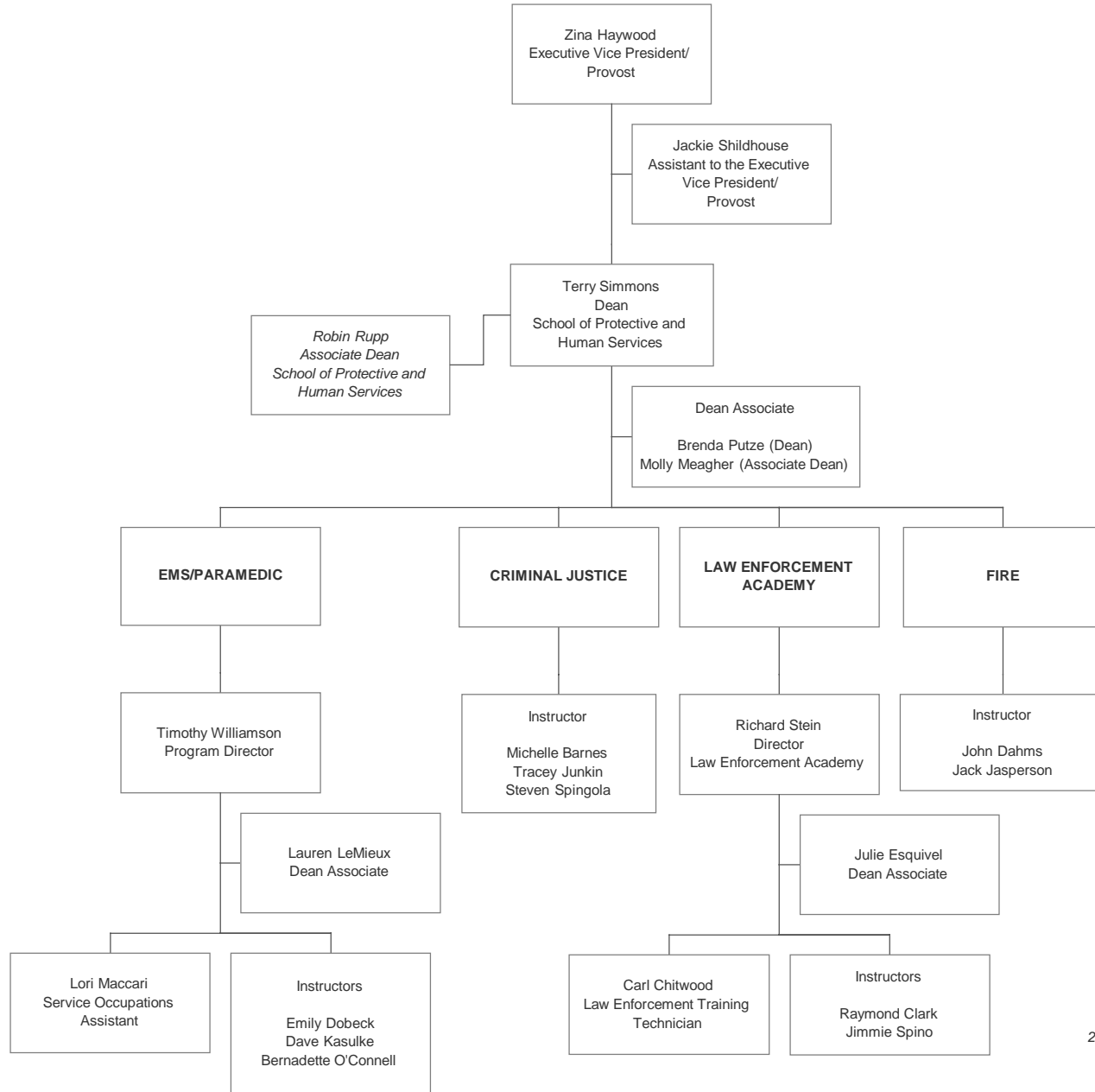
SCHOOL OF HEALTH - NURSING



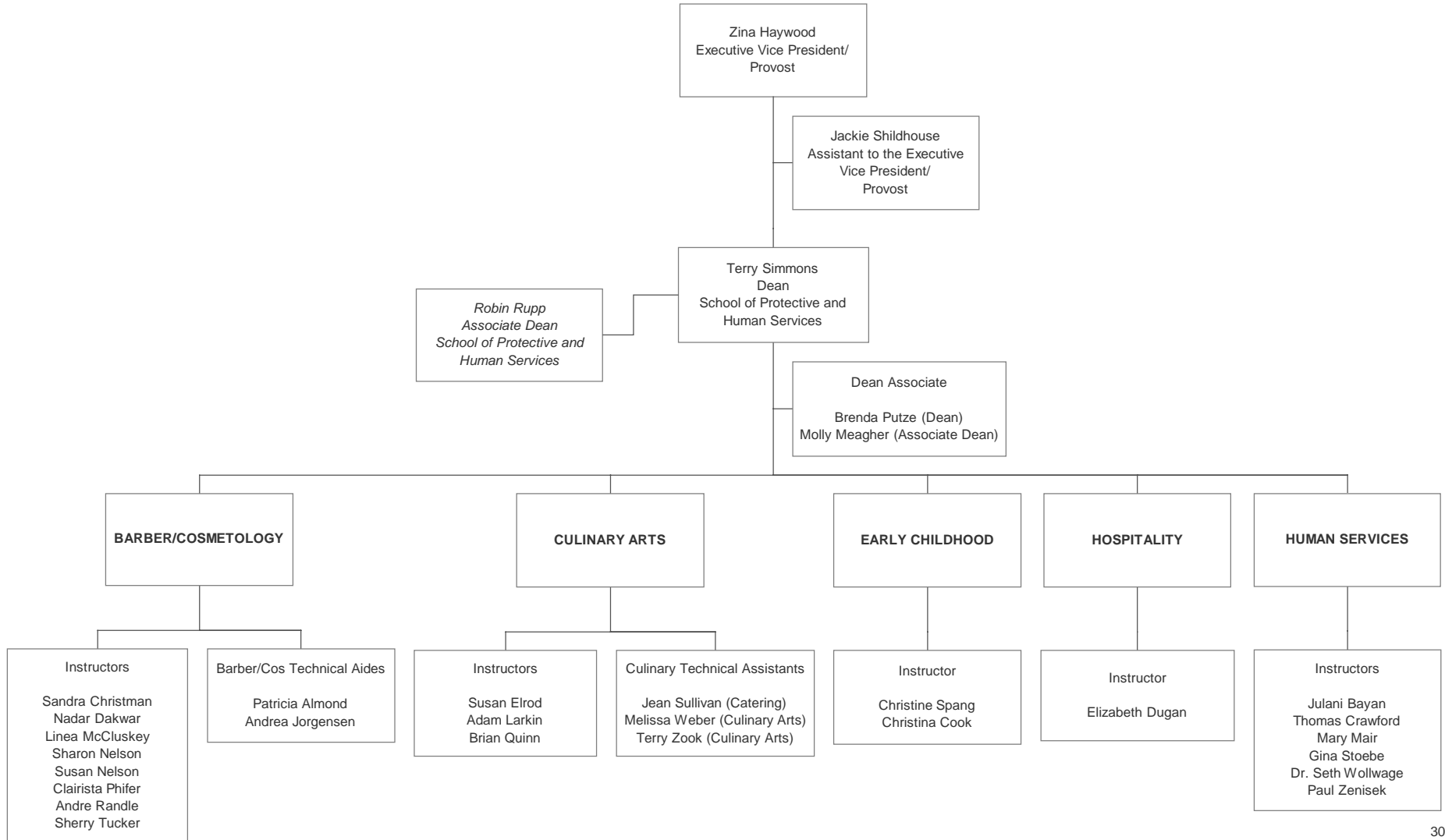
SCHOOL OF MANUFACTURING, ENGINEERING AND INFORMATION TECHNOLOGY



SCHOOL OF PROTECTIVE AND HUMAN SERVICES



SCHOOL OF PROTECTIVE AND HUMAN SERVICES



SCHOOL OF PROTECTIVE AND HUMAN SERVICES

