

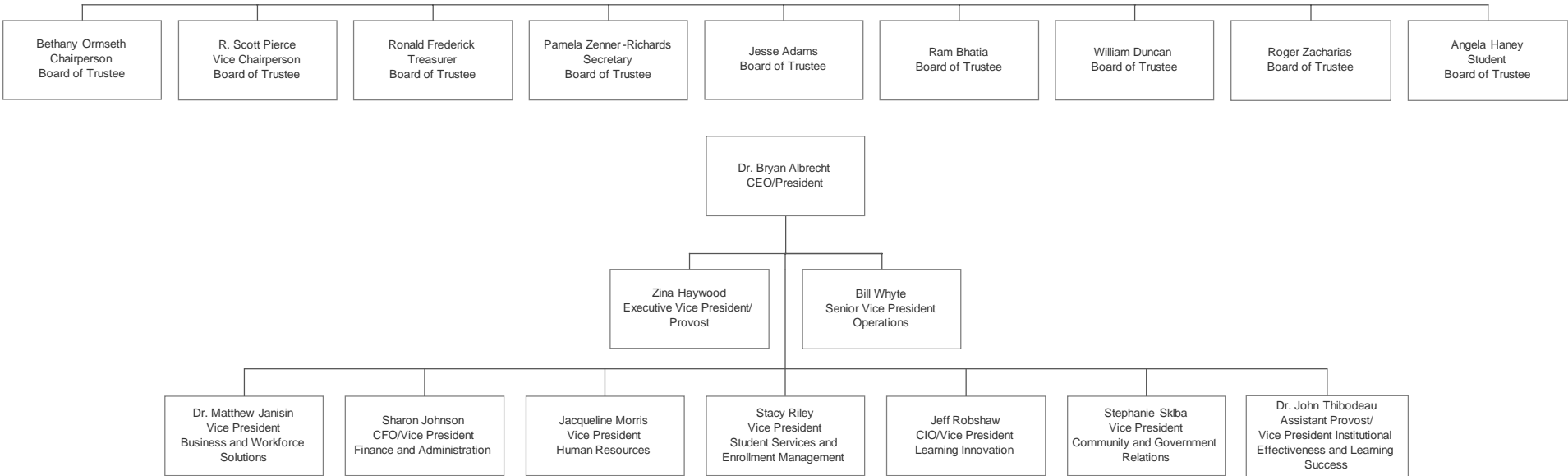
# **GATEWAY TECHNICAL COLLEGE ORGANIZATIONAL CHART**

**April 2020**

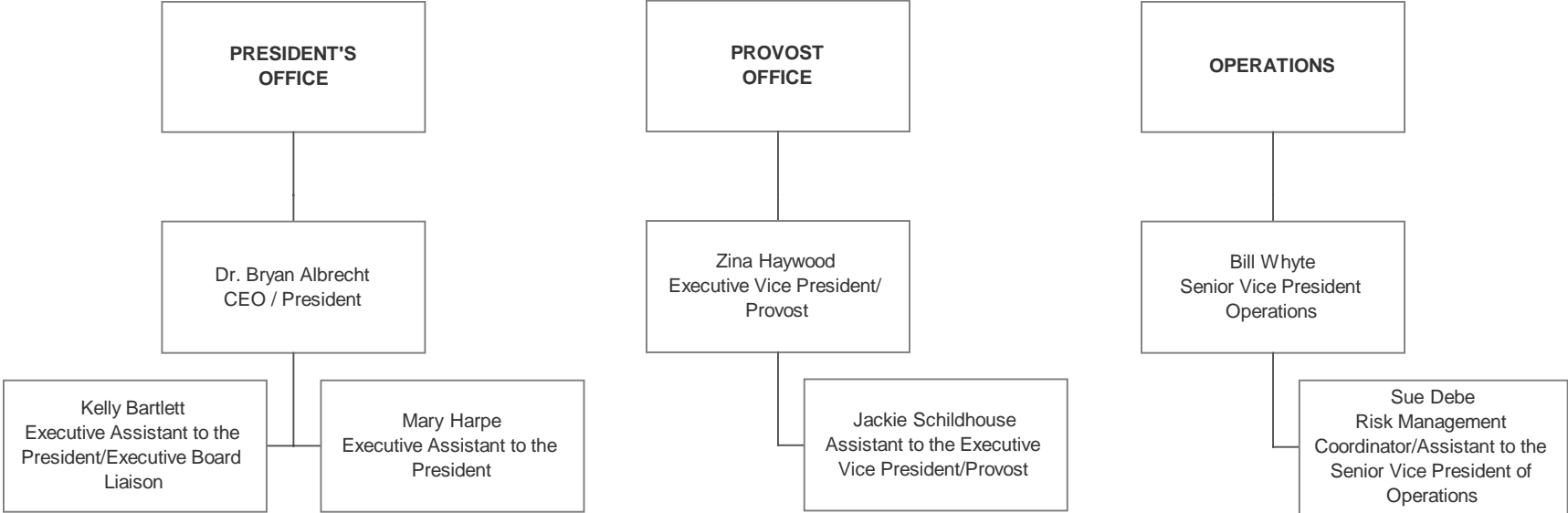
## TABLE OF CONTENTS

Academic Operations	21
Campus Affairs	20
Board of Trustees and Executive Leadership Committee	3
Business Office	5
Business and Workforce Solutions	12
Community and Government Relations	6
Enrollment Management	16
Executive Leadership	4
Facilities and Security	7
Financial Aid	16
Foundation	6
General Studies Division	23
Human Resources	8
Institutional Effectiveness	9
Learning Innovation	11
Learning Success	13 - 15
Library	10
Marketing	6
Operations	4
Pre-College Programs	22
President's Office	4
Provost Office	4
Registrar Office	16
School of Business and Transportation	24-25
School of Health	26-27
School of Manufacturing, Engineering and Informational Technology	28
School of Protective and Human Services	29-31
Student Services	16 - 19
WGTD - Radio Station	6

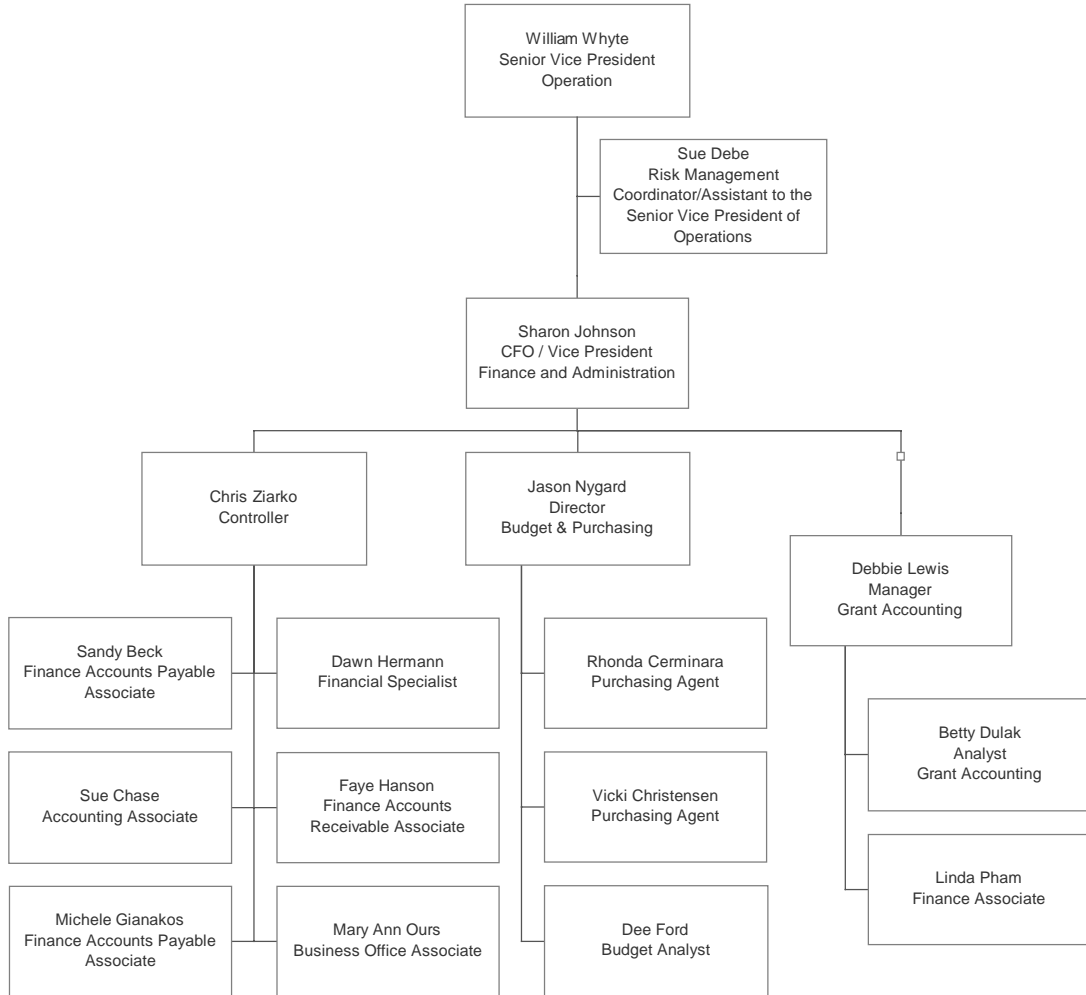
**BOARD OF TRUSTEES  
AND  
EXECUTIVE LEADERSHIP COMMITTEE**



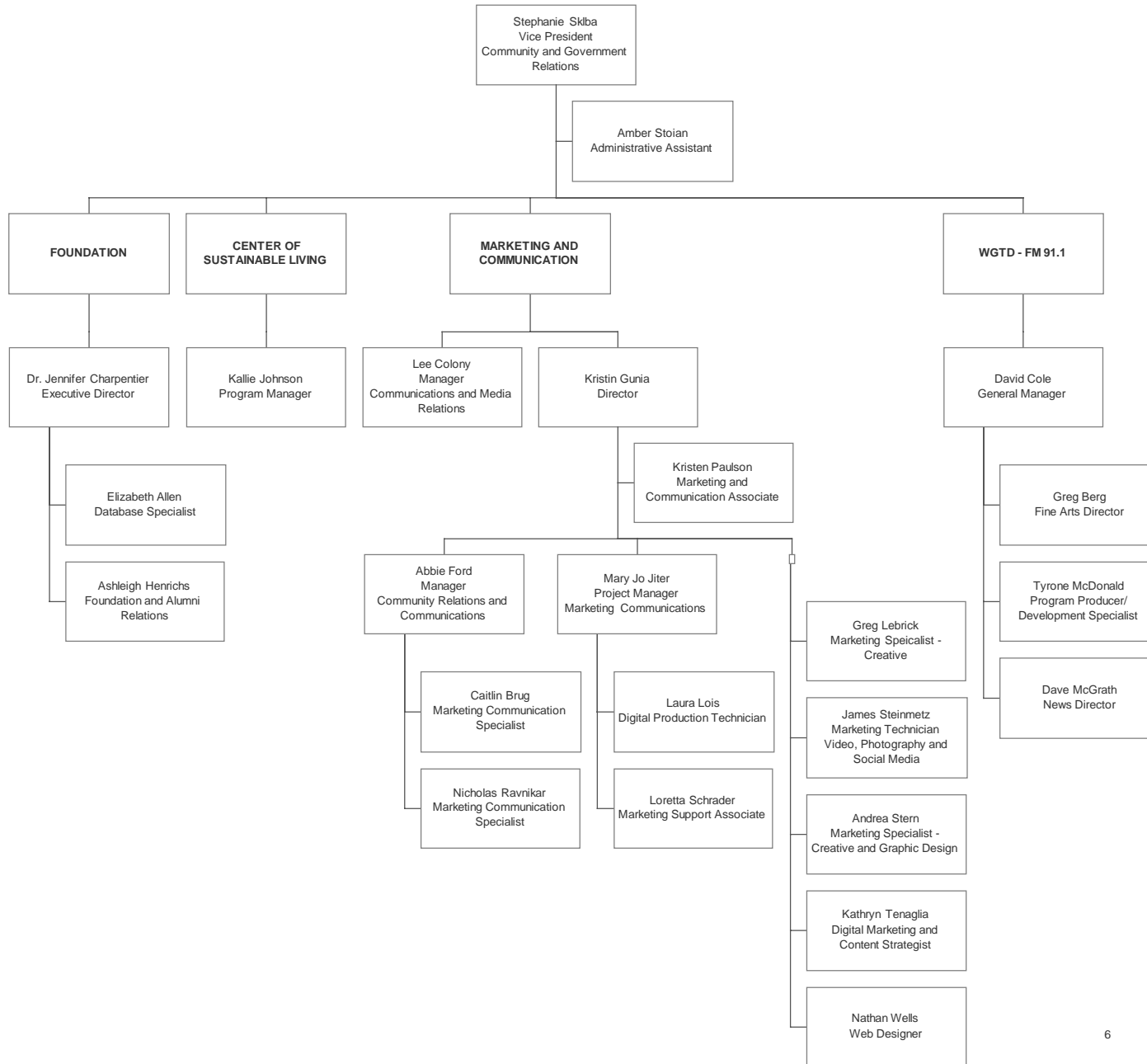
# EXECUTIVE LEADERSHIP



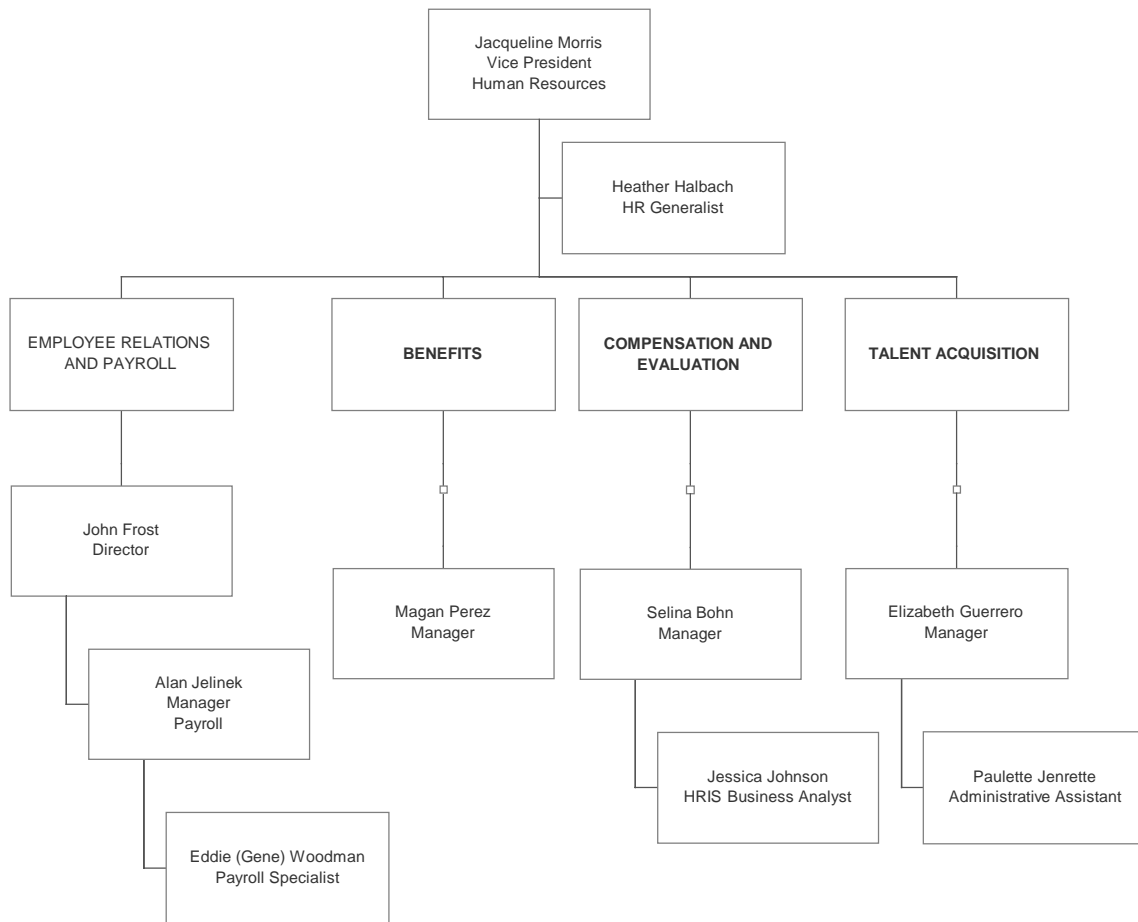
# BUSINESS OFFICE



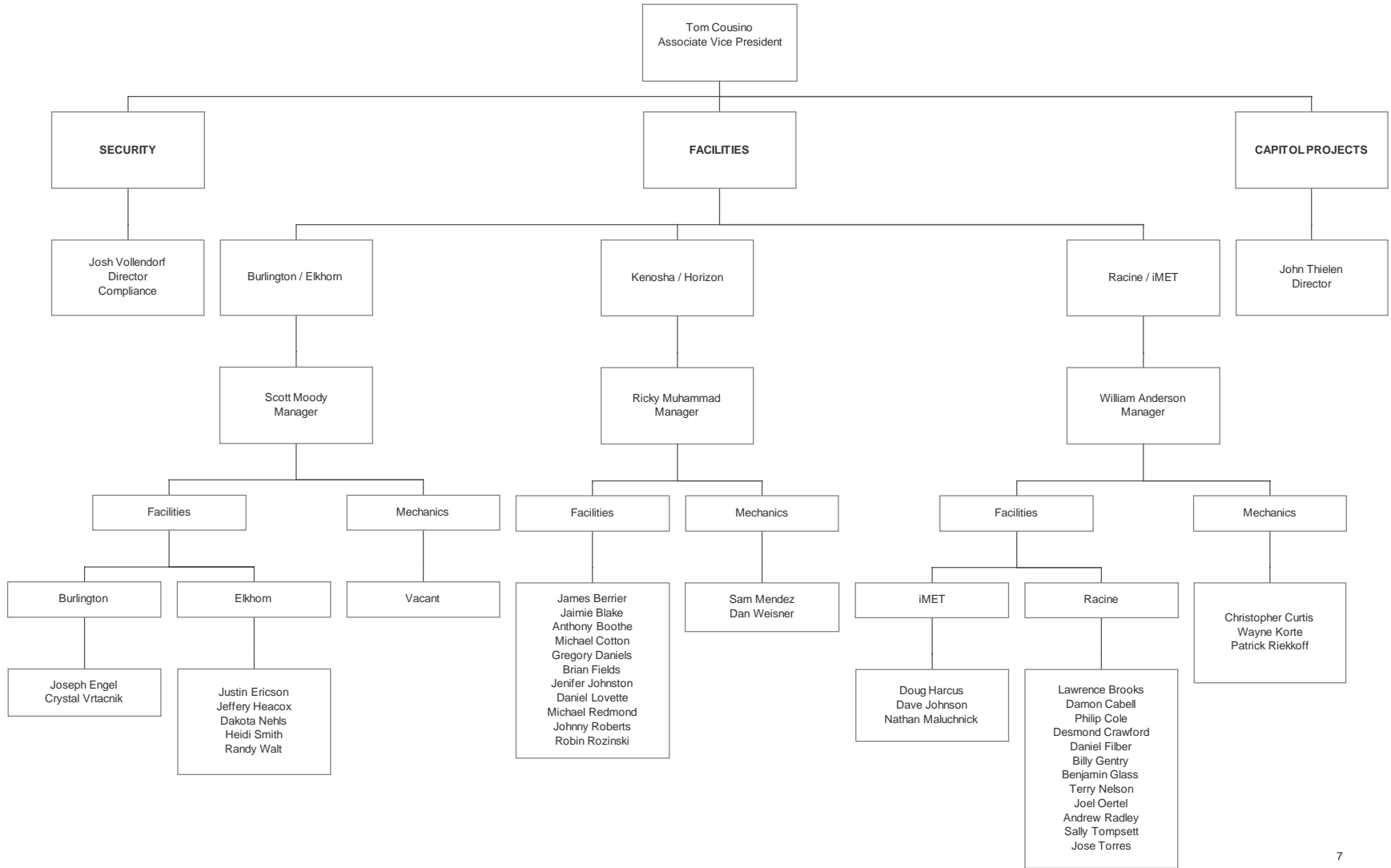
# COMMUNITY AND GOVERNMENT RELATIONS



# HUMAN RESOURCES

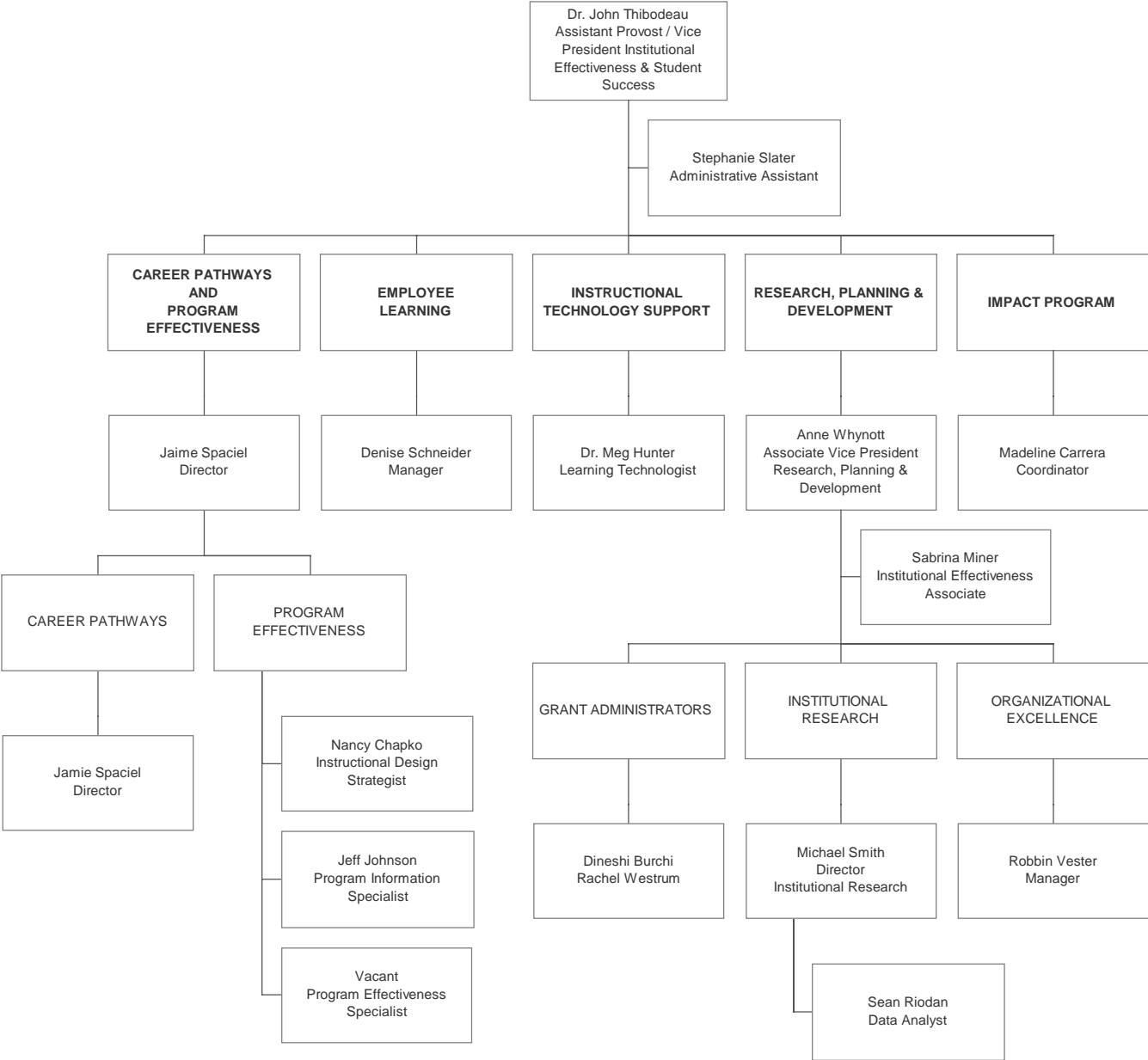


# FACILITIES AND SECURITY

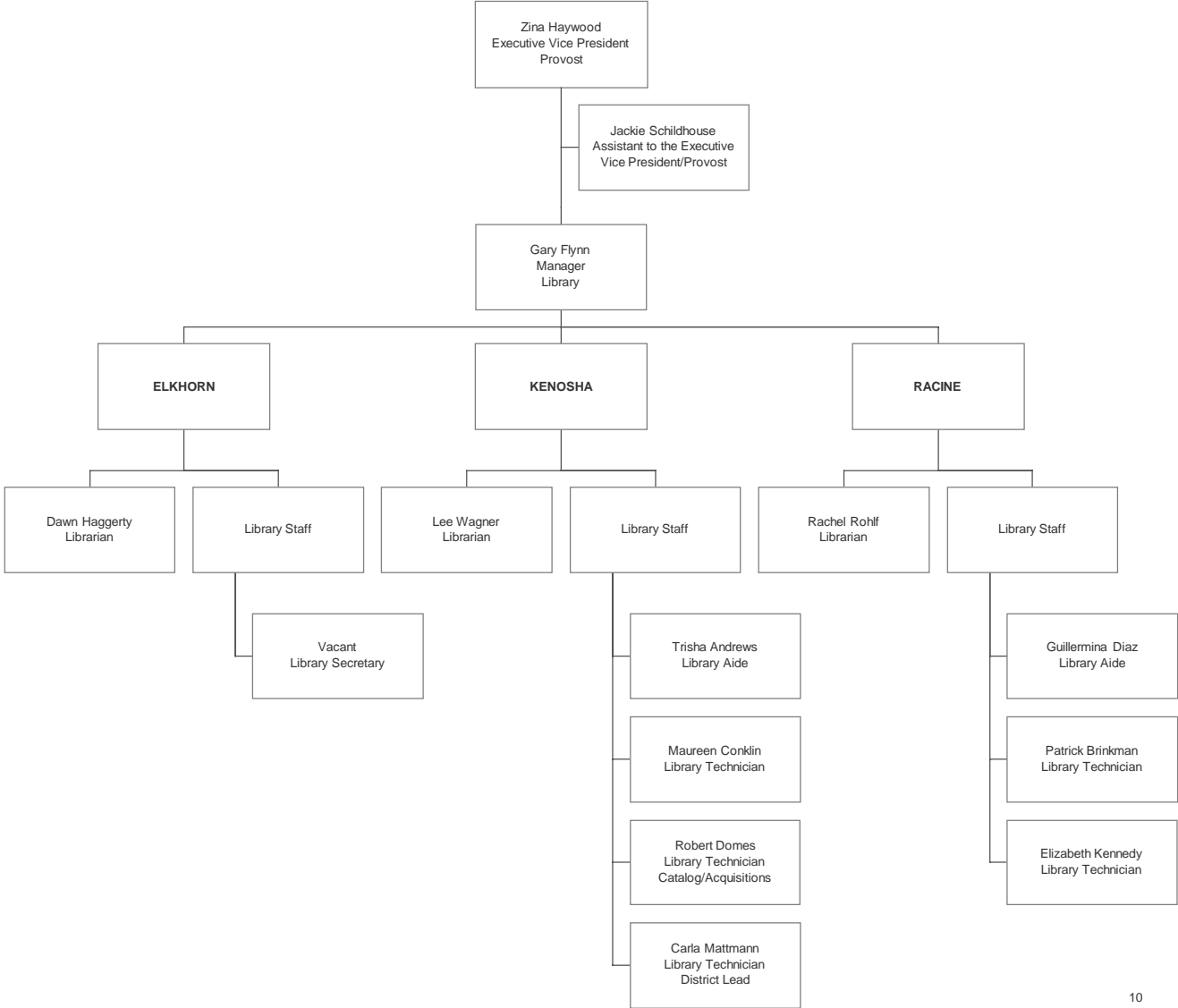




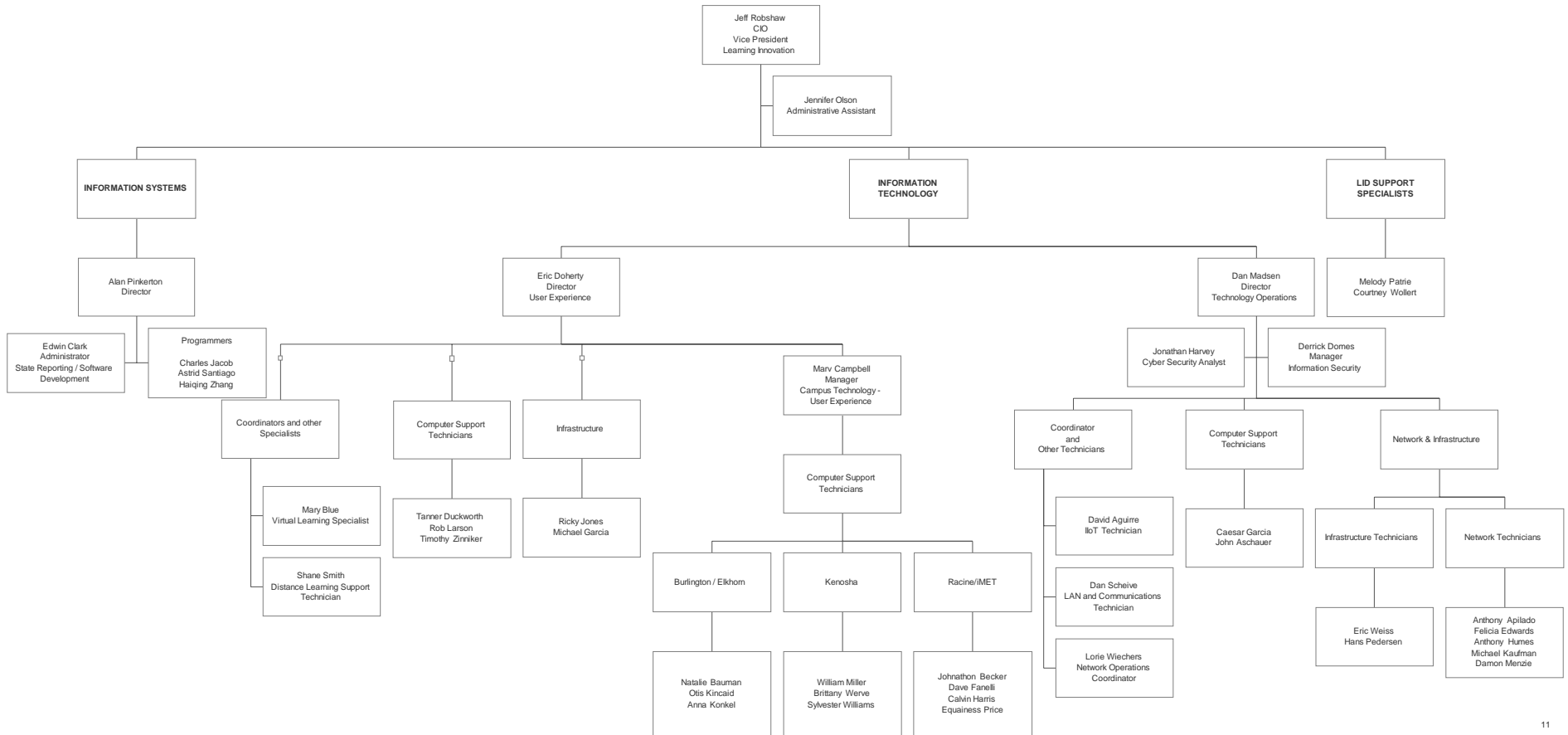
# INSTITUTIONAL EFFECTIVENESS



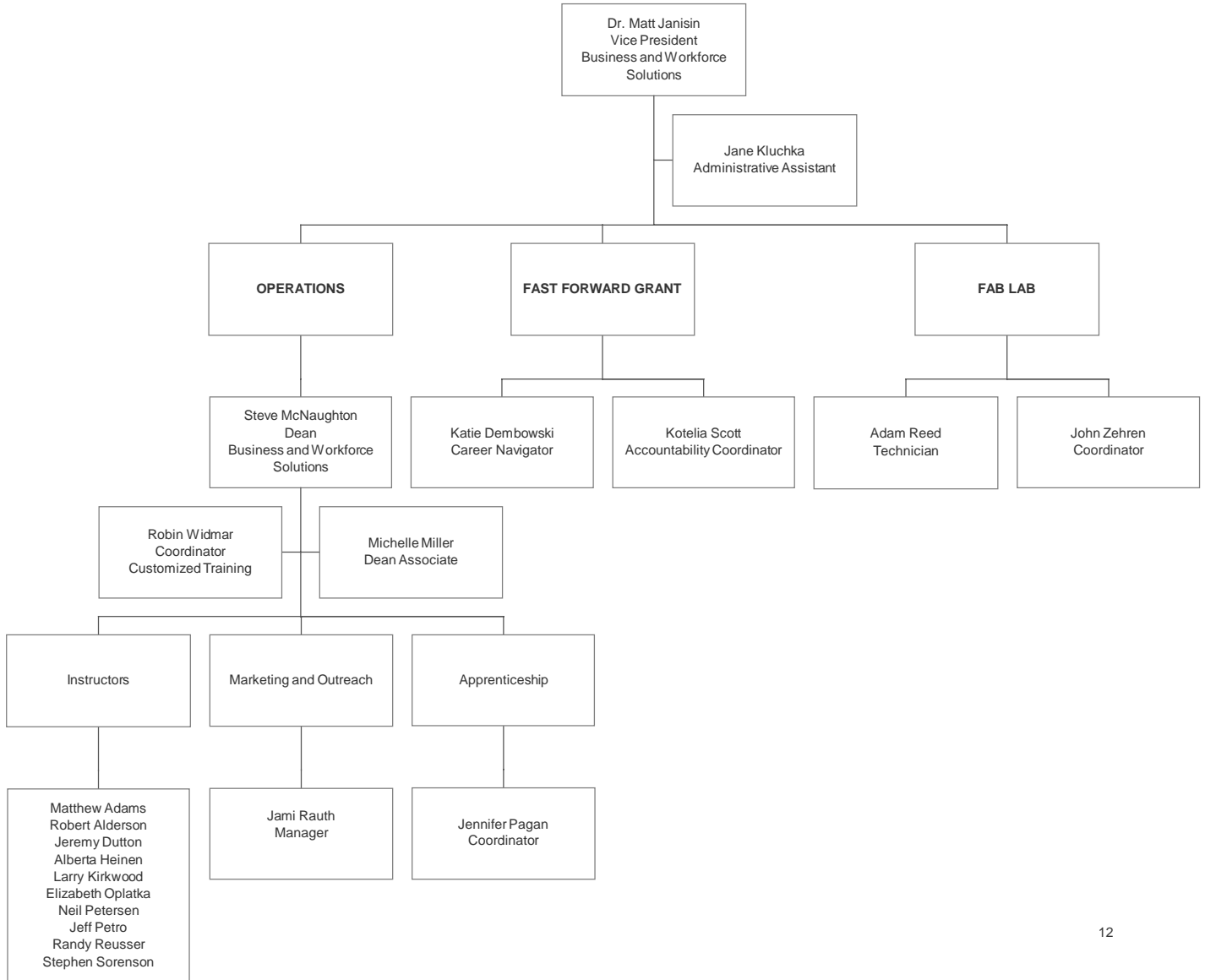
**LIBRARY**



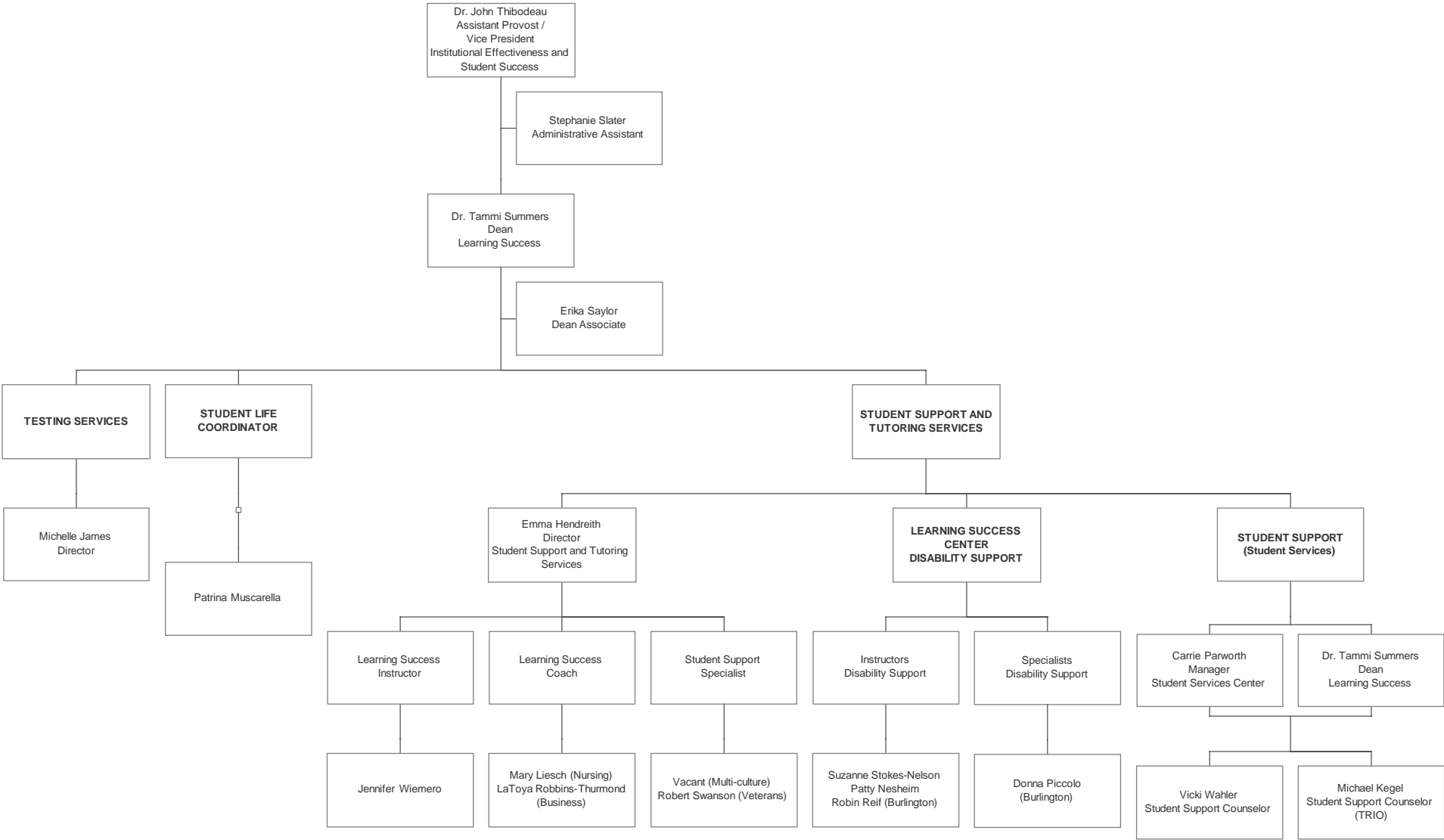
# LEARNING INNOVATION



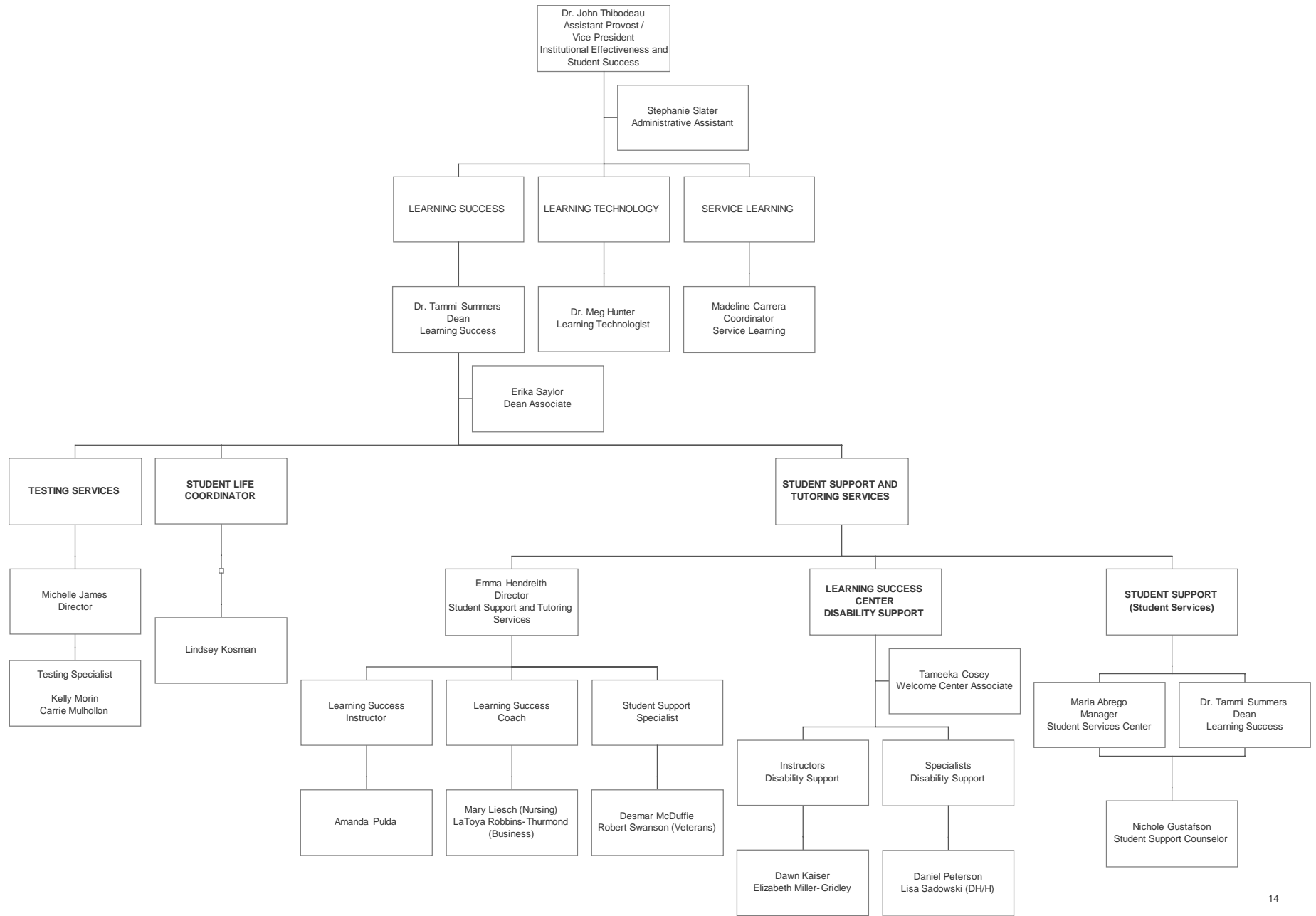
# BUSINESS AND WORKFORCE SOLUTIONS



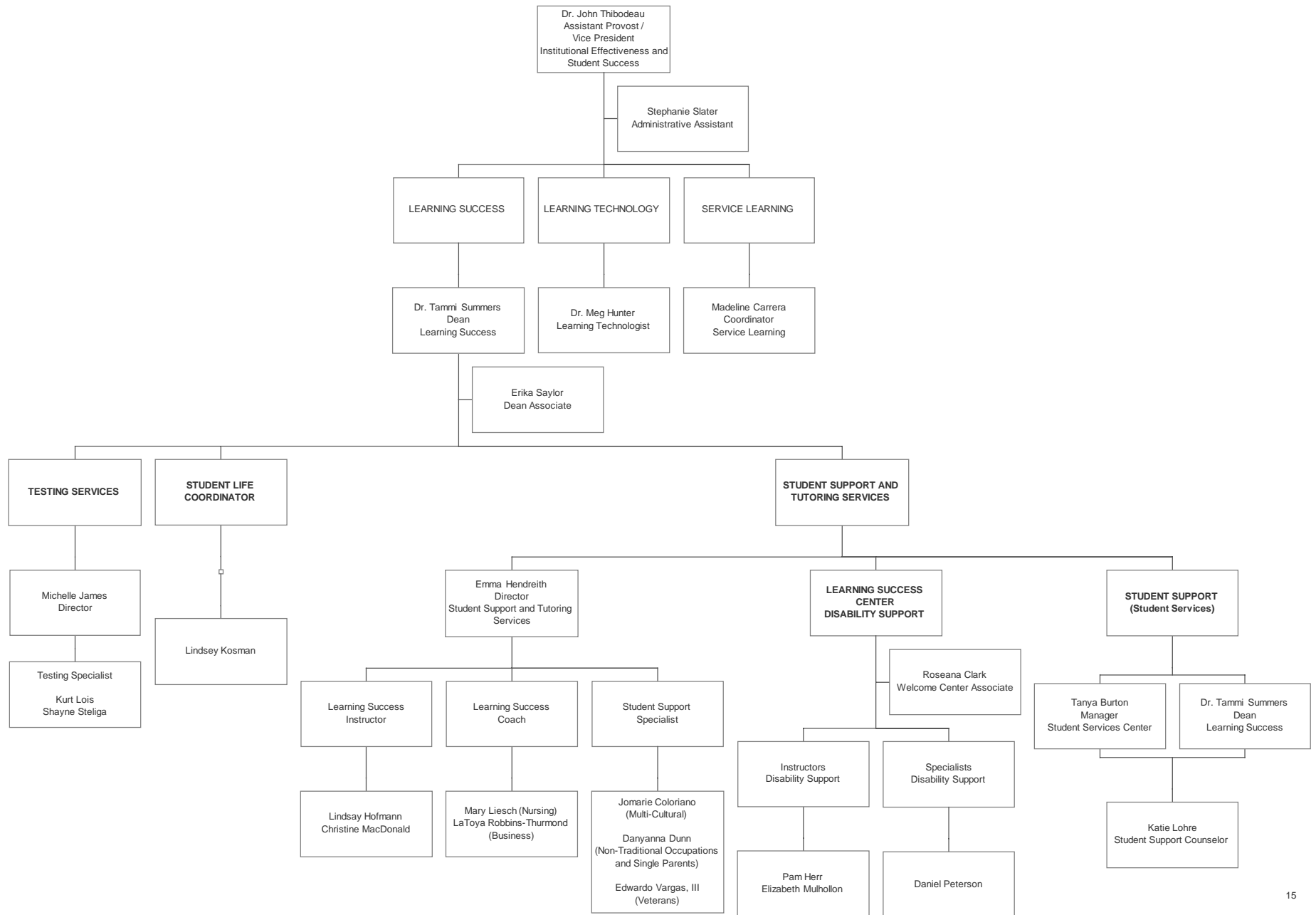
# LEARNING SUCCESS - ELKHORN CAMPUS



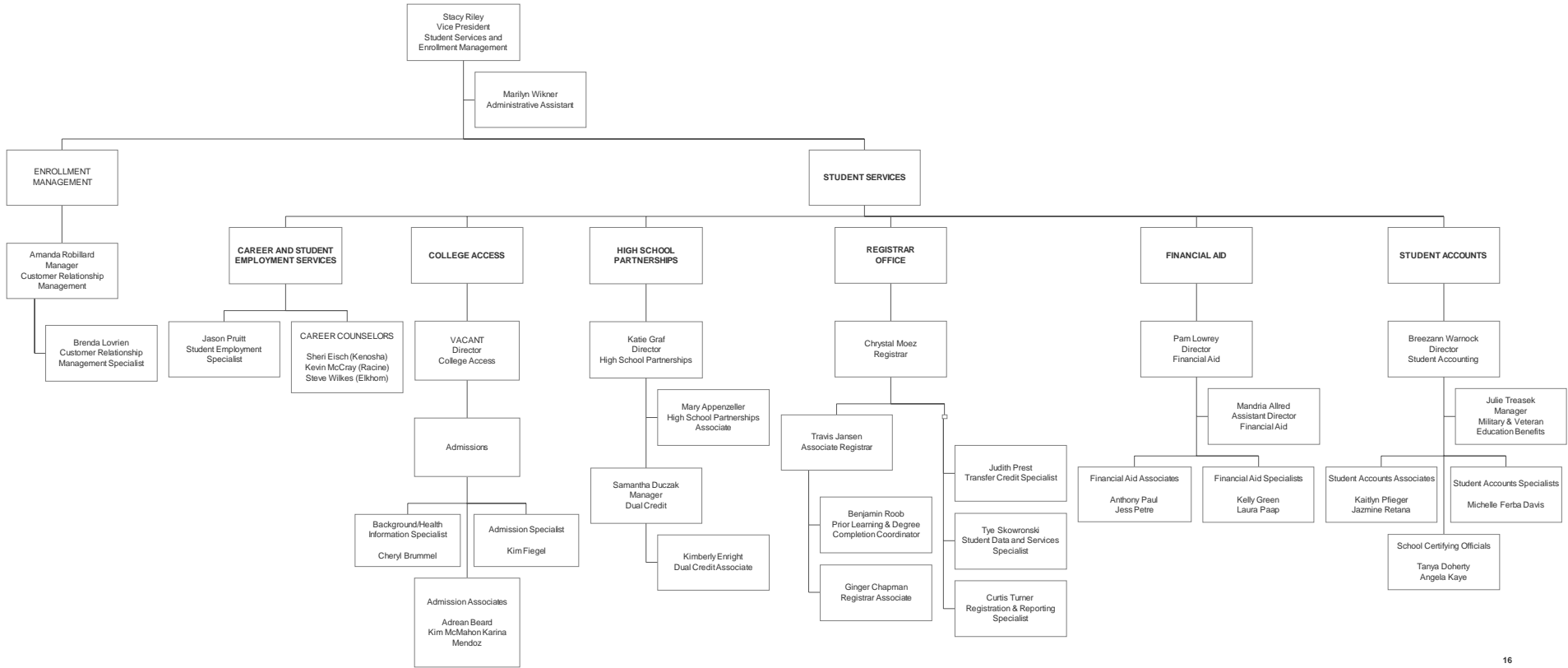
# LEARNING SUCCESS - KENOSHA CAMPUS



# LEARNING SUCCESS - RACINE CAMPUS

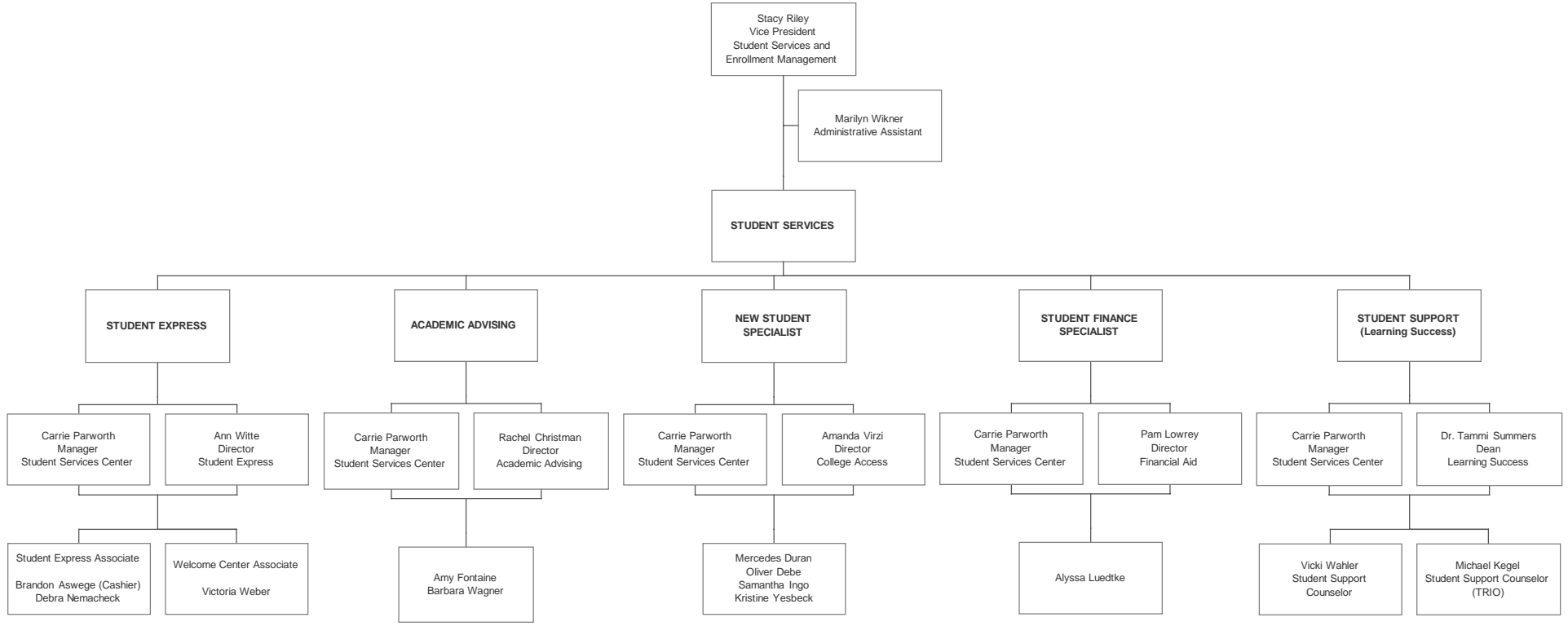


# STUDENT SERVICES AND ENROLLMENT MANAGEMENT

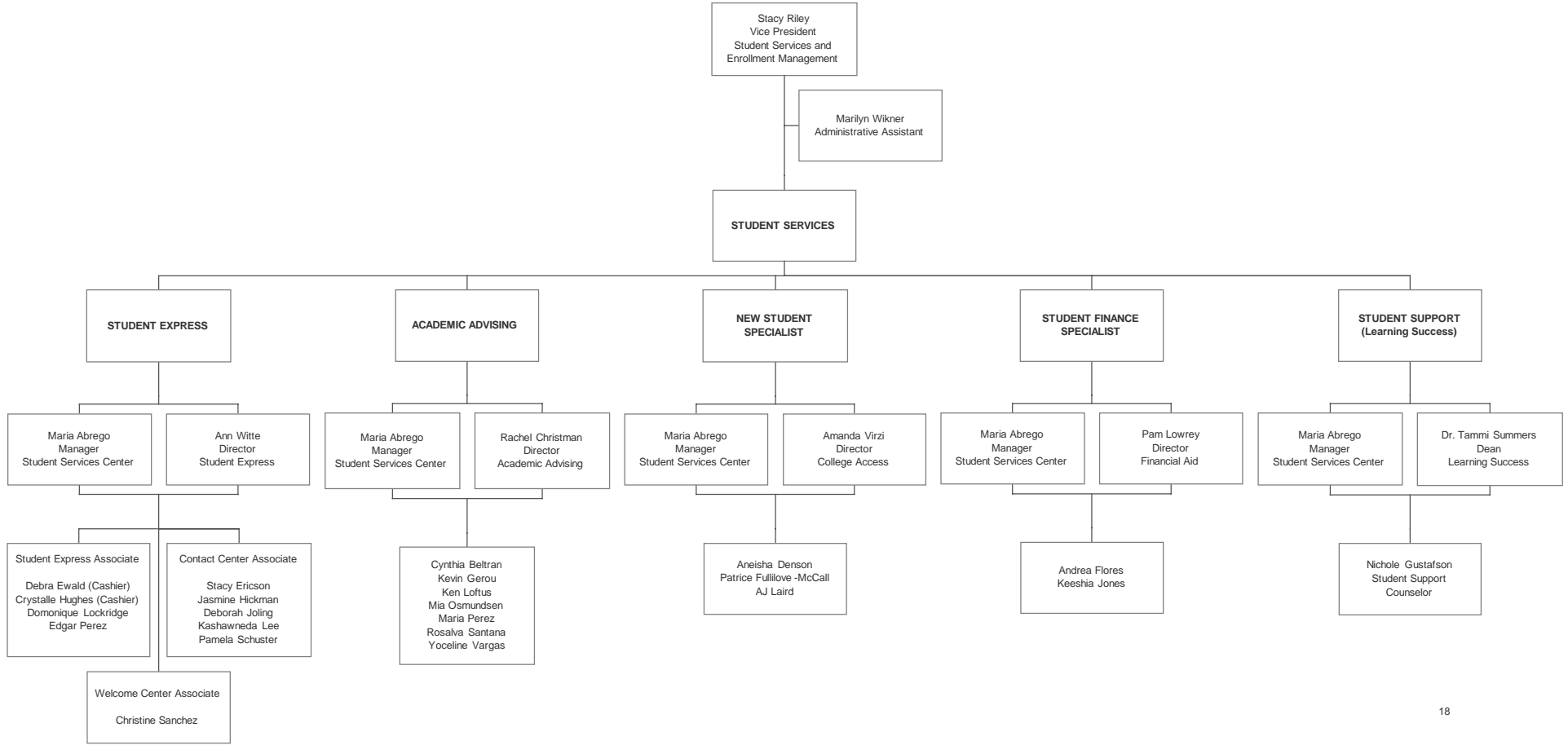




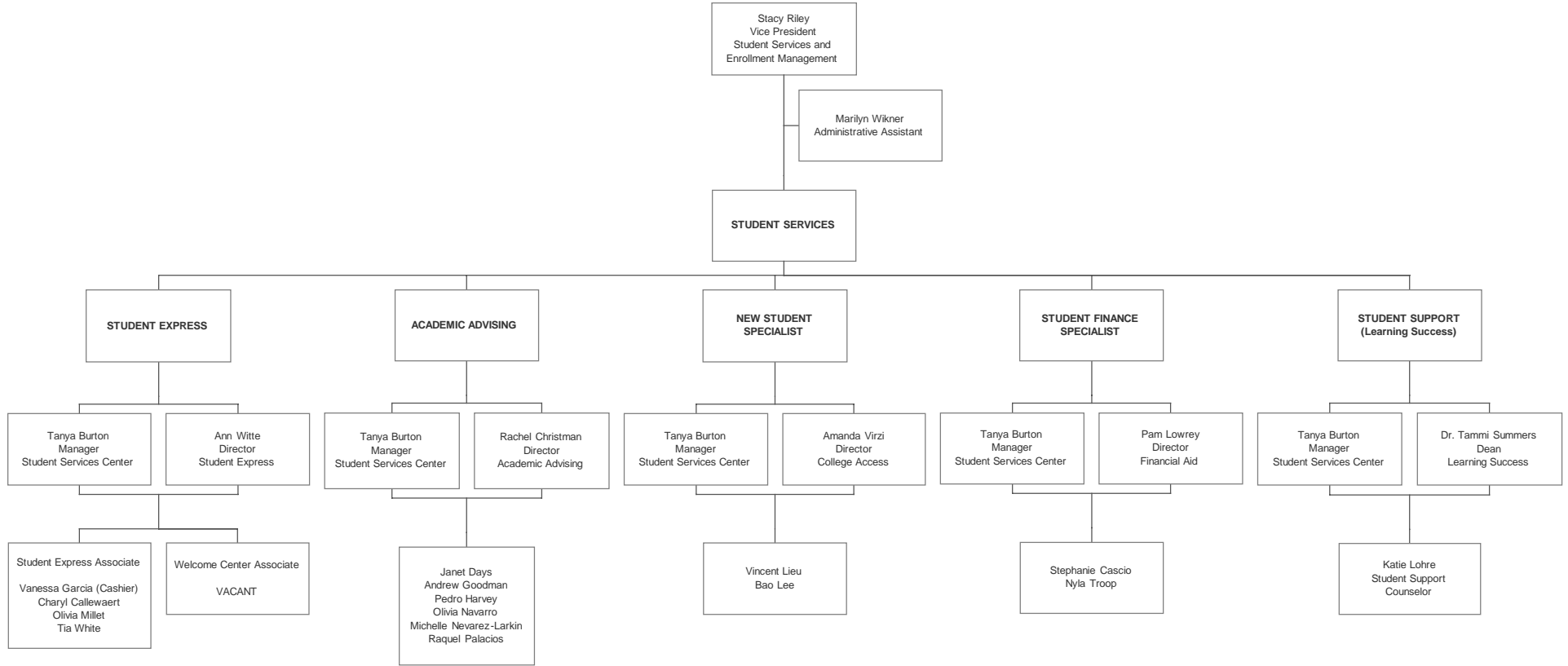
# STUDENT SERVICES - ELKHORN



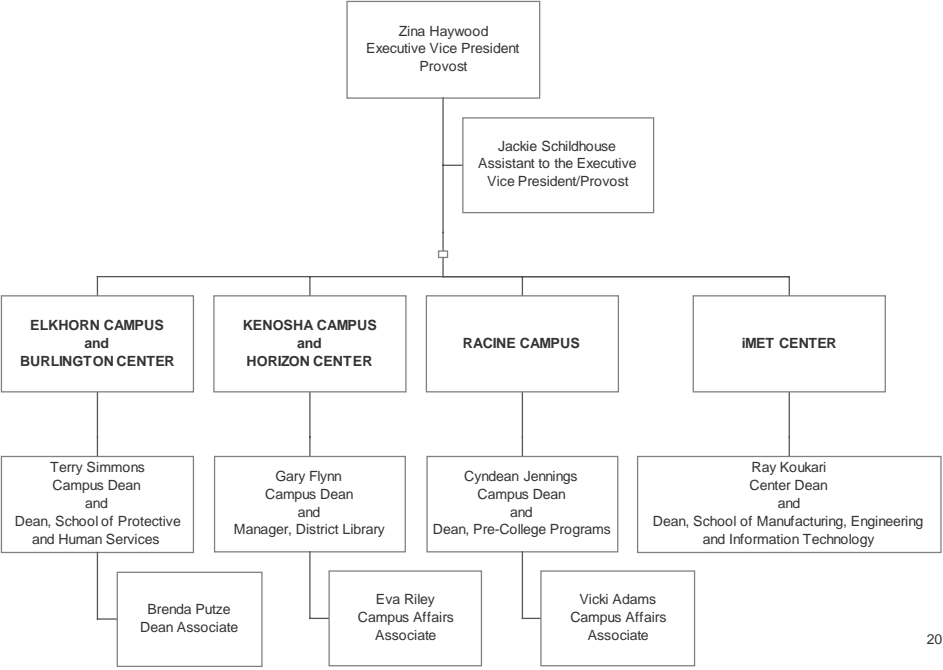
**STUDENT SERVICES - KENOSHA**



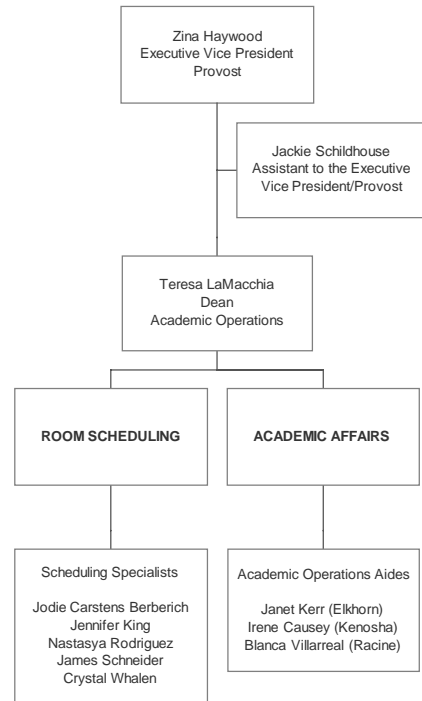
**STUDENT SERVICES - RACINE**



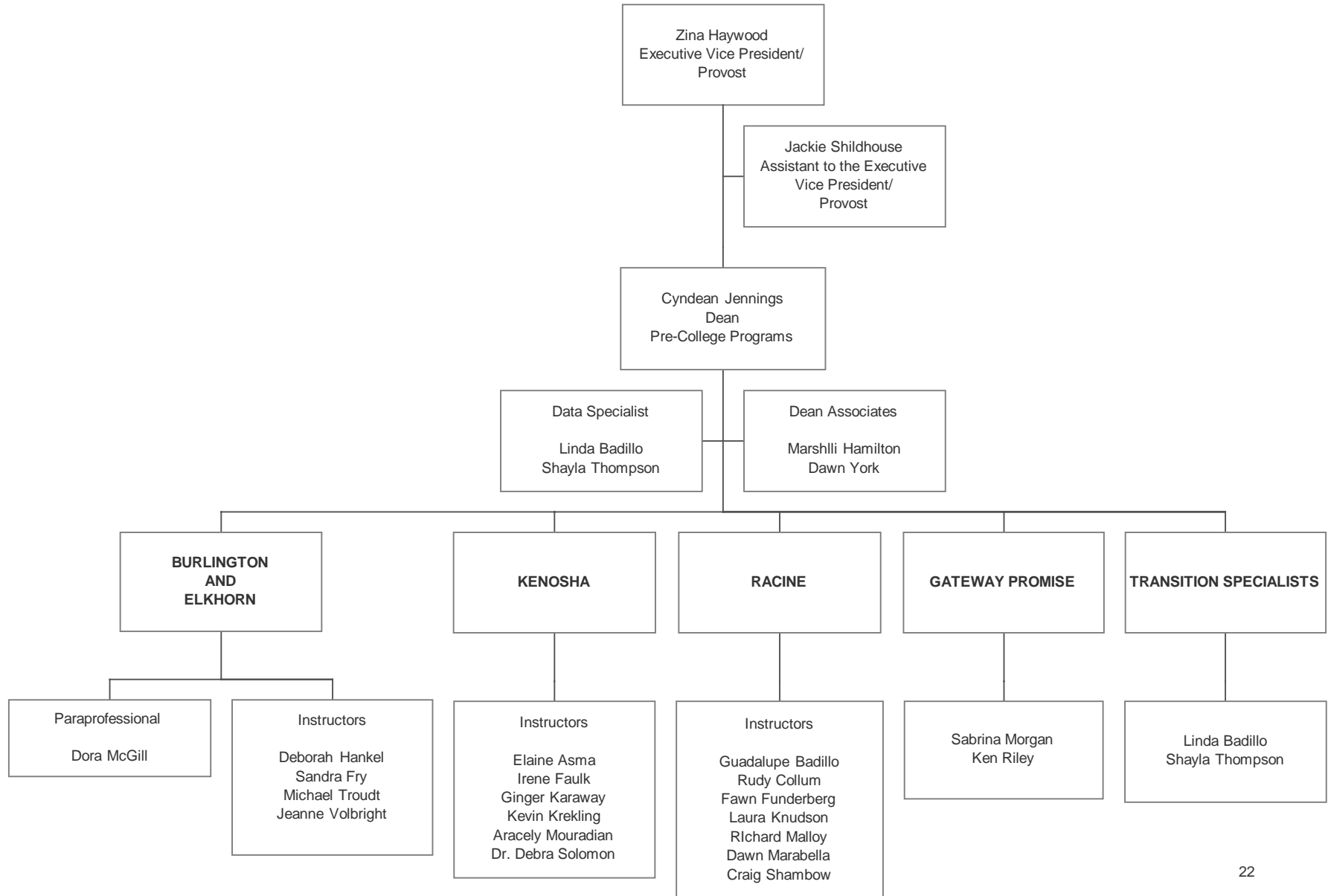
# CAMPUS AFFAIRS



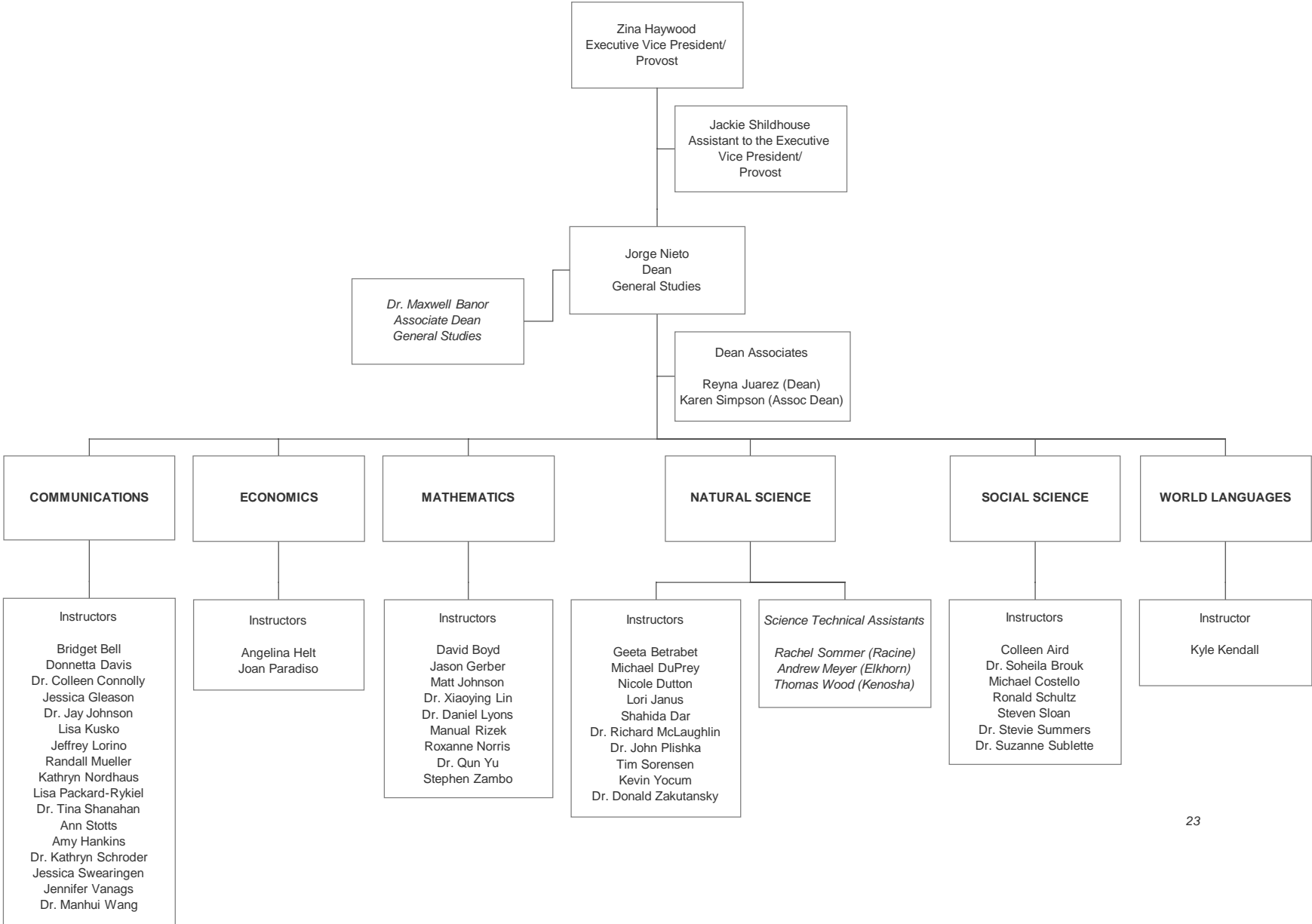
# ACADEMIC OPERATIONS



# PRE-COLLEGE PROGRAMS



# GENERAL STUDIES



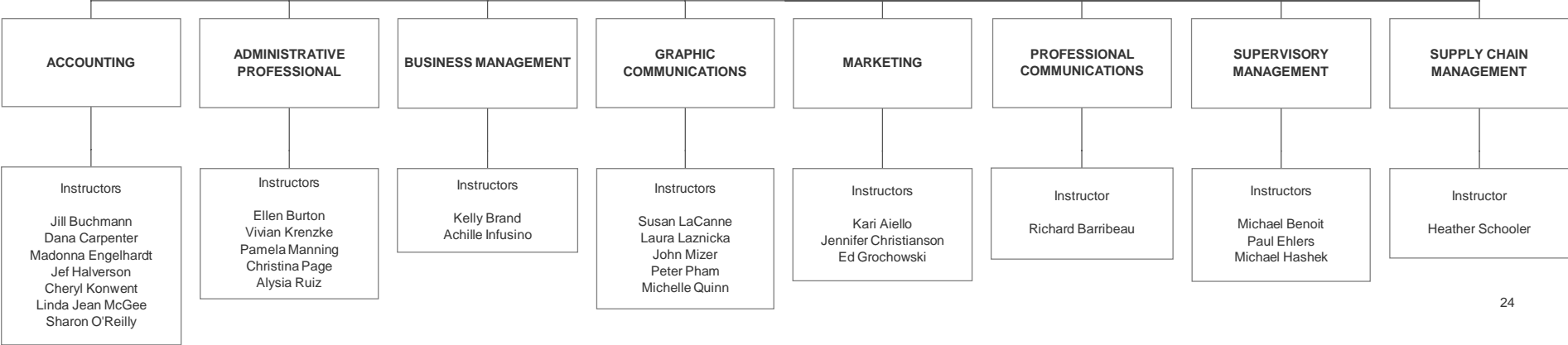
**SCHOOL OF BUSINESS AND TRANSPORTATION**

Zina Haywood  
Executive Vice President/  
Provost

Jackie Shildhouse  
Assistant to the Executive  
Vice President/  
Provost

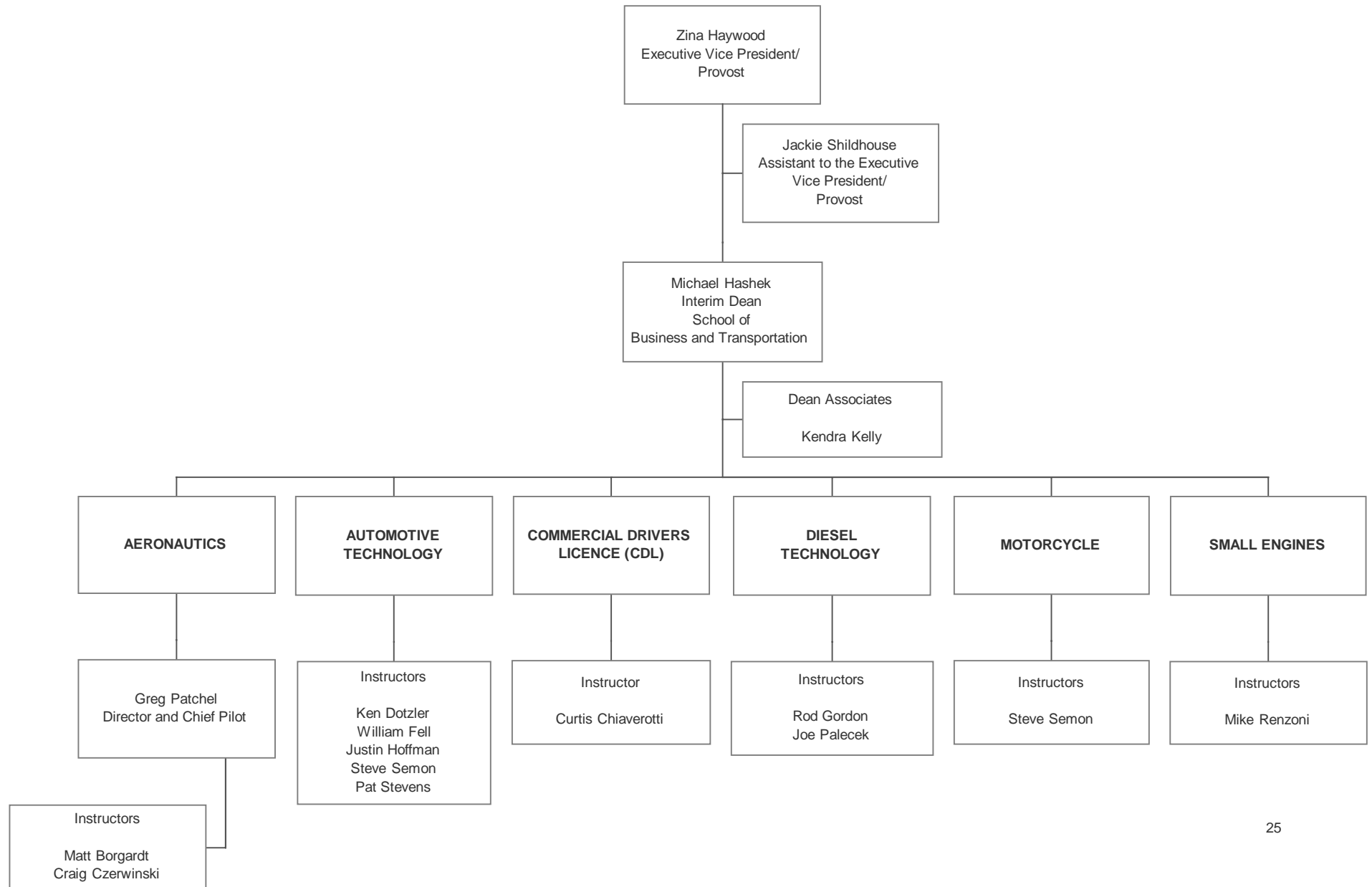
Michael Hashek  
Interim Dean  
School of  
Business and Transportation

Dean Associates  
Sherry Bubel  
Elizabeth Klinzing





# SCHOOL OF BUSINESS AND TRANSPORTATION



# SCHOOL OF HEALTH

Zina Haywood  
Executive Vice President/  
Provost

Jackie Shildhouse  
Assistant to the Executive  
Vice President/  
Provost

Dr. Victoria Hulback  
Dean  
School of Health

Ameila Riutta  
PTA Academic Coordinator  
of Clinical Education

Dean Associate  
Nancy Jorgensen  
Roxie Brown

**DENTAL ASSISTANT**

**HEALTH INFORMATION  
TECHNOLOGY**

**MEDICAL ASSISTANT**

**PHARMACY TECHNICIAN**

**PHYSICAL THERAPIST  
ASSISTANT**

**SURGICAL TECHNICIAN**

Instructors  
Heidi Gottfried  
Linsey Wermeling

Instructor  
Jacki King

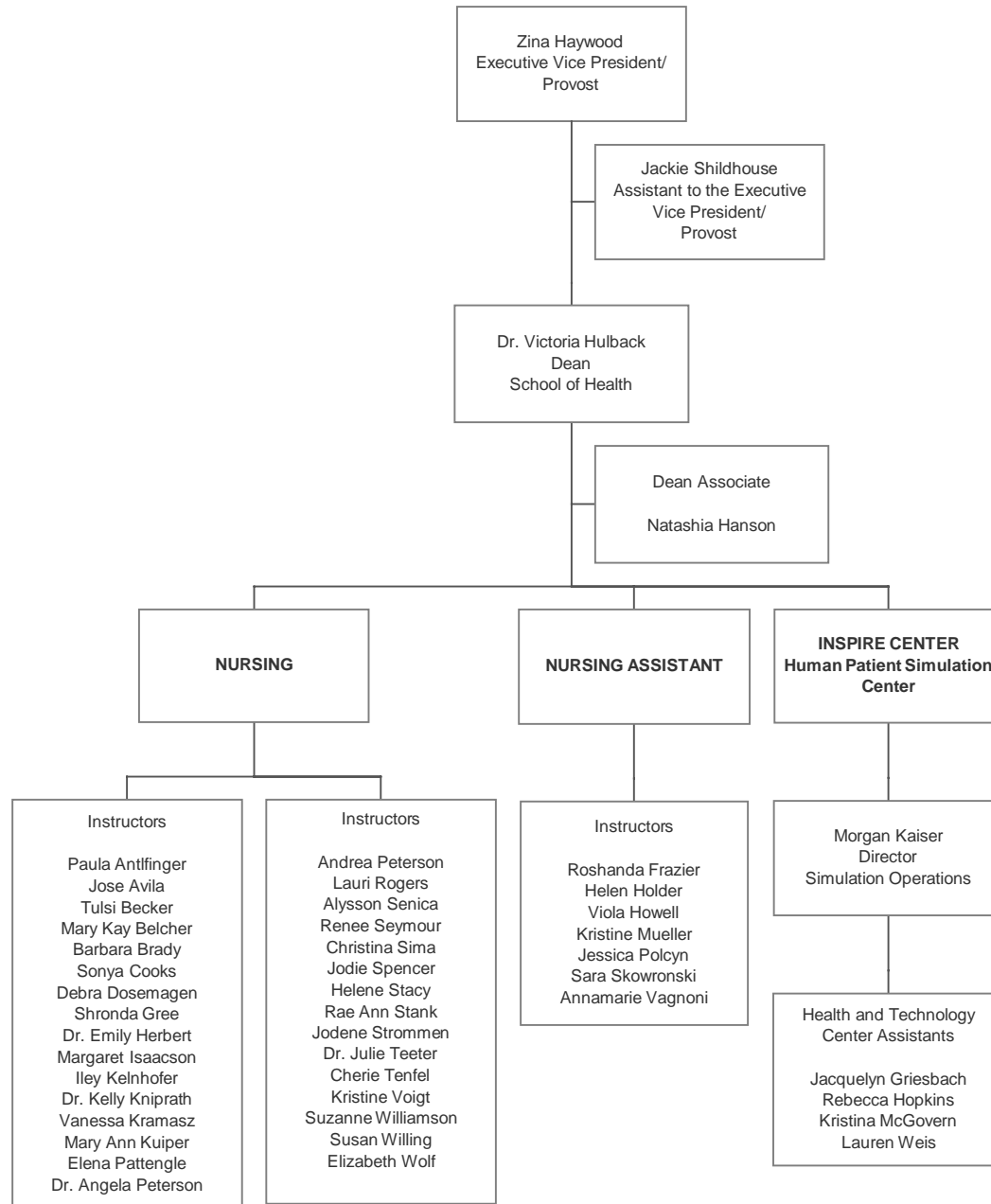
Instructors  
Robert Formanek  
Lori Andreucci  
Dr. Micheal Randolph  
Daniel Rusell

Instructor  
Dr. Jennifer Lucas

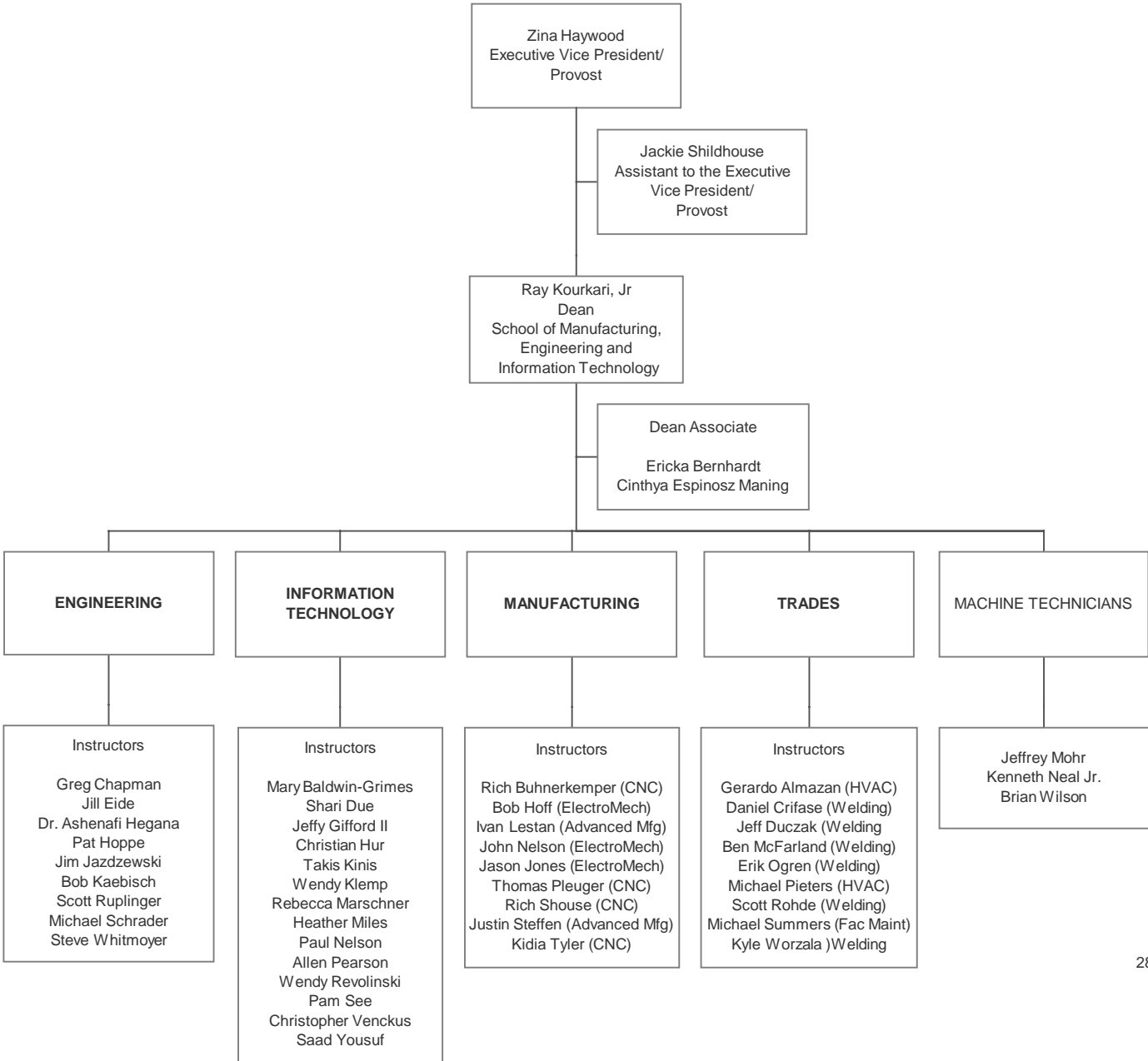
Instructors  
Dr. Traci Gotz  
Megan Zingelman

Instructors  
Vickie Kutzler  
Tedd Lupella  
Kristina Vines

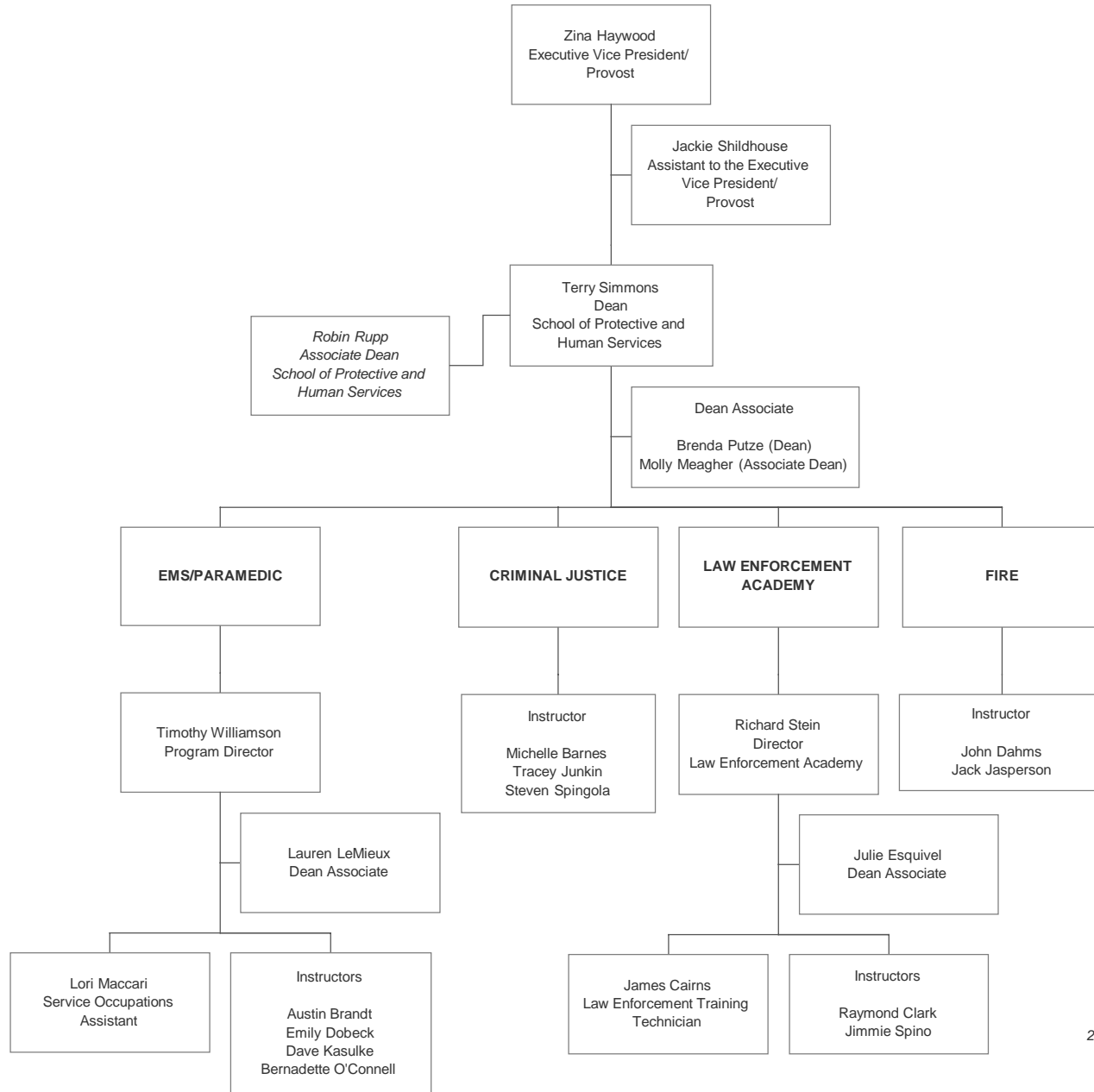
# SCHOOL OF HEALTH - NURSING



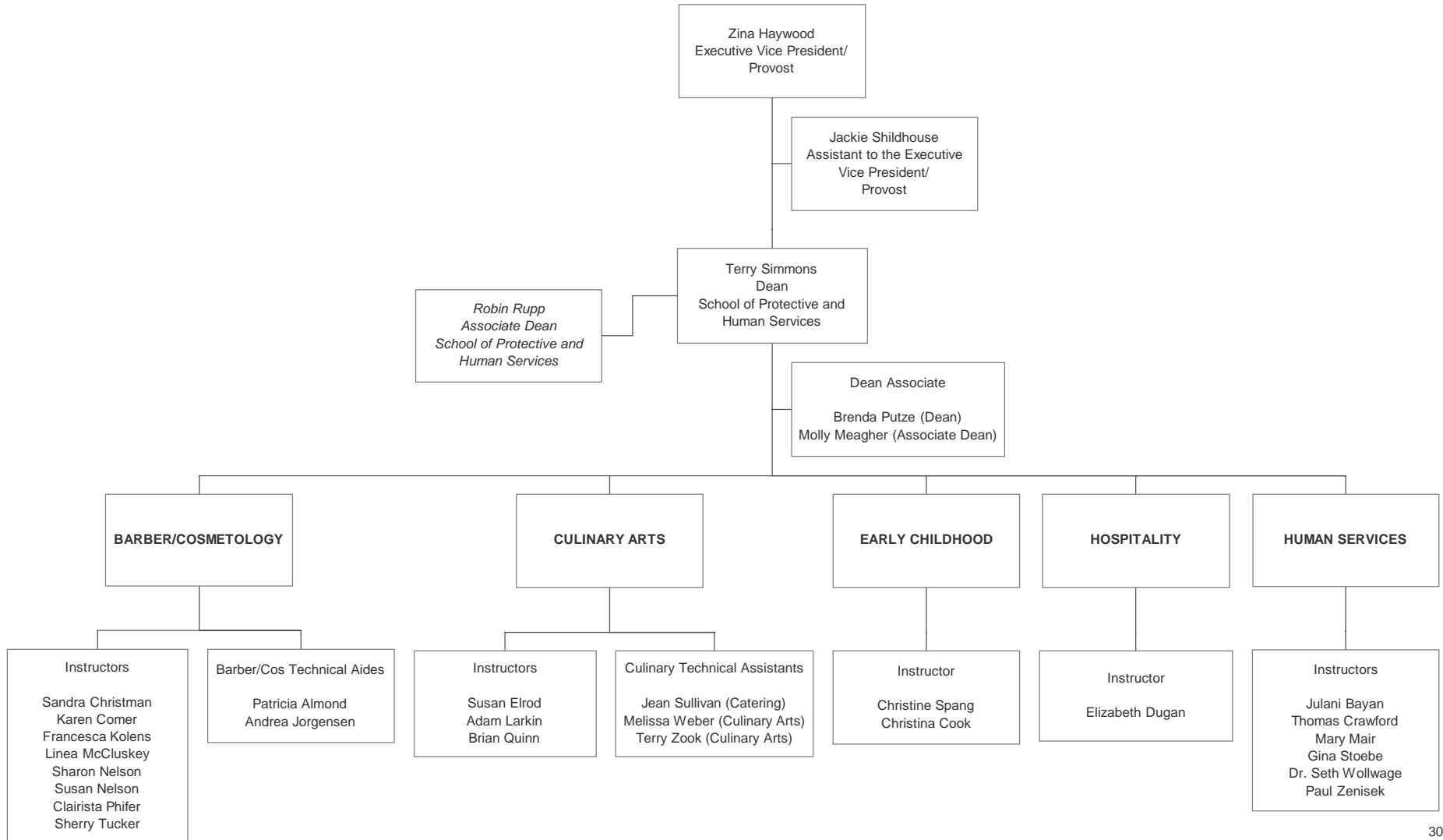
# SCHOOL OF MANUFACTURING, ENGINEERING AND INFORMATION TECHNOLOGY



# SCHOOL OF PROTECTIVE AND HUMAN SERVICES



# SCHOOL OF PROTECTIVE AND HUMAN SERVICES



# SCHOOL OF PROTECTIVE AND HUMAN SERVICES

