

# Emergency Medical Tech & Fire Science





# HERO Center

380 McCanna Pkwy. Burlington, WI 53105

## Emergency Medical Technician

Technical Diploma

## Advanced EMT

Technical Diploma

## EMT – Paramedic

Technical Diploma

## Paramedic Technician

Associate Degree

## Firefighter Technician

Technical Diploma

## Fire Medic

Associate Degree



# How do I become an EMT and or Fire Technician?

- Technical Diploma

OR

Associate Degree

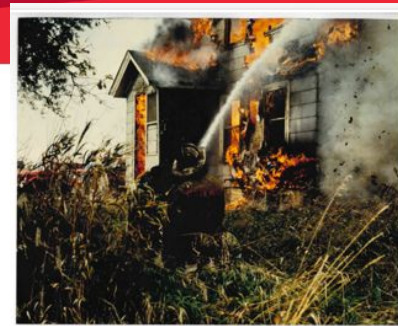
- Firefighter Technician
- Emergency Medical Technician
- Advanced Emergency Medical Technician
- EMT-Paramedic



- Fire Medic
- Paramedic Technician



# Did you know?



- Gateway partners with local fire departments for real life training
- The HERO Center was opened in 2010 to give students realistic, hands-on training
- There are nearly 260,000 emergency medical technicians in the US
- In 2018, there were an average of 3,612 fires a day across the US

# CAREER PATHWAY

GATEWAY TECHNICAL COLLEGE

## Paramedic Technician

### Previous Credit

There are many opportunities, both in high school and through previous college, work, and/or military experience, to earn credit at Gateway.

For more information about earning credit in high school and opportunities for credit for prior learning, please see reverse side.

### Technical Diploma

#### Emergency Medical Technician\* (5 Credits)

Potential Jobs:

- Emergency Medical Technician (EMT)

Median Income:

\$15.29 per hour

\$31,803 annually

Students who complete this program are prepared to earn the National Registry EMT Credential and take the State of WI EMT exam.

*\*This program is an admission req. to all other programs in the pathway.*

#### Adv. Emergency Medical Technician\* (4 Credits)

Potential Jobs:

- Advanced Emergency Medical Technician (AEMT)

Median Income:

\$16.12 per hour

\$33,529 annually

Students who complete this program are prepared to earn the National Registry AEMT Credential and take the State of WI EMT-Int. exam.

*\*Not an admission req., but students are highly encouraged to complete for success in higher-level programs.*

### Technical Diploma

#### EMT-Paramedic (38 Credits)

Potential Jobs:

- EMT-Paramedic

Median Income:

\$20.23 per hour

\$42,078 annually

Students who complete this program are prepared to earn industry-recognized certifications, including:

- National Registry Paramedic Credential

Students who successfully complete this program are prepared to take the State of WI Paramedic licensure exam.

### Associate Degree

#### Paramedic Technician (64 Credits)

Potential Jobs:

- Paramedic

Median Income:

\$21.19 per hour

\$44,075 annually

### Career

Students are prepared to enter their career field at any point along the pathway and advance as they complete higher-level credentials.

### Bachelor's Degree

Transfer up to 64 credits via existing articulation agreements with colleges such as:

- Bellevue University
- Cardinal Stritch University
- Ottawa University
- Trinity International University
- UW-Oshkosh (A to B agreement)

# What will you learn?

## Emergency Medical Technician (30-531-3)

Technical Diploma

**Effective 2020/2021**

*The course sequence shown on this sheet is the recommended path to completion. Courses will be scheduled in the terms indicated here.  
All courses should be taken in the order shown to help you stay on track and graduate according to your academic plan.*

**HE-D = HERO Center/days, HE-E = HERO Center/evenings, F=Fall, S=Spring, SU=Summer**

Term	Course #	Cr.	Course Title	Requisites (prereq- before/ coreq-with)	HE-D	HE-E
1	*531-312	2	EMR to EMT I	Prereq: Program Admission	F/S/SU	F/S
1	*531-313	3	EMR to EMT II	Prereq: 531-312	F/S/SU	F/S

**Minimum Program Total Credits Required: 5**



# What will you learn?

## EMT - Paramedic (31-531-1)

Technical Diploma

Effective 2020/2021

The course sequence shown on this sheet is the recommended path to completion. Courses will be scheduled in the terms indicated here.  
 All courses should be taken in the order shown to help you stay on track and graduate according to your academic plan.

HE-D = HERO Center/days, HE-E = HERO Center/evenings, F=Fall, S=Spring, SU=Summer

Term	Course #	Cr.	Course Title	Requisites (prereq- before/ coreq-with)	HE-D	HE-E
1	890-155	1	📍 Gateway to Success (G2S)		SU	SU
1	*531-911	2	EMS Fundamentals <sup>1,2,6</sup>	Prereq: 838-105 OR 831-107	SU	SU
2	*531-912	4	🎓 Paramedic Medical Principles	Coreq: 531-911	F	F
2	*531-913	3	🎓 Adv. Patient Asses. Principles <sup>6</sup>	Coreq: 531-911	F	F
2	*531-914	3	Adv. Pre-Hospital Pharmacology <sup>6</sup>	Coreq: 531-911	F	F
2	*531-915	2	Paramedic Respiratory Mgt. <sup>6</sup>	Coreq: 531-914	F	F
2	*531-925	4	Paramedic HPS Lab	Coreq: 531-912	F	F
2	*531-926	1	Paramedic Hospital Field <sup>3,4,6</sup>	Coreq: 531-912	F	F
2	*531-955	2	Paramedic Cardiology 1 <sup>6</sup>	Coreq: 531-915	F	F
3	*531-956	2	Paramedic Cardiology 2	Prereq: 531-955	S	S
3	*531-918	1	Adv. Emergency Resuscitation <sup>6</sup>	Coreq: 531-955	S	S
3	*531-919	4	Paramedic Medical Emergencies	Coreq: 531-955	S	S
3	*531-920	3	🎓 Paramedic Trauma	Coreq: 531-955	S	S
3	*531-921	3	Special Patient Populations	Coreq: 531-955	S	S
3	*531-922	1	EMS Operations <sup>6</sup>	Coreq: 531-955	S	S
3	*531-923	1	Paramedic Capstone	Coreq: 531-955	S	S
3	*531-927	2	Paramedic Hospital/Field II <sup>3,4,6</sup>	Coreq: 531-955	S	S

Minimum Program Total Credits Required: 39



# What will you learn?

## Paramedic Technician (10-531-1) Associate of Applied Science Effective 2020/2021

The course sequence shown on this sheet is the recommended path to completion. Courses will be scheduled in the terms indicated here. All courses should be taken in the order shown to help you stay on track and graduate according to your academic plan.

HE-D = HERO Center/days, HE-E = HERO Center/evenings, F=Fall, S=Spring, SU=Summer

Term	Course #	Cr.	Course Title	Requisites (prereq- before/ coreq-with)	HE-D	HE-E
1	890-155	1	Gateway to Success (G2S)		SU*	SU*
1	804-135	3	Quantitative Reasoning <sup>1</sup>	Prereq: 834-109	SU*	SU*
1	*531-911	2	EMS Fundamental <sup>1,2</sup>	Prereq: 838-105 OR 831-107	SU	SU
2	*531-912	4	Paramedic Medical Principles	Coreq: 531-911	F	F
2	*531-913	3	Adv. Patient Asses. Principles	Coreq: 531-911	F	F
2	*531-914	3	Adv. Pre-Hospital Pharmacology	Coreq: 531-911	F	F
2	*531-915	2	Paramedic Respiratory Mgt.	Coreq: 531-914	F	F
2	*531-925	4	Paramedic HPS Lab	Coreq: 531-912	F	F
2	*531-926	1	Paramedic Hospital Field <sup>3,4</sup>	Coreq: 531-912	F	F
2	*531-955	2	Paramedic Cardiology 1	Coreq: 531-915	F	F
3	*531-956	2	Paramedic Cardiology 2	Prereq: 531-955	S	S
3	*531-918	1	Adv. Emergency Resuscitation	Coreq: 531-955	S	S
3	*531-919	4	Paramedic Medical Emergencies	Coreq: 531-955	S	S
3	*531-920	3	Paramedic Trauma	Coreq: 531-955	S	S
3	*531-921	3	Special Patient Populations	Coreq: 531-955	S	S
3	*531-922	1	EMS Operations	Coreq: 531-955	S	S
3	*531-923	1	Paramedic Capstone	Coreq: 531-955	S	S
3	*531-927	2	Paramedic Hospital Field II <sup>3,4</sup>	Coreq: 531-955	S	S
4	801-136	3	English Composition 1 <sup>1,7</sup>	Prereq: 831-103 OR 831-107	SU/F*	SU/F*
4	801-196	3	Oral/Interpersonal Communication		SU/F*	SU/F*
	OR	3	OR			
	801-198	3	Speech			
4	806-177	4	General Anatomy and Physiology <sup>7</sup>		SU/F*	SU/F*
4	809-198	3	Psychology, Introduction to <sup>1,7</sup>	Prereq: 838-105 OR 831-107	SU/F*	SU/F*
5	806-179	4	Anatomy & Physiology, Advanced <sup>7</sup>	Prereq: 806-177	F/S*	F/S*
5	809-166	3	Ethics: Theory & Applications, Intro to <sup>1</sup>	Prereq: 838-105 OR 831-107	F/S*	F/S*
	OR	3	OR			
	809-172	3	Diversity Studies, Introduction to <sup>1</sup>			
5	809-188	3	Psychology, Developmental <sup>1</sup>	Prereq: 838-105 OR 831-107	F/S*	F/S*
	OR	3	OR			
	809-159	3	Psychology, Abnormal <sup>1</sup>	Prereq: 809-198		

Minimum Program Total Credits Required: 65

# CAREER PATHWAY

GATEWAY TECHNICAL COLLEGE

## Fire Medic

### Previous Credit

There are many opportunities, both in high school and through previous college, work, and/or military experience, to earn credit at Gateway.

For more information about earning credit in high school and opportunities for credit for prior learning, please see reverse side.

### Technical Diploma

#### Firefighter Technician (30 Credits)

Potential Jobs:

- Firefighter (including Volunteer)
- Firefighter/EMT

Median Income\*:  
\$21.82 per hour  
\$63,540 annually

\*Based on locally reported wage data. Wages may vary greatly depending upon employment with a volunteer or career fire department. Annual wages calculated based on the standard 2,912 hours per year work schedule for firefighters.

Students who complete this program are prepared to earn industry-recognized certifications, including:

- Firefighter I
- Firefighter II
- National Registry EMT Credential/State of WI EMT Licensure

Note: Only 10 of the 30 credits required for this program will transfer to the Fire Medic associate degree.

### Associate Degree

#### Fire Medic (63 Credits)

Potential Jobs:

- Firefighter/Paramedic
- Fire Medic

Median Income\*:  
\$23.60 per hour  
\$68,723 annually

\*Based on locally reported wage data. Wages may vary greatly depending upon employment with a volunteer or career fire department. Annual wages calculated based on the standard 2,912 hours per year work schedule for firefighters.

Students who complete this program are prepared to earn industry-recognized certifications, including:

- National Registry Paramedic Credential

Students who successfully complete this program are prepared to take the State of WI Paramedic licensure exam.

### Career

Students are prepared to enter their career field at any point along the pathway and advance as they complete higher-level credentials.

### Bachelor's Degree

Transfer up to 63 credits via existing articulation agreements with colleges such as:

- Bellevue University
- Cardinal Stritch University
- Lakeland University
- Ottawa University
- UW-Oshkosh (A to B agreement)
- UW-Stout



# What will you learn?

## Firefighter Technician (31-503-1)

Technical Diploma  
**Effective 2020/2021**

*The course sequence shown on this sheet is the recommended path to completion. Courses will be scheduled in the terms indicated here.  
 All courses should be taken in the order shown to help you stay on track and graduate according to your academic plan.*

**HE-D=HERO Center/Days, HE-E=HERO Center/Evenings, F=Fall, S=Spring, SU=Summer**

Term	Course #	Cr.	Course Title	Requisites (prereq- before/ coreq-with)	HE-D	HE-E
1	890-155	1	📍 Gateway to Success (G2S)		F/S+	F/S+
1	*503-142	4	Firefighting Principles <sup>2</sup>		F/S	F/S
1	*503-151	4	Fire Prevention <sup>2</sup>		F/S	F/S
1	*503-130	2	🎓 Firefighter Health & Wellness		F/S	F/S
2	*531-312	2	EMR to EMT I	Prereq: Program Admission	S/F	S/F
2	*531-313	3	EMR to EMT II	Prereq: 531-312	S/F	S/F
2	*503-155	4	Fire Protection Hydraulics <sup>2</sup>	Prereq: 503-142	S/F	S/F
2	*503-143	3	Building Construction		S/F	S/F
3	*503-106	3	Firefighting Principles II <sup>2</sup>	Prereq: 503-142	F/S	F/S
3	*503-120	2	Internship	Prereq: 503-142	F/S	F/S
3	*503-192	3	🎓 Principles of Em Serv Safety & Survival		F/S	F/S

**Minimum Program Total Credits Required: 31**



# What will you learn?

## Fire Medic (10-531-2) Associate of Applied Science Effective 2020/2021

The course sequence shown on this sheet is the recommended path to completion. Courses will be scheduled in the terms indicated here.  
All courses should be taken in the order shown to help you stay on track and graduate according to your academic plan.

HE-D = HERO Center/days, HE-E = HERO Center/evenings, F=Fall, S=Spring, SU=Summer

Term	Course #	Cr.	Course Title	Requisites (prereq- before/ coreq-with)	HE-D	HE-E
1	890-155	1	📍 Gateway to Success (G2S)		F/S*	F/S*
1	801-136	3	English Composition 1 <sup>1,7</sup>	Prereq: 831-103 OR 831-107	F/S*	F/S*
1	*503-192	3	Principles of Em Serv Safety & Survival		F/S	F/S
1	809-198	3	Psychology, Introduction to <sup>1,6,7</sup>	Prereq: 838-105 OR 831-107	F/S*	F/S*
1	809-172	3	Diversity Studies, Introduction to <sup>1</sup>	Prereq: 838-105 OR 831-107	F/S*	F/S*
2	804-135	3	Quantitative Reasoning <sup>1</sup>	Prereq: 834-109	S/F*	S/F*
2	801-196	3	Oral/Interpersonal Communication		S/F*	S/F*
2	*503-143	3	Building Construction		S/F	S/F
2	*503-130	2	Firefighter Health & Wellness		S/F	S/F
2	*503-120	2	Internship	Prereq: 503-142	S/F	S/F
3	*531-911	2	EMS Fundamental <sup>1,2</sup>	Prereq: 838-105 OR 831-107	SU	SU
4	*531-912	4	🎓 Paramedic Medical Principles	Coreq: 531-911	F	F
4	*531-913	3	🎓 Adv. Patient Asses. Principles	Coreq: 531-911	F	F
4	*531-914	3	Adv. Pre-Hospital Pharmacology	Coreq: 531-911	F	F
4	*531-915	2	Paramedic Respiratory Mgt.	Coreq: 531-914	F	F
4	*531-925	4	Paramedic HPS Lab	Coreq: 531-912	F	F
4	*531-926	1	Paramedic Hospital Field <sup>3,4</sup>	Coreq: 531-912	F	F
4	*531-955	2	Paramedic Cardiology 1	Coreq: 531-915	F	F
5	*531-956	2	Paramedic Cardiology 2	Prereq: 531-955	S	S
5	*531-918	1	Adv. Emergency Resuscitation	Coreq: 531-955	S	S
5	*531-919	4	Paramedic Medical Emergencies	Coreq: 531-955	S	S
5	*531-920	3	🎓 Paramedic Trauma	Coreq: 531-955	S	S
5	*531-921	3	Special Patient Populations	Coreq: 531-955	S	S
5	*531-922	1	EMS Operations	Coreq: 531-955	S	S
5	*531-923	1	Paramedic Capstone	Coreq: 531-955	S	S
5	*531-927	2	Paramedic Hospital Field II <sup>3,4</sup>	Coreq: 531-955	S	S

Minimum Program Total Credits Required: 64

# Interested in Getting Started Now?

## Fire Science in High School...

- Gateway Classes
  - Firefighting Principles II
  - Hazardous Materials Operations
  - Fighter Fighting Principles II
  - Building Construction
  - Fire Prevention
  - Principles of Emergency Services Safety and Survival

## EMT in High School...

- Gateway Classes
  - Emergency Medical Responder
  - Emergency Medical Technician





# EXPLORE!





# Ready, set, understand fire elements and safety

- In this activity, you will learn about the differences between prescribed fires and wildfires through a STEM lesson. Follow the directions below:

1. Click on STEM: Living with Fire
2. Watch the Getting Started video
3. Talk about the Essential Question with your parents.
4. Complete the Task directions

Next

Ready, set, understand fire elements and  
safety

5. Complete the Science activity
6. Complete the Technology activity
7. Complete the Engineering activity
8. Complete the Math Activity

A light blue arrow pointing to the right, with the word "Next" in red text inside it.

Next



# EXPLORE!





# Ready, set see what questions EMTs ask for a medical call

- You will watch two videos EMT scenario videos and follow along on the Patient Assessment sheet and write down what the patient is experiencing based on the video. You may have to pause the videos to take time to review the seet. If you enjoy this activity, you could even create your own scenario with a parent as your patient.
- There is a vocabulary slide to help with some of the words you might not know
- The Patient Assessment sheet is after the vocabulary slide

# Vocabulary Terms

**Cardiovascular**- relating to or affecting the heart and blood vessels

**Neurological**-relating to or affecting the nerves and nervous system

**Integumentary**-relating to or affecting the skin

**Pulmonary** - relating or affecting the lungs

**Reproductive** - relating to or affecting the male and female reproductive systems

**Musculoskeletal** - relating to or affecting the muscles and bones

**GI / Gastrointestinal** - relating to or affecting the stomach and intestines

**Psychological / Social** - relating to or affecting the person's mind and awareness

A light blue arrow pointing to the right with the word 'Next' in red text inside it.

Next

# NREMT EMT Patient Assessment 2014 - Medical

## 1 SCENE SIZE-UP

**Scene safe?**

**BSI** (gloves, mask etc)

**MOI & NOI** mechanism of injury  
nature of illness?

**Number of patients?**

**EMS assistance needed?**

Hello, my name is \_\_\_\_\_

I'm an EMT, we're here to help you.

Why did you call us today?

Is there a chance that you have fallen today?

Consider Manual C-spine Application Here! **X**

## 2 PRIMARY SURVEY/ RESUSCITATION

**Verbalize general impression of the patient** (What do you see?)

**L.O.C**

level of consciousness

- x 1 "What's your name?"
- x 2 "Where are you right now?"
- x 3 "What day is it?"
- x 4 "Tell me what happened?"

**Alert** - responsive

**Verbal** - responds to verbal

**Pain** - responds to pain

**Unresponsive** - to all stimulation

**? What is/ are the Chief Complaint or Apparent Life-threats?**

## A Check Airway

Opens & assess airway  
Inserts adjunct as indicated  
**Suction Needed?**

## B Check Breathing

Assess breathing  
Assures adequate ventilation  
Oxygen therapy (**O<sub>2</sub>-15LPM**)  
Manage injuries that compromise breathing/ventilation  
**BVM POS Pressure O<sub>2</sub>?**

## C Check Circulation

Checks pulse - **Rate & Quality**  
Assess skin **Color, Temp, Condition**  
Assess & control major bleeds  
(**Blood sweep if needed!**)

**Initiate shock management**  
(positions patient - conserves body heat)  
(**Mylar Space Blanket Wrap Here**)

**Patient Priority (transport)**  
(**critical/ stable**)(**contact hospital**)  
Identifies patient priority & makes treatment/transport decision (based on calculated GCS)

## 3 History

**Onset** - When did this start? What were you doing?

**Provocation** - What makes it feel better or worse?

**Quality** - Can describe this pain? Dull -Sharp...

**Radiation** - Where else does it go?

**Severity** - On a scale from one to ten.

**Time** - How long has this been going on?

**Signs & Symptoms** - What can you see? What is the Chief Complaint?

**Allergies** - What have you come in contact with? Meds. Insects, Pollen, Food, Latex?

**Medications** - S.H.O.P. - Street, Herbal, OTC, Prescriptions

**Past Medical History** - Has this happened before? Is this a pre-existing condition?

**Last Oral intake** - When did you eat last? What was it? Nausea or Vomiting?

**Events** - What were you doing when you started to feel this way?

## 4 SECONDARY ASSESSMENT

Assesses affected body part and or system

☐ **Cardiovascular**

☐ **Neurological**

☐ **Integumentary**

☐ **Reproductive**

☐ **Pulmonary**

☐ **Musculoskeletal**

☐ **GI/GU**

☐ **Psychological / Social**

## 5 VITAL SIGNS

**Baseline Vitals**

**Blood Pressure**

**Respiration (Rate & Quality)**

**Heart rate (Rate & Quality)**

**Skin (Color, Temp & Condition)**

**Pupils (PERLL)**

**SPO<sub>2</sub> (OXYGEN SATURATION)**

**States field impression of patient**

**Interventions**

(verbalizes proper interventions / treatment)

## 6 Reassessment

**Mental status ?**

Airway  
Breathing  
Circulation

**Re-check vitals**

**Re-check interventions**  
(**O<sub>2</sub>, bandages, splints etc.**)

Repeat every

**5 minutes for Critical Patient**

Repeat every

**15 minutes for Stable Patient**

**Transfer Care and Document The Call!**



# Ready, set see what questions EMTs ask for a medical call

## Directions

- Watch this patient scenario [video](#) of an EMT arriving on a medical call scene for cardiovascular symptoms
- Follow along on the patient assessment sheet and mark off the steps the EMT is completing and what symptoms the patient is experiencing

## Directions

- Watch this patient scenario [video](#) of an EMT arriving on a medical call scene for musculoskeletal system
- Follow along on the patient assessment sheet and mark off the steps the EMT is completing and what symptoms the patient is experiencing