



Bryan D. Albrecht, Ed.D.  
President

September 10, 2015

**BURLINGTON CENTER**  
496 McCanna Pkwy.  
Burlington, WI 53105-3623  
262.767.5200

**CENTER FOR BIOSCIENCE  
& INFORMATION  
TECHNOLOGY**  
3520 - 30th Avenue  
Kenosha, WI 53144-1690  
262.564.3600

**ELKHORN CAMPUS**  
400 County Road H  
Elkhorn, WI 53121-2046  
262.741.8200

**HERO (HEALTH AND  
EMERGENCY RESPONSE  
OCCUPATIONS) CENTER**  
380 McCanna Pkwy.  
Burlington, WI 53105-3622  
262.767.5204

**HORIZON CENTER FOR  
TRANSPORTATION  
TECHNOLOGY**  
4940 - 88th Avenue  
Kenosha, WI 53144-7467  
262.564.3900

**SC JOHNSON  
iMET (iNTEGRATED  
MANUFACTURING  
& ENGINEERING  
TECHNOLOGY) CENTER**  
Renaissance Business Park  
2320 Renaissance Blvd.  
Sturtevant, WI 53177-1763  
262.898.7500

**KENOSHA CAMPUS**  
3520 - 30th Avenue  
Kenosha, WI 53144-1690  
262.564.2200

**LAKEVIEW ADVANCED  
TECHNOLOGY CENTER**  
9449 - 88th Avenue (Highway H)  
Pleasant Prairie, WI 53158-2216  
262.564.3400

**RACINE CAMPUS**  
1001 South Main Street  
Racine, WI 53403-1582  
262.619.6200

**WGTD HD**  
Your Gateway to Public Radio  
wgtd.org  
262.564.3800

262.741.8492 TTY  
866.971.7688 VP

EQUAL OPPORTUNITY/ACCESS/  
EMPLOYER AND EDUCATOR  
OFRECE IGUALDAD EN OPORTUNIDADES/  
ACCESO/EMPLEO Y EDUCACIÓN

[www.gtc.edu](http://www.gtc.edu)

**NOTICE OF MEETING**

**GATEWAY TECHNICAL COLLEGE  
DISTRICT BOARD  
Regular Meeting  
Thursday, September 17, 2015 – 8:00 a.m.  
Kenosha Campus – Academic Building  
3520 30<sup>th</sup> Avenue, room S100A  
Kenosha, WI 53144**

The Gateway Technical College District Board will hold its regular meeting on Thursday, September 17, 2015 at 8:00 a.m. at the Kenosha Campus, Academic Building, room S100A, 3520 30<sup>th</sup> Avenue, Kenosha, WI. The agenda is included.

Bryan D. Albrecht, Ed.D.  
President and Chief Executive Officer

# GATEWAY TECHNICAL COLLEGE DISTRICT BOARD

Regular Meeting – Thursday, September 17, 2015 – 8:00 a.m.

Kenosha Campus – Academic Building  
3520 30<sup>th</sup> Avenue, room S100A, Kenosha, WI

Info. / Disc	Action	Roll Call	<b>AGENDA</b>		Page
			I.	<b>Call to Order</b> A. Open Meeting Compliance	3
		X	II.	<b>Roll Call</b>	3
	X		III.	<b>Approval of Agenda</b>	4
	X		IV.	<b>Approval of Minutes</b> A. August 20, 2015 – Regular Meeting	4
X			V.	<b>Citizen Comments</b>	11
X			VI.	<b>Committee of the Whole</b> A. Board of Trustees Group Photo	13
X				B. Strengths and Team Building	14
X			VII.	<b>Chairperson's Report</b> A. End Statement Committee Report	16
X				B. Board Evaluation Summary	17
X				C. District Boards Association Report – Layla Merrifield	18
X			VIII.	<b>President's Report</b> A. Announcements	20
X				B. State Board Meeting	21
X				C. Student Representative	22
			IX.	<b>Operational Agenda</b>	23
		X		A. Action Agenda	24
		X		1. FY 2014-2015 Budget Revision #5	32
	X			2. Resolution No. F-2015-2016C.2 – Resolution Awarding the Sale of \$500,000 General Obligation Promissory Notes, Series 2015-2016C	46
	X			3. Resolution B-2015 C.1 & C.2 Law Enforcement Academy Renovations, Academic Building, Kenosha Campus	53
	X			4. Resolution B-2015 D.1 & D.2 Shooting Range Expansion, Academic Building, Kenosha Campus	61
	X			B. Consent Agenda	70
				1. Finance	74
				a) Financial Statement and Expenditures over \$2,500	77
				b) Cash and Investment Schedules	98
				2. Personnel Report	103
				3. Contracts for Instructional Delivery	105
				4. Advisory Committee Activity Report	107
				5. Program Approvals:	109
				a) Apprentice Program Reinstatement Request 50-420-1 Mold Maker Apprentice	111
				b) New Apprentice Program Request 50-420-2 Machinist Apprentice	114
				c) New Apprentice Program Request 50-420-9 Industrial Manufacturing Technician	118
				d) New Apprentice Program Request 50-461-1 Maintenance Technician Apprentice	114
				6. AACC Pathways Project Approval	118
				7. Approval of BIDS:	114
				a) Bid #1484 – Technical Building Electrical Service Upgrade Racine Campus	118
				b) Bid #1487 – Boiler Replacement Project Kenosha Campus	118
			X.	<b>Policy Governance Monitoring Reports</b>	122
	X			A. Ends Statement Monitoring End Statement #5 – <b>Gateway provides</b> a positive return on taxpayer and community investment by leveraging its core capabilities in a financially and socially responsible manner. <i>FY14-15 Preliminary Finance Results (Unaudited) – B. Thomey</i>	123
X			XI.	<b>Board Member Community Reports</b>	127
X	X		XII.	<b>Next Meeting Date and Adjourn</b> A. Regular Meeting - Thursday, October 22, 2015, 8:00 am, Racine Campus, R301 B. Adjourn	129

# GATEWAY TECHNICAL COLLEGE DISTRICT BOARD

## Regular Meeting

Thursday, September 17, 2015 – 8:00 a.m.

Kenosha Campus – Academic Building

3520 30<sup>th</sup> Avenue, Room S100A, Kenosha, WI 53144

- I. CALL TO ORDER
  - A. Open Meeting Compliance

## II. ROLL CALL

Ram Bhatia	_____
William Duncan	_____
Ronald J. Frederick	_____
Susan Greenfield	_____
Bethany Ormseth	_____
Scott Pierce	_____
Roger Zacharias	_____
Pamela Zenner-Richards	_____
Gary Olsen	_____

### **Our Positive Core – Gateway Technical College District Board**

Our shared strengths as a Board that we draw upon to do our work:

- Belief in the value of Gateway Technical College
- Commitment to our community
- Common sense of mission
- Mutual respect
- Sense of humor
- Open-mindedness & willingness to question

III. APPROVAL OF AGENDA

Items on the Consent Agenda for discussion

IV. APPROVAL OF MINUTES

A. August 20, 2015 – Regular Meeting

GATEWAY TECHNICAL COLLEGE DISTRICT BOARD
Regular Meeting
August 20, 2015

The Gateway Technical College District Board met on Thursday, August 20, 2015 at the SC Johnson integrated Manufacturing and Engineering Technology (iMET) 2320 Renaissance Blvd, Room 104, Sturtevant, WI 53177. The meeting was called to order at 8:00 am by Gary Olsen, Chairperson.

**I. Call to Order**

A. Open Meeting Compliance

- K. Bartlett confirmed the meeting was duly noticed in accordance with state statutes for open meeting compliance.

**II. Roll Call**

Ram Bhatia	Present
William Duncan	Present
Ronald J. Frederick	Present
Susan Greenfield	Present
Bethany Ormseth	Excused
Scott Pierce	Present
Roger Zacharias	Present
Pamela Zenner-Richards	Present
Gary Olsen	Present

Also in attendance were Bryan Albrecht, Kelly Bartlett, Mary Harpe, and 20 citizens/reporters.

**III. Approval of Agenda**

- A. It was moved by S. Pierce, seconded by R. Zacharias and carried to approve the agenda.

**IV. Approval of Minutes**

- A. It was moved by R. Zacharias, seconded by P. Zenner-Richards and carried to approve the minutes of the June 18, 2015 Regular Meeting and July 13, 2015 Organizational Meeting.

**V. Citizen Comments**

- A. There were no citizen comments.

**VI. Chairperson's Report**

A. Appointment of Policy Review Committee

- Pamela Zenner-Richards, Scott Pierce, and William Duncan volunteered for the Policy Review Committee.
- Scott Pierce nominated Pamela Zenner-Richards to Chair the committee. Pamela Zenner-Richards accepted the nomination.

B. Board Meeting Evaluation Process

- The Board of Trustees review the prior evaluation form and discussed what they would like to see on the form in the future. Bryan Albrecht suggested more detail questions which will help improve the agenda for future Board Meetings. The Board approved the new evaluation form.

C. Revised Dashboard Template

- Bryan Albrecht suggested replacing the old dashboard report with a new simplified form highlighting enrollment and general fund operations. The Board of Trustees discussed a new layout for the

proposed simplified dashboard report. The employment box will be added to the personnel report in the Board Booklet.

D. President's Goals

- The Board of Trustees agreed that Bryan Albrecht's goals for the upcoming year are satisfactory.

**VII. President's Report**

A. Announcements –

- Journey Members in Attendance: Lauri Rogers
- Bryan Albrecht thanked the Trustees for all of their feedback on the Board Meeting Evaluation and Dashboard Report.
- Bryan Albrecht thanked the Gateway faculty and staff for creating and building a positive culture at Gateway.
- Debbie Davidson spoke on the Fast Pitch event that took place the evening before the Board Meeting. 43 people pitched ideas on entrepreneurship. They were judged and the top 10 presented to everyone in attendance. The top 4 received awards. Gary Krause received the top award for EKG Concepts and received \$5,000.
- Bryan Albrecht announced the Jeff Robshaw's son Jack Robshaw was attending the Board Meeting and working on his merit badge. Jack is working his way towards becoming an Eagle Scout.
- The ELC Retreat took place on August 19. Bryan mentioned it was a great day of ideas and elevating leadership and teamwork. Bill Whyte gave a reflection of the day at Colerget Conference Center. Bill said the setting was perfect for the retreat. There was an interesting mix of self-reflection and business. The retreat gave the ELC an opportunity to know each other better and work better together as a team.

B. Summer Camps

- Jane Finkenbine and Greg Herker presented on 2015 Middle School Summer Camps. Jane mentioned this is the second year of running summer camps. There were a great mix of kids this year and they were excited they got to participate in summer camps. Many of the kids had so much fun that they didn't want to leave at the end of camp. Many were asking for the camps to run an extra week.
- 2015 Summer Camps included: Fun with Forensics, Kenosha Campus, 13 participants; Kids in the Kitchen, Racine Campus, 15 participants; Maker Camp, iMET Center, 12 participants; Fun with Graphics and Design, iMET Center, 12 participants.
- Plans for Summer 2016: Expand our Summer Camp options and increase number of participants. Brochures will go out to schools and parents by January 11, 2016. Greater variety of themes. Greater variety of times. Offerings on all campuses.

C. Starrett Partnership

- Greg Chapman presented on Starrett Partnership. Greg is an instructor at Gateway and completed the certification to lead the certification program. Starrett is the first USA manufacturer in measuring equipment and has been in business for 135 years.
- Precision Measurement Instruments Certification: 1) tape and rule measurement, 2) slide caliper measurement, 3) gauge measurement, 4) angle measurement, 5) micrometer measurement, 6) dial indicator and bore gauge measurement.
- The certification training includes: safety, terms, design/features/technology, field validation, application and usage, maintenance, and test of knowledge.
- Greg mentioned that this training is only available due to partnerships. Gateway has many strong partnerships within the community.

**VIII. Operational Agenda**

A. Action Agenda

1. **Resolution No. F-2015-2016B.2 – Resolution Awarding the Sale of \$1,500,000 General Obligation Promissory Notes, Series 2015-2016B**

The Administration is recommending Board approval of a resolution awarding the sale of \$1,500,000 of General Obligation Promissory Notes, Series 2015-2016B; \$1,100,000 for the public purpose of financing building remodeling and improvement projects; \$400,000 for the public purpose of financing the construction of building additions or enlargements at the Elkhorn Campus.

Following discussion it was moved by R. Frederick, seconded by R. Zacharias and carried to approve Resolution No. F-2015-2016B.2 – Resolution Awarding the Sale of \$1,500,000 General Obligation Promissory Notes, Series F-2015-2016B.

Aye: 8  
Nay: 0  
Absent: 1

2. **Resolution No. F-2015-2016C.1 – Resolution Authorizing the Issuance of \$1,000,000 General Obligation Promissory Notes, Series 2015-2016C**

The administration is recommending approval to issue General Obligation Promissory Notes, Series 2015-2016C; in the principal amount of \$1,000,000 for the public purpose of financing building remodeling and improvement projects. This borrowing is included in the 2015-16 budget. Upon approval, appropriate legal notices will be published in the official district newspapers.

Following discussion it was moved by R. Zacharias, seconded by W. Duncan and carried to approve Resolution No. F-2015-2016C.1 – Resolution Authorizing the Issuance of \$1,000,000 General Obligation Promissory Notes, Series 2015-2016C .

Aye: 8  
Nay: 0  
Absent: 1

B. **Consent Agenda**

It was moved by P. Zenner-Richards, seconded S. Greenfield and carried that the following items in the consent agenda be approved:

1. **Finance**
  - a) **Financial Statement and Expenditures over \$2,500:** Approved the financial statement and expenditures as of July 31, 2015.
  - b) **Cash and Investment Schedules:** Approved the monthly cash reconciliation, investment schedule and investment report.
2. **Personnel Report:** Approved the personnel report of five (5) new hires; three (3) limited term; seven (7) promotions; six (6) resignations; one (1) termination; no employment approvals-casual, non-instructional; and no employment approvals-adjunct faculty.
3. **Grants Awards:** Approved the Grants – August 2015
4. **Contracts for Instructional Delivery:** Approved the contracts for instructional delivery report for July 2015
5. **Advisory Committee Activity Report:** Approved the advisory committee 2014-2015 meeting schedule and new members as of August 1, 2015
6. **Approval of BID:** Approved Bid No. 1482

## IX. Policy Governance Monitoring Reports

### A. Ends Statement Monitoring

1. End Statement #1 – **Gateway provides** academic programs and services that meet the current and future postsecondary technical education needs of our tri-community and assists in the preparation and transition of all learners. *Enrollment Management – Z. Haywood, S. Sklba, S. Riley, A. Becerra-Chvilicek*
  - Interpretation – Planning and managing enrollment from recruitment to student retention involves strategic planning and continuous improvement in order to meet the current and future needs of our tri-county community.
  - Student Services Vision: Students confidently navigate their educational journey through meaningful connections with staff and recognize the Student Success Division as a welcoming and caring partner in their development.
  - What's Ongoing: 'New' Student Services Model – 3 years old!, Contact Center – 3 years old!, Admissions Processing – 24-48 hour!, Financial Aid Processing – Up-to-Date!, New Student Specialist, Combined adult and high school team – 1 year, Increase emphasis on middle school, Recruiter – 1 year old!, SALT Financial Literacy
  - Process Improvements: VA Kaizen – Scope: Create a streamlined Veteran Education Benefits process to allow for reduced audit findings, improved customer service and a seamless work environment. Petitioning – Black Belt Project.
  - VA Audits – 2015: Elkhorn – no finding; Racine – 3 findings; Kenosha – waiting for final report.
  - Process Improvements – Petitioning: Project Goals – agree upon petition requirements, remove unnecessary/duplicate requirements, automate processing; significantly reduce manual processing time, transparent for students and staff
  - Technology: Student Video Kiosk – Burlington Center – students experience as close to in-person as possible, high quality cameras allow for identity verification, direct connection to contact center, printer, fax, and scanning available; Student Self-Service Tools – Replace WA components; Ellucian Portal – starting point for students and staff; Ellucian Mobile.
  - Recruitment Initiatives: Adult Recruitment – Get Ready Sessions, Walk-in Availability, All Things Admissions Related, New Student Orientation, Outreach Initiatives. High School Recruitment – Get Ready Sessions, Open Houses, Campus Tours, National Signing Day, On-site Testing, On-site Registration Days.
  - Get Ready Session – over 500 information sessions offered to new students, 4-6 sessions offered on each campus each week, each session holds 10-15 students, 1900 new students participated in the sessions.
  - Get Ready Session in High School – conducting information sessions in the classroom at the high schools, provide students an opportunity to come to open lab and sign up for Gateway.
  - Campus Tours – hosted over 30 high school tours, hosted 11 middle school tours, total over 500 students on tours this year
  - High School Open House – first high school focused Open House held on 4/28 and serviced over 100 students, will continue to hold twice a year; one in October and one in April to attract Juniors and Seniors to Gateway.
  - On-Site Testing and Registration – hosted on-site COMPASS testing at the high schools, tested over 150 students in there high school, hosted registration events at the high school, registered over 200 students for Summer and Fall classes.
  - National Signing Day – over 55 students and guests showed up to sign their commitment to Gateway Technical College, over 12 high schools participated in the event.
  - New Student Orientation – rolled out the New Student Orientations, served over 500 new students at all 3 campus locations, now at least 1 NSO will be held at each campus every term.



- Retention – What is the HLC Persistence and Completion Academy: Collaborative learning opportunity led by the HLC staff and senior scholars, Cohort of institutions of higher education participating in learning and quality improvement activities, Online community of participants sharing progress, challenges, questions, and best practices, Fulfilling the quality initiative requirement for years 5-9 of Open Pathway accreditation process
- What we are doing - Year One (2014-15) focus was on organizing and interpreting our student data, Years Two-Four (2015-2018) focus will be on designing interventions to improve persistence and completion, On-going online collaboration and two face-to-face events with cohort colleges.
- Target Student Population – Perkins Cohorts - Student accepted to a program and 12 postsecondary credits completed, Students in Remediation - Students required to take remedial reading, writing, or math courses, Online Students - Students in the 6 fully online programs (also considering examining just online course takers).
- Data Projects - Data Dictionary, DFW Course Report, Student Intent Data, Use of Student Support Services, Remedial Course-taking Behavior, Leaver Data, Online Target Group, Non-cognitive Factor Survey
- Enrollment Task Force – Provost, VP Community & Government Relations, Associate VP Student Success, 2 Deans, 2 Marketing Faculty, 2 Marketing Staff, 2 Student Success Staff, 1 Academic Advisor
- Charge – Develop a short-term and long-term plan for continuous FTE growth - Deepen the brand with all of the constituency groups we serve, Reduce barriers for HS students to access Gateway, Invest in program marketing where the job market is strong and we have open seats, Budget: \$200,000
- H. S. data - 2013 & 2014 HS graduates enrolled at Gateway - program and H.S., Report indicating Gateway district students going out of district, Program Performance Report, EMSI regional labor market reports, Student Success Reports, Ideas from everywhere!
- Initiatives Completed - \$500 drawing, \$30 VIP cards, Call Nights, Smartsheet/Calendar, National Signing Day for High School Students, Middle School Event, Yo Puedo – Hispanic High School Student & Parent Event; Elkhorn, Financial Aid Nights, ELL/ABE Transition Workshops, FAFSAs, ACT scores received, <6 credits remaining, July “Gateway Rocks” Open Houses, Education Advisory Board Membership
- Step into Your Future Event – Juniors/Seniors, College Wide Call Nights – Madigrano – August, 2015, October, 2015, December 2015
- Projects Planned - HS communications track – hire staff writer, Deepening the Brand, Recognition program for program advisors Spring 2016, Alumni events, Transcribed Credit Care Pkg., Establish system for review & determination of programs for marketing focus, Include NSS with academic advisors, Transcribed Credit event in October 2015, meet the needs of the working adult, potential new markets, broaden the committee

Following discussion, it was moved by R. Bhatia, seconded by P. Zenner-Richards and carried that this report is evidence that the college is making progress on Ends Statement #1.

#### X. Board Member Community Reports

- William Duncan attended the Prairie Party in Elkhorn and mentioned the event was very well organized.
- Gary Olsen and Beth Ormseth attended the Chrysler announcement. Gary mentioned that the amount of energy was amazing and that Nick Pinchuk is an unbelievable speaker and speaks from his heart.

#### XI. Next Meeting Date and Adjourn

- A. Regular Meeting – Thursday, September 17, 2015, 8:00 am, Kenosha Campus

DRAFT

B. At approximately 9:35 a.m. it was moved by R. Zacharias, seconded by R. Bhatia and carried that the meeting was adjourned.

Submitted by,

Susan Greenfield  
Secretary

V. CITIZEN COMMENTS

- A. The Gateway Technical College District Board has established a limit of thirty minutes for citizen comments. Individuals will be limited to three to five minutes for their comments depending on the number of individuals who wish to address the Board. Citizens wishing to address the Board are to sign up prior to the meeting on the forms provided at the entrance to the meeting room.

- VI. COMMITTEE OF THE WHOLE
  - A. Board of Trustees Group Photo
  - B. Strengths and Team Building

# GATEWAY TECHNICAL COLLEGE DISTRICT BOARD

Roll Call	_____
Action	_____
Information	<u>  X  </u>
Discussion	_____

## COMMITTEE OF THE WHOLE Board of Trustees Group Photo

# GATEWAY TECHNICAL COLLEGE DISTRICT BOARD

Roll Call \_\_\_\_\_  
Action \_\_\_\_\_  
Information   X    
Discussion \_\_\_\_\_

## COMMITTEE OF THE WHOLE Strengths and Team Building

- VII. CHAIRPERSON'S REPORT
  - A. End Statement Committee Report
  - B. Board Evaluation Summary
  - C. District Boards Association Report – Layla Merrifield

# GATEWAY TECHNICAL COLLEGE DISTRICT BOARD

Roll Call \_\_\_\_\_  
Action \_\_\_\_\_  
Information   X    
Discussion \_\_\_\_\_

## CHAIRPERSON'S REPORT End Statement Committee Report

Governance Process:  
Board Liaison:

Policy 1.2 – Governing Philosophy  
Gary Olsen



# GATEWAY TECHNICAL COLLEGE DISTRICT BOARD

Roll Call \_\_\_\_\_  
Action \_\_\_\_\_  
Information   X    
Discussion \_\_\_\_\_

## CHAIRPERSON'S REPORT Board Evaluation Summary

Governance Process:  
Board Liaison:

Policy 1.2 – Governing Philosophy  
Gary Olsen

# GATEWAY TECHNICAL COLLEGE DISTRICT BOARD

Roll Call \_\_\_\_\_  
Action \_\_\_\_\_  
Information   X    
Discussion \_\_\_\_\_

## CHAIRPERSON'S REPORT District Boards Association Report – Layla Merrifield

Governance Process:  
Board Liaison:

Policy 1.2 – Governing Philosophy  
Gary Olsen

- VIII. PRESIDENT'S REPORT
  - A. Announcements
  - B. State Board Meeting
  - C. Student Representative

# GATEWAY TECHNICAL COLLEGE DISTRICT BOARD

Roll Call \_\_\_\_\_  
Action \_\_\_\_\_  
Information   X    
Discussion \_\_\_\_\_

## **PRESIDENT'S REPORT** **Announcements**

Policy/Ends Statement:      Policy 2.1

# GATEWAY TECHNICAL COLLEGE DISTRICT BOARD

Roll Call \_\_\_\_\_  
Action \_\_\_\_\_  
Information   X    
Discussion \_\_\_\_\_

## PRESIDENT'S REPORT State Board Meeting

Policy/Ends Statement:      Policy 2.1

# GATEWAY TECHNICAL COLLEGE DISTRICT BOARD

Roll Call \_\_\_\_\_  
Action \_\_\_\_\_  
Information   X    
Discussion \_\_\_\_\_

## **PRESIDENT'S REPORT Student Representative**

Policy/Ends Statement:      Policy 2.1

IX. OPERATIONAL AGENDA

A. Action Agenda

1. FY 2014-2015 Budget Revision #5
2. Resolution No. F-2015-2016C.2 – Resolution Awarding the Sale of \$500,000 General Obligation Promissory Notes, Series 2015-2016C
3. Resolution B-2015 C.1 & C.2 Law Enforcement Academy Renovations, Academic Building, Kenosha Campus
4. Resolution B-2015 D.1 & D.2 Shooting Range Expansion, Academic Building, Kenosha Campus

# GATEWAY TECHNICAL COLLEGE DISTRICT BOARD

Roll Call       X    
 Action        \_\_\_  
 Information   \_\_\_  
 Discussion    \_\_\_

## FY 2014-2015 BUDGET REVISION #5

**Summary of Item:**

The administration is recommending approval to amend the fiscal year 2015 budget based on prior year results. Detail by fund is provided below:

**SPECIAL REVENUE FUND - OPERATIONAL**

Increase/(Decrease)

A budget revision is recommended to reflect the reallocation of expenditures based on fiscal year activity.

Uses

Instructional	\$ (3,000)
Physical Plant	600
Public Service	2,400

**CAPTIAL PROJECTS FUND - OPERATIONAL**

Increase/(Decrease)

A budget revision is recommended to reflect the reallocation of expenditures based on fiscal year activity.

Uses

General Institutional	\$ (94,000)
Physical Plant	94,000

**Attachment:**

FY 2014-2015 Budget Revision #5

**Ends Statements / Executive Limitations:**

Budgeting/Forecasting Policy 3.4, 6.

**Gateway Staff Liaison:**

Jason Nygard / Bane Thomey

**Roll Call**

Ram Bhatia	_____
William Duncan	_____
Ronald J. Frederick	_____
Susan Greenfield	_____
Bethany Ormseth	_____
Scott Pierce	_____
Roger Zacharias	_____
Pamela Zenner-Richards	_____
Gary Olsen	_____



**DISTRICT: GATEWAY**  
 09/17/15

**FUND: COMBINED**

<u>RESOURCES</u>	<b>CURRENT BUDGET ADOPTED 05/14/15</b>	<b>MODIFIED BUDGET ADOPTED 09/17/15</b>	<b>CHANGE</b>
DESIGNATED FUND BALANCE	-	-	
REVENUES			
TAX LEVY	\$ 28,778,925	\$ 28,778,925	\$ -
STATE AID	42,950,197	42,950,197	-
OTHER STATE	165,000	165,000	-
PROGRAM FEES	17,034,937	17,034,937	-
MATERIAL FEES	797,467	797,467	-
OTHER STUDENT FEES	3,199,974	3,199,974	-
INSTITUTIONAL	9,630,000	9,630,000	-
FEDERAL REVENUE	40,588,000	40,588,000	-
<b>TOTAL REVENUE</b>	<b>143,144,500</b>	<b>143,144,500</b>	<b>-</b>
OTHER FUNDING SOURCES			
PROCEEDS FROM DEBT	13,315,000	13,315,000	-
OPERATING TRANSFERS IN	730,000	730,000	-
TRANSFER FROM RESERVES	1,624,965	1,624,965	-
<b>TOTAL RESOURCES</b>	<b>\$ 158,814,465</b>	<b>\$ 158,814,465</b>	<b>\$ -</b>
 <b>USES</b>			
INSTRUCTION	\$ 61,330,136	\$ 61,327,136	\$ (3,000)
INSTR. RESOURCES	1,271,370	1,271,370	-
STUDENT SERVICES	57,079,749	57,079,749	-
GENERAL INSTITUTIONAL	11,254,783	11,160,783	(94,000)
PHYSICAL PLANT	26,813,427	26,908,027	94,600
AUXILIARY SERVICES	600,000	600,000	-
PUBLIC SERVICES	395,000	397,400	2,400
<b>TOTAL EXPENDITURES</b>	<b>158,744,465</b>	<b>158,744,465</b>	<b>-</b>
OTHER USES			
OPERATING TRANSFERS OUT	(430,000)	(430,000)	-
TRANSFER TO RESERVES	500,000	500,000	-
<b>TOTAL USES</b>	<b>\$ 158,814,465</b>	<b>\$ 158,814,465</b>	<b>\$ -</b>

**DISTRICT: GATEWAY**  
 09/17/15

**FUND: GENERAL**

<u>RESOURCES</u>	<b>CURRENT BUDGET ADOPTED 05/14/15</b>	<b>MODIFIED BUDGET ADOPTED 09/17/15</b>	<b>CHANGE</b>
DESIGNATED FUND BALANCE			
REVENUES			
TAX LEVY	\$ 17,047,925	\$ 17,047,925	\$ -
STATE AID	38,026,197	38,026,197	-
OTHER STATE	165,000	165,000	-
PROGRAM FEES	17,034,937	17,034,937	-
MATERIAL FEES	797,467	797,467	-
OTHER STUDENT FEES	2,052,974	2,052,974	-
FEDERAL REVENUE	30,000	30,000	-
INSTITUTIONAL	3,820,000	3,820,000	-
<b>TOTAL REVENUE</b>	<b>78,974,500</b>	<b>78,974,500</b>	<b>-</b>
OTHER FUNDING SOURCES			
PROCEEDS FROM DEBT			
OPERATING TRANSFERS - IN	-	-	-
TRANSFER FROM RESERVES	1,000,500	1,000,500	-
<b>TOTAL RESOURCES</b>	<b>\$ 79,975,000</b>	<b>\$ 79,975,000</b>	<b>\$ -</b>
<u>USES</u>			
INSTRUCTION	\$ 51,225,136	\$ 51,225,136	\$ -
INSTR. RESOURCES	1,248,370	1,248,370	-
STUDENT SERVICES	11,077,749	11,077,749	-
GENERAL INSTITUTIONAL	7,946,283	7,946,283	-
PHYSICAL PLANT	7,947,462	7,947,462	-
AUXILIARY SERVICES	-	-	-
PUBLIC SERVICES	-	-	-
<b>TOTAL EXPENDITURES</b>	<b>79,445,000</b>	<b>79,445,000</b>	<b>-</b>
OTHER USES			
OPERATING TRANSFERS - OUT	150,000	150,000	-
TRANSFER TO RESERVES	380,000	380,000	-
<b>TOTAL USES</b>	<b>\$ 79,975,000</b>	<b>\$ 79,975,000</b>	<b>\$ -</b>

**DISTRICT: GATEWAY**  
 09/17/15

**FUND: SPECIAL REVENUE - OPERATIONAL FUND**

<u>RESOURCES</u>	<b>CURRENT BUDGET ADOPTED 05/14/15</b>	<b>MODIFIED BUDGET ADOPTED 09/17/15</b>	<b>CHANGE</b>
DESIGNATED FUND BALANCE			
REVENUES			
TAX LEVY	\$ 2,086,000	\$ 2,086,000	\$ -
STATE AID	2,284,000	2,284,000	-
PROGRAM FEES			
MATERIAL FEES			
OTHER STUDENT FEES			
FEDERAL REVENUE	4,389,000	4,389,000	-
INSTITUTIONAL	462,000	462,000	-
<b>TOTAL REVENUE</b>	<b>9,221,000</b>	<b>9,221,000</b>	<b>-</b>
OTHER FUNDING SOURCES			
PROCEEDS FROM DEBT			
OPERATING TRANSFERS - IN			
TRANSFER FROM RESERVES	(580,000)	(580,000)	-
<b>TOTAL RESOURCES</b>	<b>\$ 8,641,000</b>	<b>\$ 8,641,000</b>	<b>\$ -</b>
<b><u>USES</u></b>			
INSTRUCTION	\$ 5,831,000	\$ 5,828,000	\$ (3,000)
INSTR. RESOURCES			
STUDENT SERVICES	2,179,000	2,179,000	-
GENERAL INSTITUTIONAL	844,000	844,000	-
PHYSICAL PLANT	32,000	32,600	600
AUXILIARY SERVICES	-	-	-
PUBLIC SERVICES	335,000	337,400	2,400
<b>TOTAL EXPENDITURES</b>	<b>9,221,000</b>	<b>9,221,000</b>	<b>-</b>
OTHER USES			
OPERATING TRANSFERS - OUT	(580,000)	(580,000)	-
TRANSFER TO RESERVES	-	-	-
<b>TOTAL USES</b>	<b>\$ 8,641,000</b>	<b>\$ 8,641,000</b>	<b>\$ -</b>

DISTRICT: GATEWAY  
 09/17/15

**FUND: SPECIAL REVENUE - NON AIDABLE**

<u>RESOURCES</u>	CURRENT BUDGET ADOPTED 05/14/15	MODIFIED BUDGET ADOPTED 09/17/15	CHANGE
DESIGNATED FUND BALANCE			
REVENUES			
TAX LEVY			
STATE AID	\$ 2,570,000	\$ 2,570,000	\$ -
PROGRAM FEES	-	-	-
MATERIAL FEES	-	-	-
OTHER STUDENT FEES	887,000	887,000	-
INSTITUTIONAL	4,948,000	4,948,000	-
FEDERAL REVENUE	36,099,000	36,099,000	-
<b>TOTAL REVENUE</b>	<b>44,504,000</b>	<b>44,504,000</b>	<b>-</b>
OTHER FUNDING SOURCES			
PROCEEDS FROM DEBT			
OPERATING TRANSFERS - IN			
TRANSFER FROM RESERVES			
<b>TOTAL RESOURCES</b>	<b>\$ 44,504,000</b>	<b>\$ 44,504,000</b>	<b>\$ -</b>
 <u>USES</u>			
INSTRUCTION			
INSTR. RESOURCES			
STUDENT SERVICES	\$ 43,753,000	\$ 43,753,000	\$ -
GENERAL INSTITUTIONAL	751,000	751,000	-
PHYSICAL PLANT			
AUXILIARY SERVICES			
PUBLIC SERVICES			
<b>TOTAL EXPENDITURES</b>	<b>44,504,000</b>	<b>44,504,000</b>	<b>-</b>
OTHER USES			
OPERATING TRANSFERS - OUT	-	-	-
TRANSFER TO RESERVES			
<b>TOTAL USES</b>	<b>\$ 44,504,000</b>	<b>\$ 44,504,000</b>	<b>\$ -</b>

**DISTRICT: GATEWAY**  
 09/17/15

**FUND: CAPITAL PROJECTS**

<u>RESOURCES</u>	<b>CURRENT BUDGET ADOPTED 05/14/15</b>	<b>MODIFIED BUDGET ADOPTED 09/17/15</b>	<b>CHANGE</b>
DESIGNATED FUND BALANCE			
REVENUES			
TAX LEVY-(TIF Refund)	\$ -	\$ -	\$ -
STATE AID	70,000	70,000	-
PROGRAM FEES			
MATERIAL FEES			
OTHER STUDENT FEES			
FEDERAL REVENUE	70,000	70,000	-
INSTITUTIONAL	100,000	100,000	-
<b>TOTAL REVENUE</b>	<b>240,000</b>	<b>240,000</b>	<b>-</b>
OTHER FUNDING SOURCES			
PROCEEDS FROM DEBT	13,000,000	13,000,000	-
OPERATING TRANSFERS - IN	730,000	730,000	-
TRANSFER FROM RESERVES	1,204,465	1,204,465	-
<b>TOTAL RESOURCES</b>	<b>\$ 15,174,465</b>	<b>\$ 15,174,465</b>	<b>\$ -</b>
 <u>USES</u>			
INSTRUCTION	\$ 4,274,000	\$ 4,274,000	\$ -
INSTR. RESOURCES	23,000	23,000	-
STUDENT SERVICES	70,000	70,000	-
GENERAL INSTITUTIONAL	1,713,500	1,619,500	(94,000)
PHYSICAL PLANT	9,033,965	9,127,965	94,000
AUXILIARY SERVICES			
PUBLIC SERVICES	60,000	60,000	-
<b>TOTAL EXPENDITURES</b>	<b>15,174,465</b>	<b>15,174,465</b>	<b>-</b>
OTHER USES			
OPERATING TRANSFERS - OUT			
TRANSFER TO RESERVES	-	-	-
<b>TOTAL USES</b>	<b>\$ 15,174,465</b>	<b>\$ 15,174,465</b>	<b>\$ -</b>

**DISTRICT: GATEWAY**  
 09/17/15

**FUND: DEBT SERVICE**

<u>RESOURCES</u>	<b>CURRENT BUDGET ADOPTED 05/14/15</b>	<b>MODIFIED BUDGET ADOPTED 09/17/15</b>	<b>CHANGE</b>
DESIGNATED FUND BALANCE			
REVENUES			
TAX LEVY	\$ 9,600,000	\$ 9,600,000	\$ -
STATE AID			
OTHER STATE			
PROGRAM FEES			
MATERIAL FEES			
OTHER STUDENT FEES			
INSTITUTIONAL	5,000	5,000	-
FEDERAL REVENUE			
<b>TOTAL REVENUE</b>	<b>9,605,000</b>	<b>9,605,000</b>	<b>-</b>
OTHER FUNDING SOURCES			
PROCEEDS FROM DEBT	315,000	315,000	
OPERATING TRANSFERS - IN			
TRANSFER FROM RESERVES			
<b>TOTAL RESOURCES</b>	<b>\$ 9,920,000</b>	<b>\$ 9,920,000</b>	<b>\$ -</b>
<b><u>USES</u></b>			
INSTRUCTION			
INSTR. RESOURCES			
STUDENT SERVICES			
GENERAL INSTITUTIONAL			
PHYSICAL PLANT	\$ 9,800,000	\$ 9,800,000	\$ -
AUXILIARY SERVICES			
PUBLIC SERVICES			
<b>TOTAL EXPENDITURES</b>	<b>9,800,000</b>	<b>9,800,000</b>	<b>-</b>
OTHER USES			
OPERATING TRANSFERS - OUT			
TRANSFER TO RESERVES	120,000	120,000	-
<b>TOTAL USES</b>	<b>\$ 9,920,000</b>	<b>\$ 9,920,000</b>	<b>\$ -</b>

**DISTRICT: GATEWAY**  
 09/17/15

**FUND: ENTERPRISE FUND**

<u>RESOURCES</u>	<b>CURRENT BUDGET ADOPTED 05/14/15</b>	<b>MODIFIED BUDGET ADOPTED 09/17/15</b>	<b>CHANGE</b>
DESIGNATED FUND BALANCE			
REVENUES			
TAX LEVY	\$ 45,000	\$ 45,000	\$ -
STATE AID			
PROGRAM FEES			
MATERIAL FEES			
OTHER STUDENT FEES	260,000	260,000	-
INSTITUTIONAL	295,000	295,000	-
FEDERAL REVENUE			
<b>TOTAL REVENUE</b>	<b>600,000</b>	<b>600,000</b>	<b>-</b>
OTHER FUNDING SOURCES			
PROCEEDS FROM DEBT			
OPERATING TRANSFERS - IN			
TRANSFER FROM RESERVES			
<b>TOTAL RESOURCES</b>	<b>\$ 600,000</b>	<b>\$ 600,000</b>	<b>\$ -</b>
 <u>USES</u>			
INSTRUCTION			
INSTR. RESOURCES			
STUDENT SERVICES			
GENERAL INSTITUTIONAL			
PHYSICAL PLANT			
AUXILIARY SERVICES	\$ 600,000	\$ 600,000	\$ -
PUBLIC SERVICES			
<b>TOTAL EXPENDITURES</b>	<b>600,000</b>	<b>600,000</b>	<b>-</b>
OTHER USES			
OPERATING TRANSFERS - OUT	\$ -	\$ -	-
TRANSFER TO RESERVES	-	-	-
<b>TOTAL USES</b>	<b>\$ 600,000</b>	<b>\$ 600,000</b>	<b>\$ -</b>

**GATEWAY TECHNICAL COLLEGE DISTRICT BOARD**

Roll Call        x    
Action                 
Information            
Discussion           

**RESOLUTION NO. F-2015-2016C.2  
RESOLUTION AWARDING THE SALE OF  
\$500,000 GENERAL OBLIGATION PROMISSORY NOTES,  
SERIES 2015-2016C**

Summary of Item:        The administration is recommending Board approval of a resolution awarding the sale of \$500,000 of General Obligation Promissory Notes, Series 2015-2016C for the public purpose of financing building remodeling and improvement projects.

The actual sale will take place at the Board meeting. This debt issue is included in the Board-approved budget for FY 2016.



Attachments:            *Draft* Resolution No. F-2015-2016C.2

Ends Statements and/or  
Executive Limitations: Section 3 - Executive Limitations  
Policy 3.5 - Financial Condition

Staff Liaison:         Bane Thomey

**ROLL CALL**

Ram Bhatia	_____	Scott Pierce	_____
William Duncan	_____	Roger Zacharias	_____
Ronald J. Frederick	_____	Pamela Zenner-Richards	_____
Susan Greenfield	_____	Gary Olsen	_____
Bethany Ormseth	_____		



RESOLUTION NO. 2015-2016C.2

RESOLUTION AWARDING THE SALE OF  
\$500,000 GENERAL OBLIGATION PROMISSORY NOTES, SERIES 2015-2016C

WHEREAS, the District Board of Gateway Technical College District, Racine, Kenosha and Walworth Counties, Wisconsin (the "District") has, by a resolution adopted August 20, 2015 (the "Authorizing Resolution"), authorized the issuance of General Obligation Promissory Notes, Series 2015-2016C (the "Notes"), pursuant to Section 67.12(12) of the Wisconsin Statutes, in the amount of \$1,000,000 for the public purpose of financing building remodeling and improvement projects (the "Project");

WHEREAS, the Secretary of the District caused Notices to Electors to be published in The Kenosha News and the Journal Times on August 26, 2015 and the Elkhorn Independent on August 27, 2015 giving notice of adoption of the Authorizing Resolution, identifying where and when the Authorizing Resolution could be inspected, and advising electors of their right to petition for a referendum on the question of the issuance of the Notes;

WHEREAS, no petition for referendum has been filed with the Secretary and the time to file such a petition will expire on September 28, 2015;

WHEREAS, the District has determined to issue \$500,000 in principal amount of the Notes authorized by the Authorizing Resolution at this time; and

WHEREAS, it is the finding of the District Board that it is necessary, desirable and in the best interest of the District to sell the Notes to Robert W. Baird & Co. Incorporated (the "Purchaser"), pursuant to the terms and conditions of its note purchase proposal attached hereto as Exhibit A and incorporated herein by this reference (the "Proposal").

NOW, THEREFORE, BE IT RESOLVED by the District Board of the District that:

Section 1. Sale of the Notes. The Proposal is hereby accepted (subject to the condition that no valid petition for a referendum is filed by September 28, 2015 with respect to the Notes), and the Chief Financial Officer/Vice President Finance and Administration or other appropriate officer or officers of the District are authorized and directed to execute an acceptance of the Proposal on behalf of the District. To evidence the obligation of the District, the Chairperson and Secretary are hereby authorized, empowered and directed to make, execute, issue and sell to the Purchaser for, on behalf of and in the name of the District, the Notes aggregating the principal amount of FIVE HUNDRED THOUSAND DOLLARS (\$500,000) for the sum set forth on the Proposal, plus accrued interest to the date of delivery.

Section 2. Terms of the Notes. The Notes shall be designated "General Obligation Promissory Notes, Series 2015-2016C"; shall be issued in the aggregate principal amount of \$500,000; shall be dated October 8, 2015; shall be in the denomination of \$5,000 or any integral multiple thereof; shall be numbered R-1 and upward; and shall bear interest at the rates per annum and mature on April 1 of each year, in the years and principal amounts as set forth on the Pricing Summary attached hereto as Exhibit B-1 and incorporated herein by this reference. Interest shall be payable semi-annually on April 1 and October 1 of each year commencing on April 1, 2016. Interest shall be computed upon the basis of a 360-day year of twelve 30-day months and will be

rounded pursuant to the rules of the Municipal Securities Rulemaking Board. The schedule of principal and interest payments due on the Notes is set forth on the Debt Service Schedule attached hereto as Exhibit B-2 and incorporated herein by this reference (the "Schedule").

Section 3. Redemption Provisions. The Notes shall not be subject to optional redemption.

Section 4. Form of the Notes. The Notes shall be issued in registered form and shall be executed and delivered in substantially the form attached hereto as Exhibit C and incorporated herein by this reference.

Section 5. Tax Provisions.

(A) Direct Annual Irrepealable Tax Levy. For the purpose of paying the principal of and interest on the Notes as the same becomes due, the full faith, credit and resources of the District are hereby irrevocably pledged, and there is hereby levied upon all of the taxable property of the District a direct annual irrepealable tax in the years 2015 through 2018 for the payments due in the years 2016 through 2019 in the amounts set forth on the Schedule.

(B) Tax Collection. So long as any part of the principal of or interest on the Notes remains unpaid, the District shall be and continue without power to repeal such levy or obstruct the collection of said tax until all such payments have been made or provided for. After the issuance of the Notes, said tax shall be, from year to year, carried onto the tax roll of the District and collected in addition to all other taxes and in the same manner and at the same time as other taxes of the District for said years are collected, except that the amount of tax carried onto the tax roll may be reduced in any year by the amount of any surplus money in the Debt Service Fund Account created below.

(C) Additional Funds. If at any time there shall be on hand insufficient funds from the aforesaid tax levy to meet principal and/or interest payments on said Notes when due, the requisite amounts shall be paid from other funds of the District then available, which sums shall be replaced upon the collection of the taxes herein levied.

Section 6. Segregated Debt Service Fund Account.

(A) Creation and Deposits. There be and there hereby is established in the treasury of the District, if one has not already been created, a debt service fund, separate and distinct from every other fund, which shall be maintained in accordance with generally accepted accounting principles. Debt service or sinking funds established for obligations previously issued by the District may be considered as separate and distinct accounts within the debt service fund.

Within the debt service fund, there hereby is established a separate and distinct account designated as the "Debt Service Fund Account for \$500,000 General Obligation Promissory Notes, Series 2015-2016C" (the "Debt Service Fund Account") and such account shall be maintained until the indebtedness evidenced by the Notes is fully paid or otherwise extinguished. The District Treasurer shall deposit in the Debt Service Fund Account (i) all accrued interest received by the District at the time of delivery of and payment for the Notes; (ii) any premium which may be received by the District above the par value of the Notes and accrued interest thereon; (iii) all money raised by the taxes herein levied and any amounts appropriated for the specific purpose of meeting principal of and interest on the Notes when due; (iv) such other sums

as may be necessary at any time to pay principal of and interest on the Notes when due; (v) surplus monies in the Borrowed Money Fund as specified below; and (vi) such further deposits as may be required by Section 67.11, Wisconsin Statutes.

(B) Use and Investment. No money shall be withdrawn from the Debt Service Fund Account and appropriated for any purpose other than the payment of principal of and interest on the Notes until all such principal and interest has been paid in full and the Notes canceled; provided (i) the funds to provide for each payment of principal of and interest on the Notes prior to the scheduled receipt of taxes from the next succeeding tax collection may be invested in direct obligations of the United States of America maturing in time to make such payments when they are due or in other investments permitted by law; and (ii) any funds over and above the amount of such principal and interest payments on the Notes may be used to reduce the next succeeding tax levy, or may, at the option of the District, be invested by purchasing the Notes as permitted by and subject to Section 67.11(2)(a), Wisconsin Statutes, or in permitted municipal investments under the pertinent provisions of the Wisconsin Statutes ("Permitted Investments"), which investments shall continue to be a part of the Debt Service Fund Account. Any investment of the Debt Service Fund Account shall at all times conform with the provisions of the Internal Revenue Code of 1986, as amended (the "Code") and any applicable Treasury Regulations (the "Regulations").

(C) Remaining Monies. When all of the Notes have been paid in full and canceled, and all Permitted Investments disposed of, any money remaining in the Debt Service Fund Account shall be transferred and deposited in the general fund of the District, unless the District Board directs otherwise.

Section 7. Proceeds of the Notes; Segregated Borrowed Money Fund. The proceeds of the Notes (the "Note Proceeds") (other than any premium and accrued interest which must be paid at the time of the delivery of the Notes into the Debt Service Fund Account created above) shall be deposited into a special fund separate and distinct from all other funds of the District and disbursed solely for the purpose for which borrowed or for the payment of the principal of and the interest on the Notes. Monies in the Borrowed Money Fund may be temporarily invested in Permitted Investments. Any monies, including any income from Permitted Investments, remaining in the Borrowed Money Fund after the purpose for which the Notes have been issued has been accomplished, and, at any time, any monies as are not needed and which obviously thereafter cannot be needed for such purpose shall be deposited in the Debt Service Fund Account.

Section 8. No Arbitrage. All investments made pursuant to this Resolution shall be Permitted Investments, but no such investment shall be made in such a manner as would cause the Notes to be "arbitrage bonds" within the meaning of Section 148 of the Code or the Regulations and an officer of the District, charged with the responsibility for issuing the Notes, shall certify as to facts, estimates, circumstances and reasonable expectations in existence on the date of delivery of the Notes to the Purchaser which will permit the conclusion that the Notes are not "arbitrage bonds," within the meaning of the Code or Regulations.

Section 9. Compliance with Federal Tax Laws. (a) The District represents and covenants that the projects financed by the Notes and the ownership, management and use of the projects will not cause the Notes to be "private activity bonds" within the meaning of Section 141 of the Code. The District further covenants that it shall comply with the provisions of the Code to the extent necessary to maintain the tax-exempt status of the interest on the Notes including, if applicable, the

rebate requirements of Section 148(f) of the Code. The District further covenants that it will not take any action, omit to take any action or permit the taking or omission of any action within its control (including, without limitation, making or permitting any use of the proceeds of the Notes) if taking, permitting or omitting to take such action would cause any of the Notes to be an arbitrage bond or a private activity bond within the meaning of the Code or would otherwise cause interest on the Notes to be included in the gross income of the recipients thereof for federal income tax purposes. The Secretary or other officer of the District charged with the responsibility of issuing the Notes shall provide an appropriate certificate of the District certifying that the District can and covenanting that it will comply with the provisions of the Code and Regulations.

(b) The District also covenants to use its best efforts to meet the requirements and restrictions of any different or additional federal legislation which may be made applicable to the Notes provided that in meeting such requirements the District will do so only to the extent consistent with the proceedings authorizing the Notes and the laws of the State of Wisconsin and to the extent that there is a reasonable period of time in which to comply.

Section 10. Execution of the Notes; Closing; Professional Services. The Notes shall be issued in printed form, executed on behalf of the District by the manual or facsimile signatures of the Chairperson and Secretary, authenticated, if required, by the Fiscal Agent (defined below), sealed with its official or corporate seal, if any, or a facsimile thereof, and delivered to the Purchaser upon payment to the District of the purchase price thereof, plus accrued interest to the date of delivery (the "Closing"). The facsimile signature of either of the officers executing the Notes may be imprinted on the Notes in lieu of the manual signature of the officer but, unless the District has contracted with a fiscal agent to authenticate the Notes, at least one of the signatures appearing on each Note shall be a manual signature. In the event that either of the officers whose signatures appear on the Notes shall cease to be such officers before the Closing, such signatures shall, nevertheless, be valid and sufficient for all purposes to the same extent as if they had remained in office until the Closing. The aforesaid officers are hereby authorized and directed to do all acts and execute and deliver the Notes and all such documents, certificates and acknowledgements as may be necessary and convenient to effectuate the Closing. The District hereby authorizes the officers and agents of the District to enter into, on its behalf, agreements and contracts in conjunction with the Notes, including but not limited to agreements and contracts for legal, trust, fiscal agency, disclosure and continuing disclosure, and rebate calculation services. Any such contract heretofore entered into in conjunction with the issuance of the Notes is hereby ratified and approved in all respects.

Section 11. Payment of the Notes; Fiscal Agent. The principal of and interest on the Notes shall be paid by the District Secretary or District Treasurer (the "Fiscal Agent").

Section 12. Persons Treated as Owners; Transfer of Notes. The District shall cause books for the registration and for the transfer of the Notes to be kept by the Fiscal Agent. The person in whose name any Note shall be registered shall be deemed and regarded as the absolute owner thereof for all purposes and payment of either principal or interest on any Note shall be made only to the registered owner thereof. All such payments shall be valid and effectual to satisfy and discharge the liability upon such Note to the extent of the sum or sums so paid.

Any Note may be transferred by the registered owner thereof by surrender of the Note at the office of the Fiscal Agent, duly endorsed for the transfer or accompanied by an assignment duly executed by the registered owner or his attorney duly authorized in writing. Upon such transfer, the Chairperson and Secretary shall execute and deliver in the name of the transferee or

transferees a new Note or Notes of a like aggregate principal amount, series and maturity and the Fiscal Agent shall record the name of each transferee in the registration book. No registration shall be made to bearer. The Fiscal Agent shall cancel any Note surrendered for transfer.

The District shall cooperate in any such transfer, and the Chairperson and Secretary are authorized to execute any new Note or Notes necessary to effect any such transfer.

Section 13. Record Date. The fifteenth day of each calendar month next preceding each interest payment date shall be the record date for the Notes (the "Record Date"). Payment of interest on the Notes on any interest payment date shall be made to the registered owners of the Notes as they appear on the registration book of the District at the close of business on the Record Date.

Section 14. Utilization of The Depository Trust Company Book-Entry-Only System. In order to make the Notes eligible for the services provided by The Depository Trust Company, New York, New York ("DTC"), the District agrees to the applicable provisions set forth in the Blanket Issuer Letter of Representations previously executed on behalf of the District and on file in the District office.

Section 15. Official Statement. The District Board hereby approves the Preliminary Official Statement with respect to the Notes and deems the Preliminary Official Statement as "final" as of its date for purposes of SEC Rule 15c2-12 promulgated by the Securities and Exchange Commission pursuant to the Securities and Exchange Act of 1934 (the "Rule"). All actions taken by officers of the District in connection with the preparation of such Preliminary Official Statement and any addenda to it or Final Official Statement are hereby ratified and approved. In connection with the Closing, the appropriate District official shall certify the Preliminary Official Statement and any addenda or Final Official Statement. The Secretary shall cause copies of the Preliminary Official Statement and any addenda or Final Official Statement to be distributed to the Purchaser.

Section 16. Undertaking to Provide Continuing Disclosure. The District hereby covenants and agrees, for the benefit of the owners of the Notes, to enter into a written undertaking (the "Undertaking") if required by the Rule to provide continuing disclosure of certain financial information and operating data and timely notices of the occurrence of certain events in accordance with the Rule. The Undertaking shall be enforceable by the owners of the Notes or by the Purchaser on behalf of such owners (provided that the rights of the owners and the Purchaser to enforce the Undertaking shall be limited to a right to obtain specific performance of the obligations thereunder and any failure by the District to comply with the provisions of the Undertaking shall not be an event of default with respect to the Notes).

To the extent required under the Rule, the Chairperson and Secretary, or other officer of the District charged with the responsibility for issuing the Notes, shall provide a Continuing Disclosure Certificate for inclusion in the transcript of proceedings, setting forth the details and terms of the District's Undertaking.

Section 17. Record Book. The Secretary shall provide and keep the transcript of proceedings as a separate record book (the "Record Book") and shall record a full and correct statement of every step or proceeding had or taken in the course of authorizing and issuing the Notes in the Record Book.

Section 18. Bond Insurance. If the Purchaser determines to obtain municipal bond insurance with respect to the Notes, the officers of the District are authorized to take all actions necessary to obtain such municipal bond insurance. The Chairperson and Secretary are authorized to agree to such additional provisions as the bond insurer may reasonably request and which are acceptable to the Chairperson and Secretary including provisions regarding restrictions on investment of Note proceeds, the payment procedure under the municipal bond insurance policy, the rights of the bond insurer in the event of default and payment of the Notes by the bond insurer and notices to be given to the bond insurer. In addition, any reference required by the bond insurer to the municipal bond insurance policy shall be made in the form of Note provided herein.

Section 19. Conflicting Resolutions; Severability; Effective Date. All prior resolutions, rules or other actions of the District Board or any parts thereof in conflict with the provisions hereof shall be, and the same are, hereby rescinded insofar as the same may so conflict. In the event that any one or more provisions hereof shall for any reason be held to be illegal or invalid, such illegality or invalidity shall not affect any other provisions hereof. The foregoing shall take effect immediately upon adoption and approval in the manner provided by law.

Adopted, approved and recorded September 17, 2015.

---

Gary Olsen  
Chairperson

ATTEST:

---

Susan S. Greenfield  
Secretary

(SEAL)

EXHIBIT A

Note Purchase Proposal

To be provided by Robert W. Baird & Co. Incorporated and incorporated into the Resolution.

(See Attached)

DRAFT

EXHIBIT B-1

Pricing Summary

To be provided by Robert W. Baird & Co. Incorporated and incorporated into the Resolution.

(See Attached)

DRAFT



EXHIBIT B-2

Debt Service Schedule and Irrepealable Tax Levies

To be provided by Robert W. Baird & Co. Incorporated and incorporated into the Resolution.

(See Attached)

DRAFT

EXHIBIT C

(Form of Note)

REGISTERED UNITED STATES OF AMERICA DOLLARS  
STATE OF WISCONSIN  
RACINE, KENOSHA AND WALWORTH COUNTIES  
NO. R-\_\_\_\_ GATEWAY TECHNICAL COLLEGE DISTRICT \$\_\_\_\_\_  
GENERAL OBLIGATION PROMISSORY NOTE, SERIES 2015-2016C

MATURITY DATE: ORIGINAL DATE OF ISSUE: INTEREST RATE: CUSIP:  
April 1, \_\_\_\_\_ October 8, 2015 \_\_\_\_\_% \_\_\_\_\_

DEPOSITORY OR ITS NOMINEE NAME: CEDE & CO.

PRINCIPAL AMOUNT: \_\_\_\_\_ THOUSAND DOLLARS  
(\$\_\_\_\_\_)

FOR VALUE RECEIVED, Gateway Technical College District, Racine, Kenosha and Walworth Counties, Wisconsin (the "District"), hereby acknowledges itself to owe and promises to pay to the Depository or its Nominee Name (the "Depository") identified above (or to registered assigns), on the maturity date identified above, the principal amount identified above, and to pay interest thereon at the rate of interest per annum identified above, all subject to the provisions set forth herein regarding redemption prior to maturity. Interest shall be payable semi-annually on April 1 and October 1 of each year commencing on April 1, 2016 until the aforesaid principal amount is paid in full. Both the principal of and interest on this Note are payable to the registered owner in lawful money of the United States. Interest payable on any interest payment date shall be paid by wire transfer to the Depository in whose name this Note is registered on the Bond Register maintained by the Secretary or District Treasurer (the "Fiscal Agent") or any successor thereto at the close of business on the 15th day of the calendar month next preceding the semi-annual interest payment date (the "Record Date"). This Note is payable as to principal upon presentation and surrender hereof at the office of the Fiscal Agent.

For the prompt payment of this Note together with interest hereon as aforesaid and for the levy of taxes sufficient for that purpose, the full faith, credit and resources of the District are hereby irrevocably pledged.

This Note is one of an issue of Notes aggregating the principal amount of \$500,000, all of which are of like tenor, except as to denomination, interest rate and maturity date, issued by the District pursuant to the provisions of Section 67.12(12), Wisconsin Statutes, for the public purpose of financing building remodeling and improvement projects, all as authorized by resolutions of the District Board duly adopted by said governing body at meetings held on August 20, 2015 and September 17, 2015. Said resolutions are recorded in the official minutes of the District Board for said dates.

This Note is not subject to optional redemption.

It is hereby certified and recited that all conditions, things and acts required by law to exist or to be done prior to and in connection with the issuance of this Note have been done, have existed and have been performed in due form and time; that the aggregate indebtedness of the District, including this Note and others issued simultaneously herewith, does not exceed any limitation imposed by law or the Constitution of the State of Wisconsin; and that a direct annual irrevocable tax has been levied sufficient to pay this Note, together with the interest thereon, when and as payable.

This Note is transferable only upon the books of the District kept for that purpose at the office of the Fiscal Agent, only in the event that the Depository does not continue to act as depository for the Notes, and the District appoints another depository, upon surrender of the Note to the Fiscal Agent, by the registered owner in person or his duly authorized attorney, together with a written instrument of transfer (which may be endorsed hereon) satisfactory to the Fiscal Agent duly executed by the registered owner or his duly authorized attorney. Thereupon a new fully registered Note in the same aggregate principal amount shall be issued to the new depository in exchange therefor and upon the payment of a charge sufficient to reimburse the District for any tax, fee or other governmental charge required to be paid with respect to such registration. The Fiscal Agent shall not be obliged to make any transfer of the Notes after the Record Date. The Fiscal Agent and District may treat and consider the Depository in whose name this Note is registered as the absolute owner hereof for the purpose of receiving payment of, or on account of, the principal hereof and interest due hereon and for all other purposes whatsoever. The Notes are issuable solely as negotiable, fully-registered Notes without coupons in the denomination of \$5,000 or any integral multiple thereof.

No delay or omission on the part of the owner hereof to exercise any right hereunder shall impair such right or be considered as a waiver thereof or as a waiver of or acquiescence in any default hereunder.

IN WITNESS WHEREOF, Gateway Technical College District, Racine, Kenosha and Walworth Counties, Wisconsin, by its governing body, has caused this Note to be executed for it and in its name by the manual or facsimile signatures of its duly qualified Chairperson and Secretary; and to be sealed with its official or corporate seal, if any, all as of the original date of issue specified above.

GATEWAY TECHNICAL COLLEGE DISTRICT,  
RACINE, KENOSHA AND WALWORTH  
COUNTIES, WISCONSIN

By: \_\_\_\_\_  
Gary Olsen  
Chairperson

(SEAL)

By: \_\_\_\_\_  
Susan S. Greenfield  
Secretary

DRAFT

ASSIGNMENT

FOR VALUE RECEIVED, the undersigned sells, assigns and transfers unto

\_\_\_\_\_  
(Name and Address of Assignee)

\_\_\_\_\_  
(Social Security or other Identifying Number of Assignee)

the within Note and all rights thereunder and hereby irrevocably constitutes and appoints \_\_\_\_\_, Legal Representative, to transfer said Note on the books kept for registration thereof, with full power of substitution in the premises.

Dated: \_\_\_\_\_

Signature Guaranteed:

\_\_\_\_\_  
(e.g. Bank, Trust Company  
or Securities Firm)

\_\_\_\_\_  
(Depository or Nominee Name)

NOTICE: This signature must correspond with the name of the Depository or Nominee Name as it appears upon the face of the within Note in every particular, without alteration or enlargement or any change whatever.

\_\_\_\_\_  
(Authorized Officer)

# GATEWAY TECHNICAL COLLEGE DISTRICT BOARD

Roll Call \_\_\_\_\_  
Action   X    
Information \_\_\_\_\_  
Discussion \_\_\_\_\_

## RESOLUTION B-2015 C.1 & C.2 LAW ENFORCEMENT ACADEMY RENOVATIONS ACADEMIC BUILDING, KENOSHA CAMPUS

**Summary of Item:** Gateway Technical College is proposing to renovate 4,800 square feet of the Kenosha Campus Academic Building for the Law Enforcement Academy. The proposed renovation will accommodate growth, improve efficiencies, and enhance the student experience.

The estimated cost to renovate the Kenosha Campus Academic Building Law Enforcement Academy is \$500,000.

**Attachments:** Resolutions No. B-2015 C.1 & C.2  
Gateway's State Board submission including budget and floor plan of the proposed renovations.

**Staff Liaison:** William R. Whyte

TopResoB2015 C.1&C.2 Kenosha Campus Law.....09/17/15

# Gateway Technical College

## RESOLUTION NO. B-2015 C.1

**WHEREAS**, Gateway Technical College is proposing to renovate 4,800 square feet of the Kenosha Campus, Academic Building, Law Enforcement Academy and;

**WHEREAS**, the proposed renovation will accommodate growth, improve efficiencies, and enhance the student learning experience, and;

**WHEREAS**, the Gateway Technical College District Board has determined the estimated cost to renovate the Kenosha Campus, Academic Building, Law Enforcement Academy to be \$500,000;

**NOW, THEREFORE, BE IT RESOLVED**, that the Gateway Technical College Board, pursuant to s38.04(10), Wis. Stats, and Chapter TCS 5, of the Wisconsin Administrative Code, approves the renovation of the Kenosha Campus, Academic Building Law Enforcement Academy.

---

Gary Olsen  
Chairperson

---

Susan Greenfield  
Secretary

September 17, 2015  
Date

# Gateway Technical College

## RESOLUTION NO. B-2015 C.2

**WHEREAS**, pursuant to s38.04(10), Wis. Stats, and Chapter TCS 5, of the Wisconsin Administrative Code, the Gateway Technical College District Board has approved the renovation of 4,800 square feet of the Kenosha Campus, Academic Building Law Enforcement Academy for an estimated cost of \$500,000.

**NOW, THEREFORE, BE IT RESOLVED**, that, pursuant to s38.04(10), Wis. Stats, and Chapter TCS 5, of the Wisconsin Administrative Code, the Gateway Technical College District Board requests the Wisconsin Technical College System Board approve the renovation of the Kenosha Campus, Academic Building Law Enforcement Academy.

---

Gary Olsen  
Chairperson

---

Susan Greenfield  
Secretary

September 17, 2015  
Date



# **REQUEST FOR APPROVAL**

## **RENOVATION**

### **Wisconsin Technical College System Board**

This request for Wisconsin Technical College Board approval for renovation and expansion of facilities is made pursuant to s.38.04(10), Wis. Stats and Chapter TCS 5, Wis. Adm. Code.

#### **PROJECT TITLE AND DESCRIPTION:**

Kenosha Campus, Academic Building Law Enforcement Academy Renovation

District: Gateway Technical College

Authorized Representative: Lawrence J. Paruskiewicz

Date Submitted: September 17, 2015

Date of Requested WTCSB Review: November 10, 2015

# NEED FOR RENOVATION OF FACILITIES

Gateway Technical College currently houses a Law Enforcement Academy on the Kenosha Campus which supports law enforcement training for both Law Enforcement Academy recruits and continuing education for police officers.

Much of the Law Enforcement program's existing instructional space was carved out of old automotive and welding shop space. Existing HVAC and electrical systems are outdated, inadequate, and in need of upgrading (Although robust, main electrical circuiting was designed for a machine shop environment but not for 110V distribution). As instructional space, improvements are needed to be able to offer enhanced learning opportunities.

The proposed renovation includes an area of approximately 4,800 sq. ft. A key component of the renovation is the construction of a Crime Scene Investigation Lab. Also included are new classrooms, an updated space for the MILO simulator system, and storage for program equipment.

Law Enforcement Academy students would be the primary users of the renovated instructional space. Enrollments have been steady at approximately 44 FTE. Additional training opportunities become available for local law enforcement and for Criminal Justice program students. Enrollments are expected to increase by 10 to 15 FTE with the new training capability.

## FINANCIAL IMPACT

The \$1.5 million construction project will be funded by a bond issue.

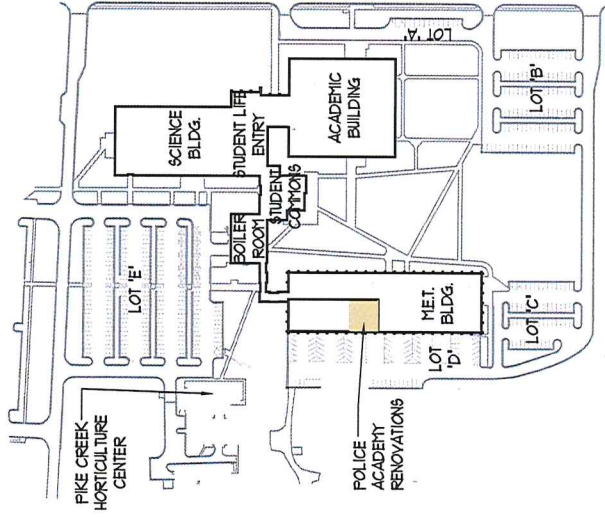
Operating costs are expected to remain steady for the renovated space.

## PROJECT BUDGET

Architectural fees	40,000
General construction	150,000
Electrical	110,000
Plumbing	50,000
HVAC	50,000
Project Contingency	100,000
<b>Total Budget</b>	<b>500,000</b>

# GTC KENOSHA CAMPUS LAW ENFORCEMENT ACADEMY RENOVATIONS

## KEY PLAN



## PROJECT DATA

BUILDING AREA	
EXISTING MET. BUILDING	48571 SQ. FT.
POLICE ACADEMY RENOVATION	4810 SQ. FT.
TOTAL BUILDING	48571 SQ. FT.

**GTC KENOSHA CAMPUS  
POLICE ACADEMY  
INTERIOR RENOVATIONS**

DATE: 09.08.15

NUMBER: 191.15.022

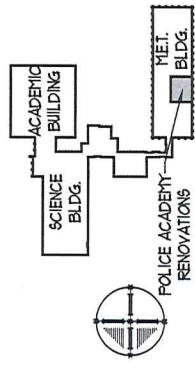
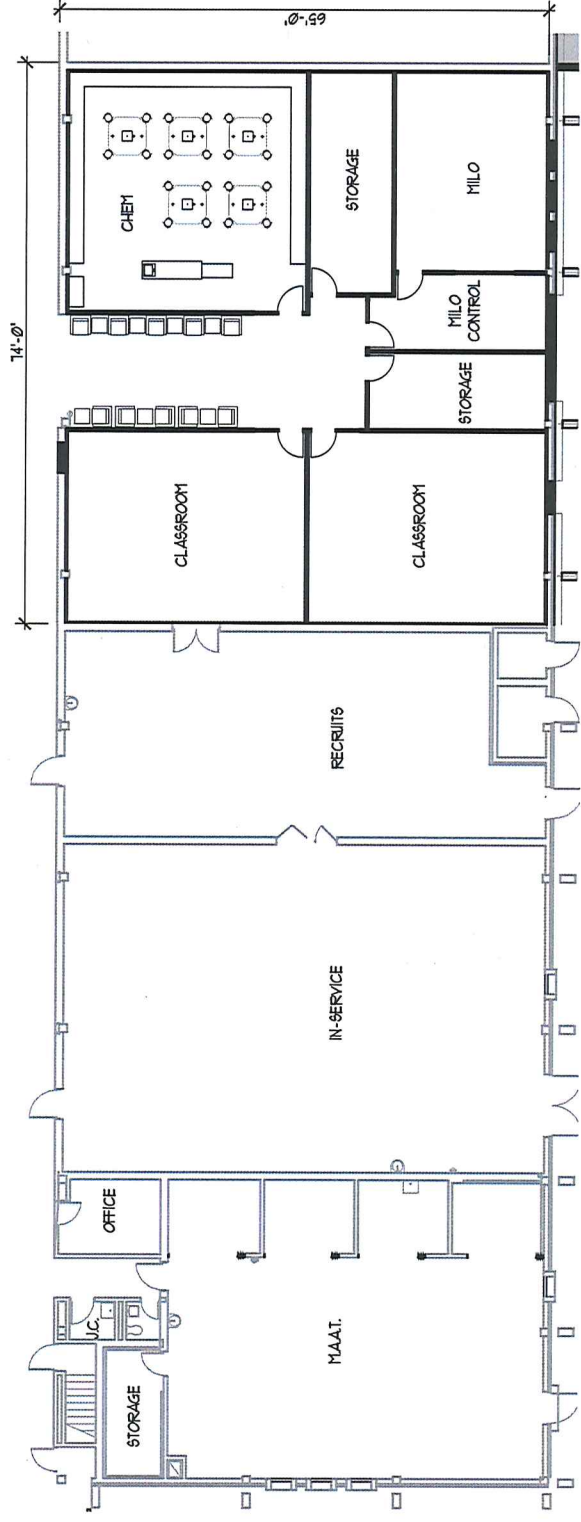


**Partners in Design**  
ARCHITECTS

**ARCHITECT:**  
PARTNERS IN DESIGN ARCHITECTS  
600 57th STREET, SUITE 220  
KENOSHA, WISCONSIN 53140  
PHONE: 262.652.2800  
FAX: 262.652.2800  
ATTN: MARK MOLNARO, JR., AIA, AIA, LEED AP  
OR  
JEFFREY E. BRIDLEMAN



**CLIENT:**  
GATEWAY TECHNICAL COLLEGE  
3520 30TH AVENUE  
KENOSHA, WISCONSIN 53144  
PHONE: 262.741.9504  
ATTN: LARRY PARISZKIEWICZ



**KEY PLAN**

NTS



**Partners in Design**  
**ARCHITECTS**

262.652.2800  
Kenosha, WI

847.940.0300  
Riverwoods, IL

**Floor Plan**

GTC Kenosha Law Enforcement Academy Renovations

September 8, 2015  
191.15.022  
SCALE: 1/16" = 1'-0"

© 2015 Partners in Design Architects, Inc.

# GATEWAY TECHNICAL COLLEGE DISTRICT BOARD

Roll Call \_\_\_\_\_  
Action   X    
Information \_\_\_\_\_  
Discussion \_\_\_\_\_

## RESOLUTION B-2015 D.1 & D.2 SHOOTING RANGE EXPANSION ACADEMIC BUILDING, KENOSHA CAMPUS

**Summary of Item:** Gateway Technical College is proposing to expand 13,400 square feet of the Kenosha Campus Academic Building for a Shooting Range. The proposed expansion will accommodate growth, improve efficiencies, and enhance the student experience.

The estimated cost to expand the Kenosha Campus Academic Building Shooting Range is \$1,500,000.

**Attachments:** Resolutions No. B-2015 D.1 & D.2  
Gateway's State Board submission including budget and floor plan of the proposed expansion.

**Staff Liaison:** William R. Whyte

TopResoB2015 D.1&D.2 Kenosha Campus Shooting Range Expansion 09/17/15

# Gateway Technical College

## RESOLUTION NO. B-2015 D.1

**WHEREAS**, Gateway Technical College is proposing an expansion of 13,400 square feet of the Kenosha Campus, Academic Building Shooting Range, and

**WHEREAS**, the proposed expansion will accommodate a new shooting range and support spaces that will improve efficiencies, and enhance the student learning experience, and;

**WHEREAS**, the Gateway Technical College District Board has determined the estimated cost to expand the Kenosha Campus, Academic Building Shooting Range to be \$1,500,000;

**NOW, THEREFORE, BE IT RESOLVED**, that the Gateway Technical College Board, pursuant to s38.04(10), Wis. Stats, and Chapter TCS 5, of the Wisconsin Administrative Code, approves the expansion of the Kenosha Campus Academic Building Shooting Range.

---

Gary Olsen  
Chairperson

---

Susan Greenfield  
Secretary

September 17, 2015  
Date

# Gateway Technical College

## RESOLUTION NO. B-2015 D.2

**WHEREAS**, pursuant to s38.04(10), Wis. Stats, and Chapter TCS 5, of the Wisconsin Administrative Code, the Gateway Technical College District Board has approved the expansion of 13,400 square feet of the Kenosha Campus Academic Building Shooting Range for an estimated cost of \$1,500,000.

**NOW, THEREFORE, BE IT RESOLVED**, that, pursuant to s38.04(10), Wis. Stats, and Chapter TCS 5, of the Wisconsin Administrative Code, the Gateway Technical College District Board requests the Wisconsin Technical College System Board approve the expansion on the Kenosha Campus Academic Building Shooting Range.

---

Gary Olsen  
Chairperson

---

Susan Greenfield  
Secretary

September 17, 2015  
Date

# **REQUEST FOR APPROVAL**

## **EXPANSION**

### **Wisconsin Technical College System Board**

This request for Wisconsin Technical College Board approval for renovation and expansion of facilities is made pursuant to s.38.04(10), Wis. Stats and Chapter TCS 5, Wis. Adm. Code.

#### **PROJECT TITLE AND DESCRIPTION:**

Kenosha Campus Academic Building Shooting Range Expansion

District: Gateway Technical College

Authorized Representative: Lawrence J. Paruszkiewicz

Date Submitted: September 17, 2015

Date of Requested WTCSB Review: November 10, 2015



# NEED FOR EXPANSION OF FACILITIES

Gateway Technical College currently houses a shooting range on the Kenosha Campus which supports law enforcement training for both Law Enforcement Academy recruits and continuing education for police officers.

The current range does not meet state standards for law enforcement training. The range is too short and narrow. Because of the required ratio of students per instructor, the small range is inefficient to operate. The bullet trap and ventilation systems are antiquated. The basement location of the existing range does not meet the accessibility requirements of the ADA. It is not feasible to expand the shooting range in the current location due to the size and configuration of the basement.

The proposed expansion includes a new shooting range and support spaces totaling 13,400 SF. The range will be 12 lanes wide and in full compliance with all training requirements. Ancillary spaces include an armory, range master office, ready room and firearm cleaning space. The space will be fitted with modern bullet trap and ventilation equipment.

## FINANCIAL IMPACT

The \$1,000,000 construction project will be funded by a bond issue.

Operating costs are expected to increase slightly due to the addition of more and expanded program equipment operation.

## PROJECT BUDGET

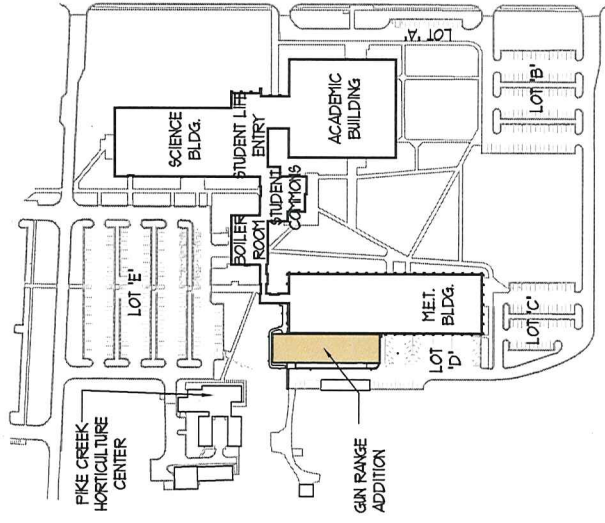
Architectural fees	110,000
General construction	1,080,000
Electrical	110,000
Plumbing	50,000
HVAC	50,000
Project Contingency	100,000
<b>Total Budget</b>	<b>1,500,000</b>



# GTC KENOSHA CAMPUS GUN RANGE ADDITION

September 17, 2015  
58

## KEY PLAN



## PROJECT DATA

BUILDING AREA	48,571 SQ. FT.
EXISTING MET. BUILDING	13,620 SQ. FT.
GUN RANGE ADDITION	6,161 SQ. FT.
TOTAL BUILDING	6,161 SQ. FT.

GTC KENOSHA CAMPUS  
GUN RANGE ADDITION

DATE: 09.08.15  
NUMBER: 191.15.022

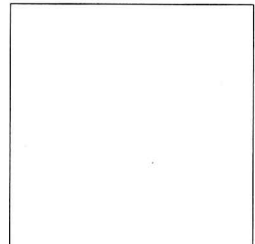
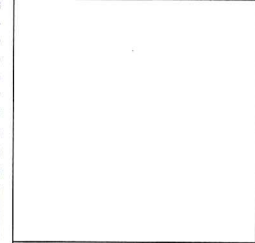


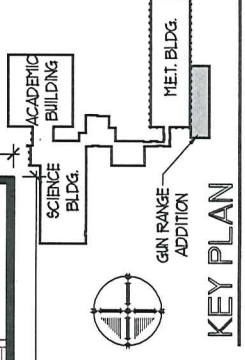
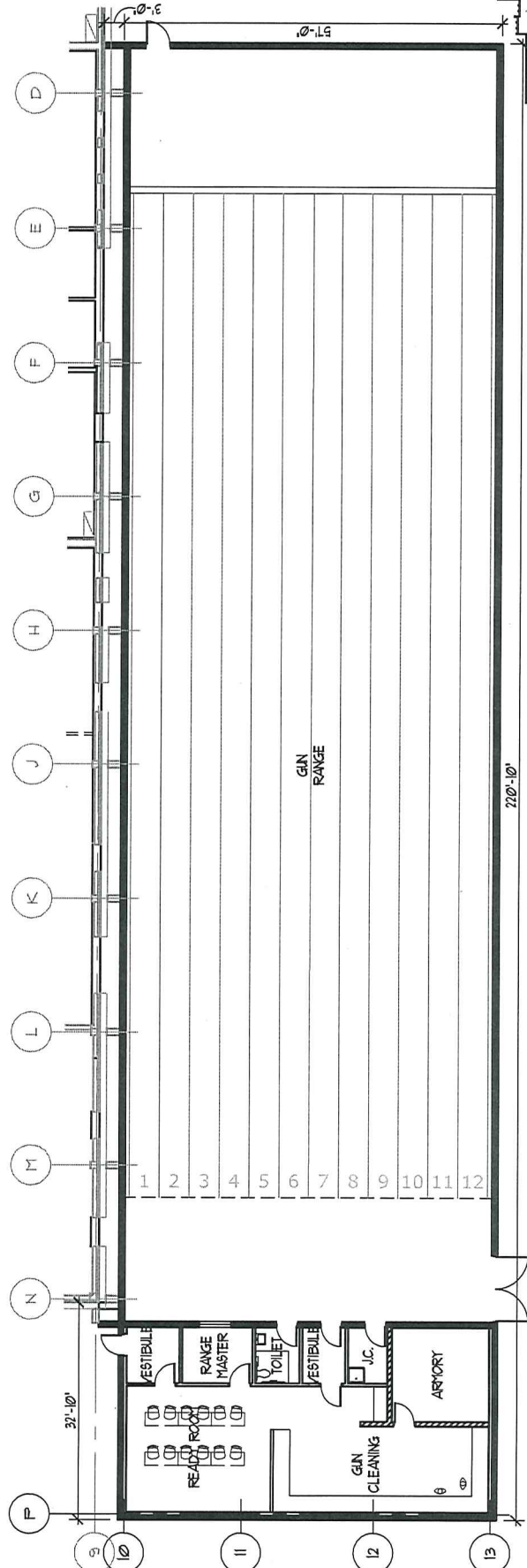
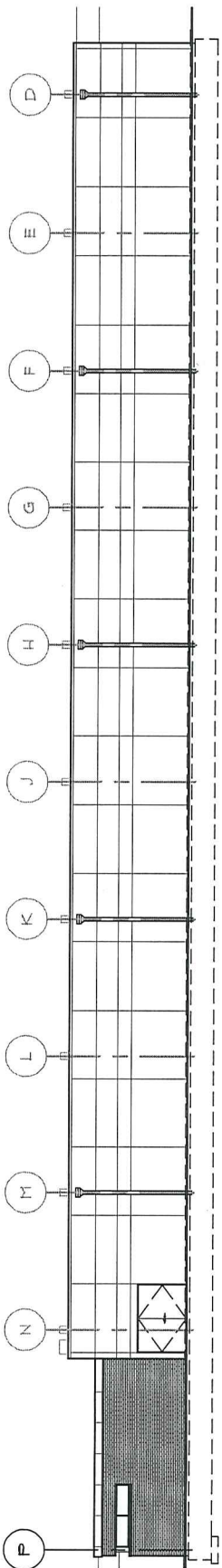
CLIENT:  
GATEWAY TECHNICAL COLLEGE  
3520 30TH AVENUE  
KENOSHA, WISCONSIN 53144  
PHONE: 262.741.8204  
ATTN: LARRY PARUSZKIEWICZ



Partners in Design  
ARCHITECTS

ARCHITECT:  
PARTNERS IN DESIGN ARCHITECTS  
600 57th STREET, SUITE 220  
KENOSHA, WISCONSIN 53140  
PHONE: 262.652.2800  
FAX: 262.652.2812  
ATTN: MARK MOLINARO, JR., AIA, AIA, LEED AP  
OR  
JEFFREY E. BRIDLEMAN





**KEY PLAN**  
NTS

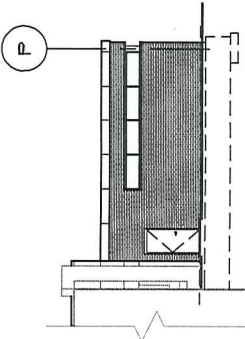
September 8, 2015  
191.15.022  
SCALE: 1/16" = 1'-0"

**Floor Plan and West Elevation**  
GTC Kenosha Gun Range Addition

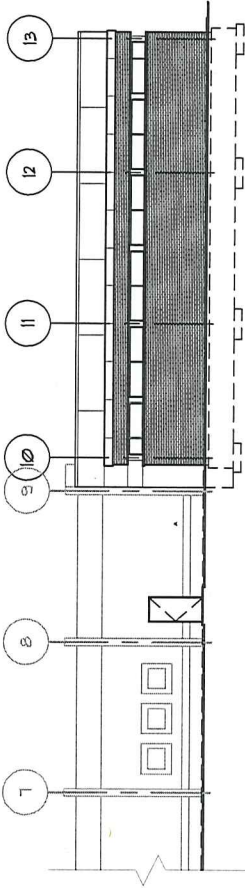
© 2015 Partners in Design Architects, Inc.



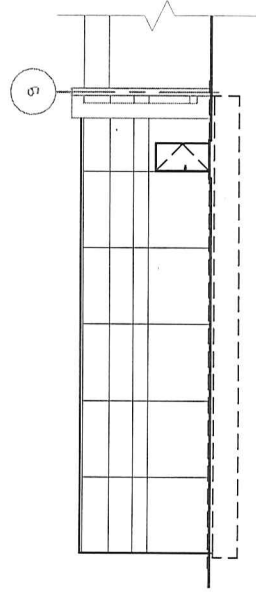
**Partners in Design**  
**ARCHITECTS**  
262.652.2800  
Kenosha, WI  
847.840.0300  
Riverrocks, IL



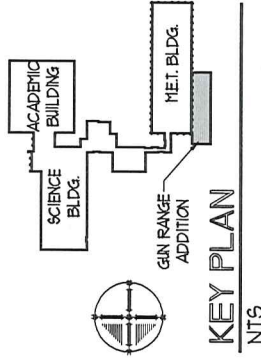
**East Elevation**



**North Elevation**



**South Elevation**



**Elevations**

GTC Kenosha Gun Range Addition

© 2015 Partners In Design Architects, Inc.

September 8, 2015

191.15.022

SCALE: 1/16" = 1'-0"



**Partners in Design**  
**ARCHITECTS**

262.652.2800  
Kenosha, WI

847.840.0300  
Beverly Hills, IL

IX. OPERATIONAL AGENDA

B. Consent Agenda

1. Finance
  - a) Financial Statement and Expenditures over \$2,500
  - b) Cash and Investment Schedules
2. Personnel Report
3. Contracts for Instructional Delivery
4. Advisory Committee Activity Report
5. Program Approvals:
  - a) Apprentice Program Reinstatement Request 50-420-1 Mold Maker Apprentice
  - b) New Apprentice Program Request 50-420-2 Machinist Apprentice
  - c) New Apprentice Program Request 50-420-9 Industrial Manufacturing Technician
  - d) New Apprentice Program Request 50-461-1 Maintenance Technician Apprentice
6. AACC Pathways Projects Approval
7. Approval of BIDs:
  - a) Bid #1484 – Technical Building Electrical Service Upgrade Racine Campus
  - b) Bid #1487 – Boiler Replacement Project Kenosha Campus

# GATEWAY TECHNICAL COLLEGE DISTRICT BOARD

Roll Call  
Action X  
Information  
Discussion

## FINANCIAL STATEMENT AND EXPENDITURES OVER \$2,500

**Summary of Item:** Summary of revenue and expenditures as of **8/31/15**

Ends Statements and/or Executive Limitations  
Section 3 - Executive Limitations  
Policy 3.5 Financial Condition

**Staff Liaison:** Bane Thomey

09/07/15

**GATEWAY TECHNICAL COLLEGE  
2015-16 SUMMARY OF REVENUE & EXPENDITURES AS OF 8/31/15**

<u>COMBINED FUNDS</u>	2015-16 APPROVED BUDGET	2015-16 WORKING BUDGET	2015-16 ACTUAL TO DATE	PERCENT INCURRED
<b>REVENUE:</b>				
LOCAL GOVERNMENT	\$ 30,010,218	\$ 30,010,218	\$ -	0.00%
STATE AIDS	42,541,604	42,541,604	1,811,041	4.26%
STATUTORY PROGRAM FEES	15,922,142	15,922,142	8,679,379	54.51%
MATERIAL FEES	755,680	755,680	418,438	55.37%
OTHER STUDENT FEES	3,190,172	3,190,172	1,451,345	45.49%
INSTITUTIONAL	9,844,417	9,844,417	806,337	8.19%
FEDERAL	34,745,902	34,745,902	4,423,427	12.73%
OTHER RESOURCES	<u>12,255,000</u>	<u>12,255,000</u>	<u>8,442,790</u>	68.89%
<b>TOTAL REVENUE &amp; OTHER RESOURCES</b>	<u><u>\$ 149,265,135</u></u>	<u><u>\$ 149,265,135</u></u>	<u><u>\$ 26,032,757</u></u>	17.44%
<b>EXPENDITURES BY FUNCTION:</b>				
INSTRUCTIONAL	\$ 60,021,182	\$ 60,021,182	\$ 8,586,476	14.31%
INSTRUCTIONAL RESOURCES	1,245,851	1,245,851	177,445	14.24%
STUDENT SERVICES	51,605,234	51,605,234	6,367,353	12.34%
GENERAL INSTITUTIONAL	11,721,655	11,721,655	3,292,275	28.09%
PHYSICAL PLANT	23,447,113	23,447,113	1,432,401	6.11%
AUXILIARY SERVICES	700,000	700,000	65,581	9.37%
PUBLIC SERVICES	<u>363,100</u>	<u>363,100</u>	<u>53,856</u>	14.83%
<b>TOTAL EXPENDITURES</b>	<u><u>\$ 149,104,135</u></u>	<u><u>\$ 149,104,135</u></u>	<u><u>\$ 19,975,387</u></u>	13.40%
<b>EXPENDITURES BY FUNDS:</b>				
GENERAL	\$77,858,865	\$77,858,865	\$11,994,303	15.41%
SPECIAL REVENUE - OPERATIONAL	7,956,270	7,956,270	910,922	11.45%
SPECIAL REVENUE - NON AIDABLE	39,934,000	39,934,000	4,640,743	11.62%
CAPITAL PROJECTS	12,240,000	12,240,000	2,258,238	18.45%
DEBT SERVICE	10,415,000	10,415,000	105,600	1.01%
ENTERPRISE	<u>700,000</u>	<u>700,000</u>	<u>65,581</u>	9.37%
<b>TOTAL EXPENDITURES</b>	<u><u>\$ 149,104,135</u></u>	<u><u>\$ 149,104,135</u></u>	<u><u>\$19,975,387</u></u>	13.40%

09/07/15

**GATEWAY TECHNICAL COLLEGE  
2015-16 SUMMARY OF REVENUE & EXPENDITURES AS OF 8/31/15**

<u>GENERAL FUND</u>	2015-16 APPROVED BUDGET	2015-16 WORKING BUDGET	2015-16 ACTUAL TO DATE	PERCENT INCURRED
<b>REVENUE:</b>				
LOCAL GOVERNMENT	\$17,500,083	\$ 17,500,083	\$ -	0.00%
STATE AIDS	37,989,039	37,989,039	1,807,441	4.76%
STATUTORY PROGRAM FEES	15,922,142	15,922,142	8,679,379	54.51%
MATERIAL FEES	755,680	755,680	418,438	55.37%
OTHER STUDENT FEES	1,983,172	1,983,172	942,826	47.54%
FEDERAL REVENUE	29,902	29,902	135	0.45%
INSTITUTIONAL	3,678,847	3,678,847	31,577	0.86%
OTHER RESOURCES	-	-	-	
TOTAL REVENUE & OTHER RESOURCES	<u>\$77,858,865</u>	<u>\$ 77,858,865</u>	<u>\$ 11,879,796</u>	15.26%
 <b>EXPENDITURES BY FUNCTION:</b>				
INSTRUCTIONAL	\$50,687,445	\$ 50,687,445	\$ 6,897,211	13.61%
INSTRUCTIONAL RESOURCES	1,240,851	1,240,851	177,445	14.30%
STUDENT SERVICES	10,901,808	10,901,808	1,530,906	14.04%
GENERAL INSTITUTIONAL	7,517,398	7,517,398	2,450,182	32.59%
PHYSICAL PLANT	<u>7,511,363</u>	<u>7,511,363</u>	<u>938,560</u>	12.50%
TOTAL EXPENDITURES	<u>\$77,858,865</u>	<u>\$ 77,858,865</u>	<u>\$ 11,994,303</u>	15.41%



09/07/15

**GATEWAY TECHNICAL COLLEGE  
2015-16 SUMMARY OF REVENUE & EXPENDITURES AS OF 8/31/15**

<u><b>SPECIAL REVENUE -OPERATIONAL FUND</b></u>	<b>2015-16 APPROVED BUDGET</b>	<b>2015-16 WORKING BUDGET</b>	<b>2015-16 ACTUAL TO DATE</b>	<b>PERCENT INCURRED</b>
REVENUE:				
LOCAL GOVERNMENT	\$ 2,149,135	\$ 2,149,135	\$ -	0.00%
STATE AIDS	2,329,565	2,329,565	-	0.00%
FEDERAL	3,086,000	3,086,000	-	0.00%
INSTITUTIONAL	<u>391,570</u>	<u>391,570</u>	<u>16,939</u>	4.33%
<b>TOTAL REVENUE &amp; OTHER RESOURCES</b>	<u><b>\$ 7,956,270</b></u>	<u><b>\$ 7,956,270</b></u>	<u><b>\$ 16,939</b></u>	0.21%
EXPENDITURES BY FUNCTION:				
INSTRUCTIONAL	\$ 5,125,407	\$ 5,125,407	\$ 483,699	9.44%
STUDENT SERVICES	1,563,756	1,563,756	281,590	18.01%
GENERAL INSTITUTIONAL	890,257	890,257	83,653	9.40%
PHYSICAL PLANT	20,750	20,750	8,123	
PUBLIC SERVICES	<u>356,100</u>	<u>356,100</u>	<u>53,856</u>	15.12%
<b>TOTAL EXPENDITURES</b>	<u><b>\$ 7,956,270</b></u>	<u><b>\$ 7,956,270</b></u>	<u><b>\$ 910,922</b></u>	11.45%

09/07/15

**GATEWAY TECHNICAL COLLEGE  
2015-16 SUMMARY OF REVENUE & EXPENDITURES AS OF 8/31/15**

<u>SPECIAL REVENUE-NON AIDABLE FUND</u>	<b>2015-16 APPROVED BUDGET</b>	<b>2015-16 WORKING BUDGET</b>	<b>2015-16 ACTUAL TO DATE</b>	<b>PERCENT INCURRED</b>
REVENUE:				
STATE AIDS	\$ 2,153,000	\$ 2,153,000	\$ 3,600	0.17%
OTHER STUDENT FEES	907,000	907,000	455,567	50.23%
INSTITUTIONAL	5,314,000	5,314,000	676,340	12.73%
FEDERAL	<u>31,560,000</u>	<u>31,560,000</u>	<u>4,423,292</u>	14.02%
TOTAL REVENUE & OTHER RESOURCES	<u>\$39,934,000</u>	<u>\$ 39,934,000</u>	<u>\$ 5,558,799</u>	13.92%
EXPENDITURES BY FUNCTION:				
STUDENT SERVICES	\$39,103,000	\$ 39,103,000	\$ 4,547,405	11.63%
GENERAL INSTITUTIONAL	<u>831,000</u>	<u>831,000</u>	<u>93,338</u>	11.23%
TOTAL EXPENDITURES	<u>\$39,934,000</u>	<u>\$ 39,934,000</u>	<u>\$ 4,640,743</u>	11.62%

09/07/15

**GATEWAY TECHNICAL COLLEGE  
2015-16 SUMMARY OF REVENUE & EXPENDITURES AS OF 8/31/15**

<u><b>CAPITAL PROJECTS FUND</b></u>	<b>2015-16 APPROVED BUDGET</b>	<b>2015-16 WORKING BUDGET</b>	<b>2015-16 ACTUAL TO DATE</b>	<b>PERCENT INCURRED</b>
REVENUE:				
LOCAL GOVERNMENT	\$ -	\$ -	\$ -	
STATE AIDS	70,000	70,000	-	0.00%
FEDERAL	70,000	70,000	-	0.00%
INSTITUTIONAL	100,000	100,000	2,659	2.66%
OTHER RESOURCES	<u>12,000,000</u>	<u>12,000,000</u>	<u>8,000,000</u>	66.67%
 TOTAL REVENUE & OTHER RESOURCES	 <u>\$ 12,240,000</u>	 <u>\$ 12,240,000</u>	 <u>\$ 8,002,659</u>	 65.38%
 EXPENDITURES BY FUNCTION:				
INSTRUCTIONAL	\$ 4,208,330	\$ 4,208,330	\$ 1,205,566	28.65%
INSTRUCTIONAL - RESOURCES	5,000	5,000	-	0.00%
STUDENT SERVICES	36,670	36,670	7,452	20.32%
GENERAL INSTITUTIONAL	2,483,000	2,483,000	665,103	26.79%
PHYSICAL PLANT	5,500,000	5,500,000	380,118	6.91%
PUBLIC SERVICE	<u>7,000</u>	<u>7,000</u>	<u>-</u>	0.00%
 TOTAL EXPENDITURES	 <u>\$ 12,240,000</u>	 <u>\$ 12,240,000</u>	 <u>\$ 2,258,238</u>	 18.45%

09/07/15

**GATEWAY TECHNICAL COLLEGE  
2015-16 SUMMARY OF REVENUE & EXPENDITURES AS OF 8/31/15**

<b><u>DEBT SERVICE FUND</u></b>	<b>2015-16 APPROVED BUDGET</b>	<b>2015-16 WORKING BUDGET</b>	<b>2015-16 ACTUAL TO DATE</b>	<b>PERCENT INCURRED</b>
REVENUE:				
LOCAL GOVERNMENT	\$ 10,316,000	\$ 10,316,000	\$ -	0.00%
INSTITUTIONAL	5,000	5,000	0	0.00%
OTHER RESOURCES	<u>255,000</u>	<u>255,000</u>	<u>442,790</u>	173.64%
TOTAL REVENUE & OTHER RESOURCES	<u>\$ 10,576,000</u>	<u>\$ 10,576,000</u>	<u>\$ 442,790</u>	4.19%
EXPENDITURES BY FUNCTION:				
PHYSICAL PLANT	<u>\$ 10,415,000</u>	<u>\$ 10,415,000</u>	<u>\$ 105,600</u>	1.01%
TOTAL EXPENDITURES	<u>\$ 10,415,000</u>	<u>\$ 10,415,000</u>	<u>\$ 105,600</u>	1.01%

09/07/15

**GATEWAY TECHNICAL COLLEGE  
2015-16 SUMMARY OF REVENUE & EXPENDITURES AS OF 8/31/15**

<b><u>ENTERPRISE FUND</u></b>	<b>2015-16 APPROVED BUDGET</b>	<b>2015-16 WORKING BUDGET</b>	<b>2015-16 ACTUAL TO DATE</b>	<b>PERCENT INCURRED</b>
REVENUE:				
LOCAL GOVERNMENT	\$ 45,000	\$ 45,000	\$ -	0.00%
OTHER STUDENT FEES	300,000	300,000	52,952	17.65%
INSTITUTIONAL	355,000	355,000	78,822	22.20%
FEDERAL	-	-	-	
TOTAL REVENUE & OTHER RESOURCES	<u>\$ 700,000</u>	<u>\$ 700,000</u>	<u>\$ 131,774</u>	18.82%
EXPENDITURES BY FUNCTION:				
AUXILIARY SERVICES	<u>\$ 700,000</u>	<u>\$ 700,000</u>	<u>\$ 65,581</u>	9.37%
TOTAL EXPENDITURES	<u>\$ 700,000</u>	<u>\$ 700,000</u>	<u>\$ 65,581</u>	9.37%

# GATEWAY TECHNICAL COLLEGE DISTRICT BOARD

Roll Call  
Action X  
Information  
Discussion

## CASH AND INVESTMENT SCHEDULES

**Summary of Item:** Monthly cash and investment schedules

Ends Statements and/or Executive Limitations:  
Section 3 - Executive Limitations  
Policy 3.5 Financial Condition

**Staff Liaison:** Bane Thomey

**GATEWAY TECHNICAL COLLEGE**  
**MONTHLY CASH RECONCILIATION**  
**FOR THE MONTH ENDING July 31, 2015**

**Cash Balance June 30, 2015** \$ 32,854,842.35

**PLUS:**

Cash Receipts 13,315,803.40

\$ 46,170,645.75

**LESS:**

Disbursement:

Payroll 3,801,305.78

Accounts Payable 9,052,555.21

12,853,860.99

**Cash Balance July 31, 2015** **\$ 33,316,784.76**

**DISPOSITION OF FUNDS**

Cash in Bank 1,079,457.41

Cash In Transit 47,274.76

Investments 32,185,902.59

Cash-on-hand 4,150.00

**TOTAL: July 31, 2015** **\$ 33,316,784.76**

GATEWAY TECHNICAL COLLEGE  
MONTHLY INVESTMENT REPORT

MOINVEST-10-11  
09/02/15

JULY 2015 - JUNE 2016

	Investments At Beginning Of Month	Investments At End Of Month	Change In Investments For Month	Investments Income For Month	YTD Investments Income	Average Monthly Rate of Investment Income
July-15	\$ 30,881,340	\$ 32,185,903	\$ 1,304,563	\$ 4,079	\$ 4,079	0.14
AUGUST			-			
SEPTEMBER			-			
OCTOBER			-			
NOVEMBER			-			
DECEMBER			-			
January-15			-			
FEBRUARY			-			
MARCH			-			
APRIL			-			
MAY			-			
JUNE			-			



**INVESTMENT SCHEDULE**

**July 31, 2015**

<b><u>NAME OF BANK/INST</u></b>	<b><u>DATE INVESTED</u></b>	<b><u>DATE OF MATURITY</u></b>	<b><u>AMOUNT</u></b>	<b><u>INTEREST RATE</u></b>	<b><u>PRESENT STATUS</u></b>
LOCAL GOV'T POOL	Various	Open	\$ 9,151,577	0.13	OPEN
WELLS FARGO	Various	Open	<u>\$ 23,034,325</u>	0.15	OPEN
		TOTAL	<u>\$ 32,185,903</u>		

**GATEWAY TECHNICAL COLLEGE DISTRICT BOARD**

Roll Call \_\_\_\_\_  
Action   X    
Information \_\_\_\_\_  
Discussion \_\_\_\_\_

**PERSONNEL REPORT**

**Summary of Item: Monthly Personnel Activity Report**

**Employment Approvals: New Hire(s)**  
**Employment Approvals: New Hire 40-Week Position**  
**Employment Approvals: New Hire Limited Term**  
**Promotion(s)**  
**Retirement(s)**  
**Resignation(s)**

**Ends Statements and/or Executive Limitations:**  
**Section 3: Executive Limitations**  
**Policy 3.3 - Compensation & Benefits**

**Staff Liaison: William Whyte**

09/17/15

**PERSONNEL REPORT  
SEPTEMBER 2015**

**EMPLOYMENT APPROVALS: NEW HIRE(S)**

Sandra A. Christman, Instructor Barber/Cosmetology, Service Occupations; Racine; Annual Salary: \$56,800.00; effective August 25, 2015

Thomas J. Cousino, Director Safety and Security, Human Resources; Kenosha; Annual Salary: \$65,000.00; effective September 8, 2015

Jehan M. Ghuari, Grants Specialist, Institutional Effectiveness; Kenosha; Annual Salary: \$60,000; effective September 8, 2015

Jennifer L. Lucas, Instructor Pharmacy Technician, Health Sciences Division; Burlington; Annual Salary: \$75,000.000; effective August 25, 2015

Kelly Martin, Instructor Aeronautics/Pilot Training, MET; Kenosha; Annual Salary: \$70,000.00; effective August 25, 2015

Susan R. Nelson, Instructor Barbering Technologist, Service Occupations; Kenosha; Annual Salary: \$57,900.00; effective August 25, 2015

Helene Stacy, Instructor Nursing, Health Occupations; Kenosha; Annual Salary: \$69,500.00; effective August 25, 2015

Kristine Voigt, Instructor Nursing, Health Occupations; Kenosha; Annual Salary: \$69,500; effective August 25, 2015

**EMPLOYMENT APPROVALS: NEW HIRE 40-WEEK POSITION**

James Cairns, Law Enforcement Training Technician, Service Occupations; Kenosha; Annual Salary: \$36,160.00; effective August 17, 2015

**EMPLOYMENT APPROVALS: NEW HIRE LIMITED TERM(S)**

Julie B. Schick, IT Academy Infrastructure Support Technician, LID; Kenosha; Hourly Salary: \$24.25, 20 hours/week position); effective August 10, 2015

**PROMOTION(S):**

Natashia Hanson, Divisional Dean Associate, Health Sciences; Kenosha; Annual Salary: \$42,140.80; previously Background/Health Information Associate; effective August 31, 2015

Robin Hoke, Director Business Development, Business & Workforce Solutions; Racine; Annual Salary: \$64,000.00; previously Project Manager with BWS; effective August 10, 2015

Kate Walker, Director Operations, Business & Workforce Solutions; Racine; Annual Salary: \$81,280.00; previously Director Business Services; effective August 10, 2015

**RETIREMENT(S):**

Steven G. Pravda, Assistant Horticulture Aide, Horticulture; Kenosha; effective August 31, 2015

**RESIGNATION(S):**

Lauri A. Howard, Director Workforce Training, Business & Workforce Solutions; Racine; effective September 30, 2015

GATEWAY TECHNICAL COLLEGE									
Employee Headcount*						Active Adjunct & Casual Positions**			
Positions	Aug '14	Aug '15	Change	Vacant	Current Total	Functional Area	Aug '14	Aug '15	Change
Administrators	78	85	7	0	85	Instructional Programs	248	204	-44
Clerical	88	83	-5	2	85	Library Services	2	1	-1
Counselor	7	7	0	0	7	Student Services	29	23	-6
Faculty	279	268	-11	2	270	General Institutional	7	14	7
Service	40	39	-1	2	41	Facilities	10	11	1
Technical	125	135	10	1	136	Auxiliary Services	8	0	-8
						Radio Station	3	4	1
<b>Total Positions</b>	<b>617</b>	<b>617</b>	<b>0</b>	<b>7</b>	<b>624</b>	<b>Total Adjunct/Casual</b>	<b>307</b>	<b>257</b>	<b>-50</b>
<i>* Excludes adjunct and casual positions.</i>						<i>** Excludes student work study</i>			

# GATEWAY TECHNICAL COLLEGE DISTRICT BOARD

Roll Call	_____
Action	<u>  X  </u>
Information	_____
Discussion	_____

## CONTRACTS FOR INSTRUCTIONAL DELIVERY

- Summary of Items:
- 1. 38.14 Contract reports for August 2015 over \$500 -**  
lists all contracts for service of \$500 or greater completed or in progress for the time period of June 2015.
  - 2. 38.14 Contract reports for August 2015 under \$500 -**  
lists all contracts for service less than \$500 completed or in progress for the time period of June 2015.

Ends Statements and/or Executive Limitations:  
Policy 4.4 College Strategic Directions/Ends Statements #1 and #3

Staff Liaison:                   Debbie Davidson

**38.14 CONTRACT REPORT  
FOR THE PERIOD OF AUGUST 2015**

Gateway Technical College  
Contracts over \$500.00

Contract Number	Company & City	Type of Recipient	Services	Type of Service	Dates	Estimated Cost of Service	Course Number	Number Served
2016-0058 2016-0059	Gateway Foundation Inc. Kenosha	21	CNC Intro CNC Mach Op CNC Offsets Gauging Blueprint Rgd LEAN/Six Sigma Mfg Shop Safety Speaking Principles Applied Math	CT	7/13- 1/22/16	20,599.49	420-342-1iba 420-343-2iba 420-344-1iba 420-345-2iba 421-376-1iba 623-146-1iba 625-125-1iba 801-302-1iba 804-370-1iba	7
2016-0060 2016-0061	DWFS-Malworth County Job Center	21	CNC Intro CNC Mach Op CNC Offsets Gauging Blueprint Rgd LEAN/Six Sigma Mfg Shop Safety Speaking Principles Applied Math	CT	7/13- 1/22/16	26,433.63	420-342-1eba 420-343-2eba 420-344-1eba 420-345-2eba 421-376-1eba 623-146-1eba 625-125-1eba 801-302-1eba 804-370-1eba	9

September 17, 2015

**Type of Service Recipient**

- 11=Public Educational Inst./K-12
- 13=Public Educ. Inst./K-12-Slotter
- 15=Multiple Educational Inst.
- 18=Public Educ. Inst./Postsecondary
- 19=Private Educational Institutions
- 21=WI Local Governmental Units
- 22=Indian Tribal Governments
- 23=Economic Development Corp.
- 24=County Board of Supervisors
- 25=Multiple Local Governmental Units
- 31=State of Wisconsin
- 32=WI Dept. of Corrections
- 33=WI Division of Voc. Rehabilitation
- 35=Multiple State Governmental Units
- 41=Business & Industry
- 42=Community Based Organization
- 43=Workplace Education initiative
- 44= WMEP Related Contracts
- 45=Multiple Business &/or Industries
- 47= WAT Grant
- 51=Federal Government
- 55=Multiple Federal Government Units
- 61=Foreign Governments
- 62=States Other Than WI
- 63=Out of State Businesses

**Type of Service**

- C=Customized Instruction
- T=Technical Assistance
- F=Fiscal & Management Service

District Contact \_\_\_\_\_ Date \_\_\_\_\_

District Contact \_\_\_\_\_ Date \_\_\_\_\_  
I affirm that the foreign and out-of-state contracts in this report are in compliance with the requirements of s.38.14(3), Wisconsin Statutes.

President \_\_\_\_\_ Date \_\_\_\_\_

**38.14 CONTRACT REPORT  
FOR THE PERIOD OF AUGUST 2015**

Gateway Technical College  
Contracts Under \$500.00

Contract Number	Company & City	Type of Recipient	Services	Type of Service	Dates	Estimated Cost of Service	Course Number	Number Served
2015-0415	Educator's Credit Union	41	Tobi Weingart	TA	6/17-8/31/15	155.00	900-019-1M1A	1

**Type of Service Recipient**

- 11=Public Educational Inst./K-12
- 13=Public Educ. Inst./K-12-Slotter
- 15=Multiple Educational Inst.
- 18=Public Educ. Inst./Postsecondary
- 19=Private Educational Institutions
- 21=WI Local Governmental Units
- 22=Indian Tribal Governments
- 23=Economic Development Corp.
- 24=County Board of Supervisors
- 25=Multiple Local Governmental Units
- 31=State of Wisconsin
- 32=WI Dept. of Corrections
- 33=WI Division of Voc. Rehabilitation
- 35=Multiple State Governmental Units
- 41=Business & Industry
- 42=Community Based Organization
- 43=Workplace Education initiative
- 44=WMEP Related Contracts
- 47 WAT Grant
- 45=Multiple Business &/or Industries
- 51=Federal Government
- 55=Multiple Federal Government Units
- 61=Foreign Governments
- 62=States Other Than WI
- 63=Out of State Businesses

**Type of Service**

- C=Customized Instruction
- T=Technical Assistance
- F=Fiscal & Management Service

District Contact \_\_\_\_\_ Date \_\_\_\_\_

District Contact \_\_\_\_\_ Date \_\_\_\_\_

I affirm that the foreign and out-of-state contracts in this report are in compliance with the requirements of s.38.14(3), Wisconsin Statutes.

President \_\_\_\_\_ Date \_\_\_\_\_

# Business & Workforce Solutions Contracts for Service - FY15

Contract Number	ATC	Company	Company Person	Company Contact Person	Gateway Contact Person	Status	Dates	Course Name	Course Number	Crise End Date	Instructor	Est. Cost
2015-0001		Gateway Technical College	Jennifer Charpentier	Rick Lofy		billed on 2014-0328		CNC Boot Camp XIX		8/1/14		0.00
2014-0328		Foundation Inc										
2015-0002		Burlington High School	Mike Raether	Jo Hart		billed 12/16/14	9/2-11/25/14	Nursing Assistant	543-300-2BBA	11/25/14	Jo Hart	2,195.85
2015-0003		Waterford High School	Keith Brandstetter	Jo Hart		billed 12/16/14	9/2-11/25/14	Nursing Assistant	543-300-2BBB	11/25/14	Jo Hart	2,195.85
2015-0004		Waterford										
2015-0004		Burlington High School	Mike Raether	Jo Hart		billed 12/16/14	9/2-12/9/14	Nursing Assistant	543-300-2BB1	12/9/14	Jo Hart	1,756.68
2015-0005		Burlington										
2015-0005		Waterford High School	Keith Bradstetter	Jo Hart		billed 12/16/14	9/2-11/25/14	Nursing Assistant	543-300-2BB2	12/9/14	Jo Hart	1,317.51
2015-0006		Waterford										
2015-0006		Badger High School	Robert Kopydowski	Jo Hart		billed 12/16/14	9/2-12/9/14	Nursing Assistant	543-300-2ZBA	12/9/14	Jo Hart	2,195.85
2015-0007		Lake Geneva										
2015-0007		Wilmot High School	Joel Adamczyk	Jo Hart		billed 12/16/14	9/2-12/9/14	Nursing Assistant	543-300-2ZBB	12/8/14	Jo Hart	439.17
2015-0008		Wilmot										
2015-0008		Central High School	Gail Netzer-Jensen	Jo Hart		billed 12/16/14	9/3-12/8/14	Nursing Assistant	543-300-2EB1	12/8/14	Jo Hart	4,391.70
2015-0009		Salem										
2015-0009		East Troy High School	Kimberly Penza	Jo Hart		billed 12/16/14	9/3-12/8/14	Nursing Assistant	543-300-2EB2	12/2/14	Jo Hart	439.17
2015-0010		East Troy										
2015-0010		Eikhorn High School	Tina Bosworth	Jo Hart		billed 12/16/14	9/2-12/2/14	Nursing Assistant	543-300-2EBA	12/2/14	Jo Hart	4,391.70
2015-0011		Elkhorn										
2015-0011		Delavan/Darien High School	Cora Rund	Jo Hart		billed 12/16/14	9/2-12/2/14	Nursing Assistant	543-300-2EBB	12/2/14	Jo Hart	3,074.19
2015-0012		Delavan										
2015-0012		InSinkErator	Lynn Olesen	Richard Hanson		sent 2/20/15	Fall 2014	Courses and supplies	103-102-2zba 462-103-2zba 462-106-2zba 620-111-2zba 606-121-2zba 804-370-2zba	12/31/14	R Hanson D Neuman Sanderson	0.00
2015-0015		Racine										
2015-0013		Insinkerator	Lynn Olesen	Richard Hanson		billed 1/9/15	Fall 2014	TA Training Center	900-003-2M1A	12/31/14	R Hanson D Neuman Sanderson	79,050.00
2015-0019		Kenosha County Job Center	Rich Salisbury	Rick Lofy		billed on 2014-0345		CNC Boot Camp XIX				0.00
2014-0345		Kenosha										
2015-0020		TAA-Kenosha	Esperanza Reece	Rick Lofy		cancelled 5/10/14		CNC Boot Camp XIX				0.00
2014-0348		Cancelled										
2015-0021		Racine	Bradley Haag	Jo Hart		billed 8/4/14	7/28-7/29/14	Blood Pressure	510-407-1RBA,B	7/19/14	Jo Hart	1,404.52
2015-0024		Kenosha Fire Department	Chief Poltrock	Gary Leyer		billed 6/30	6/25/2014	EMS CE 8hr	531-805-1BBA	6/25	B O'Connell	597.96
2015-0025		Kenosha										
2015-0025		Werner Electric	Amanda Marsicke	Randy Reusser		sent to billing 0-22-14	7/30/14-7/31/14	Technical Assistance	900-019-1m1w	7/31/14	R. Reusser	1,296.00
2015-0025		Neenah										
2015-0036		Temper High School	Mark Hinterberg	Julie Capelli		billed 11/7	9/3-10/29/14	Nursing Assistant	543-300-2Z1A	10/29	J Capelli	5,270.04
2015-0037		Racine										
2015-0037		KUSD Indian Trail Academy	Mark Hinterberg	Julie Capelli		billed 11/7	9/3-10/30/14	Nursing Assistant	543-300-2Z1B	10/30	J Capelli	8,451.36
2015-0037		Kenosha										



Contract Number	ATC	Company	Company Person	Company Contact Person	Gateway Contact Person	Status	Dates	Course Name	Course Number	Crse End Date	Instructor	Est. Cost
2015-0038		KUSD Tremper High School <b>CANCELLED</b>	Mark Hinterberg	Mark Hinterberg	Julie Capelli	cancelled	11/3-1/14/15	Nursing Assistant	543-300-2Z1C	1/14	J Capelli	0.00
2015-0039		KUSD Indian Trail Academy Kenosha	Mark Hinterberg	Mark Hinterberg	Julie Capelli	Sent to billing 1/30	11/3-1/19/15	Nursing Assistant	543-300-2Z1D	1/19	J Capelli	4,830.87
2015-0040		Gateway Technical College Foundation Inc	Jennifer Charpentier	Jennifer Charpentier	Robin Hoke	billed 12/2/14	10/13-11/13/14	Nursing Assistant	543-300-2R1G	11/13	J. Capelli	5,270.04
2015-0041		United Hospital System Kenosha	Nick Gaich	Nick Gaich	Michele Talhami	Sent to billing 9/8/14	8/614-8/21/14	Excel 1 Excel 2 Excel 3	103-417c-1zbu 103-432c-1zbu 103-466-1zbu	8/15	K. Sanderson	5,287.40
2015-0051		Gateway Technical College Foundation Inc (CNC High School Boot Camp 2)	Jennifer Charpentier	Jennifer Charpentier	Rick Lofy	billed 3/20/15	7/14-1/23/15	CNC Intro CNC Mach Op CNC Offsets Gauging Blueprint Rdg LEAN/Six Sigma Mfg Shop Safety Speaking Principles Applied Math	420-342-2lba 420-343-2lba 420-344-2lba 420-345-1lba 421-376-1lba 623-146-1lba 625-125-1lbb 801-302-1lbb 804-370-1lbb	1/23	R Reusser Cayenberg R Wall N Petersen S Yousuf T Quinn R Lofy	33,481.37
2015-0061		MPC WATG 173 Walworth	Mary Backenger	Mary Backenger	Lauri Howard	Sent to billing 11/20/14	7/18/14-8/31/15	Quality Assurance Supervision 1 Leadership Coaching	623-194-1ZBA 623-194-1ZBB 196-833-1ZBW 196-899-1zbw	8/31/14	L. Oplarka	18,858.00
2015-0066		NC3	Roger Tadjewski	Roger Tadjewski	Larry Hobbs	billed 7/29/14	7/5-7/19/14	Train the Trainer	900-003-1KM1	7/19/14	L Hobbs T Niesen J Palacek R Gordon M Janisin	8,250.00
2015-0067		NC3 Edmond, OK	Roger Tadjewski	Roger Tadjewski	D. Davidson	Sent to billing 10/9	7/1/14-9/30/14	Technical Assistance - Train the Trainer	900-003-1m11	9/30/14	M. Janisin	5,000.00
2015-0068		KUSD LakeView Technology Center	Mark Hinterberg	Mark Hinterberg		billed 11/7	9/2-10/30/14	IT Essentials Routing CCNA 2	107-193-2L1A&B 150-124-2l1b	10/30/14	Pam See	19,948.32
2015-0069		KUSD LakeView Technology Center	Mark Hinterberg	Mark Hinterberg		Sent to billing 1/30/15	11/3-1/22/15	Network Concepts Web Programming	150-114-2L1A&B 152-148-2L1A	1/22/15	Pam See	24,760.53
2015-0070		KUSD LakeView Technology Center	Mark Hinterberg	Mark Hinterberg		billed 4/16/15	1/26-3/26/15	Routing CCNA 2 Game Prog I	150-124-3L1A&B 152-157-3L1A	3/26/15	Pam See	20,563.83
2015-0071		KUSD LakeView Technology Center	Mark Hinterberg	Mark Hinterberg		sent 5/19/15	1/26-6/4/15	A+ Essentials Review	107-009-3L1a&B	4/23/15	Pam See	7,057.00
2015-0072		RCWDC Racine	Sue Lemanski	Sue Lemanski	Beth Tilley	PAID	7/7/14-8/8/14	Tech Assist - CDL	900-019-1m1g	8/8/14	Eagle	3,750.00
2015-0073		WCEDA Elkhorn	Cathy Anderson	Cathy Anderson	Richard Hanson	sent to billing 10-22-14	9/15/14-10/27/14	Funda of Supv 2	196-465-2ebw	10/27/14	R. Hanson	1,860.00
2015-0074		Kenosha Police Dept. Kenosha	Billing Office	Billing Office	Molly Meagher	Sent to billing 8/11/14	7/14/14-7/18/14	Firearms Instructor	504-467-1k1b	7/18/14	R. Merlin	2,370.00
2015-0076		Caterpillar College Kenosha	Rachel Israel-Quinn	Rachel Israel-Quinn	John Dahms	Cancelled	7/24/2014	Fire Ext. Training	503-447-1zbf	7/24/14	B. Pagliaroni	0.00
2015-0079		Kenosha Fire Department	Kendra Martineli	Kendra Martineli	Terry Simmons	billed 8/14/14	8/8/2014	EMS CE 4hr	531-801-1BBA	8/14/14	M Mansell	251.60

Contract Number	ATC	Company	Company Person	Company Contact Person	Gateway Contact Person	Status	Dates	Course Name	Course Number	Crse End Date	Instructor	Est. Cost
2015-0080		Gateway Technical College Foundation Inc.	K	Jennifer Charpentier	Rick Lofy	billed 2/19/15	12/5/2014	CNC Intro CNC Mach Op CNC Offsets Gauging Blueprint Rdg LEAN/Six Sigma Mfg Shop Safety Speaking Principles Applied Math	420-342-2lbb 420-343-2lbb 420-344-2lbb 420-345-2lba 421-376-2lba 623-146-2lba 625-125-2lba 801-302-2lba 804-370-2lba	12/15/14	R Lofy Lou Neil R Wall Petersen R Hanson T Quinn	31,457.60
2015-0081		Vision Plastics	W	Pat Jacobs	Lauri Howard	FA14 sent to billing 3-17-15 SP15 to BO 6-1	10/7/14-tbd	Beg. Project Adv Project Supervision	103-404b-2eba 103-404a-2ebc	TBD	K. Sanderson	7,148.00
2015-0082		Compass Minerals Kenosha	K	Kendra Martineli	Kim Sanderson	Sent to billing 9-16-14	7/30/14-8/20/14	Intro to PCS-Office 2010	103-418h-1zba 103-418h-1zbb	8/20/14	K. Sanderson	2,730.00
2015-0083		Birds Eye Foods	W	Ken Kline	Lauri Howard	Sent to billing 2-16-15	8/4/14-8/15/14	Fund. Robotic Systems	628-410-1eba	8/15/14	JD Jones	2,954.00
2015-0084		WATG 141 Darien	W	Mike Hinske	Mary Blue	billed 9/4	2014fa-2015sp	TA-technical support	900-019-2M11	May 15	TA	6,000.00
2015-0085		Big Foot High School Walworth	W	Eric Burling	Mary Blue	billed 9/4	2014fa-2015sp	TA-technical support	900-019-2M12	May 15	TA	6,000.00
2015-0086		Burlington High School Burlington	R	Lisa Albrecht	Mary Blue	billed 9/4	2014fa-2015sp	TA-technical support	900-019-2M13	May 15	TA	6,000.00
2015-0087		Westosha High School Salem	K	Jason Tadlock	Mary Blue	billed 9/4	2014fa-2015sp	TA-technical support	900-019-2M14	May 15	TA	6,000.00
2015-0088		Elkhorn High School Elkhorn	W	Scott Everson	Mary Blue	billed 9/4	2014fa-2015sp	TA-technical support	900-019-2M15	May 15	TA	6,000.00
2015-0089		Evansville High School Evansville	O	Gaye-Lynn Clyde	Mary Blue	billed 9/4	2014fa-2015sp	TA-technical support	900-019-2M16	May 15	TA	2,000.00
2015-0090		Milwaukee Public Museum Milwaukee	O	Alan Mollerskov	Mary Blue	billed 9/4	2014fa-2015sp	TA-technical support	900-019-2M1E	May 15	TA	6,000.00
2015-0091		Union Grove High School Union Grove	R	Keith Brandstetter	Mary Blue	billed 9/4	2014fa-2015sp	TA-technical support	900-019-2M18	May 15	TA	6,000.00
2015-0092		Waterford High School Waterford	R	Marty McGinley	Mary Blue	billed 9/4	2014fa-2015sp	TA-technical support	900-019-2M19	May 15	TA	6,000.00
2015-0093		Wheatland High School Wheatland	K	Dan Kopp	Mary Blue	billed 9/4	2014fa-2015sp	TA-technical support	900-019-2M1A	May 15	TA	6,000.00
2015-0094		Wilmington High School Wilmington	K	Wayne R. Anderson	Mary Blue	billed 9/4	2014fa-2015sp	TA-technical support	900-019-2M1B	May 15	TA	6,000.00
2015-0095		Williams Bay High School Williams Bay	W	Connie Gartner	Mary Blue	billed 9/4	2014fa-2015sp	TA-technical support	900-019-2M1C	May 15	TA	2,000.00
2015-0096		W1 School For the Deaf Delavan	W									

Contract Number	ATC	Company	Company Person	Company Contact Person	Gateway Contact Person	Status	Dates	Course Name	Course Number	Crse End Date	Instructor	Est. Cost
2015-0099		Kenosha County Job Center	K	Rich Salisbury	Rick Lofy	billed 2/19/15	9/2-12/5/14	CNC Intro CNC Mach Op CNC Offsets Gauging Blueprint Rdg LEAN/Six Sigma Mfg Shop Safety Speaking Principles Applied Math	420-342-21bk 420-343-21bk 420-344-21bk 420-345-21bk 421-376-21bk 623-146-21bk 625-125-21bk 801-302-21bk 804-370-21bk	12/5	R Lofy Lou Neil R Wall Petersen R Hanson T Quinn	22,852.80
2015-0100		Elkhorn High School Elkhorn	E	Chris Trottier	Mary Blue	billed 12/22/14	9/2-12/11/14	ASL I	533-126-2ZBA	12/11/14	Mary Mair	4,166.70
2015-0101		Waterford High School Waterford	R	Keith Brandstetter	Mary Blue	billed 12/22/14	9/2/-12/11/14	Dev Psychology	809-188-2ZBA	12/11/14	Colleen Aird	1,657.68
2015-0102		Union Grove High School Union Grove	R	Alan Mollerskov	Mary Blue	billed 12/22/14	9/2-12/11/14	Dev Psychology	809-188-3ZBB	12/11/14	Colleen Aird	2,072.10
2015-0103		Union Grove High School Union Grove	R	Alan Mollerskov	Mary Blue	billed 12/22/14	9/2-12/11/14	Med Terminology	501-101-2EBA	12/11/14	R Formanek	4,558.62
2015-0104		Big Foot High School Lake Geneva	W	Heidi McGraw	Mary Blue	billed 12/22/14	9/2-12/11/14	Med Terminology	501-101-2EBB	12/11/14	R Formanek	2,072.10
2015-0105		Williams Bay High School Williams Bay	W	William White	Mary Blue	billed 12/22/14	9/2-12/11/14	ASL I	533-126-2ZBL	12/11/14	Mary Mair	1,111.12
2015-0106		Waterford High School Waterford	R	Keith Brandstetter	Mary Blue	billed 12/22/14	9/2-12/11/14	ASL I	533-126-2ZBB	12/11/14	Mary Mair	6,666.72
2015-0107		Waterford High School Waterford	R	Keith Brandstetter	Mary Blue	billed 12/22/14	9/2-12/11/14	Intro to Psychology	809-198-2ZBA	12/11/14	Colleen Aird	6,630.72
2015-0108		Waterford High School Waterford	R	Keith Brandstetter	Mary Blue	billed 12/22/14	9/2-12/11/14	Intro to Psychology	809-198-2ZBB	12/11/14	Colleen Aird	5,801.88
2015-0109		Waterford High School Waterford	R	Keith Brandstetter	Mary Blue	billed 12/22/14	9/2-12/11/14	Intro to Programming	152-126-2ZBA	12/11/14	Saad Yousuf	9,512.52
2015-0110		Williams Bay High School Williams Bay	W	William White	Mary Blue	billed 12/22/14	9/2-12/11/14	ASL I	533-126-2ZBC	12/11/14	Mary Mair	833.34
2015-0111		Big Foot High School Cancelled				Canc.						
2015-0112		Burlington High School Burlington	R	Mike Raether	Mary Blue	billed 12/22/14	9/2-12/11/14	Med Terminology	501-101-2EBC	12/11/14	R Formanek	2,900.94
2015-0113		Waterford High School Waterford	R	Keith Brandstetter	Mary Blue	billed 12/22/14	9/2-12/11/14	Intro to Sociology	809-196-2ZBA	12/11/14	Colleen Aird	6,630.72
2015-0114		Union Grove High School Union Grove	R	Alan Mollerskov	Mary Blue	billed 12/22/14	9/2-12/11/14	Intro to Sociology	809-196-2ZBB	12/11/14	Colleen Aird	1,243.26
2015-0115		Big Foot High School Lake Geneva	W	Heidi McGraw	Mary Blue	billed 12/22/14	9/2-12/11/14	ASL I	533-126-2ZBE	12/11/14	Mary Mair	833.34
2015-0116		Elkhorn High School Elkhorn	W	Chris Trottier	Mary Blue	billed 12/22/14	9/2-12/11/14	ASL I	533-126-2ZBF	12/11/14	Mary Mair	3,888.92
2015-0117		Burlington High School Burlington	R	Mike Raether	Mary Blue	billed 12/22/14	9/2-12/11/14	Chinese I	802-114-2ZBA	12/11/14	Xin Lin Hill	1,243.26
2015-0118		Westosha Central High School Salem	K	Gail Netzer-Jensen	Mary Blue	billed 12/22/14	9/2-12/11/14	Chinese I	802-114-2ZBB	12/11/14	Xin Lin Hill	414.42
2015-0119		Elkhorn High School Elkhorn	W	Chris Trottier	Mary Blue	billed 12/22/14	9/2-12/11/14	Chinese I	802-114-2ZBC	12/11/14	Xin Lin Hill	828.84

Contract Number	ATC	Company	Company Person	Gateway Contact Person	Status	Dates	Course Name	Course Number	Crse End Date	Instructor	Est. Cost
2015-0120		Waterford High School			billed 12/22/14						0.00
2015-0121		Cancelled Evansville High School Evansville	Scott Everson	Mary Blue	billed 12/22/14	9/2-12/11/14	ASL I	533-126-2ZBG	12/11/14	Mary Mair	277.78
2015-0122		Union Grove High School Union Grove	Alan Mollerskov	Mary Blue	billed 12/22/14	9/2-12/11/14	ASL I	533-126-2ZBH	12/11/14	Mary Mair	1,111.12
2015-0123		Burlington High School Burlington	Mike Raether	Mary Blue	billed 12/22/14	9/2/-12/11/14	ASL I	533-126-2ZBI	12/11/14	Mary Mair	2,500.02
2015-0124		Westosha Central High School Salem	Gail Netzer-Jensen	Mary Blue	billed 12/22/14	9/2-12/11/14	ASL I	533-126-2ZBJ	12/11/14	Mary Mair	1,388.90
2015-0125		Elkhorn High School Elkhorn	Chris Trottier	Mary Blue	billed 12/22/14	9/2-12/11/14	ASL I	533-156-2ZBK	12/11/14	Mary Mair	3,611.14
2015-0126		Williams Bay High School Williams Bay	William White	Mary Blue	billed 12/22/14	9/2/-12/11/14	ASL I	533-156-2ZBM	12/11/14	Mary Mair	833.34
2015-0127		Big Foot High School Lake Geneva	Heidi McGraw	Mary Blue	billed 12/22/14	9/2-12/11/14	Intro to Programming	152-126-2KBA	12/11/14	A Pearson	5,595.60
2015-0128		Union Grove High School Union Grove	Alan Mollerskov	Mary Blue	billed 12/22/14	9/2-12/11/14	Intro to Programming	152-126-2KBB	12/11/14	A Pearson	2,979.80
2015-0129		Burlington High School Burlington	Mike Raether	Mary Blue	billed 12/22/14	9/2/-12/11/14	Intro to Programming	152-126-2RBA	12/11/14	Ty Kinis	559.56
2015-0130		Westosha Central High School Salem	Gail Netzer-Jensen	Mary Blue	billed 12/22/14	9/2-12/11/14	Intro to Programming	152-126-2RBB	12/11/14	Ty Kinis	3,916.92
2015-0131	66	Elkhorn High School	Chris Trottier	Mary Blue	billed 12/22/14	9/2-12/11/14	ASL 3	533-128-2ZBA	12/11/14	Mary Mair	1,944.46
2015-0132	66	Elkhorn High School	Mike Raether	Mary Blue	billed 12/22/14	9/2/-12/11/14	ASL 3	533-128-2ZBB	12/11/14	Mary Mair	555.56
2015-0133	66	KUSD/LakeView Pleasant Prairie	Mark Hinterberg		billed 11/19/14	9/2-10/30/14	Comp Assist Prog Mech Skills CIM PLTW I Pneu/Hyd	628-111-2L1A 628-109-2L1A 628-123-2L1A 612-102-2L1A	10/30	J Nelson	19,951.45
2015-0134		KUSD/LakeView Pleasant Prairie	Mark Hinterberg		billed 1/30/15	9/29-1/26/15	CIM PLTW II Mech Tech Pneu/Hyd Quality for AMST DCAC	628-124-2L1A 628-1019-2L1B 612-102-2L1C 628-125-2L1A 605-113-2L1A	1/26	J Nelson	34,605.26
2015-0135		InSinkErator Racine	Casey Doolan	Gary Leyer	Sent to billing 9/16/14	8/26/14- 8/27/14	HCP CPR Recertification	531-426a- 1zba,1zbb,1zbc	8/27/14	B. Riden L. Gums	1,860.00
2015-0136		MTI Global Hillsboro OR	Tristan Clevidence	Randy Reusser	Sent to BO 6/5/15	Fall 2014	BICS/ Installer Technical Assistance	150-411-2CBM 900-019-2CBM		R. Ruesser	10,388.00
2015-0138		Walworth County Jail Elkhorn	Kevin Brunner	Sharyn Palmer	Sent to billing 1/7/15	9/5/14- 12/8/14	Math 200 ABE Lab Supervision	854-750-2zr1j 890-721-2zr1j 900-020-2zr1j	12/8/14	S. Palmer	9,996.00
2015-0143		Fair Oaks Farms Pleasant Prairie CANCELLED	Todd Campbell	John Dahms	Canc.	9/15/2014	Ext. Training	503-447-2zbx 503-447-2zby			0.00
2015-0144		Johnson Wax Racine	Patrice Bishop	Dan Neuman	billed 10/3/14	7/16-8/11/14	TA	900-003-1M1A	8/11/14	D Neuman	2,480.00
2015-0147		Kenosha Fire Department Kenosha	Chief Poltrock	Terry Simmons	billed 11/24/14	11/4- 11/18/14	EMS CE 8hr CE 4hr	531-805-2kba,b,c 531-801-2kba,b,c	11/18	O'Connell V Hulback	2,170.20

Contract Number	ATC	Company	Company Contact Person	Gateway Contact Person	Status	Dates	Course Name	Course Number	Crse End Date	Instructor	Est. Cost
2015-0148		KABA Kenosha	Todd Battle	Richard Hanson	sent to billing 10-22-14	8/20/14- 9/19/14	Fund. of Supv. 1	196-461-1zbk	9/19/14	R. Hanson	1,860.00
2015-0149		NC3 Kenosha	Roger Tadjewski	Debbie Davidson	billed 1/7/15	9/1-12/31/14	TA Matt Janisin	900-019-2M1F 900-019-2M1G	12/31	M Janisin	4,850.00
2015-0150		RUSD Park High School Racine		Debbie Davidson	DH billed 11/5/14	9/2014- 6/2015	TA	602-104-2Z1A 602-124-2Z1A	6/20/15	J Kobriger	115,440.00
2015-0151		RUSD/Park High School Racine		Debbie Davidson	DH billed 11/5/14	1/26-6/10/15	Electrical & Electronic Systems	602-127-3Z1A	6/10	J Kobriger	28,860.00
2015-0152		Badger High School Lake Geneva	Robert Kopydlowski	transcripted	billed 4/1/15	2014 Fall	Sports/Ent Entrepreneurship I Development Culinary Arts I ProStart Complete Culinary Arts Medical Terminology Auto 2 Auto 1 Auto 3 Electronics Electronics Digital	104-109T-2ZTB 145-119T-2ZTA,B 307-151T- 2ZTA,B,C 316- 131T-2ZTA 316-136T-2ZTA 316-170T-2ZTA 501-101T-2ZTA 602-104T-2ZTA,B 602-107T- 2ZTA,B,C,D 602- 125T-2ZTA 605-113T-2ZTA,B 605-113T-2ZTB	6/9/15	V Kirk Giovingo R Tronsen S Sherman T Sheeley J Popanda	134,087.33
2015-0153		School District of Beloit Beloit	Alis Lohff	transcripted	billed 4/1/15	2014 Fall	Auto Svc Fund	602-107T-2ZTE,F	6/11/15	A Troxell	4,892.52
2015-0154		Burlington High School Burlington	Mike Raether	transcripted	billed 2/10	2014 Fall	Personal Financial	114-101T- 2ZTA,B,D	1/25/15	J Gribble	20,306.58
2015-0155		Delavan/Darien High School Delavan	Cora Rund	transcripted	billed 2/10	2014 Fall	Physical Earth, AG Ph Earth AG Science	001-147T-2ZBA,B 001-148T-2ZTA	1/25/15	M Speth	4,234.20
2015-0156		East Troy High School East Troy	Kimberly Penza	transcripted	billed 3/12/15	2014 Fall	Comp for Prof	103-143T-2ZTA	1/23/15	D Leising	3,105.08
2015-0157		Elkhorn High School Elkhorn	Chris Trottier	transcripted	billed 4/1/15	2014 Fall	Acc Principles for Prof Marketing Princ Retailing App Pers Fin Planning Medical Terminology	101-114T-2ZTA 103-143T-2ZTB,C 104-101T-2ZTA,B 104-127T-2ZTA 106-137T-2ZTA,B 114-101T-2ZTC 501-101T-2ZTB	6/5	J Pella Bruegeman D Anderson L Anzalone S Steinke	62,068.83
2015-0158		KUSD/HarborSide Academy Kenosha	Kimberly Penza	transcripted	billed 4/1/15	2014 Fall	Intro to Dig Photo	204-107T-2ZTA,B	6/11	S Henkel	15,457.86
2015-0159		KUSD/Indian Trails Academy Kenosha	Mark Hinterberg	transcripted	billed 4/1/15	2014 Fall	Intro to Business Entrepreneurship I Illustration Media Medical Terminology Intro to Healthcare	102-137T-2ZTF,G 145-119T-2ZTE 204-125T-2ZTA,B 501-101T-2ZTF 501-107T-2ZTA	6/11	H Paulson S Bleser T Metzler	39,162.86
2015-0160		KUSD/LakeView Technology Center Pleasant Prairie	Mark Hinterberg	transcripted	billed 2/10/15	2014 Fall	Intro to Networking Concepts Digital	150-150T-2ZTA,B 605-130T-2ZTA	1/23	H Townd Garringer	23,237.85
2015-0161		KUSD/Tremper High School Kenosha	Mark Hinterberg	transcripted	billed 4/1/15	2014 Fall	Fut Trends in EI AutoCad Mech	605-183T-2ZTA 606-141T-2ZTA,B	6/11	P Ackland	22,818.18

Contract Number	ATC	Company	Company Contact Person	Gateway Contact Person	Status	Dates	Course Name	Course Number	Crse End Date	Instructor	Est. Cost
2015-0162		RUSD/Case High School Racine	R Bradley Haag	transcripted	billed 3/16/15	2014 Fall	Intro to Business Business Law Retailing Keyboarding App Entrepreneurship	102-137T-2ZTA 102-160T-2ZTC 104-127T-2ZTC 106-137T-2ZTC 145-119T-2ZTC	1/23	Wartzenluft Gwen Clark	34,082.19
2015-0163		RUSD/Horlick High School Racine	R Bradley Haag	transcripted	billed 3/16/15	2014 Fall	Intro to Business Retailing Keyboarding Apps	102-137T-2ZTB 104-127T-2ZTE 106-137T- 2ZTE-F.G.I.	1/23	M Dawson McClanahan Jennifer Sus	29,681.07
2015-0164		RUSD/Park High School Racine	R Bradley Haag	transcripted	billed 3/16/15	2014 Fall	Intro to Business Retailing Keyboarding Apps	102-137T- 2ZTC,D,E 104- 127T-2ZTD	6/10	A Greiner A Betker J Browarski	27,026.55
2015-0165		REAL High School	o Jackie Brown	transcripted	billed 3/16/15	2014 Fall	Business Law Keyboarding	106-137T-2ZTH 102-160T-2ZTA 106-137T-2ZTI	1/23	L Schmidt	13,371.69
2015-0166		Union Grove High School Union Grove	R Alan Mollerskov	transcripted	billed 3/16/15	2014 Fall	Business Law Comps for Professionals Keyboarding Apps Entrepreneurship I Culinary Skills I Sanitation & Hyg	102-160T-2ZTB 103-143T-2ZTE,F 106-137T-2ZTJ,K 145-119T-2ZTD 316-131T-2ZTD 316-170T- 2ZTB,C,D	1/19	W Couy T Vandebogert	52,144.83
2015-0167		Waterford High School Waterford	R Keith Brandstetter	transcripted	billed 3/16/15	2014 Fall	Accounting Principles Photography Illustration Media Culinary I Medical Terminology	101-114T-2ZTB 204-107T-2ZTC,D 204-125T-2ZTC 316-131T-2ZTC 501-101T-2ZTC	6/6	Jill Hanson L Durkowitz C Buelow J Tommm	46,077.16
2015-0168		School District of West Allis West Allis	O Deb Glowacki	transcripted	billed 4/1/15	2014 Fall	Auto Svc Fund	602-107-2ZTG,H	6/12	Matt Kerhin	6,115.60
2015-0169		Westosha High School Salem	K Gail Netzer-Jensen	transcripted	billed 4/1/15	2014 Fall	Comp for Prof Marketing Principles Sports & Events Mktg IT Essentials Princ of Interior Design ECE: Health, Safety, Nutr Culinary Skills I Medical Terminology	103-143T-2ZTD 104-101T-2ZTC 104-109T-2ZTA 107-193T-2ZTA 304-155T-2ZTA 307-167T-2ZTA 316-131T-2ZTB 501-101T-2ZTD,E	6/12	C Belan M Bahson G Pongratz D Laabs C Halladay Menebroekr	60,426.62
2015-0170		Whitewater High School Whitewater	W Doug Parker	transcripted	billed 4/1/15	2014 Fall	Auto Svc Fund	602-107T-2ZTI,J	6/11	Mike Wintz	9,173.40
2015-0171		Wilmot High School Wilmot	K Joel Adamczyk	transcripted	billed 4/1/15	2014 Fall	Comps for Prof Marketing Principles Retailing ECE:Practicum I Auto Service Fund	103-143T-2ZTG,H 104-101T-2ZTD,E 104-127T-2ZTF,B 307-147T-2ZTA 602-107T-2ZTK,L	6/5	J Erbenraut S Younger C Kothe D Cooper Oehmichen J Kabane	47,686.38
2015-0172		Gateway Technical College Foundation, Inc.	K Jennifer Charpentier	Robbin Hoke	billed 11/11/14	2014 Fall	Certified Logistics Assist Certified Logistics Tech Forklift Training	625-407-2IBA 625-408-2IBA 443-412-2HBA,B	11/1	J Noelle C Sorget V Hinke	9,900.00
2015-0173		KUSD/Reuther High School Racine	R Mark Hinterberg	Julie Capelli	billed 1/30/15	11/3-1/22/15	ECE Health	307-167-2ZBA	1/22	M Munroe	4,973.04
2015-0175		Milw Electrical JATC INEW 494 Wauwatosa	O Kylie Krueger	Randy Reusser	Sent to billing 12-12	11/12/14- 12/10/14	Belden 726 Copper Belden 746 Fiber	150-406-2CB2 150-405-2CB2	12/10/14	R. Reusser	4,190.00
2015-0176		Milw Electrical JATC INEW 494 Wauwatosa	O Kylie Krueger	Randy Reusser	sent to billing 3-16-18	1/7/15- 3/18/15	BICS1 IN225 Copper	150-412-3CB2	3/18	R. Reusser	11,174.00
2015-0177		Dejno's Inc. Kenosha	K Joel Swift	Randy Reusser	sent to billing 12-2-14	10/7/14- 10/9/14	Basic Electricity Basic Elec. Tool Sfty	605-429c-2CBD 605-450-2CBD	10/9/14	R. Reusser	978.00

Contract Number	ATC	Company	Company Person	Company Contact Person	Gateway Contact Person	Status	Dates	Course Name	Course Number	Course End Date	Instructor	Est. Cost
2015-0178		Honeywell	Tom Anderson	K	Dan Neuman	Sent to billing 3/25/15	7/1/14 - 9/11/14	Precision Measuring Mech Power Trans	623-405A-1BZA, B, C 462-490-1ZBA, B, C	9/11	D. Neuman	14,715.00
2015-0378		Pleasant Prairie	Barbara Lange	R	Richard Hanson	FA14 sent to billing 3/17/15	9/17/14-10/1/14	Understand ISO IQA Machine Repair Root Cause Analysis Train the Trainer	623-448-2ZBR 623-471-2ZBR		R. Hanson	16,928.00
2015-0179		R&B Grinding WATG 174 Racine	Todd Battle	K	Richard Hanson	SP15 to BO 6-1-15	9/26/14-10/31/14	Fund. of Supv. 2	196-465-2ZBY	10/31	R. Hanson	1,860.00
2015-0180		KABA Kenosha	Jenny Trick	R	Richard Hanson	12-2-13	9/19/14-12/18/14	Fund. of Supv. 1	196-835-2zba	12/18/4	R. Hanson	0.00
2015-0181		RCEDC Sturtevant	Todd Battle	K	Richard Hanson	Sent to billing 12-11-14	11/7/14-12/17/14	Fund. of Supv. 3	196-460-2ZBA	12/17	R. Hanson	1,860.00
2015-0182		KABA Kenosha	Kim Turigialito	K	Rick Lofy	FA14 sent to billing 2/19/15	9/23/14-TBD	Zero Defects Problem Solving Constr. Feedback	623-818-2zba	TBD	R. Lofy	9,990.00
2015-0183		Syneject WATG 140 Delavan	Mark Hinterberg	K	Julie Capelli	sent 5/27/15	3/30-5/26/15	Medical Terminology	501-101-3Z1A	5/26	J Capelli	7,045.14
2015-0354		Whitewater High School	Doug Parker	W	Jo Hart	sent 5/11/15	1/26-5/1/15	Nursing Assistant	543-300-3ZBA		Jo Hart	4,391.70
2015-0355		Big Foot High School Walworth	Heidi McGraw	W	Jo Hart	sent 5/19/15	1/26-4/29/15	Nursing Assistant	543-300-3ZBB	4/29	Jo Hart	4,391.70
2015-0194		KUSD/Tremper High School Kenosha	Mark Hinterberg	K	Julie Capelli	billed 4/1/15	1/26-3/24/15	Nursing Assistant	543-300-3Z1A	3/24	J Capelli	5,709.21
2015-0395		KUSD/Indian Trail Academy Kenosha	Mark Hinterberg	K	Julie Capelli	billed 4/1/15	1/26-3/26/15	Nursing Assistant	543-300-3Z1B	3/26	J Capelli	3,513.36
2015-0196		KUSD/Indian Trail Academy Kenosha	Mark Hinterberg	K	Julie Capelli	sent 6/1/15	3/30-5/14/15	Nursing Assistant	543-300-3Z1C	5/14	J Capelli	7,465.89
2015-0197		Burlington High School Burlington	Mike Raether	R	Jo Hart	sent 5/11/15	1/26-5/1/15	Nursing Assistant	543-300-3BBA	5/1	Jo Hart	4,391.70
2015-0198		Waterford High School Waterford	Keith Brandstetter	R	Jo Hart	sent 5/7/15	1/26-5/1/15	Nursing Assistant	543-300-3BBB	5/1	Jo Hart	4,391.70
2015-0199		Burlington High School Burlington	Keith Brandstetter	R	Jo Hart	sent 5/12/15	1/27-4/30/15	Nursing Assistant	543-300-3BB2	4/30	Jo Hart	4,391.70
2015-0200		Waterford High School Waterford	Mike Raether	R	Jo Hart	sent 5/12/15	1/27-4/30/15	Nursing Assistant	543-300-3BB1	4/30	J Hart	4,391.70
2015-0201		Westosha High School Salem	Gail Netzer-Jensen	K	Jo Hart	sent 5/12/15	1/27-4/30/15	Nursing Assistant	543-300-3bb3	4/30	Jo Hart	4,391.70
2015-0202		East Troy High School East Troy	Kimberly Penza	W	Jo Hart	sent 5/12/15	1/27-4/30/15	Nursing Assistant	543-300-3BB4	4/30	Jo Hart	4,391.70
2015-0203		Badger High School Lake Geneva	Robert Kopydowski	W	Jo Hart	sent 5/12/15	1/26-4/29/15	Nursing Assistant	543-300-3ZBC	4/29	Jo Hart	4,391.70
2015-0204		Wilmot High School Wilmot	Joel Adamczyk	R	Jo Hart	cancelled	1/26-4/29/15	Nursing Assistant	543-300-3ZBD	4/29	Jo Hart	4,391.70
2015-0205		Elkhorn High School Elkhorn	Chris Trottier	W	Jo Hart	sent 5/19/15	1/12-4/27/15	Nursing Assistant	543-300-3EB1	4/27	Jo Hart	4,391.70

Contract Number	ATC	Company	Company Contact Person	Gateway Contact Person	Status	Dates	Course Name	Course Number	Crse End Date	Instructor	Est. Cost
2015-0206		Delavan/Darien High School Delavan CANCELLED	W Cora Rund	Jo Hart	cancelled	1/12-4/27/15	Nursing Assistant	543-300-3EB2	4/27	Jo Hart	0.00
2015-0207		Protect-All	W Liz Heller	Lauri Howard	Sent to billing 2-16-15	9/4/14-tbd	Lean Six Sigma BB Lean Operations	623-817-2zbp 623-812-2ZBP	1/6/15	R. Lofy	16,687.00
2015-0208		WATG 145 Darien	K Jeanne Leafblad	Kim Sanderson	Sent to billing 4/6/15	2/17/15- 3/17/15	Excel 1 PowerPoint1	103-417A-3ZBH 103-420H-3ZBH	3/17/15	K. Sanderson	3,375.00
2015-0218		Honeywell Cable Pleasant Prairie	K Jeanne Leafblad	Kim Sanderson	Sent to billing 3/16/15	11/14/14- 12/12/14	Word 1	103-476g-2ZBH	12/12/14	K. Sanderson	1,650.00
2015-0210		Honeywell Cable Pleasant Prairie	R John Thielen	Robin Hoke	Sent to billing 12-1-14	10/17/14- 10/24/14	Forklift Recertification	462-401a-2RBX	10/24/14	V. Hinke	188.00
2015-0211		Gateway Technical College Facilities - Racine	Jennifer Charpentier	Julie Capelli	billed 4/14/15	2/2-3/26/15	Nursing Assistant Boot Camp 4	543-300-3R1C	3/26	J Capelli	4,830.87
2015-0215		Gateway Foundation Inc. Kenosha	K Jack Rose	Molly Meagher	Sent to billing 11-12-14	9/15/14 - 9/19/14	Tech Assistance - CIT Training	900-019-2KF2	9/19/14	J. Rose	1,296.20
2015-0216		NAMI - Kenosha County Kenosha	K Jack Rose	Molly Meagher	Sent to billing 12-16-14	11/12/14- 11/13/14	Technical Assistance CIP Training	900-019-2K1A	11/13/14		2,237.58
2015-0217		NAMI Kenosha	R Ambra Caruthers	Can Neuman	billed 12/16/14	9/9-11/7/14	TA Dan Neuman APT Program	900-019-2M1D	11/7	D Neuman	1,860.00
2015-0219		Johnson Wax Racine	K Kim Sanderson	Kendra Martinellei	Sent to billing 3/25/15	11/14/14- 12/02/14	Excel 1	103-417c- 2CBM,2CBN	12/4/14	K. Sanderson	2,990.00
2015-0221		Compass Minerals Kenosha	Marsha Nelson	John Dahms	sent 5/20/15	1/27-5/5/15	Prin of Em Services	503-139-3ZBA	5/5	Radandt	6,806.72
2015-0222		KUSD/Indian Trail Academy Kenosha	O John Wallner	Randy Reusser	Sent to billing 12/17/15	12/11/14- 12/6/14	BICSI IN250 Technical Assistance	150-410-2CBF 900-019-2M1p	12/5/14	R. Reusser	5,658.00
2015-0228		Forest County Gaming - Multi Recip Milwaukee	O Rick Verbsky	Randy Reusser	Sent to billing 12/17/15	12/11/14- 12/6/14	BICSI IN250 Technical Assistance	150-410-2CBG 900-019-2M1p	12/5/14	R. Reusser	629.00
2015-0229		AVS - Multi Recip Black Creek	Linda Youngblood	Lauri Howard	billed 2/16/15	10/1- 12/31/14	TA-Liz Oplatka	900-019-2M1K	12/31	L Oplatka	6,896.64
2015-0231		Palmer Hamilton Elkhorn	K Jennifer Charpentier	Rick Lofy	billed 5/4/15	1/5-4/10/15	CNC Intro CNC Mach Op CNC Offsets Gauging Blueprint Rdg LEAN/Six Sigma Mfg Shop Safety Speaking Principles Applied Math	420-342-3ba 420-343-3ba 420-344-3ba 420-345-3ba 421-376-3ba 623-146-3ba 625-125-3ba 801-302-3ba 804-370-3ba	4/10	R Reusser R Wall N Peterson R Hanson T Quinn R R Lofy L Neil	47,200.00
2015-0230		Palmer Hamilton Black Creek	K Janine Frechette	Beth Tilley	inv 12-17	7/7/14-8/8/14	CDL Training	900-003-1m1f		Eagle	3,750.00
2015-0232		Palmer Hamilton Elkhorn	R Ira Mitchell-Zachary	Beth Tilley	inv 12-17	9/15/14- 10/17/14	CDL Training	900-003-2M1W		Eagle	3,750.00
2015-0233		Palmer Hamilton Elkhorn									
2015-0234		Palmer Hamilton Elkhorn									
2015-0235		Palmer Hamilton Elkhorn									
2015-0236		Palmer Hamilton Elkhorn									
2015-0237		Palmer Hamilton Elkhorn									
2015-0238		Palmer Hamilton Elkhorn									
2015-0239		Palmer Hamilton Elkhorn									
2015-0240		Palmer Hamilton Elkhorn									
2015-0241		Palmer Hamilton Elkhorn									
2015-0242		Palmer Hamilton Elkhorn									
2015-0243		Palmer Hamilton Elkhorn									
2015-0244		Palmer Hamilton Elkhorn									
2015-0245		Palmer Hamilton Elkhorn									
2015-0246		Palmer Hamilton Elkhorn									



Contract Number	ATC	Company	Company Contact Person	Gateway Contact Person	Status	Dates	Course Name	Course Number	Crse End Date	Instructor	Est. Cost
2015-0247		RCWDC Racine	Ashanti Ross	Beth Tilley	inv 12-17	10/20/14- 11/21/14	CDL Training	900-003-2M1C		Eagle	3,750.00
2015-0248		Walworth County Job Center Elkhorn	Jonathan Watts	Beth Tilley	inv 12-17	10/20/14- 11/21/14	CDL Training	900-003-2M1H		Eagle	3,750.00
2015-0249		Kenosha County Job Center Kenosha	Rich Salisbury	Beth Tilley	inv 12-17	9/15/14- 10/17/14	CDL Training	900-003-2M1K		Eagle	7,500.00
2015-0250		RCWDC Racine	Ashanti Ross	Beth Tilley	inv 12-17	8/11/14- 9/12/14	CDL Training	900-003-1M1R		Eagle	3,750.00
2015-0251		DVR Racine	Sharon White	Beth Tilley	inv 12-17	7/7/14-8/8/14	CDL Training	900-003-1M1V		Eagle	3,750.00
2015-0252		Kenosha County Job Center Kenosha	Rich Salisbury	Beth Tilley	inv 12-17	7/7/14- 9/12/14	CDL Training	900-003-1M1F		Eagle	22,500.00
2015-0253		DVR Racine	Sharon White	Beth Tilley	inv 12-17	8/11/14- 9/12/14	CDL Training	900-003-1M1W		Eagle	3,750.00
2015-0254		SCJ Grant Sturtevant	Robin Hoke	Beth Tilley	inv 12-17	10/20/14- 11/21/14	CDL Training	900-003-2M1J		Eagle	3,150.00
2015-0255		RCWDC Racine	Alonzo Payne	Beth Tilley	inv 12-17	8/11/14- 9/12/14	CDL Training	900-003-1M1Y		Eagle	3,750.00
2015-0256		Kenosha County Job Center	Doug Bartz	Rick Lofy	sent 5/4/15	1/5-4/10/15	CNC Intro CNC Mach Op CNC Offsets Gauging Blueprint Rdg LEAN/Six Sigma Mfg Shop Safety Speaking Principles Applied Math	420-342-3bak 420-343-3bak 420-344-3bak 420-345-3bak 421-376-3bak 623-146-3bak 625-125-3bak 801-302-3bak 804-370-3bak	4/10	R Reusser R Wall N Petersen R Hanson T Quinn R Lofy L Neil	8,850.00
2015-0261		Elkhorn High School Elkhorn	Chris Trotter	Mary Blue	sent 5/19/15	1/12-5/2/15	ASL 2	533-127-3ZBA	5/2	M Mair	6,666.72
2015-0262		Waterford High School Waterford	Keith Brandstetter	Mary Blue	sent 5/21/15	1/12-5/2/15	Dev Psychology	809-188-3ZBA	5/2	C Aird	9,946.08
2015-0263		Union Grove High School Union Grove	Alan Mollerskov	Mary Blue	sent 5/21/15	1/12-5/2/15	Dev Psychology	809-188-3ZBB	5/2	C Aird	9,946.08
2015-0264		Union Grove High School Union Grove	Alan Mollerskov	Mary Blue	sent 5/22/15	1/12-5/2/15	Med Terminology	501-101-3EBA	5/2	Formanek	9,946.08
2015-0265		Union Grove High School Union Grove	Alan Mollerskov	Mary Blue	sent 5/22/15	1/12-5/2/15	Med Terminology	501-101-3EBC	5/2	Formanek	9,946.08
2015-0266		Williams Bay High School Williams Bay	William White	Mary Blue	sent 5/22/15	1/12-5/2/15	ASL 2	533-127-3ZBB	5/2	M Mair	6,666.72
2015-0267		Waterford High School Waterford	Keith Brandstetter	Mary Blue	sent 5/22/15	1/12-5/2/15	ASL 2	533-127-3ZBC	5/2	M Mair	6,666.72
2015-0268		Big Foot High School Walworth	Heidi McGraw	Mary Blue	sent 5/22/15	1/12-5/2/15	ASL 2	533-127-3ZBM	5/2	M Mair	6,666.72
2015-0269		Waterford High School Waterford	Keith Brandstetter	Mary Blue	sent 5/22/15	1/12-5/2/15	Intro to Psychology	809-198-3ZBA	5/2	C Aird	9,946.08
2015-0270		Waterford High School Waterford	Keith Brandstetter	Mary Blue	sent 5/22/15	1/12-5/2/15	Intro to Psychology	809-198-3ZBB	5/2	C Aird	9,946.08
2015-0271		Waterford High School Waterford	Keith Brandstetter	Mary Blue	sent 5/22/15	1/12-5/2/15	Game Programming I	152-157-3KBA	5/2	C Hur	10,072.08

September 17, 2015

Contract Number	ATC	Company	Company Person	Gateway Contact Person	Status	Dates	Course Name	Course Number	Crse End Date	Instructor	Est. Cost
2015-0272		Evansville High School Evansville	Scott Everson	Mary Blue	sent 5/22/15	1/12-5/2/15	Game Programming I	152-157-3KBB	5/2	C Hur	10,072.08
2015-0273		Williams Bay High School Williams Bay CANCELLED	William White	Mary Blue	cancelled	1/12-5/2/15	ASL 2	533-127-3ZBD	5/2	M Mair	0.00
2015-0274		Waterford High School Waterford	Keith Brandstetter	Mary Blue	sent 5/22/15	1/12-5/2/15	Intro to Sociology	809-196-3ZBA	5/2	C Aird	9,946.08
2015-0275		Union Grove High School Union Grove	R Alan Mollerskov	Mary Blue	sent 5/22/15	1/12-5/2/15	Intro to Sociology	809-196-3ZBB	5/2	C Aird	9,946.08
2015-0276		Eikhorn High School Eikhorn	W Chris Trottier	Mary Blue	sent 5/22/15	1/12-5/2/15	ASL 2	533-127-3ZBF	5/2	M Mair	6,666.72
2015-0277		Burlington High School Burlington	R Mike Raether	Mary Blue	sent 5/22/15	1/12-5/2/15	Chinese 2	802-115-3ZBA	5/2	X Hill	9,946.08
2015-0278		Central High School Salem	K Gail Netzer-Jensen	Mary Blue	sent 5/22/15	1/12-5/2/15	Chinese 2	802-115-3ZBB	5/2	X Hill	9,946.08
2015-0279		Eikhorn High School Eikhorn	W Chris Trottier	Mary Blue	sent 5/22/15	1/12-5/2/15	Chinese 2	802-115-3ZBC	5/2	X Hill	9,946.08
2015-0280		Evansville High School Evansville	Scott Everson	Mary Blue	sent 5/22/15	1/12-5/2/15	ASL 2	533-127-3ZBG	5/2	M Mair	6,666.72
2015-0281		Union Grove High School Union Grove	R Alan Mollerskov	Mary Blue	sent 5/22/15	1/12-5/2/15	ASL 2	533-127-3ZBH	5/2	M Mair	6,666.72
2015-0282		Burlington High School Burlington	R Mike Raether	Mary Blue	sent 5/26/15	1/12-5/2/15	ASL 2	533-127-3ZBI	5/2	M Mair	6,666.72
2015-0283		Central High School Salem	K Gail Netzer-Jensen	Mary Blue	sent 5/26/15	1/12-5/2/15	ASL 2	533-127-3ZBJ	5/2	M Mair	6,666.72
2015-0284		Eikhorn High School Eikhorn	W Chris Trottier	Mary Blue	sent 5/26/15	1/12-5/2/15	ASL 2	533-127-3ZBK	5/2	M Mair	6,666.72
2015-0285		Williams Bay High School Williams Bay	William White	Mary Blue	sent 5/26/15	1/12-5/2/15	ASL 2	533-127-3ZBL	5/2	M Mair	6,666.72
2015-0286		Big Foot High School Walworth	Heidi McGraw	Mary Blue	sent 5/26/15	1/12-5/2/15	Microcomputer Prog	152-151-3KBA	5/2	A Pearson	10,072.08
2015-0287		Union Grove High School Union Grove	R Alan Mollerskov	Mary Blue	sent 5/26/15	1/12-5/2/15	Microcomputer Prog	152-151-3KBB	5/2	A Pearson	10,072.08
2015-0288		Burlington High School Burlington	R Mike Raether	Mary Blue	sent 5/26/15	1/12-5/2/15	Microcomputer Prog	152-151-3KBC	5/2	A Pearson	10,072.08
2015-0289		Central High School Salem	K Gail Netzer-Jensen	Mary Blue	sent 5/26/15	1/12-5/2/15	Microcomputer Prog	152-151-3KBD	5/2	A Pearson	10,072.08
2015-0290		Eikhorn High School Eikhorn	W Chris Trottier	Mary Blue	sent 5/26/15	1/12-5/2/15	ASL 4	533-129-3ZBA	5/2	M Mair	6,666.72
2015-0291		Burlington High School Burlington	R Mike Raether	Mary Blue	sent 5/26/15	1/12-5/2/15	ASL 4	533-129-3ZBB	5/2	M Mair	6,666.72
2015-0296		Insinkerator Racine	R Lynn Olesen	Richard Hanson	sent 5/27/15	Spring 2015	TA Training Center	900-003-3M1A	5/15	R Hanson Sanderson	41,850.00
2015-0297		NC3 Kenosha	Roger Tadjajewski	Debbie Davidson	sent 4/14/15	1/1-3/31/15	TA-Matt Janisin	900-019-3M1A 900-019-3M1B	3/31	M Janisin	10,175.00
2015-0298		KABA Kenosha	K Todd Battle	Richard Hanson	sent to billing 2/18/15	1/7/15- 2/1/15	Fund. of Supv. 1	196-461-3zbk	2/1/15	R. Hanson	1,860.00
2015-0299		KUSD/Indian Trails Academy Kenosha	K Marsha Nelson	Jane Finkenbine	sent 5/26/15	1/26-5/14/15	Intro Criminal Justice	504-900-3Z1A	5/14	F iovine	9,946.08

Contract Number	ATC	Company	Company Contact Person	Gateway Contact Person	Status	Dates	Course Name	Course Number	Crse End Date	Instructor	Est. Cost
2015-0300		Kenosha County Kenosha	Diane Leiting	Liz Oplatka	Sent to billing 2/5/15	12/15/14-12/16/14	Performance Communication	196-2ZBW, 2ZBX, 2ZBY, 2ZBZ	12/16/14	L. Oplatka	1,293.36
2015-0301 2015-0302		Brunk Industries WATG 171 Lake Geneva	Nancy Finlay	Lauri Howard	FA14 sent to billing 3/17/15	10/15/14-TBD	Supervision Exec. Leadership Adv. Excel	196-407-2zba, 2zbb 900-019-2m1U			23,064.00
2015-0303 2015-0304		Honeywell Cable Pleasant Prairie	Tom Anderson	Dan Neuman	Sent to billing 3/25/15	10/16/14-11/20/14	Intro to Hydral/Pnue	612-408-2zba, 2zbb, 2zb1	11/20/14	D. Neuman	10,075.00
2015-0305 2015-0306		Walworth County Jail Elkhorn	Stephen Sax	Lauri Howard	Sent to BO 4/29/15	1/12/15-5/1/15	Math 200 ABE Lab Supv.	854-750-3Z1J 890-721-3Z1J 900-020-3Z1J	5/1/15	S. Palmer	9,996.00
2015-0307		KUSD/Horizon Center Kenosha	Marsha Nelson	Jane Finkenbine	sent 5/26/15	1/26-5/21/15	Brake Systems Auto Service Fund for Transp	602-104-3H1C 602-107-3H1C 602-122-3H1C	5/21	W. Feil	14,370.22
2015-0310 2015-0311 2015-0312		Rust-Oleum WATG 142 Kenosha	Christopher Monroe	Lauri Howard	FA14 to inv 2/25/15 SP15 to BO 6-11-15	11/3/15-TBD	5S Intro to Hydraulics Mech Power Trans	623-483-2... 612-409-3... 462-491-2...		D. Neuman R. Lofy	65,607.00
2015-0313		Burlington High School Burlington	Mike Raether	Mary Blue	sent 5/26/15	1/12-5/2/15	Medical Terminology	501-101-3ebd		Formanek	10,072.08
2015-0314 2015-0315 2015-0316 2015-0317 2015-0318		KUSD/LakeView Forest County Potawatomi Milwaukee Kenosha Fire Department Badger High School Lake Geneva	Marsha Nelson Tony Balistreri Jim Poltrock Robert Kopydlowski	Jane Finkenbine Randy Reusser Gary Leyer Jane Finkenbine	sent 4/16/15 Sent to BO 3/12/15 sent 5/21/15 Sent to BO 6-17-15	1/26-3/26/16 2/23/15-2/28/15 4/15-4/29/15 1/12/15-6/3/15	Comp Program Eng Design for AMST BICSITE350 EMS CE 8hr EMS CE 4hr MSSC Marketing Principles Marketing/Sports Auto Service Fund	628-111-3L1B 628-122-3L1B 628-125-31B 150-417-a-3ZBF 150-417-b-3ZBG 531-487-3zba, b, c 531-488-3zba, b, c 625-125T-3zta 104-101T-3ztd, e 104-109t-3zta 104-105T-3ZTA 602-107T-3zta	2/28 4/29 6/4/15 6/3	J Nelson R. Reusser Oconnell Hulback various A Troxell	29,434.12 6,535.84 1,509.60 63,976.60 3,057.80
2015-0320		Burlington High School Burlington	Mike Raether	Jane Finkenbine	sent 6/3/15	1/12/15-6/3/15	Comp for Prof Principles IT Essentials Pers Fin Plan Entrepreneurship	103-143t-3zta 104-101t-3zta 107-193t-3zta 114-101t-3zta, b 148-105t-3zta	6/3	various	25,112.70
2015-0321		Delavan/Darien High School Delavan	Cora Rund	Jane Finkenbine	sent 6/3/15	1/12/15-6/3/15	Greenhouse Landscape Urban Farm	001-151t-3zta 001-140t-3zta 001-109t-3zta	6/3	various	13,175.10
2015-0322		Elkhorn High School Elkhorn	Chris Trotter	Jane Finkenbine	sent 6/3/15	1/12/15-6/3/15	Mkt Principles Keyboarding Entrepreneurship Med Term	104-101t-3zta, c 103-137t-3zta 145-105t-3zta 501-101t-3zta	6/3		20,773.50
2015-0323		KUSD/Indian Trails Academy Kenosha	Marsha Nelson	Jane Finkenbine	sent 6/3/15	1/12/15-6/3/15	Entrepreneurship Healthcare Term Healthcare Cust Svc Foundations ECE	145-119t-3zta, c 501-107t-3zta 501-101t-3ztd 501-104t-3zta 307-148t-3zta	6/3		22,132.40

Contract Number	ATC	Company	Company Contact Person	Gateway Contact Person	Status	Dates	Course Name	Course Number	Course End Date	Instructor	Est. Cost
2015-0324		KUSD/LakeView Pleasant Prairie	K Marsha Nelson	Jane Finkenbine	sent 6/3/15	1/12/15-6/3/15	Digital Electronics	605-130t-3zta	6/3		5,250.60
2015-0325		RUSD/Case High School Racine	R Bradley Haag	Jane Finkenbine	sent 4/29/15	1/12/15-6/3/15	Mkt Principles Keyboarding Intro to Business	104-101t-3ztf 106-137t-3zta,c,f 102-137t-3zta	6/3		20,878.50
2015-0326		RUSD/Horlick High School Racine	R Bradley Haag	Jane Finkenbine	sent 4/29/15	1/12/15-6/3/15	Intro to Business Business Law Keyboarding Entrepreneurship	102-137t-3zta,c,d,e 102-160t-3zta 106-137t-3ztd 145-119t-3ztd,e	6/3		29,061.90
2015-0327		RUSD/Park High School Racine	R Bradley Haag	Jane Finkenbine	sent 4/29/15	1/12/15-6/3/15	Mkt Principles Keyboarding	104-101t-3ztg 106-137t-3ztg,h	6/3		12,537.60
2015-0328		Union Grove High School Union Grove	R Alan Mollerskov	Jane Finkenbine	sent 4/29/15 Sent to BO 6-17-15	1/12/15-6/3/15	Comp for Prof Entrepreneurship Sanitation Hygiene	103-143t-3zta 145-119t-3zta 316-170t-3zta,b,c	6/3		12,522.60
2015-0329		Waterford High School Waterford	R Keith Brandstetter	Jane Finkenbine	sent 6/3/15	1/12/15-6/3/15	Med Term Intro to Business Digital Photo	501-101t-3zta 102-137t-3zta 204-107t-3zta	6/3		12,972.60
2015-0330		Westosha Central High School Salem	K Gail Netzer-Jensen	Jane Finkenbine	Sent to BO 6-17-15	1/12/15-6/3/15	Competition I ECE Foundation Hlth,Safety,Nutrition Med Term Mkt Principles Essentials	316-136t-3zta 307-148t-3ztd 307-167t-3zta 501-101t-3zta 104-101t-3zth 107-193t-3zta	6/3		22,822.40
2015-0331 September 17, 2015		Wilmet High School Wilmet	K Joel Adamczyk	Jane Finkenbine	sent 6/3/15	1/12/15-6/3/15	Comp for Profession Child Dev Auto Tech	103-143t-3zta 307-148t-3zta 602-125t-3zta	6/3		11,066.20
2015-0345		East Troy High School East Troy	W Jeff Crandall	Jane Finkenbine	sent 6/3/15	1/12/15-6/3/15	Comp for Profession	103-143t-3ztd	6/3		1,411.40
2015-0346		Waterford High School Waterford	R Keith Brandstetter	Jane Finkenbine	sent 5/27/15	3/5-5/21/15	Pre-technical writing	851-760-3Z1A	5/21	T Gadbury	3,240.00
2015-0347		WCEDA Elkhorn	W Derek D'Auria	Richard Hanson	Sent to billing 3/16/15	2/9/15-3/16/15	Fund. of Supv. 3	196-460-3ZBW	4/1/15	R. Hanson	1,860.00
2015-0349		KABA Kenosha	K Lisa Feltson	Richard Hanson	Sent to billing 3/24/15	2/18/15-3/28/15	Fund. Of Supv. 2	196-465-3zbb	3/28	R. Hanson	1,860.00
2015-0350		Warren Ind. Racine	R Michael Kirchner	Lauri Howard	Sent to billing 4/6/15	2/16/15-5/8/15	Lean Operations	623-812-3ZBR	5/8/15	R. Lofy	10,829.00
2015-0352		Insinkerator Racine	R Jessica Tiefenthaler	Richard Hanson	sent 5/27/15	Sp 15	Crises and books	103-102-3zba,b			0.00
2015-0353		First Call Heating & Cooling Racine	R Julie Venn	Kim Sanderson	Sent to billing 4/7/15	2/13/15-5/8/15	Excel Beginning	103-432D-3ZBF	5/8/15	K. Sanderson	1,593.13
2015-0356		SCJ Racine	R Ambra Caruthers	Lauri Howard	Sent to billing 2/25/15	1/29/2015	Intro to Hand Tools	462-489-3ZBJ	1/29/16	D. Neuman	620.00
2015-0357		KABA Kenosha	K Lisa Feltson	Richard Hanson	Sent to billing 4/9/15	4/1/15-4/29/15	Fund. Supv 3	196-460-3ZBK	4/29/15	R. Hanson	1,860.00
2015-0358		Arvato Digital Services Pleasant Prairie	K Heidi George	Kim Sanderson	Sent to billing 4/6/15	2/24/15-3/25/15	Excel Beginning Excel Intermed. Excel Adv.	103-417C-3ZBS 103-432C-3ZBS 103-466-3ZBS,T	3/25/15	K. Sanderson	7,038.00

Contract Number	ATC	Company	Company Contact Person	Gateway Contact Person	Status	Dates	Course Name	Course Number	Crse End Date	Instructor	Est. Cost
2015-0360 2015-0361		Miniature Precision Components WATG 194 Walworth	Dean Mieske	Lauri Howard	SP15 Sent to BO 6-5-15	3/19/15- 8/31/15	Cont. Improvement Supervision Leadership Dev.	623-194-3ZBM		R. Hanson	16,479.00
2015-0364		Gateway Technical College Facilities - Racine	John Thielen	Lynn Hinke	Sent to billing 2/29/15	2/16/2015	Forklift Recertification	462-401B-3RB2	2/16/15	V. Hinke	94.00
2015-0365		Gateway Foundation Inc. Kenosha	Jennifer Charpentier	Randy Reusser	Sent to BO 7-17-15	3/9-5/29/15	Telecom Safety BICSI IN101 Installer Telecom Firestopping Cert Customer Service Speaking Principles Mathematics I Telecommunications I OSHA 10 Lift Training MS Word I MS Excel I	605-166-3ba 150-411-3ba 605-197-3ba 195-155-3ba 801-302-3bb 804-370-3bb 605-134-3ba 449- 401b-3ba 605- 452-3ba 103- 476g-3ba 103- 417c-3ba		Reusser D Neuman R Lofy T Quinn S Yousuf Sandersn	19,315.86
2015-0366		Kenosha County Job Center	Doug Bartz	Randy Reusser	Sent to BO 7-17-15	3/9-5/29/15	Telecom Safety BICSI IN101 Installer Telecom Firestopping Cert Customer Service Speaking Principles Mathematics I Telecommunications I OSHA 10 Lift Training MS Word I MS Excel I	605-166-3bkb 150-411-3bkb 605-197-3bkb 195-155-3bkb 801-302-3bkb 804-370-3bkb 605-134-3bkb 449- 401b-3bkb 605- 452-3bkb 103- 476g-3bkb 103- 417c-3bkb		Reusser D Neuman R Lofy T Quinn S Yousuf Sandersn	12,877.24
September 17, 2015 93											
2015-0367 2016-0015		Racine Correctional Inst. Sturtevant Blueprint for Prosperity Grant	Paula Crandall	Debbie Davidson	SP15 CFS to S. Slater 6-5-15	2/23/15- 6/4/15	Fund. Of Safety & Print Reading Fund. Machine App. CNC Mach. Tech	444-337-3ZBX 444-338-3ZBX 444-331-1ZBX	6/4/15	K. Fulsom	0.00
2015-0368		SC Johnson Wax Racine	Ambra Caruthers	Dan Neuman	Sent to billing 3-24-15	3/4/2015	Intro. To Hand Tools	462-489-3ZBW	3/4/15	D. Neuman	620.00
2015-0369		Ocean Spray Kenosha	Mona Moncher	Dan Neuman	Sent to billing 3/12/15	10/21/14- 10/28/14	Technical Assistance - Assessments	900-019-2M1N	10/28/14	D. Neuman	1,240.00
2015-0370		Ocean Spray Kenosha	Mona Moncher	Dan Neuman	Sent to billing 3/12/15	11/11/2014	Technical Assistance - Assessments	900-019-2M1R	11/14/15	D. Neuman	930.00
2015-0371		Ocean Spray Kenosha	Mona Moncher	Dan Neuman	Sent to billing 3/12/15	12/9/14- 12/16/14	Technical Assistance - Assessments	900-019-2M1T	10/28/14	D. Neuman	2,480.00
2015-0372		Insinkerator Racine	Jessica Tiefenthaler	Richard Hanson	billed 3/12/15	1/1-3/6/15	Technical Assistance Lathe Safety and Refresher	900-019-3M1T		D Neuman	8,379.00
2015-0373		NC3 Kenosha	Roger Tadjewski	Matt Janisin	billed 3/12/15	1/15-1/19/15	TA-training at West-Mec	900-003-3M1Y	6-Mar 12-Mar	L Hobbs	2,250.00

Contract Number	ATC	Company	Company Person	Gateway Contact Person	Status	Dates	Course Name	Course Number	Crse End Date	Instructor	Est. Cost
2015-0375		Brunk Industries	Mike Black	Lauri Howard	Sent to BO 6/4/15	2/6/15-6/30/15	DISC TA- DISC Debrief TA-Coaching	196-828-3ZBN 900-019-3M1L 900-019-3m1n	6/30/15	L. Oplatka	54,554.00
2015-0376		Lake Geneva									
2015-0377	I	Rescare Kenosha	Steve Reinhold	Robin Hoke	Sent to billing 3-24-15	3/9/15-3/10/15	Forklift Training	462-401d-3CDM	10-Mar	V. Hinke	600.00
2015-0379		Kenall Manufacturing	Waylon Gross	Debbie Davidson	Sent to BO 6/4/15	3/10/15-5/31/15	Intro. to Assembly	605-456-3zba,3zbb,3zbc	5/31/15	J. Sammons	18,538.00
2015-0380		Kenosha									
2015-0381		Honeywell Pleasant Prairie	Tom Anderson	Dan Neuman	Sent to billing 4-8-15	1/8/15-2/5/15	Pumps	462-475-3zba,3zbb,3zb1	2/5/15	D. Neuman	6,510.00
2015-0382		Moriane Park Tech College Fond Du Lac	Kathy Schlieve	Dan Neuman	Sent to BO 6-5-15	1/16/15-3/6/15	Technical Assistance	900-019-3m1Z	4/6/15	D. Neuman	13,261.00
2015-0384		NC3	Roger Tadjewski	Matt Janisin	sent 7/2/15	3/31-6/30/15	TA Matt Janisin	900-019-3M1U, V, W	6/30	M Janisin	2,425.00
2015-0385		EMCO	Dale Tebbe	Lauri Howard	Sent to BO 5-28-15	5/4/15-7/18/15	Supervision Skills	196-889-3ZBE 196-889-3ZBF	7/18/15	Malcolm Frasier	12,780.00
2016-0021		Pleasant Prairie									
2015-0386		Gateway Foundation Inc. Kenosha	Jennifer Charpentier	Robin Hoke	sent 6/3/15	4/13-4/29/15	Cert Logistics Assist Cert Logistics Tech Forklift Training	625-407-3iba 625-408-3iba 443-412-3iba 443-412-3bbb		N Jonse S Chelsea V Hinke	7,260.00
2015-0387		KUSD/LakeView Pleasant Prairie	Marsha Nelson		sent 6/1/15	3/30-6/11/15	Mech Skills CAM Prog	628-109-3L1B 628-110-3L1B	6/11	J Nelson	25,448.16
2015-0388		LMI Packaging Pleasant Prairie	Hank Weil	John Dahms	Sent to BO 5-8-15	12/8/2014	Basic Fire Ext.	503-447-2ZBP, 2ZBQ	12-8-14	B. Pagliaroni	620.00
2015-0389		Lavelle	Deborah Scheffler	Lauri Howard	SP15 to BO 6-1-15	3/27/15-8/31/15	Excel PLC	103-808-3ZBE 103-804a-3ZBL 620-401-3ZBA,B		K. Sanderson D. Neuman	9,983.00
2015-0390		WATG 170 Burlington									
2015-0391		BRP	Tara Coppage	Lauri Howard	Sent to BO 6-23-15	2/17/15-8/31/15	Leadership	196-490B-3ZBW, 3ZBX, 3ZBY, 3ZBZ	8-31-15	L. Oplatka	31,088.00
2016-0025		WATG 198 Sturtevant									
2015-0392		Johnson Wax Racine	Ambra Caruthers	Kim Sanderson	sent 5/27/15	4/15/15-4/22/15	Project Beginning	103-404B-3IBA	4-22-15	K Sanderson	1,600.00
2015-0393		Gateway Foundation Inc. Kenosha	Jennifer Charpentier	Rick Lofy	sent 9/10	4/27/15-7/31/15	CNC Intro CNC Mach Op CNC Offsets Gauging Blueprint Rgd LEAN/Six Sigma Mfg Shop Safety Speaking Principles Applied Math	420-342-3ibc 420-343-1ibc 420-344-3ibc 420-345-3ibc 421-376-3ibc 623-146-3ibc 625-125-3ibc 801-302-3ibc 804-370-3ibc			19,005.93
2016-0031											
2015-0394		Kenosha County Job Center	Doug Bartz	Rick Lofy	sent 9/10	4/27/15-7/31/15	CNC Intro CNC Mach Op CNC Offsets Gauging Blueprint Rgd LEAN/Six Sigma Mfg Shop Safety Speaking Principles Applied Math	420-342-3ibc 420-343-1ibc 420-344-3ibc 420-345-3ibc 421-376-3ibc 623-146-3ibc 625-125-3ibc 801-302-3ibc 804-370-3ibc			15,475.86
2016-0032											

Contract Number	ATC	Company	Company Person	Gateway Contact Person	Status	Dates	Course Name	Course Number	Crse End Date	Instructor	Est. Cost
2015-0396		Brunk Cancelled; part of WATG			Canc			900-019-3M1T	2/3/2015	L. Oplatka	
2015-0397	I	RCEDC Sturtevant	Jenny Trick	Liz Oplatka	I resumes 8-1-15	4/19/15-8/3/15	Leadership Dev Perf. Management Coaching TA: Perf. Appraisal	196-464-3ZBR 196-490C-3ZBR 900-019-3M1R 900-019-3M1Q	6/29/2015	L. Oplatka	4,800.00
2015-0399	K	Kenosha County Public Works Kenosha Cancelled	Robert Riedel	Liz Oplatka	Canc.	5/4/15-7/6/15	Technical Assistance: Performance Appr.	900-019-3M1H	7/6/2015	L. Oplatka	0.00
2015-0400	I	Rescare Kenosha	Steve Reinhold	Beth Tilley	sent to BO 5-8-15	5/4/15-5/5/15	Forklift Training	462-401D-3CDY		L. Hinke	840.00
2015-0401	K	Foundation/SCJ Grant Kenosha	Robin Hoke	Beth Tilley	Sent to BO 5-7-15	1/12/15-3/20/15	Technical Assistance - CDL Training	900-003-3M1H		Eagle	15,750.00
2015-0402	K	Foundation/SCJ Grant Kenosha	Robin Hoke	Beth Tilley	Sent to BO 5-7-15	3/23/15-5/29/15	Technical Assistance - CDL Training	900-003-3M1K		Eagle	22,050.00
2015-0404	R	BRP Sturtevant	Stephen Crooks	Lauri Howard	sent to BO 5/21/15	3/18/15-5/13/15	Technical Assistance - Robotics	900-019-2M1O		JD Jones	4,650.00
2015-0405	K	Ocean Spray Kenosha	Mona Moncher	Dan Nueman	sent to BO 6/3/15	2/15/15-4/14/15	Technical Assitance - Assessments	900-019-3M1PY		D. Neuman	3,720.00
2015-0409	I	Badger Meter Racine	Nick Scherretter	Robin Hoke	sent to BO 7-15-15	6/15/2015	Technical Assistance - Welding Testing	900-019-1M1B		M. Uitech A. Schrieber	1,695.00
2016-0015		Educator's Credit Union	Tobi Weingart	Kate Walker	sent 9/10	6/17-8/31/15	TA Crista Kruse	900-019-1M1A	8/31	K Cruse	155.00
2016-0025	R	RUSD Racine	Bradley Haag	Julie Capelli	I	6/15-7/30/15	Nursing Assistant	543-300-1rba&b	30-Jul	J Capelli	16,116.80
2016-0003	W	Badger High School Lake Geneva	Robert Kopydlowski	Jo Hart	I	6/15-7/16/15	Nursing Assistant	543-300-1zba	16-Jul	J. Hart	8,058.40
2016-0004	R	Wilmot High School Wilmot	Joel Adamczyk	Jo Hart	I	6/15-7/16/15	Nursing Assistant	543-300-1zbb	1-Jul	J.Hart	8,058.40
2016-0006	R	Johnson Wax Racine	Natalie Piskor	Kim Sanderson	I	6/16/15-6/22/15	Outlook Excel 1 Excel 2 PowerPoint	103-448H-1ZBA 103-491A-1ZBA 103-491B-1ZBA 103-420D-1ZBA	6/22/15	K. Sanderson	4,300.00
2016-0007		Burlington High School Burlington	Mike Raether	Jo Hart	I	9/8-12/1/15	Nursing Assistant	543-300-2bb1	12/1	J. Hart	4,391.70
2016-0008		Waterford High School	Keith Brandstetter	Jo Hart	I	9/8-12/1/15	Nursing Assistant	543-300-2bb2	12/1	J. Hart	4,391.70
2016-0009		Badger High School Lake Geneva	Robert Kopydlowski	Jo Hart	I	9/8-12/4/15	Nursing Assistant	543-300-2zba	12/1	J. Hart	4,391.70
2016-0010		Wilmot High School	Joel Adamczyk	Jo Hart	I	9/8-12/3/15	Nursing Assistant	543-300-2zbb	12/1	J. Hart	4,391.70
2016-0011		Elkhorn High School	Chris Trottier	Jo Hart	I	9/8-12/4/15	Nursing Assistant	543-300-2eba	12/1	J. Hart	4,391.70
2016-0012		Westosha High School Salem	Gail Netzer-Jensen	Jo Hart	I	9/8-12/3/15	Nursing Assistant	543-300-2eb1	12/1	J. Hart	4,391.70
2016-0013		Burlington High School Burlington	Mike Raether	Jo Hart	I	9/8-12/3/15	Nursing Assistant	543-300-2bba	12/1	J. Hart	4,391.70
2016-0014		Waterford High School	Keith Brandstetter	Jo Hart	I	9/8-12/3/15	Nursing Assistant	543-300-2bbb	12/1	J. Hart	4,391.70

Contract Number	ATC	Company	Company Contact Person	Gateway Contact Person	Status	Dates	Course Name	Course Number	Crse End Date	Instructor	Est. Cost
2016-0015				Jo Hart	I	9/8-12/3/15	Nursing Assistant	543-300-2zbb	12/1	J. Hart	4,391.70
2016-0016		KUSD/Trempier High School	Marsha Nelson	Jo Hart	I	9/8-12/3/15	Nursing Assistant	543-300-2z1a	12/1	J. Hart	7,465.89
2016-0017		KUSD/Indian Trail Academy	Marsha Nelson	Jo Hart	I	9/8-12/3/15	Nursing Assistant	543-300-2z1b	12/1	J. Hart	7,465.89
2016-0018		KUSD/Trempier High School	Marsha Nelson	Jo Hart	cancelled	9/8-12/3/15	Nursing Assistant	543-300-2z1a	12/1	J. Hart	0.00
2016-0019		KUSD/Indian Trail Academy	Marsha Nelson	Jo Hart	I	9/8-12/3/15	Nursing Assistant	543-300-2z1d	12/1	J. Hart	7,465.89
2016-0022		UNFI Sturtevant	Rachel Prest	Michelle Talhami	Sent to BO 5-28-15	5/26/15-6/11/15	Technical Assistance - CDL Training	900-003-1M1U	6-11-15	Eagle	4,000.00
2016-0023		St Joseph Nursing Home Kenosha	Phyllis Thomas	John Dahms	Sent to BO 6-3-15	5/20/15-5/21/15	Basic Ext. Training	503-447-1zba...1zbb		B. Pagliaroni	2,490.00
2016-0027		Arvato Digital Kenosha	Heidi George	Kim Sanderson	sent 9/10	5/27-6/30/15	Excel Intermediate Excel Advanced	113-432c-1zba 103-466-1zba.b		Sanderson	4,266.60
2016-0028		Arvato Digital Kenosha	Heidi George	Kim Sanderson	sent 9/10	5/27-6/30/15	TA set up computers	900-019-1M11		Sanderson	450.00
2016-0029		Honeywell Cable Products Pleasant Prairie	Jeannie Leafblad	Kim Sanderson	sent 9/10	5/27-7/16/15	Excel Intern Powerpoint Intern	103-495B-1ZBA 103-432C-1ZBB 103-463-1ZBA	7-16	K Sanderson	4,325.00
2016-0030		Honeywell Cable Products Pleasant Prairie	Jeannie Leafblad	Kim Sanderson	sent 9/10	5/27-7/16/15	TA	900-019-1M12	7-16	K Sanderson	450.00
2016-0033		Abbey Resort Fontana	Sandra Peklo	Lori Macari	Sent to BO 5-28-15	5/12/2015	Heartsaver AED	531-448-1ZBY	5/12/2015	T. Weidert	770.00
2016-0034		East Troy High School East Troy	Jeff Crandall	Jo Hart	I	9/8-12/3/15	Nursing Assistant	543-300-2EB2	12/3/2015	J Hart	4,406.70
2016-0035		Delavan/Darien High School	Cora Rund	Jo Hart	I	9/8-12/3/15	Nursing Assistant	543-300-2EB3	12/3/2015	J Hart	4,406.70
2016-0036		Racine County Cancelled			Pending	Cancelled	LSS White Belt	623-437a-1ZBX		KC Jackson	0.00
2016-0037		Kenosha Fire Department Kenosha	James Poltrock	Gary Leyer	sent 7/2/15	6/12/2015	EMS CE 8 hour	531-805-1BBA		G Leyer	1,006.40
2016-0038		Insinkerator Racine	Jessica Tiefenthaler	Kate Walker	I	2015 Fall	TA Training Center	900-003-2M1A 900-019-2M1A		Sanderson Hanson	34,815.00
2016-0047		Kenosha County Kenosha	Ray Arbet	Liz Oplarka	Sent to BO 6-17-15	6/4/15-7/30/15	Supervision	196-461A-1ZBK		L. Oplarka	1,039.10
2016-0048		Burlington High School Burlington	Mike Raether	Jane Finkenbine	sent 8/31	6/22-7/30/15	Pers Finan Planning	114-101T-1ZTA	30-Jul	J Gribble	8,918.40
2016-0049		SC Johnson TOPS Racine	Natalie Piskor	Robin Hoke	sent 8/31	6/15-8/4/15	Career Development	862-402-1ZBA	4-Aug	Sanderson	800.00
2016-0053		Rescare Workforce Services Kenosha	Sten Reinhold	Beth Tilley	sent to BO 7-8-15	6/29/15-6/30/15	Forklift Training	462-401d-1CDF	6/30	L. Hinke	720.00
2016-0054		Harger Lightning Graylake IL	Rita Lee	Kim Sanderson	sent to BO 7-29-15	6/5/15-7/9/15	Excel	103-417C-1ZBA 103-417C-1ZBB	9-Jul	K. Sanderson	3,004.75
2016-0055		Kenall Sturtevant	Waylon Gross	Randy Reusser	sent to BO 7-15-15	6/16/2015	Intro to Assembly	605-456-1ZBK		R. Reusser	4,960.00



Contract Number	ATC	Company	Company Contact Person	Gateway Contact Person	Status	Dates	Course Name	Course Number	Course End Date	Instructor	Est. Cost						
2016-0056		RecPlex Pleasant Prairie	Erin Winch	John Dahms	sent to BO 7-15-15	6/4/2015	Ext. Training	503-447-1ZBR,1ZBP	4-Jun	B. Pagliarioni	620.00						
2016-0058		Gateway Technical College Foundation Inc.	Jennifer Charpentier	Rick Lofy	I	7/13-1/22/16	CNC Intro CNC Mach Op CNC Offsets Gauging Blueprint Rdg LEAN/Six Sigma Mfg Shop Safety Speaking Principles Applied Math	420-342-1Iba	22-Jan		20,599.49						
2016-0059								420-343-2Iba		420-344-1Iba			420-345-2Iba		421-376-1Iba		623-146-1Iba
2016-0060		DWFS-Walworth County Job Center	Marci Hayden-Barr	Rick Lofy	I	7/13-1/22/16	CNC Intro CNC Mach Op CNC Offsets Gauging Blueprint Rdg LEAN/Six Sigma Mfg Shop Safety Speaking Principles Applied Math	420-342-1Iba	22-Jan		26,433.63						
2016-0061								420-343-2Iba		420-344-1Iba			420-345-2Iba		421-376-1Iba		623-146-1Iba
2016-0076		KUSD LakeView Technology Center			I	9/8-6/11/16		150-114-2L1A	11-Jun	Pam See							
								150-194-2L1A		S Yousuf							
								152-089-2L1A,B									
								150-124-2L1A									
								150-111-2L1A									
										TOTAL	3,072,382.79						

September 17, 2015  
97

## GATEWAY TECHNICAL COLLEGE DISTRICT BOARD

Roll Call \_\_\_\_\_  
Action   x    
Information \_\_\_\_\_  
Discussion \_\_\_\_\_

### ADVISORY COMMITTEE ACTIVITY REPORT

Summary of Item: Approval of:

- New Members as of September 1, 2015
- 2015-16 Meeting Schedule as of September 1, 2015

Staff Liaison: John Thibodeau

# GATEWAY TECHNICAL COLLEGE ADVISORY COMMITTEES -- NEW MEMBERS as of September 1, 2015

PROGRAM Name	Job Title	Employer	County Represented
<b>Automated Manufacturing Systems Technician &amp; Electromechanical Technology</b>			
Beilman	Mark	Director of Education and Precision Plus Inc.	Out of District
<b>Emergency Medical Technician, Advanced EMT, EMT Paramedic, Fire Medic, &amp; Paramedic Technician</b>			
Ewald	Rebecca	Administrator Village of Waterford	Racine
Schuenke	Justin	Fire Chief Darien Fire Department	Walworth
<b>IT - Junior SharePoint Developer, IT - Junior Web Developer, IT - Software Developer, &amp; IT - Web Developer</b>			
Revolinski	Wendy	Junior Developer ATC Transportation, LLC	Kenosha
<b>Professional Communications</b>			
Jacob	Julie	Senior Staff Writer American Medical Association	Racine
<b>Welding &amp; Welding/Maintenance &amp; Fabrication</b>			
Pflueger	Jeff	Account Manager Airgas	Kenosha

## ADVISORY COMMITTEE 2014-2015 MEETING SCHEDULE as of September 1, 2015

ADVISORY COMMITTEE	DEAN	FALL 2015	SPRING 2016
Accounting	M. Babu	Tuesday, September 22, 2015 5:30 pm iMET Center – Room 104	
Administrative Professional Office Assistant	R. Koukari	Tuesday, September 22, 2015 5:30 pm iMET Center – Room 104	
Adult Basic Education	C. Jennings	Tuesday, October 20, 2015 2:00 pm Racine Campus Room R301 (SS Multipurpose)	
Adult High School	C. Jennings	Wednesday, September 16, 2015 & Wednesday, October 21, 2015 2:00 pm iMET Center - Room 401	
Aeronautics-Pilot Training	R. Koukari	Wednesday, October 14, 2015 11:00 am Horizon Center - Room 106	
Air Conditioning, Heating, & Refrigeration Technology Facilities Maintenance	R. Koukari	Monday, September 21, 2015 5:30 pm Kenosha Campus	
Architectural-Structural Engineering Technician Civil Engineering Technology - Fresh Water Resources	R. Koukari	Tuesday, October 13, 2015 5:30 pm iMET Center - Room 401	
Civil Engineering Technology – Highway Technology Geospatial Surveying Technician	R. Koukari	Wednesday, October 7, 2015 8:00 am Elkhorn Campus	
Automated Manufacturing Systems Technology Electromechanical Technology	R. Koukari	Tuesday, October 6, 2015 5:30 pm Horizon Center - Room 106	
Automotive Maintenance Technician Automotive Technology	T. Simmons	Wednesday, October 14, 2015 5:00 pm Racine Campus Room R102 (Superior Room)	
Barber Technologist Cosmetology	M. Babu	Tuesday, September 22, 2015 5:30 pm iMET Center – Room 104	
Business Management Small Business Entrepreneurship Supervisory Management	R. Koukari	Thursday, September 21, 2015	
CNC Production Technician			

ADVISORY COMMITTEE	DEAN	FALL 2015	SPRING 2016
Industrial Mechanical Technician Tool and Die Technician		5:30 pm Burlington High School	
Criminal Justice - Law Enforcement Criminal Justice – Law Enforcement Academy	T. Simmons	Thursday, October 8, 2015 11:00 a.m. Burlington Center - Room 100	
Culinary Arts	T. Simmons	Wednesday, October 7, 2015 3:00 pm Racine Campus - Breakwater Dining	
Dental Assistant			
Diesel Equipment Mechanic Diesel Equipment Technology	R. Koukari	Wednesday, October 7, 2015 5:30 pm Horizon Center - Room 106	
Early Childhood Education Instructional Assistant	T. Simmons	Wednesday, October 7, 2015 5:00 p.m. Racine Campus Room R301(SS Multipurpose)	
Electrical Engineering Technology Electronics	R. Koukari	Tuesday, October 13, 2015 5:30 pm iMET Center - Room 401	
Advanced EMT Emergency Medical Technician EMT Paramedic Paramedic Technician	T. Simmons	Wednesday, October 14, 2015 3:00 p.m. Burlington Center H101	
Fire Medic Firefighter Technician	T. Simmons	Wednesday, October 14, 2015 9:00 a.m. Burlington Center H101	
Graphic Communications	M. Babu	Wednesday, September 30, 2015 5:30 pm iMET Center – Room 104	
Health Information Technology	M. O'Donnell	Thursday, November 19, 2015 2:30 p.m. Racine Campus	
Health Unit Coordinator	M. O'Donnell	Thursday, November 12, 2015 3:30 p.m. iMET Center	
Horticulture	R. Koukari	Monday, September 28, 2015 6:00 pm Kenosha Campus Room H120	
Hotel/Hospitality Management	T. Simmons	Tuesday, October 6, 2015 3:00 pm Elkhorn Campus -Room E229	
Human Services Associate	T. Simmons	Thursday, October 8, 2015 5:00 pm Racine Campus Room R113 (Michigan Room)	
Information Technology - Computer Support Specialist Information Technology - Network Specialist	R. Koukari	Thursday, September 24, 2015 5:30 pm iMET Center - Room 401	
Information Technology - Junior SharePoint Developer Information Technology - Junior Web Developer	R. Koukari	Thursday, September 24, 2015 5:30 pm iMET Center - Room 401	

ADVISORY COMMITTEE	DEAN	FALL 2015	SPRING 2016
Information Technology - Software Developer Information Technology - Web Developer			
Interior Design	R. Koukari	Thursday, September 10, 2015 5:30 pm iMET Center - Room 401	
Marketing	M. Babu	Tuesday, September 22, 2015 5:30pm iMET Center – Room 104	
Mechanical Design Technology	R. Koukari	Thursday, October 8, 2015 4:30 pm iMET Center - Room 401	
Medical Assistant	M. O'Donnell	Wednesday, October 28, 2015 7:30 am Racine Campus Room R102 (Superior Room)	
Nursing Assistant	D. Skewes	Tuesday, October 27, 2015 3:00 pm, Burlington Center, Room 100	
Nursing Associate Degree	D. Skewes	Thursday October 8, 2015 2:00 pm Kenosha Campus - Room S100A	
Pharmacy Technician	M. O'Donnell		
Physical Therapist Assistant	M. O'Donnell		
Professional Communications	M. Babu	Wednesday, September 30, 2015 5:30 pm iMET Center – Room 104	
Surgical Technology	M. O'Donnell		
Veterinary Assistant Veterinary Technician			
Welding Welding/Maintenance & Fabrication	R. Koukari	Wednesday, September 30, 2015 5:30 pm iMET Center - Room 401	

# GATEWAY TECHNICAL COLLEGE DISTRICT BOARD

Roll Call \_\_\_\_\_  
Action \_\_\_\_\_X  
Information \_\_\_\_\_  
Discussion \_\_\_\_\_

## APPRENTICE PROGRAM REINSTATEMENT REQUEST 50-420-1 MOLD MAKER APPRENTICE

### Summary of Item:

Board approval is requested to submit the Apprentice Related Instruction Action Form for 50-420-1 Mold Maker Apprentice Program to the Wisconsin Technical College System for consideration. The program was previously offered at Gateway, and the request is to reinstate the programming.

**Attachments:** Summary of Program Description

**Staff Liaison:** Debbie Davidson, BWS

## **Program Description – 50-420-1 Mold Maker Apprentice**

Mold Makers set up or set up and operate plastic molding machines, such as compression or injection molding machines, to mold, form, or cast thermoplastic materials to specified shape. In this apprenticeship, learn basic theory in machining, blueprint reading and metallurgy, in addition to knowledge in stamping, mold making blanking, jigs and fixtures, plastics and die casting. Computer-assisted CNC machining and die and mold design are also covered



# GATEWAY TECHNICAL COLLEGE DISTRICT BOARD

Roll Call \_\_\_\_\_  
Action \_\_\_\_\_X  
Information \_\_\_\_\_  
Discussion \_\_\_\_\_

## NEW APPRENTICE PROGRAM REQUEST 50-420-2 – MACHINIST APPRENTICE

### Summary of Item:

Board approval is requested to submit the Apprentice Related Instruction Action Form for 50-420-2 Machinist Apprentice to the Wisconsin Technical College System for consideration. The program was previously offered at Gateway Technical College, and the request is to reinstate the programming.

**Attachments:** Summary of Program Description

**Staff Liaison:** Debbie Davidson, BWS

## **Program Description – 50-420-2 Machinist Apprentice**

Entry level industrial manufacturing technicians operate industrial production related equipment, work with manufacturing related tools, and perform work processes related to a wide variety of manufacturing settings. Industrial manufacturing technician apprentices will learn to set up, operate, monitor, and control production equipment. They will also help improve manufacturing processes and schedules to meet customer requirements. This apprenticeship training program combines on-the-job learning with related instruction in a classroom to prepare apprentices for journey level work after they complete the program.

# GATEWAY TECHNICAL COLLEGE DISTRICT BOARD

Roll Call \_\_\_\_\_  
Action \_\_\_\_\_X  
Information \_\_\_\_\_  
Discussion \_\_\_\_\_

## NEW APPRENTICE PROGRAM REQUEST 50-420-9 – INDUSTRIAL MANUFACTURING TECHNICIAN

### Summary of Item:

Board approval is requested to submit the Apprentice Related Instruction Action Form for 50-420-9 Industrial Manufacturing Technician to the Wisconsin Technical College System for consideration. The program is currently offered at several other Wisconsin Technical Colleges, and the request is to utilize their existing model and implement it within our apprenticeship area.

**Attachments:** Summary of Program Description

**Staff Liaison:** Debbie Davidson, BWS

## **Program Description – 50-420-9 Industrial Manufacturing Technician**

Entry level Industrial Manufacturing Technicians operate industrial production related equipment, work with manufacturing related tools, and perform work processes related to a wide variety of manufacturing settings. Industrial manufacturing technician apprentices will learn to set up, operate, monitor, and control production equipment. They will also help improve manufacturing processes and schedules to meet customer requirements. This apprenticeship training program combines on-the-job learning with related instruction in a classroom to prepare apprentices for journey level work after they complete the program.

# GATEWAY TECHNICAL COLLEGE DISTRICT BOARD

Roll Call \_\_\_\_\_  
Action \_\_\_\_\_X  
Information \_\_\_\_\_  
Discussion \_\_\_\_\_

## NEW APPRENTICE PROGRAM REQUEST 50-464-1 – MAINTENANCE TECHNICIAN APPRENTICE

### Summary of Item:

Board approval is requested to submit the Apprentice Related Instruction Action Form for 50-464-1 Maintenance Technician Apprentice to the Wisconsin Technical College System for consideration. The program is currently offered at Fox Valley Technical College, and the request is to utilize their existing model and implement it within our apprenticeship area.

**Attachments:** Summary of Program Description

**Staff Liaison:** Debbie Davidson, BWS

## **Program Description – 50-464-1 Maintenance Technician Apprentice**

Works on mechanical and electrical equipment and machines in industrial settings. Mechanical includes installing equipment, repairing and replacing units, maintaining equipment and using machines. Electrical includes working with electrical drawings, troubleshooting electrical motors, AC and DC drives and PLC's (programmable logic controllers) along with solid state devices.

# GATEWAY TECHNICAL COLLEGE DISTRICT BOARD

Roll Call \_\_\_\_\_  
Action \_\_\_\_\_X  
Information \_\_\_\_\_  
Discussion \_\_\_\_\_

## INDICATION OF BOARD SUPPORT NEEDED AACC Pathways Project

### Summary of Item:

Indication of Board support is needed to file the readiness assessment and application for the American Association of Community Colleges (AACC) Pathways Project.

**Attachments:** AACC Pathways Project Description

**Staff Liaison:** Jaime Spaciol, Career Pathways Manager



## PROJECT DESCRIPTION

### Building Capacity For Reform at Scale In The Community College Field

A decade of intensive focus on improving student success in community colleges has produced notable effects: a dramatic increase in awareness of the challenges and in commitment to college completion as a critical goal; a sea change in the use of data to assess and monitor student success and institutional performance; a growing body of evidence regarding effective educational practice in community colleges; and increasing numbers of institutions that are putting that knowledge into practice and demonstrating encouraging results. These promising developments can be attributed to the unprecedented efforts of a collection of philanthropies, national organizations, state systems, and institutions that have worked both collectively and individually to investigate practice, implement change, and produce results.

Now, there is a striking convergence of research and lessons of experience, as these people and their organizations have come to the shared understanding that progress, while evident in some places, is too slow; that the favored solutions of the past decade, while often necessary components of change, do not adequately address the magnitude of the challenges community colleges and their students face; and that typically, the changes thus far achieved have not been fundamental enough—and certainly not scaled enough—to achieve the improvements in completion of college credentials with strong labor market value, especially among low-income students and students of color, that are necessary to *reclaim the American Dream*.

Recognizing these realities—and affirming the critical role of America’s community colleges, the American Association of Community Colleges (AACC) has undertaken, with generous funding from the Bill & Melinda Gates Foundation, a national project focused on building capacity for community colleges to design and implement *structured academic and career pathways* for all of their students.

Building on emerging research and experience in the field, the project reflects AACC’s commitment to follow through strategically on recommendations set forth in the 2012 report of the 21st-Century Commission on the Future of Community Colleges, *Reclaiming the American Dream*, and the 2014 implementation guide, *Empowering Community Colleges to Build the Nation’s Future*.

### National Partners

Key national partners in the project are **Achieving the Dream, Inc.**, **Aspen Institute**, the **Center for Community College Student Engagement**, the **Community College Research Center**, **Jobs for the Future**, the **National Center for Inquiry and Improvement**, and **Public Agenda**.

### The Pathways Institute Series

The project will build a model series of six institutes, each 2.5 days in length and each engaging five-person teams of varying composition from a selected group of 30 colleges. All will support committed community colleges in work to design and implement clear, structured student pathways to high-quality credentials that are aligned both to university transfer and to jobs with value in the labor



market. Designated college teams will attend the six institutes in 2016-2018, and each event will focus on a critical aspect of institutional change and pathway design/implementation; each will require advance work by the colleges, and each will result in products developed by the participating college teams, including action plans and assessment of needs for technical assistance. The institute format will combine discussions with experts, technical assistance, and facilitated discussion/planning sessions for college teams.

### College Participation

The institute series will involve, through a competitive application process, AACC member colleges that demonstrate serious commitment to transformational work at scale to improve college completion and equity in student outcomes. In the selection process, priority will be given to colleges located in focus states for the Bill & Melinda Gates Foundation: CA, FL, GA, KY, NC, NY, OH, TN, TX, and WA. Ideally, a number of colleges from other states also will be selected to participate. Colleges will receive no direct funding; but most on-site costs of institute participation (i.e., materials, coaching, hotel rooms, refreshment breaks, and most meals) will be covered by the project budget. The college will be responsible for travel expenses for a 5-person team, including airfare, ground transportation, parking, and non-institute meals.

### Knowledge Development

In addition to providing direct support to college teams, the project aims to build knowledge in the field that will lead to broader and better adoption of the pathways reforms. Accordingly, participating colleges will (1) collect, monitor and report data on selected metrics depicting student connection, progress and completion; and (2) participate in evaluation of the institute series. In addition, the project will support student focus groups at several of the colleges, providing authentic voices and video documentation that enrich understanding of quantitative data. Systematic interviews conducted with individuals at project colleges will contribute to the existing knowledge base about institutional change, particularly through the process of implementing guided pathways at scale. Finally, the project partners will develop open-source resource materials for broad use by community colleges.

### Achieving Scale

The project focus is design and testing of an approach that can be replicated with additional groups of institutions. A further outcome will be expansion of the available pool of experts qualified to provide technical assistance to colleges as they undertake pathway design and implementation. The institute series will be implemented during 2016-2018 with 30 colleges; then, with the benefit of thorough evaluation and related improvements, the institute models and related tools and resources will be made available to Achieving the Dream, state-based student success centers, and perhaps other organizations that can replicate the series, supporting pathway design and implementation at much greater scale across the community college field.

#### PATHWAYS PARTNERS



# GATEWAY TECHNICAL COLLEGE DISTRICT BOARD

Roll Call \_\_\_\_\_  
Action   X    
Information \_\_\_\_\_  
Discussion \_\_\_\_\_

## TECHNICAL BUILDING ELECTRICAL SERVICE UPGRADE RACINE CAMPUS BID NO. 1484

Summary of Item: The College solicited for and received three (3) contractor bids for the Technical Building Electrical Service Upgrade project on the Racine Campus. The Bid consisted of three (3) bid packages and four (4) alternate bids.

Following a review of all the bids, we are recommending the College enter into a contract with Absolute Construction Enterprises, Inc. to complete this scope of work.

The contract totals and fee summary is as follows:

Prime Contract (Contract Value for Absolute):	\$ 418,500.00
Contingency (Held by Gateway):	40,000.00
<i>ODP Switchgear</i> (Held by Gateway):	100,000.00
A&E Fees (PIDA fees agreed upon):	37,382.00
Reimbursable Fees	<u>1,000.00</u>
<b>Total Project Cost:</b>	<b>\$ 596,882.00</b>

Attachments: Letter of Recommendation for Award of Bids & Tabulation of Bids

Ends Statements  
and/or Executive Section 3 – Executive Limitations,  
Limitations: Policy 3.5, Financial Condition

Staff Liaison: William R. Whyte



September 09, 2015

Mr. William Whyte  
Gateway Technical College  
3520 30<sup>th</sup> Avenue  
Kenosha, Wisconsin 53140

Re: Racine Campus:  
Tech Building Electrical Service Upgrade  
Official Notice No. 1484

**Dear Mr. Whyte:**

On Friday, September 04, 2015 we received contractor bids for the Tech Building Electrical Service Upgrade project on the Racine Campus. Judy Braun and John Thielen were in attendance on behalf of the Gateway Technical College and I was in attendance on behalf of Partners In Design Architects for the receipt of bids.

The Boiler Replacement Project consisted of three bid packages and four alternate bids:

**Bid Package 'A':** Site modifications necessary to install a new electrical service and C/T Cabinet near the Racine Building.

**Bid Package 'B':** Site modifications necessary to create a new electrical pit area and install a new electrical service and C/T cabinet closer to the Tech Building.

**Bid Package 'C':** To complete all of the interior renovation/modifications as designed.

**Alternate Bid No. 1:** Value to be added to bid package A to regard the site to allow for the new electrical service and C/T cabinet to be set at a lower elevation.

**Alternate Bid No. 2:** Remove and replace damaged underground exhaust duct.

**Alternate Bid No. 3:** Replace Simplex junction box.

**Alternate Bid No. 4:** Remove the remaining exhaust duct in the maintenance shop area.

Having reviewed the bid packages with Mr. Thielen, and yourself, Gateway has decided to accept bid packages A and C, and Alternate Bids 1, 2, 3 and 4 for the labor and material to complete the accepted scope of work. We are recommending that the College enter into a contract with Absolute Construction Enterprises, Inc. to complete this scope of work.

Based on our bid evaluation, we further recommend that the contract value for Absolute Construction Enterprises, Inc. to be \$418,500.00. Gateway should also budget approximately \$38,382.00 for architectural and engineering fees, and reimbursable costs related to the competitive bid process.

Additional we have requested that the Gateway Technical College hold \$100,000.00 to purchase and supply the switchgear. We further recommend that a contingency of roughly \$40,000.00, be held by the college in a contingency fund outside of the construction contract for any unforeseen condition that can arise due to the renovation nature of the project and to cover the cost of any implemented unit prices.

Prime Contract:	\$ 418,500.00	<i>(Contract Value for Absolute)</i>
Contingency:	\$ 40,000.00	<i>(Held by GTC)</i>
ODP Switchgear:	\$ 100,000.00	<i>(Held by GTC)</i>
A&E Fees	\$ 37,382.00	<i>(PIDA fees agreed upon)</i>
Reimbursable fees	\$ 1,000.00	

**Total Project Cost: \$ 596,882.00**

Should you have any questions regarding our recommendation, please do not hesitate to give me a call.

Sincerely,



Jeffrey E. Bridleman

Project No.: 191.13.087  
Bid Date: Friday September 4, 2015  
Bid Time: 1:30 p.m.



General Contractor	Bid Bond	Bid Package A	Bid Package B	Bid Package C	Alternate Bid No. 1	Alternate Bid No. 2	Alternate Bid No. 3	Alternate Bid No. 4	Addendum 1, 2	Comments
Absolute Construction	X	\$155,000.00	\$259,000.00	\$191,000.00	\$7,700.00	\$11,800.00	\$4,500.00	\$3,500.00	YES	
Camoso construction	X	\$165,000.00	\$280,000.00	\$217,000.00	\$13,700.00	\$26,700.00	\$4,200.00	\$5,500.00	YES	
Riley Construction	X	\$149,489.00	\$238,400.00	\$208,901.00	\$6,966.00	\$34,362.00	\$4,146.00	\$5,073.00	YES	

# GATEWAY TECHNICAL COLLEGE DISTRICT BOARD

Roll Call \_\_\_\_\_  
Action   X    
Information \_\_\_\_\_  
Discussion \_\_\_\_\_

## BOILER REPLACEMENT PROJECT KENOSHA CAMPUS BID NO. 1487

Summary of Item: The College solicited for and received three (3) contractor bids for the Boiler Replacement project on the Kenosha Campus. The Bid consisted of two (2) bid packages and three (3) alternate bids.

Following a review of all the bids, we are recommending the College enter into a contract with Martin Peterson Company, Inc. (MPC) to complete this scope of work.

The contract totals and fee summary is as follows:

Prime Contract (Contract Value for MPC):	\$ 219,511.00
Contingency (Held by Gateway):	37,000.00
<i>Boiler ODP</i> (Equipment Purchased by Gateway):	143,715.00
A&E Fees (PIDA fees 9.0%):	38,519.00
Reimbursable Fees	<u>1,000.00</u>
<b>Total Project Cost:</b>	<b>\$ 439,739.00</b>

Attachments: Letter of Recommendation for Award of Bids & Tabulation of Bids

Ends Statements  
and/or Executive Section 3 – Executive Limitations,  
Limitations: Policy 3.5, Financial Condition

Staff Liaison: William R. Whyte



September 08, 2015

Mr. William Whyte  
Gateway Technical College  
3520 30<sup>th</sup> Avenue  
Kenosha, Wisconsin 53140

Re: Kenosha Campus:  
Boiler Replacement Project  
Official Notice No. 1487

**Dear Mr. Whyte:**

On Friday, September 04, 2015 we received contractor bids for the Boiler Replacement project on the Kenosha Campus. Judy Braun was in attendance on behalf of the Gateway Technical College and I was in attendance on behalf of Partners In Design Architects for the receipt of bids.

The Boiler Replacement Project consisted of two bid packages and three alternate bids:

**Bid Package '1':** Provide all labor and material necessary to extend existing piping, valve and cap for future boiler connections.

**Bid Package '2':** Provide all labor and material necessary to install three new high efficiency boilers.

**Alternate Bid No. 1:** Provide a number to be added to bid package number 2 to provide one additional boiler.

**Alternate Bid No. 2:** Provide a number to be deducted from bid package number 2 to provide an alternate boiler manufacturer that must meet or exceed the specified requirements.

**Alternate Bid No. 3:** Provide a number to be deducted from bid package number 2 if the owner were to direct purchase the three specified boilers.

Having vetted Alternate bid No. 3 with all of the bidders and having reviewed the bid packages with Mr. Paruszkiewicz, and yourself, Gateway has decided to accept bid packages 1 and 2 and alternate Bid no. 3 for the labor and material to complete the accepted scope of work. We are recommending that the College enter into a contract with Martin Petersen Company, Inc. to complete this scope of work.

Based on our bid evaluation, we further recommend that the contract value for Martin Petersen Company, Inc. to be \$219,511.00. Gateway should also budget approximately \$39,513.00 for architectural and engineering fees, and reimbursable costs related to the competitive bid process.

Additional we have requested that the Gateway Technical College hold \$143,715.00 to purchase and supply the three new boilers for the contractor to install. We further recommend that a contingency of roughly \$37,000.00, be held by the college in a contingency fund outside of the construction contract for any unforeseen condition that can arise due to the renovation nature of the project and to cover the cost of any implemented unit prices.

Prime Contract:	\$ 219,511.00	<i>(Contract Value for MPC)</i>
Contingency:	\$ 37,000.00	<i>(Held by GTC)</i>
Boiler ODP:	\$ 143,715.00	<i>(Equipment Purchased by GTC)</i>
A&E Fees	\$ 38,519.00	<i>(PIDA fees 9.0%)</i>
Reimbursable fees	\$ 1,000.00	

**Total Project Cost: \$ 439,739.00**

Should you have any questions regarding our recommendation, please do not hesitate to give me a call.

Sincerely,



Jeffrey E. Bridleman





General Contractor	Bid Bond	Bid Package 1	Bid Package 2	Alternate Bid No. 1	Alternate Bid No. 2	Alternate Bid No. 3	Clarification ODP	Addendum 1, 2	Comments
MAWI	x	\$3,525.00	\$385,440.00	\$75,687.00	none	-\$7,329.65	-\$151,044.46	Yes	
MPC	x	\$6,230.00	\$364,900.00	\$70,980.00	none	-\$143,715.00	-\$151,619.00	Yes	
Lee Heating and Cooling	x	\$8,000.00	\$387,788.00	\$72,800.00	none	-\$8,500.00	-\$177,315.00	Yes	

X. POLICY GOVERNANCE MONITORING REPORTS

A. End Statement Monitoring

1. End Statement #5 – **Gateway provides** a positive return on taxpayer and community investment by leveraging its core capabilities in a financially and socially responsible manner.

*FY14-15 Preliminary Finance Results (Unaudited) – B. Thomey*

# GATEWAY TECHNICAL COLLEGE DISTRICT BOARD

Roll Call \_\_\_\_\_  
Action   X    
Information \_\_\_\_\_  
Discussion \_\_\_\_\_

## MONITORING REPORT FY 2014-15 PRELIMINARY FINANCIAL RESULTS (UNAUDITED)

Summary of Item: The report will include FY 2014-15 Preliminary Financial Results (unaudited).

Attachment: FY 2014-15 Preliminary Financial Results (unaudited)

Ends Statements  
and/or Executive  
Limitations:

Executive Limitations:  
3.1 General Executive Constraint  
3.4 Budgeting/Forecasting  
3.5 Financial Condition  
Strategic Direction/Ends Statement #5

Staff Liaison: Bane Thomey

Top794.docx 09/11/15

# YEAR END FINANCIAL REVIEW

July 1, 2014 – June 30, 2015

FY 2014-15 Year End Financial Review – 09 17 15 Bd Mtg.docx BT

## General Fund

The preliminary General Fund results for fiscal year 2015 are as follows:

GENERAL FUND	Budget	Actual	Variance fav (unfav)
Revenue	\$ 78,974,500	\$ 77,271,307	\$ (1,703,193)
Expenses	79,445,000	75,675,600	3,769,400
Net Operating Rev (Exp)	<u>(470,500)</u>	<u>\$ 1,595,707</u>	<u>\$ 2,066,207</u>
Transfer Out	150,000	150,000	-
General Fund Surplus (Deficit)	\$ (620,500)	\$ 1,445,707	\$ 2,066,207

## Overall Results

Preliminary operating results show revenues exceeding expenses by \$1.6M, however due to a planned transfer out to the capital fund, the net effect to fund balance will be an increase of \$1.4M. The operational savings are mainly due to vacant position savings throughout the year, benefits budgeted at family for all vacancies; offset by an increase in adjunct expense and administration managing discretionary current expenses. Overall, salary savings are lower than fringe savings as additional adjuncts were used in place of full time personnel.

## Fund Balance/Reserves

Fund balance is a combination of previous fund balance, net revenues over expenses, adjustments for prepaid expenditures and transfers out to other funds. As a matter of sound financial practice, fund balance should only be used to support one time initiatives, as opposed to ongoing operational expenses. In any year, the amount by which net expenses exceed net revenues, there will be a direct reduction in fund balance. Prepaid expenses are those expenses paid in the current year for services expected in the following year. They are "shifted" to the appropriate year through the use of reserves. Prepaids include expenses for health & dental, maintenance agreements, IT contracts, Ellucian, purchasing consortium expenses, etc.

In FY15 and as part of the budget, the board approved a \$150,000 reclassification of fund balance to the capital projects fund for one time equipment needs to support the Mechatronics lab, Administration Center west furniture purchase and instructional program furniture needs. Management is recommending fund balance be monitored for policy adherence, possible use to offset a growing OPEB liability as well as hedge the potential for short term borrowing needs due to Wisconsin Act 145 which shifted a portion of funding for technical college districts from local property taxes to state sources.

### Change in Fund Balance - Designated for Operations:

<b>06/30/14 Balance</b>	<b>\$ 21,621,182</b>
Less: reclassification to 'Reserve for OPEB'	\$ (380,000)
Net Revenue over Expenditures FY15	1,595,707
Adjustment for decrease in Prepaid Expenditures	75,459
Less: Operating Transfer out to Capital Fund	<u>(150,000)</u>
Net Change to Designated for Operations	1,141,166

**06/30/15 Balance** **\$ 22,762,348**

Budgeted FY16 Expenses	\$ 77,858,865
General Fund Reserves as a % of Expenses	29.2%

# YEAR END FINANCIAL REVIEW

July 1, 2014 – June 30, 2015

FY 2014-15 Year End Financial Review – 09 17 15 Bd Mtg.docx BT

The General Fund reserve is expected to be \$22.8M as of June 30, 2015 or 29.2% of expenses budgeted for FY16. To align with the WTCS Financial Administrative Manual and comply with district policy, administration is recommending the fund balance will be allocated to various designations as follows:

		As a % of Expenses
<b>Designated for Operations</b>	<b>\$ 19,464,716</b>	<b>25.0%</b>
Designated for State Aids Fluctuations	588,300	
Designated for Subsequent Year	1,826,882	
Designated for Subsequent Years	882,450	
<b>Total Fund Balance 06/30/15</b>	<b>\$ 22,762,348</b>	

## Revenues

Overall, total revenues were slightly unfavorable to budget by 2.2% or \$1,703,193. The decrease is due largely in part to a reduction in program & material fees of \$1,959,705 or 9.9% driven by a decrease in enrollment. Contracts for service was under budget by \$452,939 or 22.6%; as well as Alternative High School Revenue of \$243,153 or 81.1%. Although considered a “wash” with expenses, Transcribed Credits exceeded the budget by \$444,511 or 74.1% demonstrating additional outreach into the K12 districts. Bookstore Royalties were moderately under budget by 9.2% or \$55,142. The above decreases were offset by an increase to state aid of 1.3% or \$487,858 and Other Revenues were favorable by \$80,680 or 27.3%.

## Expenses

Overall, total general fund expenses were under budget by \$3,769,400 or 4.7%. *Total salaries* were under budget \$953,759 or 2.0%. The variance is due largely in part to savings of 2.2% or \$419,184 in Instructor Salaries; 7.3% or \$289,342 in Clerical-Permanent; 37.9% or \$158,611 in Student Employees; 8.5% or \$155,847 in Professional Non Faculty expenses; and 71.8% or \$145,637 in Clerical-Casual. Adjunct Instruction was over budget by 21.7% or \$1,077,345; additionally, Technical-Permanent and Technical-casual were over budget by 1.6% or \$88,168; and 23.2% or \$70,231 respectively. As in past years, the increase in Adjunct salaries is offset by the decrease in hiring full time faculty to allow for flexibility and accommodate the changes in enrollment.

*Employee benefits* were under budget by \$1,714,578 or 9.0%. The variance is due largely in part to Health & Dental Insurance savings of \$692,622 or 6.9%; and Social Security and Retirement of 5.1% or \$334,938. These savings were driven by unfilled full-time positions which were budgeted at family coverage as well as WRS actual rates coming in lower than budgeted. Early retirement expense was under budget \$192,727 or 11.3% due mainly to actual rates coming in lower than expected.

*Other expenses* were under budget by \$1,101,062 or 7.9%. Included in the *other expenses* category are Supplies, which were under budget by \$598,499 or 29.2%. The savings in supplies was mainly attributed to management’s focus on controlling expenses responsibly in line with the decrease in enrollment. Rentals were also under budget by 35.4% or \$379,657. The rental savings was attributed to the decrease in cost of equipment rentals due to the continued green print initiative. Service Contracts were under budget by 11.5% or \$258,190; Professional Fees were under budget by 25.9% or \$202,537; Utilities came

# YEAR END FINANCIAL REVIEW

July 1, 2014 – June 30, 2015

FY 2014-15 Year End Financial Review – 09 17 15 Bd Mtg.docx BT

in favorable by \$161,813 or 10.2%. Insurance expense was under budget by \$113,838 or 17.5%. Computer software was under budget by \$111,954 or 22.5%. Offsetting the decreases were Academic Professional Contracts which were over budget by 166.6% or \$760,648 mainly due in part to the increase in Transcribed credit offerings (“wash” mentioned in revenues) as well as CDL testing and training expenses. Printing was over budget by 60.4% or \$164,580 as well as Repairs were unfavorable by \$157,029 or 23.7%.

## **Special Revenue Fund**

The Special Revenue Fund is used to account for all grant-related activities. The fund experienced a favorable financial result for FY 2015 with revenues exceeding expenses by \$505,311. A year-end budget revision will be necessary to reallocate the budget within functions, however, due to an operating transfer to the capital projects fund of \$580,000 the fund balance will decrease by (\$74,689).

## **Capital Projects Fund**

The Capital Projects Fund is used to account for financial resources and related financial activity for the acquisition and improvement of sites and for the acquisitions, construction, equipping and renovation of buildings. Revenues reflect fiscal year debt issues totaling \$13 million and \$730k of operating transfers of which \$150k are from the General Fund and \$580k from the Special Revenue Fund. Overall, the Capital Project Fund reflects total expenses of \$14.8 million and revenues and other financing sources of \$14.1 million. The Capital Projects fund balance decreased by \$624,603. Year-end budget revision will be necessary to reallocate the budget within functions.

## **Debt Service Fund**

The Debt Service Fund is used to account for the accumulation of resources for, and payment of, general long-term debt and lease obligation principal, interest and related costs. The fund revenues exceeded expenses by \$336,102 due to debt refinancing, favorable market conditions and lower than expected interest costs. Principal and interest payments totaled \$9.7 million in FY15.

## **Enterprise Fund**

The Enterprise Fund is used to account for operations (other than for the general operations) that are financed and operated in a manner similar to a private business enterprise, where the intent of the College is that the costs of providing goods or services to the general public on a continuing basis be financed or recovered primarily through user charges. The operations of the District’s culinary arts, auto labs and miscellaneous student auxiliary items are accounted for in the enterprise funds in a manner similar to accounting for private enterprise operations. The fund experienced a positive financial result with revenues exceeding expenses by \$83,777.

## **Summary**

Overall, the College’s financial condition remains strong and well positioned to meet future fiscal challenges. The College continues to hold a bond rating of Aaa, the highest rating as provided by Moody’s Investor’s Services. As compared to the other 16 WTCS, Gateway has the 4<sup>th</sup> highest equalized value; lowest debt as a percentage of operating expenses at 11.99% and 5<sup>th</sup> highest general fund balance. Moving forward, Management will continue to keep a focus on enrollment trends, community needs and economic indicators to ensure responsible fiscal management.

XI. BOARD MEMBER COMMUNITY REPORTS

# GATEWAY TECHNICAL COLLEGE DISTRICT BOARD

Roll Call \_\_\_\_\_  
Action \_\_\_\_\_  
Information   X    
Discussion \_\_\_\_\_

## BOARD MEMBER COMMUNITY REPORTS

Summary: Board members will share recent contacts.

Governance Policy: Policy 1.5-Board Member Role



XII. NEXT MEETING DATE AND ADJOURN

- A. Regular Meeting - Thursday, October 22, 2015, 8:00 am, Racine Campus, R301
- B. Adjourn