



**Bryan D. Albrecht, Ed.D.**  
President

August 8, 2013

**BURLINGTON CENTER**  
496 McCanna Pkwy.  
Burlington, WI 53105-3623  
262.767.5200

**CENTER FOR BIOSCIENCE  
& INFORMATION  
TECHNOLOGY**  
3520 - 30th Avenue  
Kenosha, WI 53144-1690  
262.564.3600

**ELKHORN CAMPUS**  
400 County Road H  
Elkhorn, WI 53121-2046  
262.741.8200

**HERO (HEALTH AND  
EMERGENCY RESPONSE  
OCCUPATIONS) CENTER**  
380 McCanna Pkwy.  
Burlington, WI 53105-3622  
262.767.5204

**HORIZON CENTER FOR  
TRANSPORTATION  
TECHNOLOGY**  
4940 - 88th Avenue  
Kenosha, WI 53144-7467  
262.564.3900

**SC JOHNSON  
iMET (iNTEGRATED  
MANUFACTURING  
& ENGINEERING  
TECHNOLOGY) CENTER**  
Renaissance Business Park  
2320 Renaissance Blvd.  
Sturtevant, WI 53177-1763  
262.898.7500

**KENOSHA CAMPUS**  
3520 - 30th Avenue  
Kenosha, WI 53144-1690  
262.564.2200

**LAKEVIEW ADVANCED  
TECHNOLOGY CENTER**  
9449 - 88th Avenue (Highway H)  
Pleasant Prairie, WI 53158-2216  
262.564.3400

**RACINE CAMPUS**  
1001 South Main Street  
Racine, WI 53403-1582  
262.619.6200

**WGTD HD**  
Your Gateway to Public Radio  
wgtd.org  
262.564.3800

262.741.8492 TTY  
866.971.7688 VP

EQUAL OPPORTUNITY/ACCESS/  
EMPLOYER AND EDUCATOR  
OFRECE IGUALDAD EN OPORTUNIDADES/  
ACCESO/EMPLEO Y EDUCACIÓN

[www.gtc.edu](http://www.gtc.edu)

**NOTICE OF MEETING**

**GATEWAY TECHNICAL COLLEGE  
DISTRICT BOARD  
Regular Meeting  
Thursday, August 15, 2013 – 8:00 a.m.  
Kenosha Campus  
Center for Bioscience and Information Technology, Room 120  
3520 30<sup>th</sup> Avenue, Kenosha, Wisconsin 53144**

The Gateway Technical College District Board will hold its regular meeting on Thursday, August 15, 2013 at 8:00 a.m. at the Kenosha Campus, Center for Bioscience and Information Technology, Room 120, 3520 30<sup>th</sup> Avenue, Kenosha, Wisconsin 53144. The agenda is included.

Bryan D. Albrecht, Ed.D.  
President and Chief Executive Officer

**GATEWAY TECHNICAL COLLEGE DISTRICT BOARD**  
 Regular Meeting – Thursday, August 15, 2013 – 8:00 a.m.  
 Kenosha Campus  
 Center for Bioscience and Information Technology, Room 120  
 3520 30<sup>th</sup> Avenue  
 Kenosha, Wisconsin 53144

Info. / Disc	Action	Roll Call	<b>AGENDA</b>	Page
			<b>I. Call to Order</b> A. Open Meeting Compliance	3
		X	<b>II. Roll Call</b>	3
	X		<b>III. Oath of Office</b>	3-4
	X		<b>IV. Approval of Agenda</b>	5
	X		<b>V. Approval of Minutes</b> A. June 20, 2013 – Regular Meeting	5
	X		B. July 8, 2013 – Organizational Meeting	6 24
X			<b>VI. Citizen Comments</b>	27
X			<b>VII. Chairperson's Report</b> A. Follow-up on District Board Committee Appointments	28
X			B. President's 2013-2014 Goals	29
X			C. Meeting Evaluation	30
X			D. Board 4 <sup>th</sup> Quarter Goals	31
X			E. District Board Association Meeting	32
X			<b>VIII. President's Report</b> A. Facility Update (W. Whyte)	33
X			B. Sustainability Dashboard (S. Sklba)	34
X			C. Enrollment Strategies (Z. Haywood)	35 36 37
			<b>IX. Operational Agenda</b> (15 min)	38
	X		A. Action Agenda	38
	X		1. Resolution No. B-2013 C.1 and C.2 Demonstration Kitchen Classroom Remodel Lake Building, Racine Campus	39
			B. Consent Agenda	43
			1. Finance	43
			a) Financial Statement and Expenditures over \$2,500	44
			b) Cash and Investment Schedules	52
			2. Personnel Report	56
			3. Grant Awards	59
			4. Contracts for Instructional Delivery	66
			5. Advisory Committee Activity Report	72
			<b>X. Policy Governance Monitoring Reports</b> (15 min)	78
	X		A. Ends Statement Monitoring	78-
			1. End Statement #4 – Gateway models integrity, social responsibility, and continuous improvement in its internal and external processes and relationships. (Z. Haywood and W. Whyte)	79
X			<b>XI. Board Member Community Reports</b> (10 min)	80- 81
X	X		<b>XII. Next Meeting Date and Adjourn</b> A. Regular Meeting – Thursday, September 19, 2013, 8:00 am, Elkhorn Campus B. Adjourn	82

**GATEWAY TECHNICAL COLLEGE DISTRICT BOARD**

**Regular Meeting**

Thursday, August 15, 2013 – 8:00 a.m.

Kenosha Campus

Center for Bioscience and Information Technology, Room 120

3520 30<sup>th</sup> Avenue, Kenosha, Wisconsin 53144

- I. CALL TO ORDER
  - A. Open Meeting Compliance

II. ROLL CALL

William Duncan	_____
Gary Olsen	_____
Bethany Ormseth	_____
Scott Pierce	_____
Neville Simpson	_____
Sheila Webber	_____
Roger Zacharias	_____
Pamela Zenner-Richards	_____
Ram Bhatia	_____

III. OATH OF OFFICE

**Our Positive Core – Gateway Technical College District Board**

Our shared strengths as a Board that we draw upon to do our work:

- Belief in the value of Gateway Technical College
- Commitment to our community
- Common sense of mission
- Mutual respect
- Sense of humor
- Open-mindedness & willingness to question

**GATEWAY TECHNICAL COLLEGE DISTRICT BOARD  
ORGANIZATIONAL MEETING**

Roll Call \_\_\_\_\_  
Action   X    
Information \_\_\_\_\_  
Discussion \_\_\_\_\_

**OATH OF OFFICE**

Summary of Item: The following board appointees are required to take the Oath of Office:

Sheila Webber

"I, \_\_\_\_\_, swear that I will support the Constitution of the United States and the Constitution of the State of Wisconsin, and will faithfully and impartially discharge the duties of the office of Technical College District Board Member for Gateway Technical College to the best of my ability."

IV. APPROVAL OF AGENDA

Items on the Consent Agenda for discussion

V. APPROVAL OF MINUTES

A. June 20, 2013 – Regular Meeting

B. July 8, 2013 – Organizational Meeting

GATEWAY TECHNICAL COLLEGE DISTRICT BOARD
Regular Meeting
June 20, 2013

The Gateway Technical College District Board met on Thursday, June 20, 2013 at the Burlington Center, 496 McCanna Parkway, Room 100, Burlington, Wisconsin 53105. The meeting was called to order at 8:00 am by Ram Bhatia, Chairperson.

**I. Call to Order**

**A. Open Meeting Compliance**

- i. K. Jackson confirmed the meeting was duly noticed in accordance with state statutes for open meeting compliance.

**II. Roll Call**

Todd Battle	Present
Ram Bhatia	Present
Gary Olsen	Present
Scott Pierce	Present
Leslie Scherrer	Present
Neville Simpson	Present
Jenny Trick	Present
Roger Zacharias	Present
Pamela Zenner-Richards	Present

Also in attendance were Bryan Albrecht, Kamaljit Jackson, Mary Harpe and 9 citizens/reporters.

**III. Executive Session**

**A. Roll Call**

Todd Battle	Present
Ram Bhatia	Present
Gary Olsen	Present
Scott Pierce	Present
Leslie Scherrer	Present
Neville Simpson	Present
Jenny Trick	Present
Roger Zacharias	Present
Pamela Zenner-Richards	Present

Also in attendance was William Whyte.

At approximately 8:01 am, it was moved by P. Zenner-Richards and seconded by L. Scherrer and carried to approve the District Board move into executive session

At approximately 8:55 am, the Regular Meeting of the Gateway District Board was called to order by Ram Bhatia, Chairperson

Immediately following the call to order it was moved by P. Zenner-Richards and seconded by J. Trick that the Board has agreed to renew President Bryan Albrecht's contract and the Board is

giving President Albrecht a 2% base salary increase consistent with all non-represented employees and a discretionary performance bonus of \$7500 based on President Albrecht's performance evaluation. The motion was unanimously approved via roll call vote.

Aye: 9

No: 0

Abstaining: 0

**IV. Approval of Agenda**

A. It was moved by S. Pierce, seconded by G. Olsen and carried to approve the agenda.

**V. Approval of Minutes**

A. It was moved by T. Battle, seconded by N. Simpson and carried to approve the minutes of the May 6, 2013 Public Budget Hearing and the May 16, 2013 Regular Board meeting.

**VI. Citizen Comments**

A. No citizen comments were submitted.

**VII. Chairperson's Report**

- A. Meeting Evaluation : Received 7 responses; good feedback on meeting
- B. Board Goals Reminder (4<sup>th</sup> Quarter): Reminder to complete goals sheet for the 4<sup>th</sup> quarter
- C. Retreat Planning: After July organizational meeting, the Board will go immediately into retreat

**VIII. President's Report**

- A. Bryan Albrecht offered announcements as follows:
  - 1. Journey Members in attendance:
    - i. Diana Soares
    - ii. Terry Nelson
  - B. Presented D. Sherwood with plaque from Lakeview Advance Technology Center
  - C. Thanked P. Zenner-Richards for attending the Governor's meeting at Uline
  - D. Apprenticeships (D. Mews and S. Breitzman):
    - 1. Three different areas
      - a. Service Trades
      - b. Construction Trades
      - c. Industrial Trades
    - 2. Apprentice must have the job first then take classes at Gateway. The apprentice gets on-the-job training and goes to school at the same time
    - 3. Culmination of a variety of different modalities. There are several different methods of entry:
      - i. Employers
      - ii. Committees
      - iii. Union and Non-union
      - iv. Sole Sponsors
      - v. Individual Business
      - vi. Apprentices are brought on and paid for their time on the job and assigned a journey worker who mentors them on specific work process based on contract

**IX. Operational Agenda**

**A. Action Agenda**

**1. Resolution No. F-2013-2014A.2-Resolution Awarding the Sale of \$6,750,000 General Obligation Promissory Notes, Series 2013-2014A**

The administration is recommending Board approval of a resolution awarding the sale of \$6,750,000 of General Obligation Promissory Notes, Series 2013-2014A; \$1,500,000 for the public purpose of financing building remodeling and improvement projects; \$5,250,000 for the public purpose of financing the acquisition of movable equipment. The actual sale will take place at the Board meeting. This debt issue is included in the Board-approved budget for FY 2014.

**Attachment A:**

John A. Mehan, Managing Director, BAIRD presented the final pricing summary:

Issue Summary:

Description: General Obligation Promissory Notes, Series 2013-14A

Amount: \$6,750,000

Dated and Settlement Date: July 2, 2013

Maturities: April 1, 2016-2023

First Interest Payment: April 1, 2014

First Call Date: Callable 4/1/2021 or any date thereafter

Moody's Rating: Aaa

True Interest Cost: 2.3720%

Following discussion, it was moved by R. Zacharias, seconded by G. Olsen, and carried by roll call vote to approve Resolution No. F-2013-2014A.2-Resolution Awarding the Sale of \$6,750,000 General Obligation Promissory Notes, Series 2013-2014A:

Aye: 9

No: 0

Abstaining: 0

**2. Resolution No. F-2013-2014B-Resolution Authorizing the Issuance and Establishing Parameters for the Sale of Not to Exceed \$1,500,000 General Obligation Promissory Notes, Series 2013-2014B**

The administration is recommending Board approval of a resolution authorizing the issuance and establishing parameters for the sale of not to exceed \$1,500,000 of General Obligation Promissory Notes, Series 2013-2014B, for the public purpose of financing building remodeling and improvement projects. The actual sale will take place after the Board meeting. This debt issue is included in the Board-approved budget for FY 2014.

Following discussion it was moved by R. Zacharias, seconded by G. Olsen and carried by roll call vote to approve Resolution No. F-2013-2014B-Resolution Authorizing the Issuance and Establishing Parameters for the Sale of Not to Exceed \$1,500,000 General Obligation Promissory Notes, Series 2013-2014B:

Aye: 9

No: 0

Abstaining: 0

**3. Resolution B-2013 B.1-Strategic Facility Planning Guide for State Submission - Fiscal Years 2013-14, 2014-2015 and 2015-2016**



Wisconsin Technical College System Board Administrative Bulletin 04-01 states as follows: "Annual, each Wisconsin Technical College District is required to prepare and submit a Three-Year Facilities Plan to the Wisconsin Technical College System Board (WTCSB). The Plan must be approved by the District Board and submitted no later than August 1<sup>st</sup> of each year. The reporting shall be on a fiscal year basis and include information for the current and next two fiscal years. The plan will be accepted and reviewed by the WTCSB but no action will be taken, as each project continues to be subject to review and approval on an individual basis pursuant to s.38.04(10), Stats."

Following discussion it was moved by R. Zacharias, seconded by G. Olsen and carried to approve Resolution B-2013 B.1-Strategic Facility Planning Guide for State Submission - Fiscal Years 2013-14, 2014-2015 and 2015-2016

**4. Resolution No. N-2013A.1-Resolution Approving the Gateway Red Hawks Mascot as the Official Mascot to Represent Gateway Technical College District**

Request for Gateway Board of Trustees to approve the Gateway Red Hawks mascot as the official mascot to represent Gateway Technical College District

Following discussion it was moved by L. Scherrer, seconded by T. Battle and carried to approve Resolution No. N-2013A.1-Resolution Approving the Gateway Red Hawks Mascot as the Official Mascot to Represent Gateway Technical College District

**B. Consent Agenda**

It was moved by R. Zacharias, seconded by P. Zenner-Richards and carried that the Board approve the following items in the consent agenda:

1. **Finance**
  - a) **Financial Statement and Expenditures over \$2,500:** Approved the financial statement and expenditures as of May 31, 2013.
  - b) **Cash and Investment Schedules:** Approved the monthly cash reconciliation, investment schedule and investment report.
2. **Personnel Report:** Approved the personnel report of one (1) reclassification; one (1) retirement; two (2) resignation; one (1) termination; four (4) employment approvals-casual, non-instructional; and no employment approvals-adjunct faculty.
3. **Approval of Bids:**
  - a) Approved Bid No. 1408: Technical Building Entrance Modification and Stair Repair - Racine Campus
  - b) Approved Bid No. 1414: Boiler and Pump Equipment Package - Racine Campus
4. **Grant Awards:** Approved the Grant Awards – June 2013
5. **Program Approval:** Approved the Fire Medic Associate Degree (Board approval is requested for a new Fire Medic program. The program will combine the skills currently taught in the Fire Protection Technician program with those taught in the Paramedic program. The program will replace the current Fire Protection Technician program beginning in Fall 2014).
6. **Contracts for Instructional Delivery:** Approved the contracts for instructional delivery report for May 2013
7. **Advisory Committee Activity Report:** Approved the advisory committee 2013-2014 meeting schedule and new members as of June 1, 2013

8. **Board Policy Monitoring Policies 1.14 – Budget Process; 2.1 – President's Responsibilities; 2.4 – Chief Executive Compensation Review:** Approved policies 1.14, 2.1 and 2.4.

**X. Policy Governance Monitoring Reports**

**A. Ends Statement Monitoring (D. Davidson)**

1. Ends Statement #1: Gateway provides innovative and entrepreneurial programs and services that align with the educational, economic, and tri-county community needs for students regional and global competitiveness
2. Contracts for Service:
  - 263 Contracts for Service (7/1/12 – 5/31/13)
  - 16 Workforce Advancement Training Grants
  - Training and Technical Assistance Topics
    - Supervision
    - Software Applications
    - Lean Six Sigma
    - Manufacturing Technologies
3. Bootcamps:
  - 3 CNC Machine Operator Bootcamps
  - 2 Welding/Fabrication Bootcamps
  - 1 Machine Repair Bootcamp
  - 2 CNA/ELL-ABE Bootcamps
  - 2 CNC Bridge Bootcamps
4. Professional Development Workshops:
  - Fall 2012
    - 22 Workshops
    - Served 138 people
  - Spring 2013
    - 53 Workshops
    - Served 408 people
  - Survey for Fall 2013 workshops just closed
5. New Customized Training and Workshop Opportunities:
  - CAD Solidworks
  - Robot troubleshooting
  - Robot programming
  - Programmable Logic Controls (PLCs)
  - Fabrication and Welding
  - Advanced CNC (set-up and programming)
  - Quality Process Improvement
  - Bi-Lingual Instruction
6. New Opportunities:
  - Penn Foster Online and Hybrid Course Delivery
  - Industrial Academy Courses
    - Technology Orientation
    - Technical Math Skills
    - Introduction to Print Reading and Technical Drawings
    - Industrial Safety

- Quality Controls Systems
- 7. Economic Development Programs
  - Business Start Up and Accelerations
    - Rapid Growth and Innovation
    - New Patent Workshops
  - GrowthWheel® Tool
    - Business Concept
    - Organization
    - Client Relations
    - Operations
  - Fab Lab:
    - Inventors and Entrepreneurs Club
    - Enactus® Student Entrepreneurship Club
    - Local companies

Following discussion, it was moved by R. Zacharias, seconded by G. Olsen and carried that this report is evidence that the college is making progress on Ends Statement #1

## B. Executive Limitations

### A. Strategic Plan Vision 3.2.1 (A. Whynott)

1. Strategic Directions:
  - a. Students will experience educational excellence and academic success
  - b. Gateway will empower students to attain credentials and find employment in their career field
  - c. Employees will work together in a college culture of innovation and opportunity
  - d. Gateway will strategically align programs and services with changing industry needs
  - e. Gateway will be valued as the community's college and a place of opportunity for all
2. Year One Activities:
  - a. Strategic directions, goals and measures communicated to all staff
  - b. Launched committee for each of the five strategic directions
  - c. Committees developed 3 year action plans
  - d. Committees developed additional measures and targets
  - e. ELC reviewed and approved all action plans
  - f. Monthly progress reports to Board
3. College Measures:
 

Measure	Baseline	Year 1
Graduation Rate	26.45%	Available in fall 2013
Graduate job placement rate	85.5% employed 57.5% related	Available in spring 2014
PACE Teamwork rating	3.63	Available fall 2014
Number of Programs Aligned with Industry Certifications	56% (28 of 50)	Available in fall 2013
Enrollment	23,941 6,217 FTE	Available in August 2013
4. Next Steps:
  - a. Final reports on Year 1 objectives due July 1
  - b. ELC reviews Year 1 outcomes and makes process improvements for Year 2 if needed
  - c. Committees reconvene and begin work on Year 2 objectives
  - d. Monthly monitoring by ELC and Board

Following discussion, it was moved by R. Zacharias, seconded by G. Olsen and carried that this report is evidence that the college is making progress on Strategic Plan Vision 3.2.1

C. Strategic Plan Monitoring – Vision 3.2.1 (B. Whyte and B. Thomey)

A. Strategic Direction #3 – Employees will work together in a college culture of innovation and opportunity

1. Executive Limitation 3.1.6: The President shall not operate without a Board-approved three-year strategic plan
2. Goals:
  - a. Gateway will engage employees to build a collaborative college climate characterized by high productivity, employee satisfaction, and trust in leadership
  - b. Gateway will create opportunities for employees across the college to work together on continuous quality improvement
3. Measures:

MEASURES	2011-12 BASELINE	2012-13 TARGET	2013-14 ACTUAL	2014-15 ACTUAL
1. Teamwork climate category rating (PACE)	3.63	3.69		
2. Top Workplace Survey	#21 – large employer	20		
3. WELCOA	Gold Award	Platinum Award		
4. Number of cross functional participants involved in Six Sigma training.	-----	4		

4. Objectives – Goal #1: Gateway will engage employees to build a collaborative college climate characterized by high productivity, employee satisfaction, and trust in leadership
  - a. 1.1 Information Resources: Employees need a central source of information that is easily accessible and reliable
  - b. 1.2 Leadership Training: The post ACT 10 environment is a significant change for Deans and management. Three union contracts were condensed into an employee handbook requiring much more problem solving/decision making
  - c. 1.3 Employee Learning Day: Once a year all employees attend an in-service with a focus on professional development
5. Goal #1 Activities:
  - a. Finalize and implement a new intranet site. All Divisions will continually update and improve their respective sites
  - b. The Leadership Training committee will coordinate bi-monthly half-day mandatory training for all management employees
  - c. A volunteer cross-functional group of employees will plan and coordinate the annual Employee Learning Day activities
6. Objectives – Goal #2: Gateway will create opportunities for employees across the college to work together on continuous quality improvement
  - a. 2.1 Wellness Committee: Gateway received recognition three years ago as a 'Well Workplace' with a Gold Award from WELCOA. A cross-functional team meets monthly to plan and monitor activities

- b. 2.2 Performance Appraisal Task Force: A new performance appraisal form is needed for all non-faculty employee groups that includes a self-evaluation element
  - c. 2.3. Six Sigma: A continuous quality improvement initiative with a cross-functional group of employees trained and projects identified
7. Goal #2 Activities:
- a. The Wellness Committee will continue and will submit a new application to WELCOA to renew Gateway's recognition as a 'Well Workplace'
  - b. A new performance appraisal form will be in place for this year's activity. Management will be trained in June of 2013
  - c. The initial Six Sigma will complete training and implement their project. Additional employees will be recruited to be trained and the process will cascade throughout the organization

**Following discussion, it was moved by R. Zacharias, seconded by G. Olsen and carried that this report is evidence that the college is making progress on Strategic Direction #3**

**XI. Board Member Community Reports:**

- R. Bhatia attended the Foundation Board Meeting and Uline meeting with the Governor
- R. Zacharias continues to field questions on Gateway's future plans for facilities

**XII. Next Meeting Date and Adjourn**

- A. Organizational Meeting – Monday, July 8, 2013, 8:00 am
- B. Board Retreat – Monday, July 8, 2013, 10:00 am
- C. **At approximately 10:37 a.m. it was moved by S. Pierce, seconded by R. Zacharias and carried that the meeting adjourn.**

Submitted by,

Gary Olsen  
Secretary

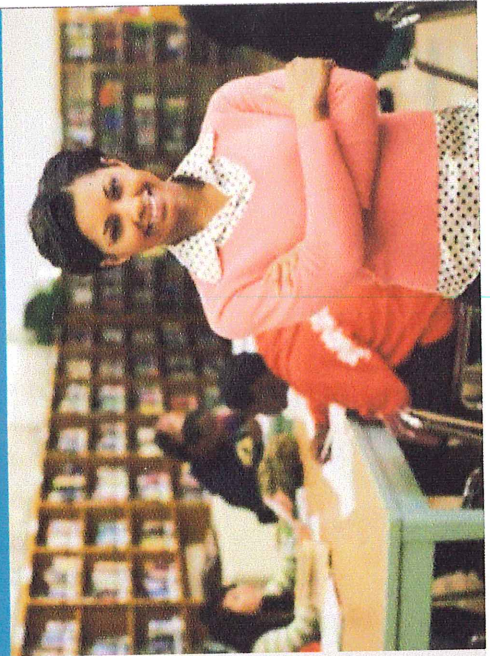
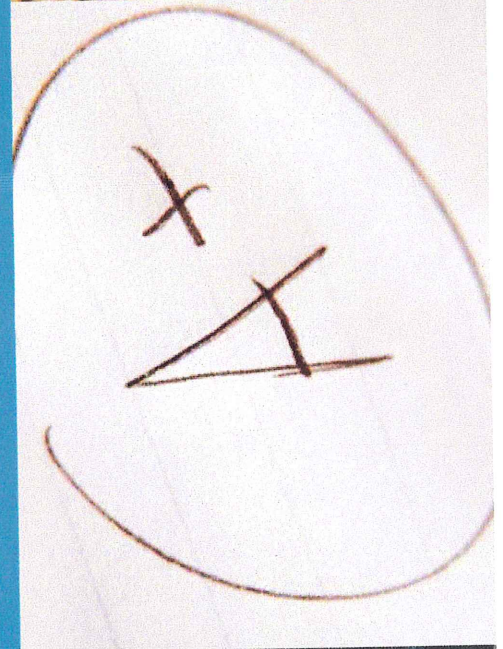
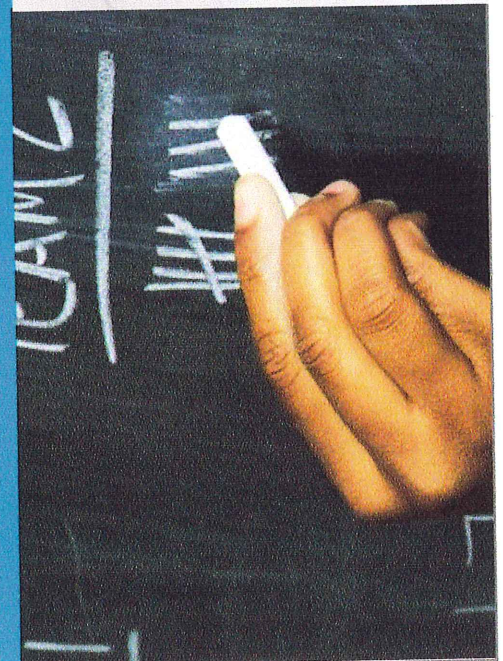
BAIRD

# Gateway Technical College District

Final Pricing Summary  
June 20, 2013

John A. Mehan, Managing Director

[jmehan@rwbaird.com](mailto:jmehan@rwbaird.com)  
777 East Wisconsin Avenue  
Milwaukee, WI 53202  
Phone 414.765.3827  
[rwbaird.com/publicfinance](http://rwbaird.com/publicfinance)



Gateway Technical College District

<b>Issue Summary</b>	
<b>Description:</b>	General Obligation Promissory Notes, Series 2013-14A
<b>Amount:</b>	\$6,750,000
<b>Dated &amp; Settlement Date:</b>	July 2, 2013
<b>Maturities:</b>	April 1, 2016 - 2023
<b>First Interest Payment:</b>	April 1, 2014
<b>First Call Date:</b>	Callable 4/1/2021 or any date thereafter
<b>Moody's Rating:</b>	Aaa
<b>True Interest Cost:</b>	2.3720%



# Gateway Technical College District

Fiscal Year 2013-14

Financing Plan - Calendar Year Basis

YEAR DUE	FINAL		Preliminary		Preliminary		Preliminary		2013-14 TOTAL	Future Issues Each Year (Principal & Interest)	LESS: FUNDS APPLIED (3)	2013 Act. Levy = \$3,275,000 2014 Est. Levy = \$8,882,000	COMBINED DEBT SERVICE	ANNUAL DEBT SERVICE % CHANGE
	PRINCIPAL (4/1)	INTEREST (4/1 & 10/1)	PRINCIPAL (4/1)	INTEREST (4/1 & 10/1)	PRINCIPAL (4/1)	INTEREST (4/1 & 10/1)	PRINCIPAL (4/1)	INTEREST (4/1 & 10/1)						
2013	\$8,431,298	\$223,003	\$1,500,000	\$2,500	\$1,500,000	\$36,528	\$115,000	\$39,167	\$0	(\$156,298)	\$8,275,000	\$9,671,929	7.34%	
2014	\$8,406,024	\$178,800	\$1,500,000	\$42,750	\$1,500,000	\$47,600	\$150,000	\$57,700	\$675,000		\$8,757,222	\$10,701,620	9.02%	
2015	\$8,285,079	\$171,050	\$1,250,000	\$38,175	\$1,250,000	\$42,800	\$120,000	\$52,400	\$1,501,513			\$11,767,284	10.65%	
2016	\$7,695,683	\$155,400	\$1,250,000	\$33,525	\$1,250,000	\$37,900	\$125,000	\$46,300	\$3,841,063			\$12,953,713	9.96%	
2017	\$6,428,096	\$805,000	\$1,500,000	\$28,800	\$1,500,000	\$32,700	\$135,000	\$40,000	\$6,660,838			\$14,254,020	10.08%	
2018	\$4,791,925	\$139,450	\$1,500,000	\$23,925	\$1,500,000	\$27,200	\$140,000	\$33,400	\$8,302,763			\$15,679,405	10.04%	
2019	\$4,447,708	\$825,000	\$1,500,000	\$18,900	\$1,500,000	\$21,500	\$145,000	\$26,500	\$10,458,538			\$17,256,786	10.00%	
2020	\$3,720,068	\$93,900	\$1,500,000	\$13,725	\$1,500,000	\$15,600	\$150,000	\$11,800	\$15,779,488			\$18,982,361	10.06%	
2021	\$2,975,649	\$875,000	\$1,500,000	\$8,400	\$1,500,000	\$9,500	\$155,000	\$11,800	\$17,203,138			\$19,038,525	0.04%	
2022	\$1,718,711	\$41,400	\$1,500,000	\$2,850	\$1,500,000	\$3,200	\$160,000	\$4,000	\$19,038,525			\$19,038,525	0.25%	
2023	\$283,500	\$13,950	\$1,500,000		\$1,500,000				\$19,038,525			\$19,038,525	0.00%	
2024			\$1,500,000		\$1,250,000				\$19,038,525			\$19,038,525	0.00%	
2025			\$1,500,000		\$1,250,000				\$19,038,525			\$19,038,525	0.00%	
2026			\$1,500,000		\$1,250,000				\$19,038,525			\$19,038,525	0.00%	
2027			\$1,500,000		\$1,250,000				\$19,038,525			\$19,038,525	0.00%	
2028			\$1,500,000		\$1,250,000				\$19,038,525			\$19,038,525	0.00%	
2029			\$1,500,000		\$1,250,000				\$19,038,525			\$19,038,525	0.00%	
2030			\$1,500,000		\$1,250,000				\$19,038,525			\$19,038,525	0.00%	
2031			\$1,500,000		\$1,250,000				\$19,038,525			\$19,038,525	0.00%	
2032			\$1,500,000		\$1,250,000				\$19,038,525			\$19,038,525	0.00%	
			\$57,183,740	\$6,750,000	\$1,204,003	\$1,500,000	\$263,550	\$274,528	\$13,072,648	\$248,536,613	(\$156,298)	\$318,636,702		

(1) 2013-14A borrowing consists of \$5,250 million of equipment and \$1,500 million of remodeling.

(2) Assumes annual borrowings of \$15,000,000 beginning 2014 at a rate of 4.50%.

(3) Premium generated from Notes.



**Gateway Technical College District**  
**Debt Service Schedule**

Period Ending	Principal	Coupon	Interest	Debt Service	Annual Debt Service
07/02/2013			133,603.33	133,603.33	
04/01/2014			89,400.00	89,400.00	223,003.33
10/01/2014			89,400.00	89,400.00	
04/01/2015			89,400.00	89,400.00	178,800.00
10/01/2015	775,000	2.000%	89,400.00	864,400.00	
04/01/2016			81,650.00	81,650.00	946,050.00
10/01/2016			81,650.00	871,650.00	
04/01/2017	790,000	2.000%	73,750.00	73,750.00	945,400.00
10/01/2017			73,750.00	878,750.00	
04/01/2018	805,000	2.000%	65,700.00	65,700.00	944,450.00
10/01/2018			65,700.00	890,700.00	
04/01/2019	825,000	3.000%	53,325.00	53,325.00	944,025.00
10/01/2019			53,325.00	903,325.00	
04/01/2020	850,000	3.000%	40,575.00	40,575.00	943,900.00
10/01/2020			40,575.00	915,575.00	
04/01/2021	875,000	3.000%	27,450.00	27,450.00	943,025.00
10/01/2021			27,450.00	927,450.00	
04/01/2022	900,000	3.000%	13,950.00	13,950.00	941,400.00
10/01/2022			13,950.00	943,950.00	
04/01/2023	930,000	3.000%			943,950.00
10/01/2023					
	6,750,000		1,204,003.33	7,954,003.33	7,954,003.33

# MOODY'S

## INVESTORS SERVICE

### New Issue: Moody's assigns Aaa rating to Gateway Technical College District's (WI) \$6.8 million General Obligation Promissory Notes, Series 2013-14A

---

Global Credit Research - 17 Jun 2013

#### Aaa rating applies to \$51.3 million of post-sale GOULT debt

GATEWAY TECHNICAL COLLEGE DISTRICT, WI  
Community Colleges (Revenue-Backed)  
WI

Moody's Rating		
ISSUE		RATING
General Obligation Promissory Notes, Series 2013-14A		Aaa
<b>Sale Amount</b>	\$6,750,000	
<b>Expected Sale Date</b>	06/19/13	
<b>Rating Description</b>	General Obligation	

Moody's Outlook NOO

#### Opinion

NEW YORK, June 17, 2013 --Moody's Investors Service has assigned a Aaa rating to Gateway Technical College District's (WI) \$6.8 million General Obligation Promissory Notes, Series 2013-14A. Concurrently, Moody's has affirmed the Aaa rating on the district's outstanding general obligation debt. Post-sale, the district will have \$51.3 million of outstanding general obligation debt.

#### SUMMARY RATINGS RATIONALE

The notes are secured by the district's general obligation unlimited tax pledge. Proceeds of the notes will finance various building remodeling and improvements as well as moveable equipment purchases. Assignment and affirmation of the Aaa rating reflects the district's sizeable tax base located between the cities of Milwaukee (general obligation rated Aa2/stable outlook) and Chicago (general obligation rated Aa3/rating under review); sound financial operations supported by healthy reserves and an average debt burden with rapid principal amortization.

#### STRENGTHS

- Large and diverse tax base located between Chicago and Milwaukee
- Presence of healthy General Fund reserves
- Strong fiscal policies, monitoring of programs, and long-range planning

#### CHALLENGES

- Revenue pressures resulting from state imposed levy freeze and reductions in state aid revenues
- Moderate declines in enrollment projected for fiscal 2013

#### DETAILED CREDIT DISCUSSION

##### LARGE TAX BASE BENEFITS FROM LOCATION BETWEEN MILWAUKEE AND CHICAGO

Gateway Technical College District is located in southeastern Wisconsin (general obligation rated Aa2/stable outlook) and includes three campuses. The college's main campus is located in the city of Kenosha (general

obligation rated Aa2/stable outlook) with additional campuses in the city of Racine and in rural Walworth County (general obligation rated Aa1). The district includes all of Kenosha County (general obligation rated Aa1) and Walworth County, and nearly all of Racine County (general obligation rated Aa1). The college offers numerous higher education and technical training programs. The local economy is diverse with health care and manufacturing presences. District officials work with a program advisory group and review and retool programs annually depending on local employer needs and demand. The district plans to expand its culinary, and various manufacturing programs and also add a veterinary tech program.

While still sizeable, the district's \$40 billion tax base has experienced three consecutive declines in valuation, of 4.2%, 2.4%, and 6.7% in the last three years due largely to depreciation in the tax base's residential sector. As a result, the tax base has contracted at an annual rate of 2.0%. We expect the tax base to remain relatively stable, despite recent declines in valuation, due to the availability of low cost land for development and the district's favorable location in the Milwaukee-Chicago corridor. At 9.0% in April 2013, the unemployment rate in Racine County tracked higher than the state and national rates of 7.2% and 7.1% during the same time period. According to the 2006-2010 American Community Survey, the county's resident income profile roughly tracks the state and nation with per capita income at 98.9% and 96.3% of the state and nation, respectively.

#### SOUND FINANCIAL OPERATIONS WITH HEALTHY RESERVES DESPITE STATE IMPOSED REVENUE PRESSURES

We expect the district's financial operations to remain sound due to a history of conservative budgeting, stable enrollment, and the presence of healthy General Fund reserves. Due to conservative budgeting assumptions, the district has closed the last several fiscal years with operating surpluses in the General Fund. In fiscal 2011 the General Fund balance increased by \$1.5 million to \$19.7 million, or a healthy 24.9% of General Fund revenues. Management attributed the operating surplus to conservative budgeting and increased enrollment. The operating surplus was net of a \$1.2 million transfer to the district's Capital Projects Fund for future capital needs. The district originally budgeted to use \$780,000 in reserves for fiscal 2012; however, audited results reflect an operating surplus and growth to the General Fund reserve of approximately \$1.4 million. The operating surplus was due to better than budgeted enrollment, overall expenditure reductions, and a \$1 million transfer in from a special revenue fund. The district has a General Fund balance policy to maintain reserves between 17% to 25% of operating expenditures for cash flow purposes.

Due to the implementation of strict levy limits and a reduction in state aid, the district faced several challenges in fiscal 2012. Property taxes are the largest source of revenue for the district and comprised 61.4% of General Fund revenues in fiscal 2012. Historically, technical colleges in Wisconsin have had a statutory operating mill cap of 1.5 mills. Gateway Technical College has historically maintained significant margin under the statutory cap, most recently levying 1.24 mills for operations in fiscal 2012. However, for fiscal years 2012 and 2013, property tax revenues are essentially frozen at 2011 levels, although there is the possibility to increase the levy rate up to 1.5 mills to offset declines in assessed valuations. Due to the decline in valuation in 2012, management increased the operating mill rate to 1.34 mills to offset the decline. For fiscal 2013, management expects favorable financial results with an operating surplus of \$1 million that will be transferred to the district's Capital Project Funds.

After property taxes, program fees and state aid are the largest sources of revenue and accounted for 22.0% and 7.8% of General Fund revenues in fiscal 2012, respectively. In fiscal 2011, the state reduced the district's aid by approximately 30% and is expected to remain flat going forward. Act 10, passed by the state legislature in 2011, requires increased contributions to healthcare and the Wisconsin Retirement System (WRS) from staff, shifting the burden from the district to employees. However, as the district's faculty contract did not expire until the end of fiscal 2012, the district was not able to take advantage of the full shift in fiscal 2012. Notably, the district expects to realize approximately \$3 million of annual savings from faculty employee required contributions to the Wisconsin Retirement System (WRS) beginning fiscal 2013, offsetting the reduction in state aid.

Program fees, or tuition, are set by the state, with a 4.5% increase allowable for fiscal 2013. While full-time equivalent (FTE) enrollment, which drives tuition, program and material fees, had been growing at a strong average annual rate of 5.4% between fiscal 2007 and 2012, officials report enrollment is down 7.0% from fiscal 2012 based on summer, fall, and spring enrollment figures. The district's president recently enacted an action plan to address enrollment and work to reverse the decline in enrollment. Future credit reviews will focus on management's ability to address declines in enrollment and the impact such declines may have on the district's financial profile.

#### MANAGEABLE DEBT BURDEN WITH RAPID PRINCIPAL AMORTIZATION

We expect the district's debt burden to remain manageable due to the district's low level of direct debt and rapid

principal amortization. At 0.1% of full valuation, the district's direct debt burden matches the state median for technical college districts. The district's overall debt burden, at 3.0% of full valuation, is slightly elevated due to borrowing by overlapping entities. Principal amortization is rapid with all debt repaid within ten years. All of the district's debt is fixed rate and the district is not a party to any interest rate swap agreements.

Beginning in fiscal 2013, the district contributes only the employer portion of contributions to the system. Contributions totaled approximately \$5.4 million in fiscal 2012, or a manageable 6.2% of operating revenues. The district has historically made its required contributions to WRS. Moody's adjusted net pension liability (ANPL) for the district, under our methodology for adjusting reported pension data, was \$63 million for fiscal 2010, or 0.77 times operating revenues, inclusive of the General Fund and Debt Service Fund. This compares favorably to approximately 1.0 times on average for local governments. Moody's ANPL reflects certain adjustments we make to improve comparability of reported pension liabilities. The adjustments are not intended to replace the district's reported contribution information, but to improve comparability with other rated entities. We determined the district's share of liability for WRS in proportion to its contributions to the plan and covered payroll.

#### WHAT COULD CHANGE THE RATING DOWN:

- Significant erosion of the district's tax base
- Material declines in the district's General Fund reserves and liquidity

#### KEY STATISTICS:

2010 Census district population: 195,408 (3.5% increase since 2000)

2012/2013 estimated enrollment: 5,800

2012 Full valuation: \$40.0 billion

Racine County 2006-2010 per capita income: \$26,321 (98.9% of state; 96.3% of US)

Racine County 2006-2010 Median household income: \$53,855 (104.4% of state; 103.7% of US)

Fiscal 2012 General Fund balance: \$21.2 million (26.6% of General Fund revenues)

Racine County unemployment rate (April 2013): 9.0% (state at 7.2%; US at 7.1%)

Direct debt burden: 0.1%

Overall debt burden: 3.0%

Principal amortization (10 years): 100%

Moody's Adjusted Net Pension Liability (ANPL): \$63 million (0.77 times operating revenues)

Post-sale general obligation debt outstanding: \$51.3 million

#### PRINCIPAL METHODOLOGY

The principal methodology used in this rating was General Obligation Bonds Issued by US Local Governments published in April 2013. Please see the Credit Policy page on [www.moodys.com](http://www.moodys.com) for a copy of this methodology.

#### REGULATORY DISCLOSURES

For ratings issued on a program, series or category/class of debt, this announcement provides certain regulatory disclosures in relation to each rating of a subsequently issued bond or note of the same series or category/class of debt or pursuant to a program for which the ratings are derived exclusively from existing ratings in accordance with Moody's rating practices. For ratings issued on a support provider, this announcement provides certain regulatory disclosures in relation to the rating action on the support provider and in relation to each particular rating action for securities that derive their credit ratings from the support provider's credit rating. For provisional ratings, this announcement provides certain regulatory disclosures in relation to the provisional rating assigned, and in relation to a definitive rating that may be assigned subsequent to the final issuance of the debt, in each case where the transaction structure and terms have not changed prior to the assignment of the definitive rating in a manner that would have affected the rating. For further information please see the ratings tab on the issuer/entity page for

the respective issuer on [www.moodys.com](http://www.moodys.com).

Regulatory disclosures contained in this press release apply to the credit rating and, if applicable, the related rating outlook or rating review.

Please see [www.moodys.com](http://www.moodys.com) for any updates on changes to the lead rating analyst and to the Moody's legal entity that has issued the rating.

Please see the ratings tab on the issuer/entity page on [www.moodys.com](http://www.moodys.com) for additional regulatory disclosures for each credit rating.

#### Analysts

Tatiana Killen  
Lead Analyst  
Public Finance Group  
Moody's Investors Service

Mark G. Lazarus  
Additional Contact  
Public Finance Group  
Moody's Investors Service

#### Contacts

Journalists: (212) 553-0376  
Research Clients: (212) 553-1653

Moody's Investors Service, Inc.  
250 Greenwich Street  
New York, NY 10007  
USA



© 2013 Moody's Investors Service, Inc. and/or its licensors and affiliates (collectively, "MOODY'S"). All rights reserved.

**CREDIT RATINGS ISSUED BY MOODY'S INVESTORS SERVICE, INC. ("MIS") AND ITS AFFILIATES ARE MOODY'S CURRENT OPINIONS OF THE RELATIVE FUTURE CREDIT RISK OF ENTITIES, CREDIT COMMITMENTS, OR DEBT OR DEBT-LIKE SECURITIES, AND CREDIT RATINGS AND RESEARCH PUBLICATIONS PUBLISHED BY MOODY'S ("MOODY'S PUBLICATIONS") MAY INCLUDE MOODY'S CURRENT OPINIONS OF THE RELATIVE FUTURE CREDIT RISK OF ENTITIES, CREDIT COMMITMENTS, OR DEBT OR DEBT-LIKE SECURITIES. MOODY'S DEFINES CREDIT RISK AS THE RISK THAT AN ENTITY MAY NOT MEET ITS CONTRACTUAL, FINANCIAL OBLIGATIONS AS THEY COME DUE AND ANY ESTIMATED FINANCIAL LOSS IN THE EVENT OF DEFAULT. CREDIT RATINGS DO NOT ADDRESS ANY OTHER RISK, INCLUDING BUT NOT LIMITED TO: LIQUIDITY RISK, MARKET VALUE RISK, OR PRICE VOLATILITY. CREDIT RATINGS AND MOODY'S OPINIONS INCLUDED IN MOODY'S PUBLICATIONS ARE NOT STATEMENTS OF CURRENT OR HISTORICAL FACT. CREDIT RATINGS AND MOODY'S PUBLICATIONS DO NOT CONSTITUTE OR PROVIDE INVESTMENT OR FINANCIAL ADVICE, AND CREDIT RATINGS AND MOODY'S PUBLICATIONS ARE NOT AND DO NOT PROVIDE RECOMMENDATIONS TO PURCHASE, SELL, OR HOLD PARTICULAR SECURITIES. NEITHER CREDIT RATINGS NOR MOODY'S PUBLICATIONS COMMENT ON THE SUITABILITY OF AN INVESTMENT FOR**

**ANY PARTICULAR INVESTOR. MOODY'S ISSUES ITS CREDIT RATINGS AND PUBLISHES MOODY'S PUBLICATIONS WITH THE EXPECTATION AND UNDERSTANDING THAT EACH INVESTOR WILL MAKE ITS OWN STUDY AND EVALUATION OF EACH SECURITY THAT IS UNDER CONSIDERATION FOR PURCHASE, HOLDING, OR SALE.**

ALL INFORMATION CONTAINED HEREIN IS PROTECTED BY LAW, INCLUDING BUT NOT LIMITED TO, COPYRIGHT LAW, AND NONE OF SUCH INFORMATION MAY BE COPIED OR OTHERWISE REPRODUCED, REPACKAGED, FURTHER TRANSMITTED, TRANSFERRED, DISSEMINATED, REDISTRIBUTED OR RESOLD, OR STORED FOR SUBSEQUENT USE FOR ANY SUCH PURPOSE, IN WHOLE OR IN PART, IN ANY FORM OR MANNER OR BY ANY MEANS WHATSOEVER, BY ANY PERSON WITHOUT MOODY'S PRIOR WRITTEN CONSENT. All information contained herein is obtained by MOODY'S from sources believed by it to be accurate and reliable. Because of the possibility of human or mechanical error as well as other factors, however, all information contained herein is provided "AS IS" without warranty of any kind. MOODY'S adopts all necessary measures so that the information it uses in assigning a credit rating is of sufficient quality and from sources Moody's considers to be reliable, including, when appropriate, independent third-party sources. However, MOODY'S is not an auditor and cannot in every instance independently verify or validate information received in the rating process. Under no circumstances shall MOODY'S have any liability to any person or entity for (a) any loss or damage in whole or in part caused by, resulting from, or relating to, any error (negligent or otherwise) or other circumstance or contingency within or outside the control of MOODY'S or any of its directors, officers, employees or agents in connection with the procurement, collection, compilation, analysis, interpretation, communication, publication or delivery of any such information, or (b) any direct, indirect, special, consequential, compensatory or incidental damages whatsoever (including without limitation, lost profits), even if MOODY'S is advised in advance of the possibility of such damages, resulting from the use of or inability to use, any such information. The ratings, financial reporting analysis, projections, and other observations, if any, constituting part of the information contained herein are, and must be construed solely as, statements of opinion and not statements of fact or recommendations to purchase, sell or hold any securities. Each user of the information contained herein must make its own study and evaluation of each security it may consider purchasing, holding or selling. NO WARRANTY, EXPRESS OR IMPLIED, AS TO THE ACCURACY, TIMELINESS, COMPLETENESS, MERCHANTABILITY OR FITNESS FOR ANY PARTICULAR PURPOSE OF ANY SUCH RATING OR OTHER OPINION OR INFORMATION IS GIVEN OR MADE BY MOODY'S IN ANY FORM OR MANNER WHATSOEVER.

MIS, a wholly-owned credit rating agency subsidiary of Moody's Corporation ("MCO"), hereby discloses that most issuers of debt securities (including corporate and municipal bonds, debentures, notes and commercial paper) and preferred stock rated by MIS have, prior to assignment of any rating, agreed to pay to MIS for appraisal and rating services rendered by it fees ranging from \$1,500 to approximately \$2,500,000. MCO and MIS also maintain policies and procedures to address the independence of MIS's ratings and rating processes. Information regarding certain affiliations that may exist between directors of MCO and rated entities, and between entities who hold ratings from MIS and have also publicly reported to the SEC an ownership interest in MCO of more than 5%, is posted annually at [www.moodys.com](http://www.moodys.com) under the heading "Shareholder Relations — Corporate Governance — Director and Shareholder Affiliation Policy."

For Australia only: Any publication into Australia of this document is pursuant to the Australian Financial Services License of MOODY'S affiliate, Moody's Investors Service Pty Limited ABN 61 003 399 657AFSL 336969 and/or Moody's Analytics Australia Pty Ltd ABN 94 105 136 972 AFSL 383569 (as applicable). This document is intended to be provided only to "wholesale clients" within the meaning of section 761G of the Corporations Act 2001. By continuing to access this document from within Australia, you represent to MOODY'S that you are, or are accessing the document as a representative of, a "wholesale client" and that neither you nor the entity you represent will directly or indirectly disseminate this document or its contents to "retail clients" within the meaning of section 761G of the Corporations Act 2001. MOODY'S credit rating is an opinion as to the creditworthiness of a

debt obligation of the issuer, not on the equity securities of the issuer or any form of security that is available to retail clients. It would be dangerous for retail clients to make any investment decision based on MOODY'S credit rating. If in doubt you should contact your financial or other professional adviser.

GATEWAY TECHNICAL COLLEGE DISTRICT BOARD  
Organizational Meeting  
July 8, 2013

The Gateway Technical College District Board met on Monday, July 8, 2013 at the SC Johnson integrated Manufacturing and Engineering Technology Center (iMET), 2320 Renaissance Blvd., Room 104, Sturtevant, Wisconsin 53177. The meeting was called to order at 8:00 am by Ram Bhatia, Chairperson.

**I. Call to Order**

**A. Open Meeting Compliance**

- i. K. Jackson confirmed the meeting was duly noticed in accordance with state statutes for open meeting compliance.

**II. Roll Call**

Ram Bhatia	Present
William Duncan	Present
Gary Olsen	Present
Bethany Ormseth	Present
Scott Pierce	Present
Neville Simpson	Present
Sheila Webber	Excused
Roger Zacharias	Present
Pamela Zenner-Richards	Present

Also in attendance were Bryan Albrecht and Kamaljit Jackson and 4 citizens/reporters.

**III. Oath of Office**

- A. W. Whyte administered the Oath of Office to William Duncan and Bethany Ormseth. Signed and notarized copies of these Oaths of Office are on file in the District Office.

**IV. Citizen Comments**

- A. No Citizen Comments submitted

**V. Election of Officers**

- A. W. Whyte presided over the election of officers:

- i. Chairperson – S. Pierce nominated R. Bhatia for the Office of Chairperson; P. Zenner-Richards seconded the nomination. Call for nominations called three times. There being no other nominations, it was moved by S. Pierce, seconded by N. Simpson and carried that nominations be closed and a unanimous ballot be cast for R. Bhatia as Chairperson
- ii. Vice Chairperson – R. Zacharias nominated G. Olsen for the Office of Vice Chairperson; S. Pierce seconded the nomination. Call for nominations called three times. There being no other nominations, it was moved by N. Simpson, seconded by P. Zenner-Richards and carried that nominations be closed and a unanimous ballot be cast for G. Olsen as Vice Chairperson
- iii. Secretary – S. Pierce nominated P. Zenner-Richards for the Office of Secretary; G. Olsen seconded the nomination. Call for nominations called three times. There being no other nominations, it was moved N. Simpson, seconded by S. Pierce and carried that nominations be closed and a unanimous ballot be cast for P. Zenner-Richards as Secretary



- iv. Treasurer – R. Zacharias nominated N. Simpson for the Office of Treasurer; P. Zenner-Richards seconded the nomination. Call for nominations called three times. There being no other nominations, it was moved by S. Pierce, seconded by G. Olsen and carried that nominations be closed and a unanimous ballot be cast for N. Simpson as Treasurer

**VI. Approval of Bid**

- A. Bid No. 1415 – Boiler Plant Upgrade, Racine Campus
  - i. The College solicited for and received sealed bids from two (2) contractors for the Racine Campus Boiler Plant Upgrade. The contractor will provide all labor and materials for the Boiler Plant Upgrade. Administration is recommending the base bid package with the two alternate bids contract including all labor and materials required for this project be awarded to: Lee Heating and Cooling, Inc., Kenosha, WI for a Contract Value of \$652,170; Architect and Engineering Fees of \$57,064; Reimbursable Costs of \$500; for a grand total of \$709,734

After discussion, it was moved by P. Zenner Richards and seconded by G. Olsen and carried to approve Bid No. 1415 – Boiler Plant Upgrade, Racine Campus

**VII. Appointment of Board Representatives**

- A. R. Bhatia made the following appointments for 2013-2014:

<b>Wisconsin Technical College District Boards Association</b>	
<b>Position/Committee</b>	<b>2013-2014 Representative</b>
Board of Directors – Two Year Term	Ram Bhatia
Legislative Committee	Gary Olsen Roger Zacharias
Program Committee	William Duncan
Marketing, Public Relations and Awards	Pam Zenner-Richards
Human Resources Committee	Bethany Ormseth
Bylaws, Policies and Procedures	Ram Bhatia Neville Simpson
Interdistrict/Interagency	Gary Olsen Scott Pierce
Association of Community College Trustees	Gary Olsen
Gateway Foundation Board	Ram Bhatia

**VIII. Establish Dates, Times and Locations for Board Meetings**

- A. It was moved by S. Pierce and seconded by R. Zacharias to approve the following board calendar with the regular meetings beginning at 8:00 am. The Public Hearing on the budget will begin at 7:00 pm. Locations for each meeting will be scheduled throughout the District at a different campus each month

August 15, 2013	February 20, 2014
September 19, 2013	March 20, 2014
October 24, 2013	April 17, 2014

November 21, 2013	May 5, 2014 (Budget Public Hearing)
December 12, 2013	May 15, 2014
January 16, 2014	June 19, 2014
	July 14, 2014 (Organizational)

**IX. Next Meeting Date and Adjourn**

- A. Regular Board Meeting – Thursday, August 15, 2013, 8:00 am, Kenosha
- B. At approximately 8:21 a.m. it was moved by R. Zacharias, seconded by G. Olsen and carried that the meeting adjourn.
- C. Following the organizational meeting, Gateway Board members met for their retreat

Submitted by,

Pamela Zenner-Richards  
Secretary

## VI. CITIZEN COMMENTS

- A. The Gateway Technical College District Board has established a limit of thirty minutes for citizen comments. Individuals will be limited to three to five minutes for their comments depending on the number of individuals who wish to address the Board. Citizens wishing to address the Board are to sign up prior to the meeting on the forms provided at the entrance to the meeting room.

- VII. Chairperson's Report
  - A. Follow-up on District Board Committee Appointments
  - B. President's 2013-2014 Goals
  - C. Meeting Evaluation
  - D. Board 4<sup>th</sup> Quarter Goals
  - E. District Board Association Meeting

**GATEWAY TECHNICAL COLLEGE DISTRICT BOARD**

Roll Call \_\_\_\_\_  
Action \_\_\_\_\_  
Information   X    
Discussion \_\_\_\_\_

**CHAIRPERSON'S REPORT**  
**Follow-up on District Board Committee Appointments**

Governance Process:  
Board Liaison:

Policy 1.2 – Governing Philosophy  
Ram Bhatia

# GATEWAY TECHNICAL COLLEGE DISTRICT BOARD

Roll Call \_\_\_\_\_  
Action \_\_\_\_\_  
Information   X    
Discussion \_\_\_\_\_

## **CHAIRPERSON'S REPORT President's 2013-2014 Goals**

Governance Process:  
Board Liaison:

Policy 1.2 – Governing Philosophy  
Ram Bhatia

# GATEWAY TECHNICAL COLLEGE DISTRICT BOARD

Roll Call \_\_\_\_\_  
Action \_\_\_\_\_  
Information   X    
Discussion \_\_\_\_\_

## CHAIRPERSON'S REPORT Meeting Evaluation

Governance Process:  
Board Liaison:

Policy 1.2 – Governing Philosophy  
Ram Bhatia

# GATEWAY TECHNICAL COLLEGE DISTRICT BOARD

Roll Call \_\_\_\_\_  
Action \_\_\_\_\_  
Information   X    
Discussion \_\_\_\_\_

## CHAIRPERSON'S REPORT Board 4<sup>th</sup> Quarter Goals

Governance Process:  
Board Liaison:

Policy 1.2 – Governing Philosophy  
Ram Bhatia



# GATEWAY TECHNICAL COLLEGE DISTRICT BOARD

Roll Call \_\_\_\_\_  
Action \_\_\_\_\_  
Information   X    
Discussion \_\_\_\_\_

## CHAIRPERSON'S REPORT District Board Association Meeting

Governance Process:  
Board Liaison:

Policy 1.2 – Governing Philosophy  
Ram Bhatia

- VIII. President's Report
  - A. Facility Update (W. Whyte)
  - B. Sustainability Dashboard (S. Sklba)
  - C. Enrollment Strategies (Z. Haywood)

# GATEWAY TECHNICAL COLLEGE DISTRICT BOARD

Roll Call \_\_\_\_\_  
Action \_\_\_\_\_  
Information   X    
Discussion \_\_\_\_\_

## PRESIDENT'S REPORT Facility Update

Policy/Ends Statement:      Policy 2.1

# GATEWAY TECHNICAL COLLEGE DISTRICT BOARD

Roll Call \_\_\_\_\_  
Action \_\_\_\_\_  
Information   X    
Discussion \_\_\_\_\_

## **PRESIDENT'S REPORT Sustainability Dashboard**

Policy/Ends Statement:      Policy 2.1

# GATEWAY TECHNICAL COLLEGE DISTRICT BOARD

Roll Call \_\_\_\_\_  
Action \_\_\_\_\_  
Information   X    
Discussion \_\_\_\_\_

## **PRESIDENT'S REPORT Enrollment Strategies**

Policy/Ends Statement:      Policy 2.1

IX. ' OPERATIONAL AGENDA

A. Action Agenda

1. Resolution No. B-2013 C.1 and C.2 Demonstration Kitchen Classroom Remodel Lake Building, Racine Campus

# GATEWAY TECHNICAL COLLEGE DISTRICT BOARD

Roll Call \_\_\_\_\_  
Action   X    
Information \_\_\_\_\_  
Discussion \_\_\_\_\_

## RESOLUTIONS B-2013 C.1 & C.2 DEMONSTRATION KITCHEN CLASSROOM REMODEL LAKE BUILDING, RACINE CAMPUS

**Summary of Item:** Gateway Technical College is proposing to remodel 1,156 sq. ft. of the Racine Campus into the culinary arts program Demonstration Kitchen Classroom. The proposed remodel will accommodate the growth in the number and the type of classes that the culinary arts program teaches each semester. The remodeled space will allow the instructors to creatively demonstrate techniques and methods in a high tech environment.

The estimated cost to remodel the south end of the former bookstore space into the Demonstration Kitchen Classroom is \$300,000

**Attachments:** Resolutions No. B-2013 C.1 & C.2  
Floor Plan of Demonstration Kitchen Classroom

**Staff Liaison:** William R. Whyte

TopResoB2013C.1&C.2.....08/15/13

# Gateway Technical College

## RESOLUTION NO. B-2013 C.1

**WHEREAS**, Gateway Technical College is proposing to remodel 1,156 sq. ft. of the Racine Campus into the culinary arts program Demonstration Kitchen Classroom, and;

**WHEREAS**, the proposed remodel will accommodate the growth in the number and the type of classes that the culinary arts program teaches each semester, and the remodeled space will allow the instructors to creatively demonstrate techniques and methods in a high tech environment;

**WHEREAS**, the Gateway Technical College District Board has determined the estimated cost to remodel the south end of the former bookstore space into the Demonstration Kitchen Classroom, Lake Building, Racine Campus is \$300,000;

**NOW, THEREFORE, BE IT RESOLVED**, that the Gateway Technical College Board, pursuant to s38.04(10), Wis. Stats., and Chapter TCS 5, of the Wisconsin Administrative Code, approves the remodeling of the south end of the former bookstore space into the Demonstration Kitchen Classroom, Lake Building, Racine Campus.

---

Ram Bhatia  
Chairperson

---

Pamela Zenner-Richards  
Secretary

---

August 15, 2013  
Date



# Gateway Technical College

## RESOLUTION NO. B-2013 C.2

**WHEREAS**, pursuant to s38.04(10), Wis. Stats, and Chapter TCS 5, of the Wisconsin Administrative Code, the Gateway Technical College District Board has approved the remodeling of the south end of the former bookstore space into the Demonstration Kitchen Classroom, Lake Building, Racine Campus for an estimated cost of \$300,000;

**NOW, THEREFORE, BE IT RESOLVED**, that , pursuant to s38.04(10), Wis. Stats, and Chapter TCS 5, of the Wisconsin Administrative Code, the Gateway Technical College District Board requests the Wisconsin Technical College System Board approve the Demonstration Kitchen Classroom remodel, Lake Building, Racine Campus

---

Ram Bhatia  
Chairperson

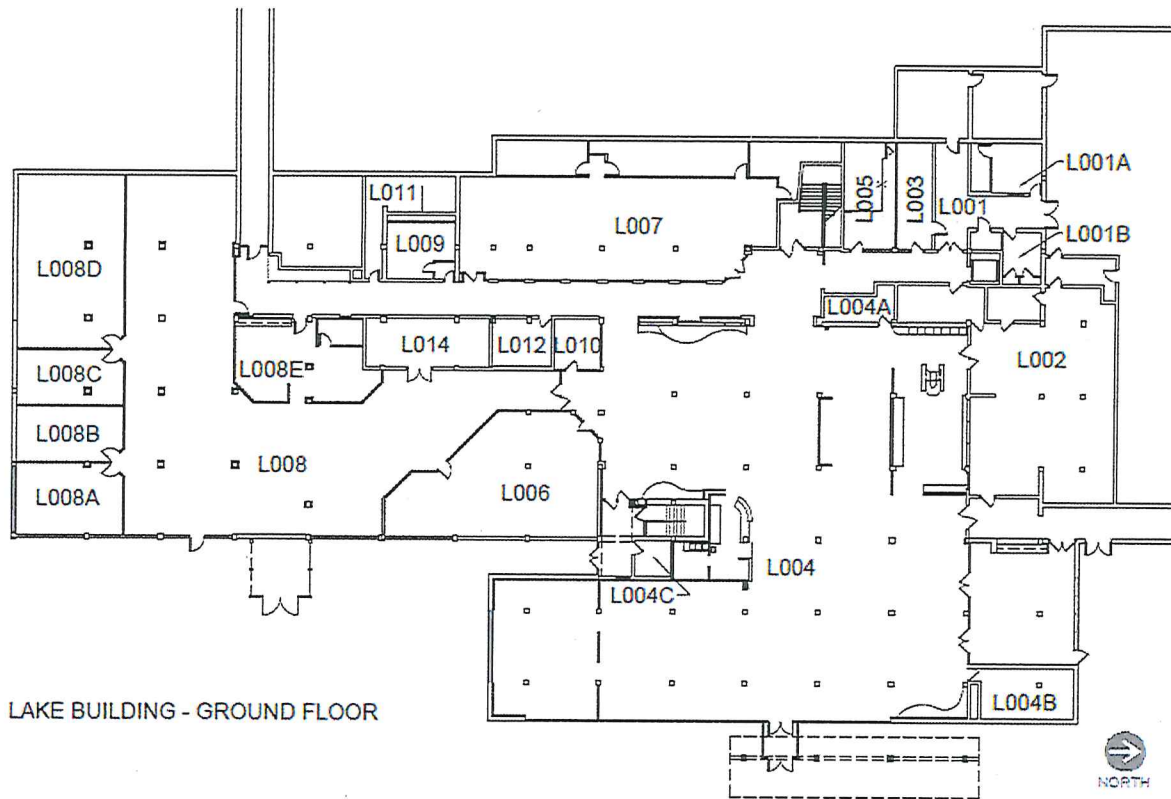
---

Pamela Zenner-Richards  
Secretary

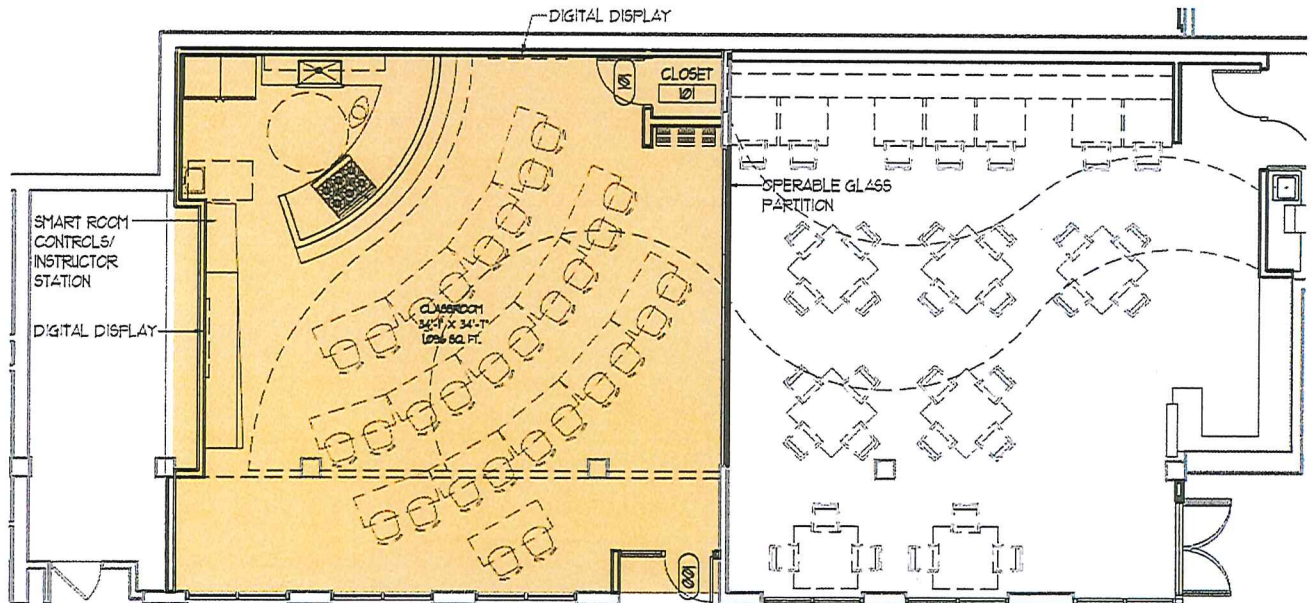
---

August 15, 2013  
Date

The Racine Campus Lake Bldg. lower level existing floor plan is below. The demonstration kitchen classroom will occupy the southern portion of room L007.



The floor plan of the proposed demonstration kitchen classroom is highlighted below.



IX. OPERATIONAL AGENDA

B. Consent Agenda

1. Finance
  - a) Financial Statement and Expenditures over \$2,500
  - b) Cash and Investment Schedules
2. Personnel Report
3. Grant Awards
4. Contracts for Instructional Delivery
5. Advisory Committee Activity Report

# GATEWAY TECHNICAL COLLEGE DISTRICT BOARD

Roll Call  
Action X  
Information  
Discussion

## FINANCIAL STATEMENT AND EXPENDITURES OVER \$2,500

**Summary of Item:** Summary of revenue and expenditures as of **7/31/13**

Ends Statements and/or Executive Limitations  
Section 3 - Executive Limitations  
Policy 3.5 Financial Condition

**Staff Liaison:** **Bane Thomey**

08/05/13

**GATEWAY TECHNICAL COLLEGE  
2013-14 SUMMARY OF REVENUE & EXPENDITURES AS OF 7/31/13**

<u>COMBINED FUNDS</u>	2013-14 APPROVED BUDGET	2013-14 WORKING BUDGET	2013-14 ACTUAL TO DATE	PERCENT INCURRED
<b>REVENUE:</b>				
LOCAL GOVERNMENT	\$ 60,043,000	\$ 60,043,000	\$ -	0.00%
STATE AIDS	8,811,000	8,811,000	808,341	9.17%
STATUTORY PROGRAM FEES	17,923,000	17,923,000	8,073,944	45.05%
MATERIAL FEES	841,000	841,000	383,919	45.65%
OTHER STUDENT FEES	2,995,000	2,995,000	1,099,120	36.70%
INSTITUTIONAL	10,266,000	10,266,000	620,364	6.04%
FEDERAL	45,921,000	45,921,000	5,065,023	11.03%
OTHER RESOURCES	<u>13,000,000</u>	<u>13,000,000</u>	<u>6,750,000</u>	51.92%
<b>TOTAL REVENUE &amp; OTHER RESOURCES</b>	<u><u>\$ 159,800,000</u></u>	<u><u>\$ 159,800,000</u></u>	<u><u>\$ 22,800,711</u></u>	14.27%
 <b>EXPENDITURES BY FUNCTION:</b>				
INSTRUCTIONAL	\$ 60,611,000	\$ 60,611,000	\$ 3,623,681	5.98%
INSTRUCTIONAL RESOURCES	1,249,000	1,249,000	86,518	6.93%
STUDENT SERVICES	61,612,000	61,612,000	5,907,735	9.59%
GENERAL INSTITUTIONAL	10,722,000	10,722,000	1,811,186	16.89%
PHYSICAL PLANT	25,479,000	25,479,000	1,481,498	5.81%
AUXILIARY SERVICES	600,000	600,000	6,823	1.14%
PUBLIC SERVICES	<u>345,000</u>	<u>345,000</u>	<u>36,674</u>	10.63%
<b>TOTAL EXPENDITURES</b>	<u><u>\$ 160,618,000</u></u>	<u><u>\$ 160,618,000</u></u>	<u><u>\$ 12,954,115</u></u>	8.07%
 <b>EXPENDITURES BY FUNDS:</b>				
GENERAL	\$78,259,000	\$78,259,000	\$5,800,229	7.41%
SPECIAL REVENUE - OPERATIONAL	8,405,000	8,405,000	453,655	5.40%
SPECIAL REVENUE - NON AIDABLE	50,354,000	50,354,000	5,258,854	10.44%
CAPITAL PROJECTS	14,000,000	14,000,000	1,434,554	10.25%
DEBT SERVICE	9,000,000	9,000,000	0	0.00%
ENTERPRISE	<u>600,000</u>	<u>600,000</u>	<u>6,823</u>	1.14%
<b>TOTAL EXPENDITURES</b>	<u><u>\$ 160,618,000</u></u>	<u><u>\$ 160,618,000</u></u>	<u><u>\$ 12,954,115</u></u>	8.07%

08/05/13

**GATEWAY TECHNICAL COLLEGE  
2013-14 SUMMARY OF REVENUE & EXPENDITURES AS OF 7/31/13**

<u>GENERAL FUND</u>	<b>2013-14 APPROVED BUDGET</b>	<b>2013-14 WORKING BUDGET</b>	<b>2013-14 ACTUAL TO DATE</b>	<b>PERCENT INCURRED</b>
<b>REVENUE:</b>				
LOCAL GOVERNMENT	\$ 48,830,000	\$ 48,830,000	\$ -	0.00%
STATE AIDS	5,265,000	5,265,000	808,341	15.35%
STATUTORY PROGRAM FEES	17,923,000	17,923,000	8,073,944	45.05%
MATERIAL FEES	841,000	841,000	383,919	45.65%
OTHER STUDENT FEES	1,855,000	1,855,000	667,810	36.00%
INSTITUTIONAL	3,515,000	3,515,000	18,075	0.51%
FEDERAL REVENUE	30,000	30,000	-	
OTHER RESOURCES			-	
	<u>\$ 78,259,000</u>	<u>\$ 78,259,000</u>	<u>\$ 9,952,089</u>	12.72%
 <b>EXPENDITURES BY FUNCTION:</b>				
INSTRUCTIONAL	\$ 51,223,000	\$ 51,223,000	\$ 3,156,096	6.16%
INSTRUCTIONAL RESOURCES	1,194,000	1,194,000	74,918	6.27%
STUDENT SERVICES	10,162,000	10,162,000	576,055	5.67%
GENERAL INSTITUTIONAL	7,951,000	7,951,000	1,614,151	20.30%
PHYSICAL PLANT	<u>7,729,000</u>	<u>7,729,000</u>	<u>379,009</u>	4.90%
	<u>\$ 78,259,000</u>	<u>\$ 78,259,000</u>	<u>\$ 5,800,229</u>	7.41%

08/05/13

**GATEWAY TECHNICAL COLLEGE  
2013-14 SUMMARY OF REVENUE & EXPENDITURES AS OF 7/31/13**

<u>SPECIAL REVENUE -OPERATIONAL FUND</u>	<b>2013-14 APPROVED BUDGET</b>	<b>2013-14 WORKING BUDGET</b>	<b>2013-14 ACTUAL TO DATE</b>	<b>PERCENT INCURRED</b>
REVENUE:				
LOCAL GOVERNMENT	\$ 2,286,000	\$ 2,286,000	\$ -	0.00%
STATE AIDS	913,000	913,000	-	0.00%
INSTITUTIONAL	517,000	517,000	373,996	72.34%
FEDERAL	<u>4,689,000</u>	<u>4,689,000</u>	<u>-</u>	0.00%
	<u>\$ 8,405,000</u>	<u>\$ 8,405,000</u>	<u>\$ 373,996</u>	4.45%
EXPENDITURES BY FUNCTION:				
INSTRUCTIONAL	\$ 5,938,000	\$ 5,938,000	\$ 276,175	4.65%
STUDENT SERVICES	1,600,000	1,600,000	114,923	7.18%
GENERAL INSTITUTIONAL	532,000	532,000	25,883	4.87%
PUBLIC SERVICES	<u>335,000</u>	<u>335,000</u>	<u>36,674</u>	10.95%
	<u>\$ 8,405,000</u>	<u>\$ 8,405,000</u>	<u>\$ 453,655</u>	5.40%

08/05/13

**GATEWAY TECHNICAL COLLEGE  
2013-14 SUMMARY OF REVENUE & EXPENDITURES AS OF 7/31/13**

<u>SPECIAL REVENUE-NON AIDABLE FUND</u>	<b>2013-14 APPROVED BUDGET</b>	<b>2013-14 WORKING BUDGET</b>	<b>2013-14 ACTUAL TO DATE</b>	<b>PERCENT INCURRED</b>
REVENUE:				
STATE AIDS	\$ 2,563,000	\$ 2,563,000	\$ -	0.00%
OTHER STUDENT FEES	925,000	925,000	423,218	45.75%
INSTITUTIONAL	5,669,000	5,669,000	15,050	0.27%
FEDERAL	<u>41,197,000</u>	<u>41,197,000</u>	<u>5,063,355</u>	12.29%
	<u>\$ 50,354,000</u>	<u>\$ 50,354,000</u>	<u>\$ 5,501,623</u>	10.93%
EXPENDITURES BY FUNCTION:				
STUDENT SERVICES	\$ 49,590,000	\$ 49,590,000	\$ 5,164,554	10.41%
GENERAL INSTITUTIONAL	<u>764,000</u>	<u>764,000</u>	<u>94,300</u>	12.34%
	<u>\$ 50,354,000</u>	<u>\$ 50,354,000</u>	<u>\$ 5,258,854</u>	10.44%



08/05/13

**GATEWAY TECHNICAL COLLEGE  
2013-14 SUMMARY OF REVENUE & EXPENDITURES AS OF 7/31/13**

<u><b>CAPITAL PROJECTS FUND</b></u>	<b>2013-14 APPROVED BUDGET</b>	<b>2013-14 WORKING BUDGET</b>	<b>2013-14 ACTUAL TO DATE</b>	<b>PERCENT INCURRED</b>
REVENUE:				
LOCAL GOVERNMENT	\$ -	\$ -	\$ -	
STATE AIDS	70,000	70,000	-	0.00%
INSTITUTIONAL	75,000	75,000	-	0.00%
FEDERAL	5,000	5,000	1,668	33.36%
OTHER RESOURCES	13,000,000	13,000,000	6,750,000	51.92%
	<u>\$ 13,150,000</u>	<u>\$ 13,150,000</u>	<u>\$ 6,751,668</u>	51.34%
EXPENDITURES BY FUNCTION:				
INSTRUCTIONAL	\$ 3,450,000	\$ 3,450,000	\$ 191,410	5.55%
INSTRUCTIONAL - RESOURCES	55,000	55,000	11,600	21.09%
STUDENT SERVICES	260,000	260,000	52,203	20.08%
GENERAL INSTITUTIONAL	1,475,000	1,475,000	76,852	5.21%
PHYSICAL PLANT	8,750,000	8,750,000	1,102,489	12.60%
PUBLIC SERVICE	10,000	10,000	-	0.00%
	<u>\$ 14,000,000</u>	<u>\$ 14,000,000</u>	<u>\$ 1,434,554</u>	10.25%

08/05/13

**GATEWAY TECHNICAL COLLEGE  
2013-14 SUMMARY OF REVENUE & EXPENDITURES AS OF 7/31/13**

<b><u>DEBT SERVICE FUND</u></b>	<b>2013-14 APPROVED BUDGET</b>	<b>2013-14 WORKING BUDGET</b>	<b>2013-14 ACTUAL TO DATE</b>	<b>PERCENT INCURRED</b>
REVENUE:				
LOCAL GOVERNMENT	\$ 8,882,000	\$ 8,882,000	\$ -	0.00%
INSTITUTIONAL	\$ 150,000	\$ 150,000	\$ 140,556	93.70%
	<hr/>	<hr/>	<hr/>	
	<b><u>\$ 9,032,000</u></b>	<b><u>\$ 9,032,000</u></b>	<b><u>\$ 140,556</u></b>	<b>1.56%</b>
EXPENDITURES BY FUNCTION:				
PHYSICAL PLANT	\$ 9,000,000	\$ 9,000,000	\$ -	0.00%
	<hr/>	<hr/>	<hr/>	
	<b><u>\$ 9,000,000</u></b>	<b><u>\$ 9,000,000</u></b>	<b><u>\$ -</u></b>	<b>0.00%</b>

08/05/13

**GATEWAY TECHNICAL COLLEGE  
2013-14 SUMMARY OF REVENUE & EXPENDITURES AS OF 7/31/13**

<b><u>ENTERPRISE FUND</u></b>	<b>2013-14 APPROVED BUDGET</b>	<b>2013-14 WORKING BUDGET</b>	<b>2013-14 ACTUAL TO DATE</b>	<b>PERCENT INCURRED</b>
REVENUE:				
LOCAL GOVERNMENT	\$ 45,000	\$ 45,000	\$ -	0.00%
OTHER STUDENT FEES	260,000	260,000	8,092	3.11%
INSTITUTIONAL	295,000	295,000	72,687	24.64%
FEDERAL	-	-	-	
	<u>\$ 600,000</u>	<u>\$ 600,000</u>	<u>\$ 80,779</u>	13.46%
EXPENDITURES BY FUNCTION:				
AUXILIARY SERVICES	<u>\$ 600,000</u>	<u>\$ 600,000</u>	<u>\$ 6,823</u>	1.14%
	<u>\$ 600,000</u>	<u>\$ 600,000</u>	<u>\$ 6,823</u>	1.14%

# GATEWAY TECHNICAL COLLEGE DISTRICT BOARD

Roll Call  
Action X  
Information  
Discussion

## CASH AND INVESTMENT SCHEDULES

**Summary of Item:** Monthly cash and investment schedules

Ends Statements and/or Executive Limitations:  
Section 3 - Executive Limitations  
Policy 3.5 Financial Condition

**Staff Liaison:** Bane Thomey

**GATEWAY TECHNICAL COLLEGE**  
**MONTHLY CASH RECONCILIATION**  
**FOR THE MONTH ENDING JUNE 30, 2013**

**Cash Balance May 31, 2013** \$ 25,515,940.27

**PLUS:**

Cash Receipts 6,320,761.41

**\$ 31,836,701.68**

**LESS:**

Disbursement:

Payroll 3,708,212.42

Accounts Payable 7,851,304.60

11,559,517.02

**Cash Balance June 30, 2013** **\$ 20,277,184.66**

**DISPOSITION OF FUNDS**

Cash in Bank \$ 1,173,112.70

Cash In Transit 30,636.29

Investments 19,069,385.67

Cash-on-hand 4,050.00

**TOTAL: June 30, 2013** **\$ 20,277,184.66**

GATEWAY TECHNICAL COLLEGE  
MONTHLY INVESTMENT REPORT

JULY 2012 - JUNE 2013

	Investments At Beginning Of Month	Investments At End Of Month	Change In Investments For Month	Investments Income For Month	YTD Investments Income	Average Monthly Rate of Investment Income
July-12	\$ 13,580,666	\$ 18,282,800	\$ 4,702,134	\$ 2,134	\$ 2,134	0.15
AUGUST	18,282,800	30,835,586	12,552,786	2,786	4,920	0.15
SEPTEMBER	30,835,586	26,839,240	(3,996,346)	3,654	8,574	0.16
OCTOBER	26,839,240	24,642,645	(2,196,595)	3,406	11,980	0.16
NOVEMBER	24,642,645	17,545,283	(7,097,362)	2,638	14,618	0.16
DECEMBER	17,545,283	13,397,491	(4,147,792)	2,208	16,826	0.16
January-13	13,397,491	30,700,138	17,302,647	2,647	19,473	0.15
FEBRUARY	30,700,138	47,404,121	16,703,983	3,983	23,456	0.15
MARCH	16,703,983	40,809,678	24,105,695	5,557	29,013	0.15
APRIL	40,809,678	30,513,542	(10,296,136)	3,864	32,877	0.15
MAY	30,513,542	25,316,837	(5,196,705)	3,325	36,202	0.14
JUNE	25,316,837	19,069,386	(6,247,451)	2,549	38,751	0.14

## INVESTMENT SCHEDULE

June 30, 2013

<u>NAME OF BANK/INST</u>	<u>DATE INVESTED</u>	<u>DATE OF MATURITY</u>	<u>AMOUNT</u>	<u>INTEREST RATE</u>	<u>PRESENT STATUS</u>
LOCAL GOV'T POOL	Various	Open	\$ 3,760,276	0.08	OPEN
WELLS FARGO	Various	Open	<u>\$ 15,309,110</u>	0.15	OPEN
		TOTAL	<u>\$ 19,069,386</u>		

**GATEWAY TECHNICAL COLLEGE DISTRICT BOARD**

Roll Call \_\_\_\_\_  
Action   X    
Information \_\_\_\_\_  
Discussion \_\_\_\_\_

**PERSONNEL REPORT**

**Summary of Item: Monthly Personnel Activity Report**

**New Hires  
Promotions  
Retirements  
Resignations  
Terminations  
Employment Approvals: Casual, Non-Instructional**

**Ends Statements and/or Executive Limitations:  
Section 3: Executive Limitations  
Policy 3.3 - Compensation & Benefits**

**Staff Liaison: William Whyte**

08/15/13



**PERSONNEL REPORT**  
**July - August 2013**

**NEW HIRES:**

Robert A. Abegglen, Disability Support Specialist, Student Development; Kenosha/Racine; Annual Salary: \$54,246; effective August 12, 2013

Andrea Delgado, District Financial Aid Associate, Financial Aid; Kenosha; Annual Salary: \$40,913.60; effective July 15, 2013

Kimberly A. Dunisch, HPOP Outreach Specialist, Health Occupations; Racine; Annual Salary: \$54,246; this is a limited term position; effective June 17, 2013

Thomas P. Filipiak, Jr., Instructor Mechanical Design, MET; S.C. Johnson iMET; Annual Salary: \$68,500; effective August 26, 2013

Morgan A. Kaiser, Nursing Skills Lab Assistant, Health Occupations; Kenosha; Annual Salary: \$57,500; effective July 8, 2013

Wayne A. Korte, Mechanic, Facilities; Racine, Annual Salary: \$49,025.60; effective July 29, 2013

Alyssa M. Luedtke, Student Express Associate, Student Success; Kenosha; Annual Salary: \$38,646.40; effective August 12, 2013

Amanda A. Pulda, Instructor Learning Success Center, Developmental Education; Racine, Annual Salary: \$60,500; effective June 17, 2013

Gina M. Zainelli, Instructor Anatomy and Physiology, Biology, and Microbiology, General Studies; Racine; Annual Salary: \$70,000; effective August 26, 2013

**PROMOTIONS:**

Therese Fellner, Executive Director Strategic Initiatives, WEDD; District-Wide; Annual Salary: \$91,700; previously Director, Business Development; effective July 1, 2013

Cyndean Jennings, Dean Developmental Education, Developmental Education; District-Wide; Annual Salary: \$100,000; previously Associate Dean Academic Operations; effective August 1, 2013

Ann Witte, Student Services Success Manager, Student Success; Burlington/Elkhorn; Annual Salary: \$84,000; previously Student Support Counselor; effective August 12, 2013

**RETIREMENTS:**

Edward Knudson, Executive Director of Workforce & Economic Development; WEDD, Kenosha; effective July 8, 2013

Debra Rush, Admissions Associate, Admissions and Testing; Elkhorn, effective June 28, 2013

**RESIGNATIONS:**

Craig Maeschen, Instructor CNC/Machine Tool, WEDD; Racine, effective June 28, 2013

Sarah Nielsen, Student Development Associate, Student Development; Elkhorn; effective August 15, 2013

**TERMINATIONS:**

Catherine Easton, District Receptionist, Campus Affairs; Kenosha; Due to Job Elimination; effective June 28, 2013

Jacquelynne Pierson, , District Receptionist, Campus Affairs; Kenosha; Due to Job Elimination; effective June 28, 2013

**EMPLOYMENT APPROVALS: CASUALS, NON-INSTRUCTIONAL**

Name	Assignment	Supervisor
Oquendo, Jessica	Casual	Herring, J.
Gomez, Rolando	Federal Work Study	Howard, L.
Duckworth, Tanner	Casual	Madsen, D.
Mueller, Joseph	Casual	O'Connell, B.
Mosley, Willie	Casual	O'Donnell, M.
Northup, Kathryn	Casual	Roberts, S.
Calderon, Christian	Casual	Summers, T.
Charleston, Michael		
Glass, Patricia		
Andraschko, Richard	Federal Work Study	Thielen, J.
Jackson, Antwan		
Conway, Stephanie	Casual	Tutlewski, C.

# GATEWAY TECHNICAL COLLEGE DISTRICT BOARD

Roll Call \_\_\_\_\_  
Action \_\_\_\_\_X  
Information \_\_\_\_\_  
Discussion \_\_\_\_\_

## GRANT AWARDS

**Summary of Item:** The college has been informed of twenty-two new grant awards from the Wisconsin Technical College System. Six are Workforce Advancement Training (WAT) grants that will provide training to incumbent workers at area companies. The remainder are federal and state grants that support adult basic education/English Language Learning, healthcare education, faculty development, career preparation for high school students, and support services for special student populations.

**Attachments:** Grant Awards – August 2014

**College Strategic Directions  
and/or Executive Limitations:** Wisconsin Statutes 38.14(4)  
Section 3 - Executive Limitations  
Policy 3.5 - Financial Condition  
College Strategic Direction #5

**Staff Liaison:** Anne Whynott



## AUGUST 2013 GRANT AWARDS

Project Number	Project Title	Activities	Time Frame	Number Served	Funding Source	Project Costs	Federal/State Other Fund	Match Funds
009	Basic Skills Program	Provide instructional services at the Kenosha County Job Center, Racine County Workforce Development Center, the Martin Luther King, Jr. Community Center in Racine, and the Family Literacy Center in Racine.	07/01/13 to 06/30/14	675	WTCS/ IGP (Basic Skills)	\$ 322,798	\$259,498 80.4%	\$ 63,300 19.6% Local
021	Bridge Program to CNC	Provide a pilot bridge program to prepare adult basic education students and English language learners to access and succeed in an advanced manufacturing career pathway.	07/01/13 to 06/30/14	15	WTCS/ IGP (Adult Literacy)	\$ 43,401	\$32,551 75%	\$ 10,850 25% Local
054	Minority Participation & Retention	Provide a range of activities to support the transition, enrollment, retention and graduation of minorities at Gateway Technical College. Participants will benefit from services including case management, academic support services, and a monthly workshop series that addresses a variety of topics such as test taking, financial management, resume writing, and career development.	07/01/13 to 06/30/14	225	WTCS/ GPR - MP/RG	\$ 41,524	\$31,143 75%	\$ 10,381 25% Local
096	Displaced Homemaker Project	Provide Displaced Homemakers with services to help them secure gainful employment and obtain skills through training.	07/01/13 to 06/30/14	55	WTCS/ DH	\$ 61,814	\$55,633 90%	\$ 6,181 10% Local

KEY:

WTCS/IGP:

WTCS/IGP:

WTCS/GPR/MP/RG:

WTCS/GPR-DH:

Incentive Grant Program (Basic Skills) through Wisconsin Technical College System.

Incentive Grant Program (Adult Literacy) through Wisconsin Technical College System.

Minority Participation & Retention Grants through Wisconsin Technical College System.

General Purpose Revenue-Displaced Homemaker through Wisconsin Technical College System.



## AUGUST 2013 GRANT AWARDS

Project Number	Project Title	Activities	Time Frame	Number Served	Funding Source	Project Costs	Federal/State Other Fund	Match Funds
016	Adult Basic Ed-Comprehensive	Provide Adult Basic Education and English language instruction at eight sites within the three county district and community sites.	07/01/13 to 06/30/14	1,650	WTCS/ AEFLA	\$ 1,031,939	\$454,439 44%	\$ 577,500 56% Local
017	EL/Civics	Provide ELL students with integrated English Literacy and civics instruction that is supplemented with experiential learning activities.	07/01/13 to 06/30/14	75	WTCS/ AEFLA	\$ 7,640	\$7,640 100%	\$0
114	Transition Services	Provide transition services for disabled students entering programs/courses at Gateway.	07/01/13 to 06/30/14	175	WTCS/ GPR - TSG	\$31,517	\$23,638 75%	\$7,879 25% Local
118/119	Faculty Development	Continue operation of the Faculty Innovating with Technology project to assist faculty with the use of instructional technologies on a one-to-one basis as well as through training seminars and workshops.	07/01/13 to 06/30/14	200	WTCS/ FDG (Faculty Development Grant)	\$104,400	\$52,200 100%	\$52,200 100% Local

KEY:  
 WTCS/AEFLA: Adult Education and Family Literacy Act (AEFLA) through Wisconsin Technical College System.  
 WTCS/TSG: Transition Services Grant through Wisconsin Technical College System.  
 WTCS/FDG: Faculty Development Grants through Wisconsin Technical College System.



## AUGUST 2013 GRANT AWARDS

Project Number	Title	Activities	Time Frame	Number Served	Funding Source	Project Costs	Federal/State Other Fund	Match Funds
070	Perioperative Nursing Advanced Technical Cert.	Develop a Perioperative Nursing Advanced Technical Certificate to fill the gap between generic nursing and perioperative nursing. Develop new curriculum for four ATC courses covering the knowledge and skills necessary to work in the perioperative environment.	07/01/13 to 06/30/14	12-24	WTCS/ GPR - NEO	\$ 13,134	\$9,850 75%	\$ 3,284 25% Local
071	Medical Assistant Retention Program	Provide case management and retention services along with PEER Assisted Study Sessions (PASS) in 2 courses in the Medical Assistant program.	07/01/13 to 06/30/14	50	WTCS/ GPR - HCE	\$59,031	\$59,031 100%	\$ - 0% Local
072	Physical Therapist Assistant Retention Program	Increase student academic success through a summer bridge program, Peer Assisted Study Sessions (PASS) and case management/ support services provided by a retention coach.	07/01/13 to 06/30/14	30	WTCS/ GPR - HCE	\$56,051	\$56,051 75%	\$ - 0% Local
073	Human Patient Simulators	Upgrade/replace equipment used by Associate Degree Nursing students at the College's Kenosha Campus and Burlington Center.	07/01/13 to 06/30/14	N/A	WTCS/ GPR - HCE AIT	\$89,180	\$53,508 60%	\$35,672 40% Local

**KEY:**

WTCS/NEO:

WTCS/HCE:

WTCS/HCE-AIT:

New & Expanding Occupations through Wisconsin Technical College System.

Health Care Education through Wisconsin Technical College System.

Health Care Education-Advanced Instructional Technology through Wisconsin Technical College System.



## AUGUST 2013 GRANT AWARDS

Project Number	Title	Activities	Time Frame	Number Served	Funding Source	Project Costs	Federal/State		Match Funds
							Other Fund	Fund	
080	Strengthening Programs	Provide direct student services and academic support strategies to address technical course completion and graduation rates in three of Gateway's largest programs: Business Management, Nursing, Human Services Associate. This is the first year in Strengthening CTE grant for these programs.	07/01/13 to 06/30/14	225	WTCS/ C.D. PERKINS	\$201,846	\$201,846	100%	\$0
081	Career Prep	Provide high school juniors and seniors in Kenosha, Racine, and Walworth counties with college access and career development activities and services. Also provides K-12 staff with partnerships that will result in meaningful programs of study, seamless secondary to postsecondary transition opportunities, increased awareness and use of career pathways resources, and increased articulation opportunities.	07/01/13 to 06/30/14	N/A	WTCS/ C.D. PERKINS	\$43,141	\$43,141	100%	\$0
083	Student Success	Build pathways to student success by providing direct student and support services designed to meet the needs of at-risk students. The services funded under this project will address challenges through counseling/case management services, tutoring, disability support services, success skills workshops, and career/employment services.	07/01/13 to 06/30/14	2,050	WTCS/ C.D. PERKINS	\$1,218,221	\$756,921	62.1%	\$461,300 37.9% Local
085	Nontraditional Occupations	Provide retention services to prepare individuals to successfully complete career and technical educational programs in NTO fields and provide career development services and enrollment assistance to potential students considering enrollment in NTO career and technical education programs.	07/01/13 to 06/30/14	55	WTCS/ C.D. PERKINS	\$50,461	\$50,461	100%	0%

KEY:  
WTCS/C.D. PERKINS: Carl D. Perkins Career and Technical Improvement Act of 2006 through Wisconsin Technical College System



## AUGUST 2013 GRANT AWARDS

Project Number	Title	Activities	Time Frame	Number Served	Funding Source	Project Costs	Federal/State Other Fund	Match Funds
173	R&B Grinding, LaValle Ind. & MPC	Provide training to 3 companies that share the mutual goal of increasing employee skills in 2 key areas: continuous process improvement and supervision/leadership.	7/1/13 to 06/30/14	87	WTCS/ WATG	\$ 31,475	\$31,475 100%	\$0
184	IBEW27 Training Committee	Provide training to 3 small businesses that are a part of the Electrical Union of Kenosha. Training will provide low level telecommunications classes for electricians and low voltage specialists.	7/1/13 to 06/30/14	12	WTCS/ WATG	\$ 17,818	\$17,818 100%	\$0
195	XTEN Industries LLC	Provide training to employees in basic math, communication skills, problem solving, value stream mapping, Six Sigma Green Belt, safety, teamwork and the continuation of LEAN principles.	7/1/13 to 06/30/14	117	WTCS/ WATG	\$ 51,690	\$51,690 100%	\$0
197	Palmer Hamilton	Provide training to employees in lean manufacturing principles, computer software, effective customer service skills and harassment prevention.	7/1/13 to 06/30/14	83	WTCS/ WATG	\$ 10,675	\$10,675 100%	\$0

KEY: WTCS/WATG: Workforce Advancement Training Grants through Wisconsin Technical College System.





## AUGUST 2013 GRANT AWARDS

Project Number	Title	Activities	Time Frame	Number Served	Funding Source	Project Costs	Federal/State		Match Funds
							Other Fund	Fund	
145	Protect-All, Inc.	Provide on-site workplace instruction in two key areas: first, offer English Language Learning to the Spanish speaking Hispanic population employed in the production area; and second, focus on eliminating waste and increasing efficiency.	7/1/13 to 06/30/14	14	WTCS/ WATG	\$ 28,321	\$28,321	100%	\$0
146	Knapp Manufacturing	Provide training to employees focusing on increasing production efficiency at this time of customer demand for new products and high quality, on time delivery.	7/1/13 to 06/30/14	13	WTCS/ WATG	\$ 16,960	\$16,960	100%	\$0

KEY: Workforce Advancement Training Grants through Wisconsin Technical College System.  
WTCS/WATG:

# GATEWAY TECHNICAL COLLEGE DISTRICT BOARD

Roll Call	_____
Action	<u>  X  </u>
Information	_____
Discussion	_____

## CONTRACTS FOR INSTRUCTIONAL DELIVERY

- Summary of Items:
- 1. 38.14 Contract reports for July 2013 over \$500**  
lists all contracts for service of \$500 or greater completed or in progress for the time period of July 2013.
  - 2. 38.14 Contract reports for July 2013 under \$500 -**  
lists all contracts for service less than \$500 completed or in progress for the time period of July 2013.

Ends Statements and/or Executive Limitations:  
Policy 4.4 College Strategic Directions/Ends Statements #1 and #3

Staff Liaison:                      Debbie Davidson

**38.14 CONTRACT REPORT  
FOR THE PERIOD OF JULY 2013**

Gateway Technical College  
Contracts over \$500.00

Contract Number	Company & City	Type of Recipient	Services	Type of Service	Dates	Estimated Cost of Service	Course Number	Number Served
2014-0066	North American Salt Kenosha	41	Intro to PLCs	CT	7/3/13- 7/31/13	1,426.00		9

**Type of Service Recipient**

- 11=Public Educational Inst./K-12
- 13=Public Educ. Inst./K-12-Slotter
- 15=Multiple Educational Inst.
- 18=Public Educ. Inst./Postsecondary
- 19=Private Educational Institutions
- 21=WI Local Governmental Units
- 22=Indian Tribal Governments
- 23=Economic Development Corp.
- 24=County Board of Supervisors
- 25=Multiple Local Governmental Units
- 31=State of Wisconsin
- 32=WI Dept. of Corrections

- 33=WI Division of Voc. Rehabilitation
- 35=Multiple State Governmental Units
- 41=Business & Industry
- 42=Community Based Organization
- 43=Workplace Education initiative
- 44= WMEP Related Contracts
- 45=Multiple Business &/or Industries
- 47= WAT Grant
- 51=Federal Government
- 55=Multiple Federal Government Units
- 61=Foreign Governments
- 62=States Other Than WI
- 63=Out of State Businesses

**Type of Service**

- C=Customized Instruction
- T=Technical Assistance
- F=Fiscal & Management Service

District Contact \_\_\_\_\_ Date \_\_\_\_\_

District Contact \_\_\_\_\_ Date \_\_\_\_\_  
I affirm that the foreign and out-of-state contracts in this report are in compliance with the requirements of s.38.14(3), Wisconsin Statutes.

President \_\_\_\_\_ Date \_\_\_\_\_

**38.14 CONTRACT REPORT  
FOR THE PERIOD OF JULY 2013**

Gateway Technical College  
Contracts Under \$500.00

Contract Number	Company & City	Type of Recipient	Services	Type of Service	Dates	Estimated Cost of Service	Course Number	Number Served
	None for this period							

Type of Service Recipient

- 11=Public Educational Inst./K-12
- 13=Public Educ. Inst./K-12-Slotter
- 15=Multiple Educational Inst.
- 18=Public Educ. Inst./Postsecondary
- 19=Private Educational Institutions
- 21=WI Local Governmental Units
- 22=Indian Tribal Governments
- 23=Economic Development Corp.
- 24=County Board of Supervisors
- 25=Multiple Local Governmental Units
- 31=State of Wisconsin
- 32=WI Dept. of Corrections

Type of Service

- C=Customized Instruction
- T=Technical Assistance
- F=Fiscal & Management Service

- 33=WI Division of Voc. Rehabilitation
- 35=Multiple State Governmental Units
- 41=Business & Industry
- 42=Community Based Organization
- 43=Workplace Education initiative
- 44=WMEP Related Contracts
- 47 WAT Grant
- 45=Multiple Business &/or Industries
- 51=Federal Government
- 55=Multiple Federal Government Units
- 61=Foreign Governments
- 62=States Other Than WI
- 63=Out of State Businesses

District Contact \_\_\_\_\_ Date \_\_\_\_\_  
 District Contact \_\_\_\_\_ Date \_\_\_\_\_  
 I affirm that the foreign and out-of-state contracts in this report are in compliance with the requirements of s.38.14(3), Wisconsin Statutes.  
 President \_\_\_\_\_ Date \_\_\_\_\_

# Workforce & Economic Development Division Contracts for Service as of July 1, 2013 - for FY14

Contract Number	ATC	Company	City	Company Contact Person	Gateway Contact Person	Status	Dates	Course Name	Course Number	Case End Date	Instructor	Cost
2014-0001-2014-0004		FY13										
2014-0005		Badger High School	W	Robert Kopydlowski	Jo Hart	I	9/3-12/12/13	Nursing Assistant	543-300-2zbc	7/22	Jo Hart	8,503.16
2014-0006		Wilmot High School	K	Chris Trottier	Jo Hart	I	9/3-12/12/13	Nursing Assistant	543-300-2zbd	7/22	Jo Hart	8,503.16
2014-0007		KUSD/Indian Trails	K	Mark Hinterberg	Julie Capelli	I	11/4-1/16/14	Nursing Assistant	543-300-2Z1D	1/16	Julie Capelli	6,802.56
2014-0008		Burlington High School		Eric Burling	Jo Hart	I	9/3-11/27/13	Nursing Assistant	543-300-2bba	11/27	Jo Hart	4,251.60
2014-0009		Waterford High School		Erik Blake	Jo Hart	I	9/3-11/27/13	Nursing Assistant	543-300-2bbb	11/27	Jo Hart	4,251.60
2014-0010		Elkhorn High School		Tina Bosworth	Jo Hart	I	9/3-11/27/13	Nursing Assistant	543-300-2eba	11/27	Jo Hart	4,251.60
2014-0011		Delavan/Darien High School		Mark Schmitt	Jo Hart	I	9/3-11/27/13	Nursing Assistant	543-300-2ebb	11/27	Jo Hart	8,503.16
2014-0012		East Troy High School		Kimberly Penza	Jo Hart	I	9/3-12/12/13	Nursing Assistant	543-300-2eb1	12/12	Jo Hart	8,503.16
2014-0013		Westosha High School		Gail Netzer-Jensen	Jo Hart	I	9/3-12/12/13	Nursing Assistant	543-300-2eb2	12/12	Jo Hart	8,503.16
2014-0014		Burlington High School		Eric Burling	Jo Hart	I	9/3-12/12/13	Nursing Assistant	543-300-2bb1	12/12	Jo Hart	4,251.60
2014-0015		Waterford High School		Eric Blake	Jo Hart	I	9/3-12/12/13	Nursing Assistant	543-300-2bb2	12/12	Jo Hart	4,251.60
2014-0016		Whitewater High School		Doug Parker	Jo Hart	I	9/9-12/11/13	Nursing Assistant	543-300-2zbe	12/11	Jo Hart	4,251.60
2014-0017		KUSD/Tremper High School	K	Mark Hinterberg	Julie Capelli	I	9/3-10/30/13	Nursing Assistant	543-300-2z1a	10/30	J Capelli	6,802.56
2014-0018		KUSD/Indian Trails	K	Mark Hinterberg	Julie Capelli	I	9/3-10/31/13	Nursing Assistant	543-300-2Z1b	10/31	Julie Capelli	6,802.56
2014-0019		KUSD/Tremper High School	K	Mark Hinterberg	Julie Capelli	I	11/4-1/18/13	Nursing Assistant	543-300-2z1c	10/30	J Capelli	6,802.56
2014-0020-2014-0022		FY13										
2014-0023		Johnson Wax	R	Patrice Biskup	Kim Sanderson	I	8/7-8/14/13	MS Project	103-404b-1sba	8/14	K Sanderson	1,426.00
2014-0024		# cancelled										
2014-0025		Forest County Potawatomi Milwaukee	O	John Wallner	Randy Reusser	I	8/19/13-8/24/13	BICSI TE350 Tech	150-417-1cbp	8/24	R. Reusser	10,372.00
2014-0026		Forest County Potawatomi Milwaukee	O	John Wallner	Randy Reusser	I	9/9/13-9/14/13	BICSI TE350 Tech	150-417-1cbp	8/24	R. Reusser	10,372.00
2014-0027		Johnson Wax	R	Patrice Biskup	Dan Neuman	I	9/3-12/31/13	TA-Dan Neuman	900-003-2m12	12/31	D Neuman	35,280.00
2014-0028		Insinkerator	R	Mike Foy	Richard Hanson	I	9/3-12/31/13	Technical Assistance	900-003-2m11	12/31	R Hanson D Neuman K Sanderson	65,047.50



Contract Number	ATC	Company	Company	Company Person	Company Contact Person	Gateway Contact Person	Status	Dates	Course Name	Course Number	Crse End Date	Instructor	Cost
2014-0056		Gateway Foundation, Inc	K	Jennifer Charpentier	Robin Hoke	I	8/26/13-10/18/13	Pneumatics/Hyd Industrial Controls Math Blueprint Reading DC/AC Mechanical MSSC Skills Speech Torque Applications Intro to Welding Mech Power Trans Maintenance Mach	612-102-1iba 620-103-1iba 804-370-1iba 606-121-1iba 605-113-1iba 625-125-1iba 628-109-1iba 801-302-1iba 601-413-1iba 442-102-1iba 462-103-1iba 462-101-1iba	10/18	D Neuman M Pagliaroni JD Jones L Wilkins S Yousuf R Reusser D Dalpaos	0.00	
2014-0057		Scot Forge		Lindsey Camalle	Robin Hoke	I	8/26/13-10/18/13	Pneumatics/Hyd Industrial Controls Math Blueprint Reading DC/AC Mechanical MSSC Skills Speech Torque Applications Intro to Welding Mech Power Trans Maintenance Mach	612-102-1ibb 620-103-1ibb 804-370-1ibb 606-121-1ibb 605-113-1ibb 625-125-1ibb 628-109-1ibb 801-302-1ibb 601-413-1ibb 442-102-1ibb 462-103-1ibb 462-101-1ibb	10/18	D Neuman M Pagliaroni JD Jones L Wilkins S Yousuf R Reusser D Dalpaos	0.00	
2014-0058		FY13											
2014-0061		FY13											
2014-0064		WCEDA Elkhorn	W	Mike Van Den Bosch	Lauri Howard	I	10/14/13-11/18/13	APICS: Basics of Supply Chain Mgmt	182-478c	11/18	H. Schooler	2,646.00	
2014-0065		IRIS USA Pleasant Prairie	K	Sharon Emerson	Kim Sanderson	I	8/7/13-8/28/13	Excel 2003	103-417c-1zbr	8/28	K. Sanderson	1,426.00	
2014-00066		North American Salt Co. Kenosha	K	Kendra Martinelli	Kim Sanderson	I	7/3/13-7/31/13	Intro. To PLCs	103-418h-1zbn	7/31	K. Sanderson	1,426.00	
2014-0070		Carthage College Kenosha	K	Carol Sabbar	Randy Reusser	I	8/12/13-8/15/13	Belden 726 Copper	150-406-1ibc	8/15	R. Reusser	1,260.00	
												<b>TOTAL</b>	<b>299,771.14</b>

## GATEWAY TECHNICAL COLLEGE DISTRICT BOARD

Roll Call \_\_\_\_\_  
Action   x  \_\_\_\_\_  
Information \_\_\_\_\_  
Discussion \_\_\_\_\_

### ADVISORY COMMITTEE ACTIVITY REPORT

Summary of Item: Approval of:

- New Members as of August 1, 2013
- 2013-14 Meeting Schedule as of August 1, 2013

Staff Liaison: John Thibodeau



# GATEWAY TECHNICAL COLLEGE ADVISORY COMMITTEES -- NEW MEMBERS as of August 1, 2013

PROGRAM Name	Job Title	Employer	County Represented
<b>Architectural - Structural Engineering/ Technical Civil Engineering - Fresh Water Resources /Civil Engineering Technology - Highway Technology/ Land Survey Technician</b>			
McCormack Ronald	Partner	McCormack + Etten Architects	Walworth
<b>Emergency Medical Technician - Basic / Intermediate / Intermediate Tech &amp; Paramedic Technician</b>			
Pitt Daniel Jon	2nd Assistant Chief	Town of Linn Fire & EMS	Kenosha
<b>Fire Protection Technician</b>			
Stedman Robert	Fire Chief	South Shore Fire Department	Racine
<b>Hotel/Hospitality Management</b>			
McGuire Shaun	Assistant Food & Beverage	Lake Lawn Resort	Walworth
Warrenburg Brenda	Operation Manager	Comfort Suites	Walworth

# ADVISORY COMMITTEE 2013-2014 MEETING SCHEDULE as of August 1, 2013

ADVISORY COMMITTEE	DEAN	FALL 2013	SPRING 2014
Accounting	M. Babu	Wednesday, October 9, 2013 5:30 pm, iMET Center	
Administrative Professional Office Assistant	R. Koukari	Wednesday, October 9, 2013 5:30 pm, iMET Center	
Adult Basic Education	C. Jennings		
Adult High School	C. Jennings		
Aeronautics-Pilot Training	D. Sherwood		
Air Conditioning, Heating, And Refrigeration Technology	B. Frazier	Thursday, September 19, 2013	
Architectural-Structural Engineering Technician Civil Engineering Technology - Fresh Water Resources Civil Engineering Technology – Highway Technology Land Survey Technician	B. Frazier	Summer: Monday, June 17, 2013 Fall: Monday, October 07, 2013 5:00 pm, iMET Center	
Automated Manufacturing Systems Technician	B. Frazier		
Automotive Maintenance Technician Automotive Technology	B. Frazier	Tuesday, September 24, 2013 Horizon Center	
Barber/Cosmetologist	T. Simmons		
Building Trades - Carpentry	B. Frazier		
Business Management	M. Babu	Wednesday, October 9, 2013 5:30 pm, iMET Center	
CNC Production Technician	B. Frazier	Monday, September 16, 2013 5:30 pm, Racine Campus	
Community Pharmacy Technician	M. O'Donnell		

ADVISORY COMMITTEE	DEAN	FALL 2013	SPRING 2014
Criminal Justice - Law Enforcement	T. Simmons		
Criminal Justice – Law Enforcement Academy	T. Simmons		
Culinary Arts	T. Simmons		
Dental Assistant	J. Pinson		
Diesel Equipment Mechanic	B. Frazier	Wednesday, October 2, 2013 Horizon Center	
Diesel Equipment Technology	B. Frazier	Wednesday, October 2, 2013 Horizon Center	
Early Childhood Education	T. Simmons		
Electrical Engineering Technology	B. Frazier	Wednesday, October 9, 2013 5:30 pm , iMET Center	Wednesday, April 2, 2014 5:30 pm, iMET Center
Electromechanical Technology	B. Frazier	Wednesday, October 9, 2013 5:30 pm, iMET Center	Wednesday, April 2, 2014 5:30 pm, iMET Center
Electronics	B. Frazier	Wednesday, October 9, 2013 5:30 pm, iMET Center	Wednesday, April 2, 2014 5:30 pm, iMET Center
Emergency Medical Technician - Basic Emergency Medical Technician - Intermediate Emergency Medical Technician - Intermediate Tech Paramedic Technician	T. Simmons	Thursday, October 3, 2013 11:00 am, HERO Center	
Facilities Maintenance	B. Frazier	Thursday, September 19, 2013	
Fire Protection Technician	T. Simmons	Thursday, October 3, 2013 11:00 am, HERO Center	
Graphic Communications	M. Babu	Thursday, September 26, 2013 5:30 pm, iMET Center	
Health Information Technology	J. Pinson		
Health Unit Coordinator	J. Pinson		

ADVISORY COMMITTEE	DEAN	FALL 2013	SPRING 2014
Horticulture	B. Frazier	Monday, October 14, 2013	
Hotel/Hospitality Management	T. Simmons		
Human Services Associate	T. Simmons		
Industrial Mechanical Technician	B. Frazier	Tuesday, October 16, 2013	Wednesday, March 05, 2013
Instructional Assistant	T. Simmons		
Interior Design	B. Frazier	Thursday, October 03, 2013	
IT - Computer Support Specialist IT - Network Specialist IT - Web Developer/Administrator	R. Koukari	Tuesday, October 17, 2013 5:30 pm, iMET Center	
IT - Software Developer	R. Koukari	Tuesday, October 17, 2013 5:30 pm, iMET Center	
Marketing	M. Babu	Wednesday, October 9, 2013 5:30 pm, iMET Center	
Mechanical Design Technology	B. Frazier	Monday, October 21, 2013	Monday, February 25, 2013
Medical Assistant	J. Pinson		
Medical Transcription	J. Pinson		
Nursing Assistant	D. Skewes		
Nursing Associate Degree Practical Nursing	D. Skewes	Thursday, October 10, 2013 Kenosha Campus	

ADVISORY COMMITTEE	DEAN	FALL 2013	SPRING 2014
Physical Therapist Assistant	J. Pinson	Saturday, September 21, 2013	
Professional Communications	M. Babu	Thursday, September 26, 2013 5:30 pm, iMET Center	
Radiography	J. Pinson		
Small Business Entrepreneurship	R. Koukari	Wednesday, October 9, 2013 5:30 pm, iMET Center	
Supervisory Management	M. Babu	Wednesday, October 9, 2013 5:30 pm, iMET Center	
Surgical Technology	J. Pinson		
Welding	B. Frazier	Thursday, October 17, 2013	Thursday, March 20, 2014
Welding/Maintenance & Fabrication	B. Frazier	Thursday, October 17, 2013	Thursday, March 20, 2014

X. POLICY GOVERNANCE MONITORING REPORTS

A. Ends Statement Monitoring

1. End Statement #4 – Gateway models integrity, social responsibility, and continuous improvement in its internal and external processes and relationships. (Z. Haywood and W. Whyte)

**GATEWAY TECHNICAL COLLEGE DISTRICT BOARD**

Roll Call	_____
Action	<u>  X  </u>
Information	_____
Discussion	_____

**POLICY GOVERNANCE MONITORING REPORTS**  
**Ends Statement Monitoring**  
**Ends Statement #4**

**Summary:** Gateway models integrity, social responsibility, and continuous improvement in its internal and external processes and relationships

**Staff Liaison:** Z. Haywood and W. Whyte

## XI. BOARD MEMBER COMMUNITY REPORTS



# GATEWAY TECHNICAL COLLEGE DISTRICT BOARD

Roll Call \_\_\_\_\_  
Action \_\_\_\_\_  
Information   X    
Discussion \_\_\_\_\_

## BOARD MEMBER COMMUNITY REPORTS

Summary: Board members will share recent contacts.

Governance Policy: Policy 1.5-Board Member Role

- XII. Next Meeting Date and Adjourn
  - A. Regular Meeting – Thursday, September 19, 2013, 8:00 am, Elkhorn Campus
  - B. Adjourn